

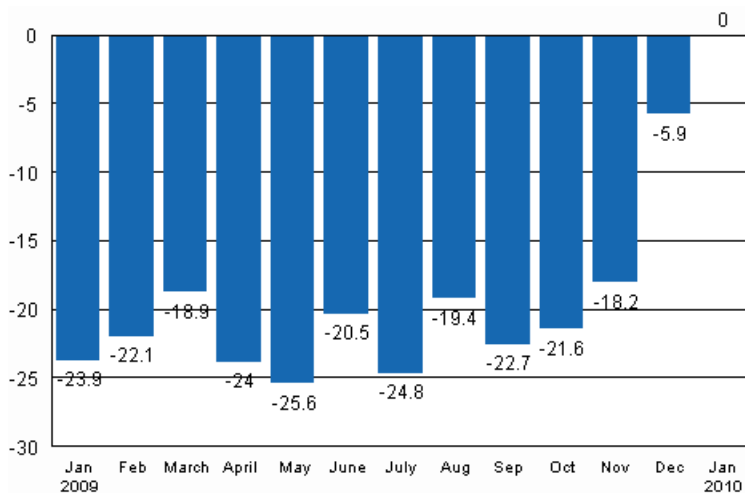
Volume index of industrial output

2010, January

Industrial output was in January on level with the previous year

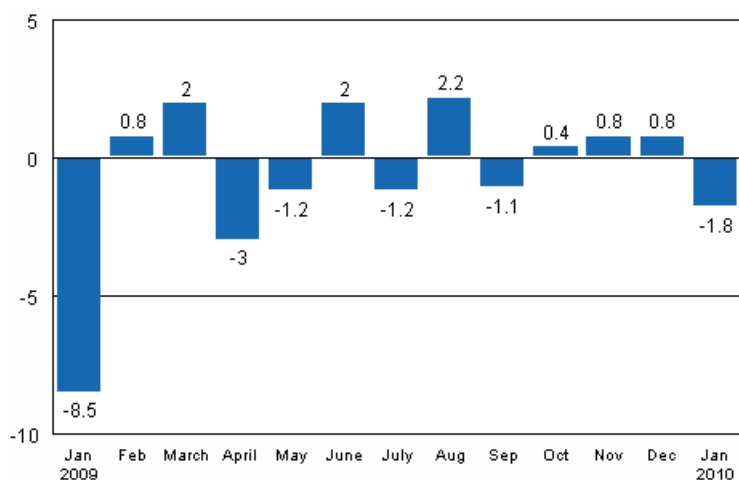
According to Statistics Finland, output of total industries adjusted for working days was in January 2010 on the same level as twelve months earlier. January data indicate that industrial output did not yet take off into long-awaited growth.

Working day adjusted change in industrial output (BCDE) from corresponding month previous year, %, TOL 2008



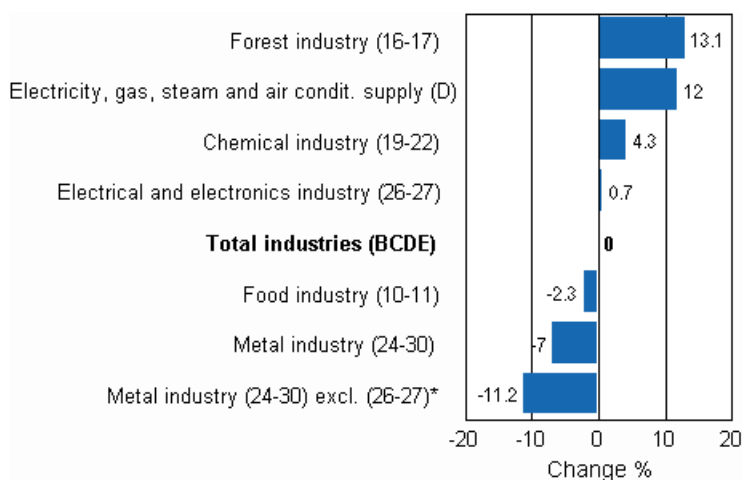
Seasonally adjusted output fell in January by 1.8 per cent compared with the previous month. The slight growth having started at the end of last year halted in January.

Seasonally adjusted change in industrial output (BCDE) from previous month, %, TOL 2008



The strong growth of output in the forest industry also continued in January, being 13.1 per cent higher than in last year's January. Output in the chemical industry also grew. In January output adjusted for working days exceeded last year's level by 4.3 per cent. Production of electricity and heat grew by 12 per cent from one year ago. Output in the electrical and electronics industry was almost unchanged from the year before. Among the main industries, the biggest fall of -11.2 per cent was recorded in the metal industry, excl. manufacture of electrical and electronic products. Output in the food industry adjusted for working days contracted by 2.3 per cent.

Working day adjusted change in industrial output by industry 1/2009-1/2010, %, TOL 2008



Capacity utilisation rate in manufacturing was 72.8 per cent in January. One year before it was 68 per cent. Capacity utilisation rate in the forest industry rose in January to 78.1 per cent, having been around ten percentage points lower one year previously. However, capacity utilisation rate in the forest industry is still around seven percentage points down on the average for the 2000s. Capacity utilisation rate in the chemical industry also rose from one year before.

Estimation

In many months of the year the volume index of industrial output uses estimation in industry 26-27 Electrical and electronics industry. In this industry Statistics Finland estimates data 8 times a year. Not all of the data on this industry are at Statistics Finland's disposal at the time of publication. As the weight of the industry (26-27) is nearly 20 per cent in total industries, using estimation may influence the point figures and change percentages calculated for the volume index of industrial output even if previous months' data on other industries do not become revised.

Revised data for January will be published on 9 April 2010 at 9 am in connection with the industrial output data for February. Because of the method used, seasonally adjusted figures for previous months may change even if the original figures do not become revised. The seasonally adjusted figures will also be adjusted for working days.

Contents

Industrial output was in January on level with the previous year	5
Figures	
Working day adjusted change percentage of industrial output January 2009 / January 2010, TOL 2008.....	7
Seasonally adjusted change percentage of industrial output December 2009 / January 2010, TOL 2008.....	7
Trend of industrial output Finland, Germany, Sweden, France and United Kingdom (BCD) 2000 - 2009, 2005=100, TOL 2008.....	8

Industrial output was in January on level with the previous year

According to Statistics Finland, output of total industries adjusted for working days was in January 2010 on the same level as twelve months earlier. January data indicate that industrial output did not yet take off into long-awaited growth.

Mining and quarrying decreased in January by nearly 28 per cent from one year back. Industrial output adjusted for working days was also nearly four per cent down on January 2009. The cold January raised production of electricity. Output in electricity, gas, steam and air conditioning supply grew by 12 per cent in January. This kept the output of the whole industry on level with the previous year's January. The whole industry, excluding production of electricity, fell in January by nearly five per cent from one year ago.

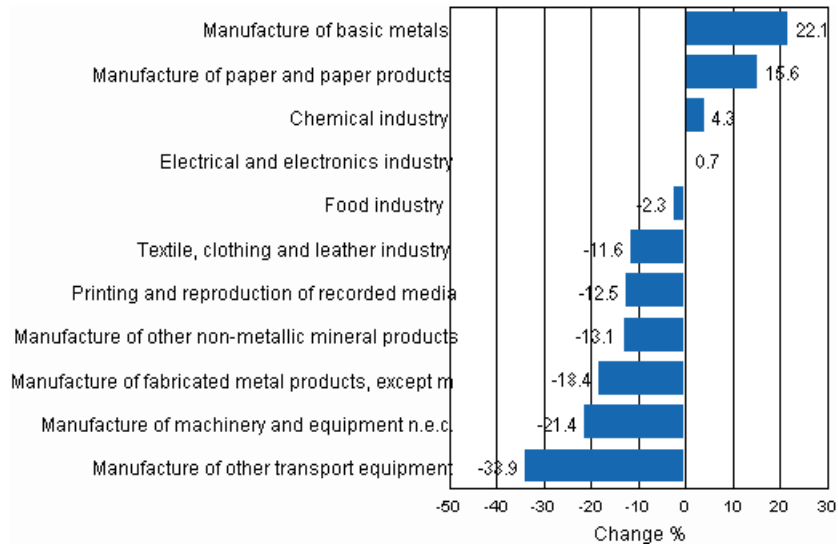
Volume index of industrial output, value added, original, working day adjusted, seasonally adjusted change percentage

Industry (Tol 2008)	Value added share	Original change percentage, 2010 JAN / 2009 JAN	Working day adj. change percentage, 2010 JAN / 2009 JAN	Seasonal adj. change percentage, 2010 JAN / 2009 DEC
Total industries	100,0	-1,8	-0,0	-1,8
B Mining and quarrying	1,3	-9,1	-27,7	0,9
C Manufacturing	86,1	-4,1	-3,9	-3,3
10 Manufacture of food products	5,0	-3,9	-2,1	-0,1
11 Manufacture of beverages	0,9	-6,1	-6,1	-5,9
13 Manufacture of textiles	0,6	-18,8	-18,8	-10,3
14 Manufacture of wearing apparel	0,4	-27,8	-25,5	-3,8
15 Manufacture of leather and related products	0,2	7,4	12,8	13,4
16 Manufacture of wood and of products of wood and cork, except furniture; manufacture of articles of straw and plaiting materials	4,6	12,5	10,6	0,5
17 Manufacture of paper and paper products	8,3	15,9	15,6	2,4
18 Printing and reproduction of recorded media	1,8	-11,5	-12,5	0,7
23 Manufacture of other non-metallic mineral products	3,2	-14,8	-13,1	-4,2
24 Manufacture of basic metals	6,1	26,3	22,1	-2,8
25 Manufacture of fabricated metal products, except machinery and equipment	7,8	-19,8	-18,4	-4,6
28 Manufacture of machinery and equipment n.e.c.	9,7	-23,1	-21,4	-1,2
29 Manufacture of motor vehicles, trailers and semi-trailers	1,2	-45,6	-38,4	-1,2
30 Manufacture of other transport equipment	1,2	-22,1	-23,6	0,4
31 Manufacture of furniture	1,2	-36,1	-32,7	-6,5
32 Other manufacturing	1,1	-22,7	-19,9	-9,0
33 Repair and installation of machinery and equipment	3,0	-20,0	-19,4	-0,6
D Electricity, gas, steam and air conditioning supply	11,6	11,9	12,0	8,4
E Water supply; sewerage, waste management and remediation activities	1,1	-3,0	-1,9	0,3
36 Water collection, treatment and supply	0,8	-2,4	-2,2	0,4
Main industrial groupings:				
Raw materials and productive goods	38,6	4,4	4,4	-4,0
Investment goods	34,2	-12,7	-10,6	-10,0
Durable goods	1,5	-30,8	-27,5	-2,5
Other consumer goods	10,5	-8,9	-4,6	-0,6
Special indices:				
10-11 Food industry	5,9	-4,3	-2,3	0,5
13-15 Textile, clothing and leather industry	1,3	-17,7	-11,6	-2,8
16-17 Forest industry	12,8	14,8	13,1	0,5
19-22 Chemical industry	10,6	4,3	4,3	-14,2
24-30 Metal industry	45,1	-7,7	-7,0	-9,0
26-27 Electrical and electronics industry	19,2	2,2	0,7	-15,7
25,28-30,33 Machinery and metal product industry	22,8	-23,2	-22,7	1,0
29-30 Manufacture of transport equipment	2,4	-36,4	-33,9	-3,3

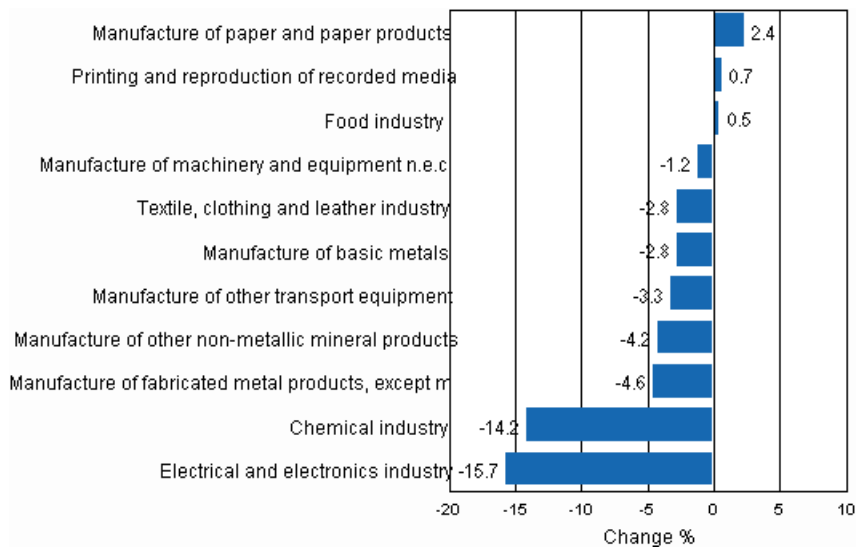
1) 2005=100

Figures

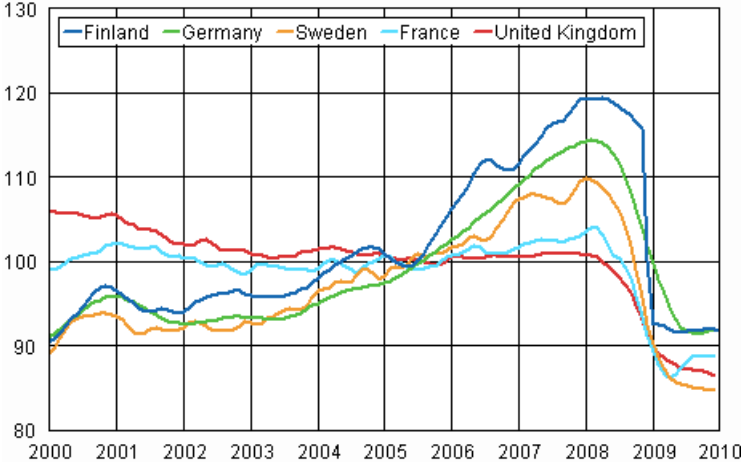
Working day adjusted change percentage of industrial output January 2009 / January 2010, TOL 2008



Seasonally adjusted change percentage of industrial output December 2009 / January 2010, TOL 2008



Trend of industrial output Finland, Germany, Sweden, France and United Kingdom (BCD) 2000 - 2009, 2005=100, TOL 2008



Suomen virallinen tilasto
Finlands officiella statistik
Official Statistics of Finland

Industry 2010

Inquiries

Aki Savolainen (09) 1734 2703

Kari Rautio (09) 1734 2479

Director in charge:

Hannele Orjala

volyyimi.indeksi@stat.fi

www.stat.fi