

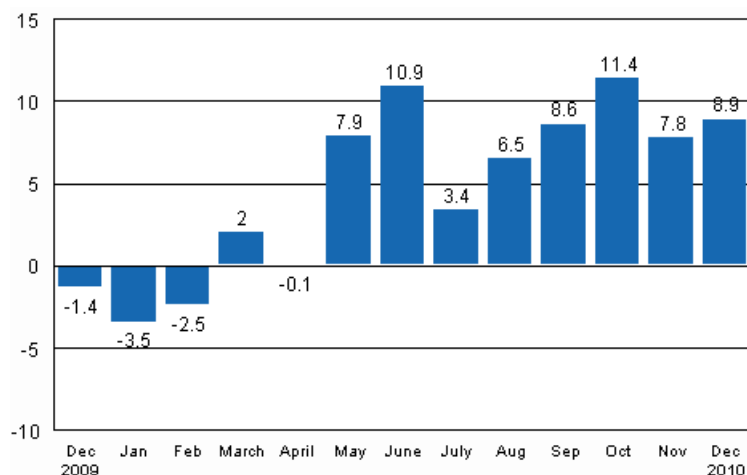
# Volume index of industrial output

2010, December

## Industrial output grew by 8.9 per cent in December 2010

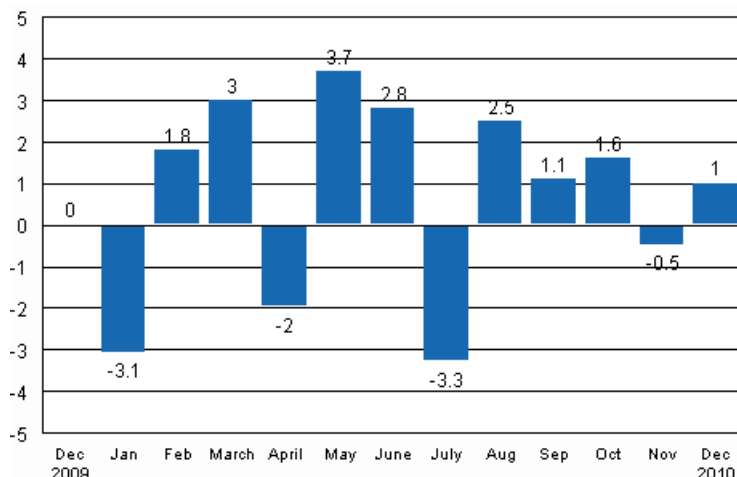
According to Statistics Finland, output of total industries adjusted for working days was 8.9 per cent higher in December 2010 than twelve months earlier. In November output was 7.8 per cent higher than one year before. According to preliminary data, industrial output grew by six per cent in 2010. The level of output for 2005 was attained last year. In the year of crisis, 2009, the level of output had fallen to the level of 2003.

Working day adjusted change in industrial output (BCDE) from corresponding month previous year, %, TOL 2008



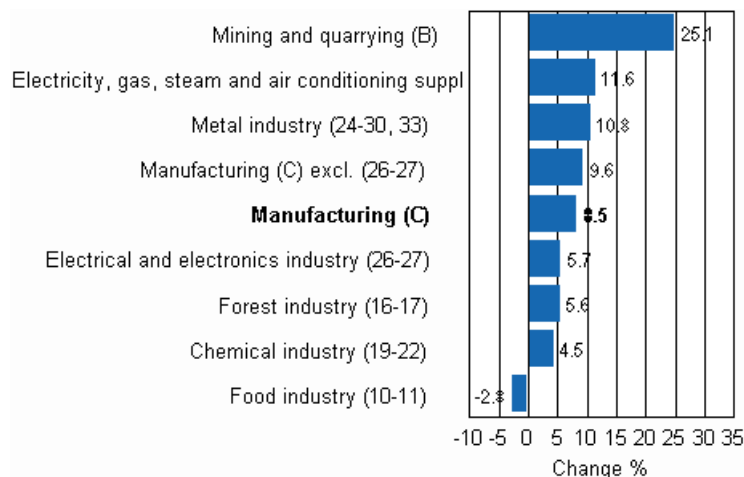
In December, seasonally adjusted output increased by one per cent from the previous month. In November, output decreased by 0.5 per cent from the previous month. In October, seasonally adjusted output grew by 1.6 per cent from September.

**Seasonally adjusted change in industrial output (BCDE) from previous month, %, TOL 2008**



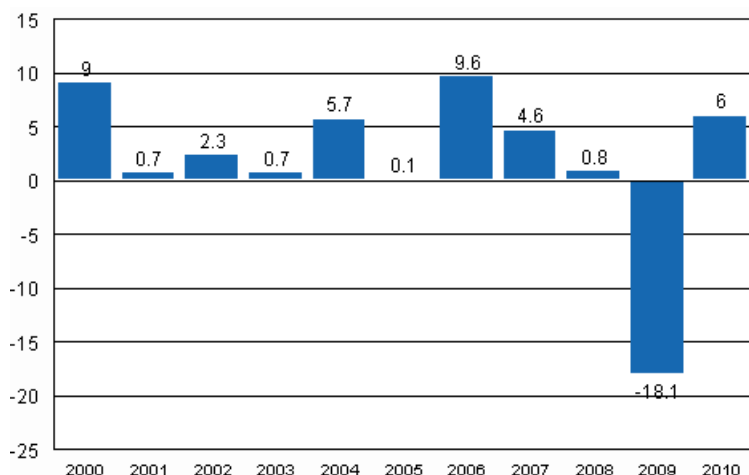
Output went up in most main industries in December. Among industries, the biggest growth was recorded in mining and quarrying, where output was as much as 25.1 per cent higher than in December 2009. The strong growth in mining has continued for several months. The brisk growth in electricity production has been going on for over one year. In December its output had grown by nearly 12 per cent. Output in the metal industry grew by 10.8 per cent from December 2009. Output in the electrical and electronics industry went up by 5.7 per cent. In the forest industry, output grew by 5.6 per cent from one year ago. In the chemical industry, output grew by 4.5 per cent. Among the main industries, output fell only in the food industry, down by 2.8 per cent.

**Working day adjusted change in industrial output by industry 12/2009-12/2010, %, TOL 2008**



Capacity utilisation rate in manufacturing was 77.9 per cent in December, or 13.9 percentage points higher than one year earlier. In the forest industry, capacity utilisation rate was 80.2 per cent, up by 12.8 percentage points from one year back. In the metal industry, capacity utilisation rate was 77.9 per cent in December, or 17.5 percentage points higher than one year earlier.

### Year-on-year change in industrial output (BCDE) 2000–2010, %, TOL 2008



### Estimation

Statistics Finland has increased the use of estimation. The main reason why the data become revised is the estimation used for activities 26-27. Some listed companies do not provide their data within the production timetable of the statistics so these data have to be estimated. This has to be done eight times per year. For instance, the data for the October to November period were estimated. In connection with the data for December, the data for the October to November period were also obtained and they became revised upwards. The Tax Administration's periodic tax data are used to compile statistics on the output of enterprises with fewer than 50 employees. Enterprises with fewer than 50 employees account for around 13 per cent of industrial output and these data cover nearly 70 per cent of the production of enterprises with fewer than 50 employees. These data are not at Statistics Finland's disposal by the release date of the volume index of industrial output. For this reason the data on these enterprises are estimated for the month the release concerns, i.e. in this case December 2010. The Tax Administration's data will be available when releasing data for the month for the second time, i.e. in the data for January.

Revised data for December will be published at 9 am on 10 March 2011 in connection with the industrial output data for January 2011. Because of the method used, seasonally adjusted figures for previous months may change even if the original figures do not become revised. The seasonally adjusted figures will also be adjusted for working days.

# Contents

Industrial output grew by 8.9 per cent in December .....	5
--	---

## Tables

Table 1. Volume index of industrial output, value added, original, working day adjusted, seasonally adjusted change percentage.....	6
---	---

## Figures

### Appendix figures

Appendix figure 1. Working day adjusted change percentage of industrial output December 2009 /December 2010, TOL 2008.....	7
Appendix figure 2. Seasonally adjusted change percentage of industrial output November 2010 /December 2010, TOL 2008.....	7
Appendix figure 3. Trend of industrial output Finland, Germany, Sweden, France and United Kingdom (BCD) 2000 - 2010, 2005=100, TOL 2008.....	8

## *Industrial output grew by 8.9 per cent in December*

According to Statistics Finland, output of total industries adjusted for working days was 8.9 per cent higher in December than twelve months earlier. In December, seasonally adjusted output increased by one per cent relative to November.

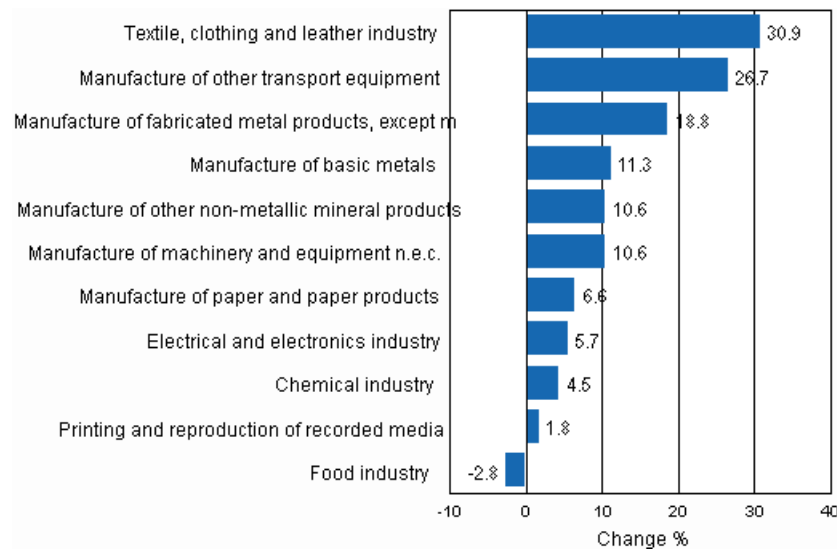
Adjusted for working days, industrial output grew by 8.5 per cent in December from one year back. The biggest output increase of nearly 31 per cent was recorded in the textile, clothing and leather industry. The manufacture of other transport equipment increased by 24.8 per cent. Output of sawn timber adjusted for working days was 4.9 per cent up year-on-year in December. The manufacture of paper products increased by 6.6 per cent. The manufacture of beverages was the only industry where output decreased in December. Its output went down by 21.5 per cent.

**Table 1. Volume index of industrial output, value added, original, working day adjusted, seasonally adjusted change percentage**

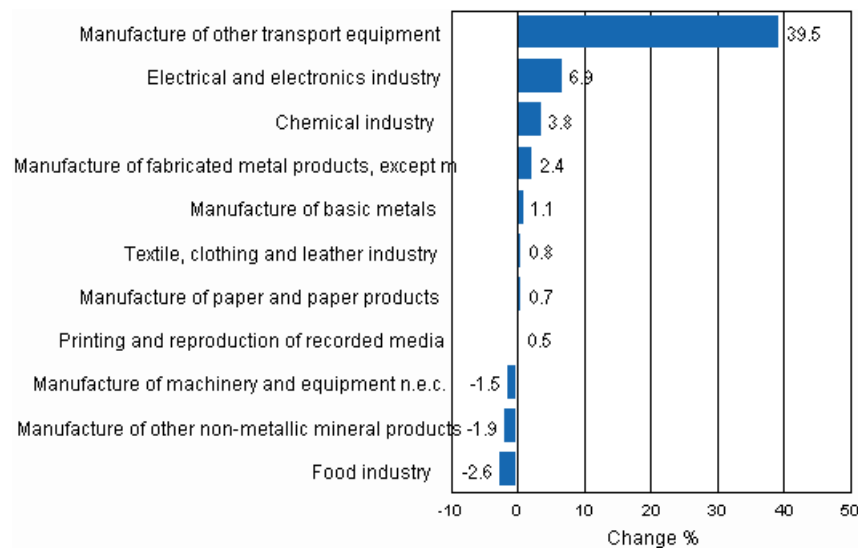
	Value added share	Original change percentage, 2010 DEC / 2009 DEC	Working day adj. change percentage, 2010 DEC / 2009 DEC	Seasonal adj. change percentage, 2010 DEC / 2010 NOV
Industry (Tol 2008)				
Total industries	100,0	10,3	8,9	1,0
B Mining and quarrying	1,6	29,3	25,1	34,8
C Manufacturing	83,6	9,9	8,5	0,9
10 Manufacture of food products	7,4	0,4	0,9	0,1
11 Manufacture of beverages	1,3	-21,5	-21,5	-8,9
13 Manufacture of textiles	0,7	18,2	18,2	-0,3
14 Manufacture of wearing apparel	0,4	37,8	37,8	8,0
15 Manufacture of leather and related products	0,2	60,1	60,1	-4,8
16 Manufacture of wood and of products of wood and cork, except furniture; manufacture of articles of straw and plaiting materials	3,3	2,2	4,9	-1,0
17 Manufacture of paper and paper products	7,5	7,0	6,6	0,7
18 Printing and reproduction of recorded media	2,2	4,5	1,8	0,5
23 Manufacture of other non-metallic mineral products	3,0	10,7	10,6	-1,9
24 Manufacture of basic metals	2,1	14,9	11,3	1,1
25 Manufacture of fabricated metal products, except machinery and equipment	8,6	18,8	18,8	2,4
28 Manufacture of machinery and equipment n.e.c.	11,3	12,4	10,6	-1,5
29 Manufacture of motor vehicles, trailers and semi-trailers	1,1	29,7	29,4	5,2
30 Manufacture of other transport equipment	1,4	24,8	24,8	5,6
31 Manufacture of furniture	1,3	15,5	15,3	1,6
32 Other manufacturing	0,9	4,0	4,0	0,3
33 Repair and installation of machinery and equipment	3,9	15,8	15,8	2,5
D Electricity, gas, steam and air conditioning supply	12,4	11,6	11,6	9,3
E Water supply; sewerage, waste management and remediation activities	2,3	5,8	6,0	-0,6
36 Water collection, treatment and supply	0,7	6,2	6,2	0,0
Main industrial groupings:				
Raw materials and productive goods	34,6	9,6	9,8	1,9
Investment goods	31,1	14,0	14,0	6,5
Durable goods	1,7	10,9	15,2	1,5
Other consumer goods	14,9	2,6	2,5	0,2
Special indices:				
10-11 Food industry	8,7	-3,3	-2,8	-2,6
13-15 Textile, clothing and leather industry	1,3	30,9	30,9	0,8
16-17 Forest industry	10,7	5,6	5,6	-0,1
19-22 Chemical industry	13,1	4,5	4,5	3,8
24-30 Metal industry	38,5	14,1	9,3	6,8
26-27 Electrical and electronics industry	13,9	11,3	5,7	6,9
25,28-30,33 Machinery and metal product industry	26,2	16,0	13,2	0,3
29-30 Manufacture of transport equipment	2,5	26,7	26,7	39,5

## Appendix figures

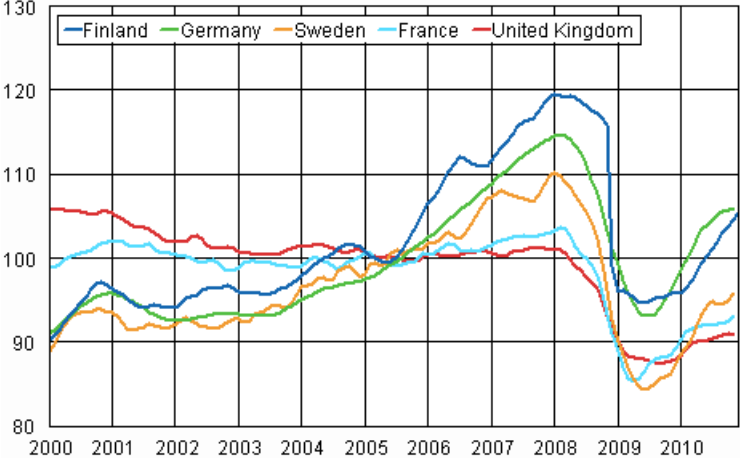
**Appendix figure 1. Working day adjusted change percentage of industrial output December 2009 /December 2010, TOL 2008**



**Appendix figure 2. Seasonally adjusted change percentage of industrial output November 2010 /December 2010, TOL 2008**



**Appendix figure 3. Trend of industrial output Finland, Germany, Sweden, France and United Kingdom (BCD) 2000 - 2010, 2005=100, TOL 2008**





---

Suomen virallinen tilasto  
Finlands officiella statistik  
Official Statistics of Finland

Industry 2011

### Inquiries

Kari Rautio (09) 1734 2479

Director in charge:

Hannele Orjala

[volyyimi.indeksi@stat.fi](mailto:volyyimi.indeksi@stat.fi)

[www.stat.fi](http://www.stat.fi)

Source: Volume Index of Industrial Output 2010, December. Statistics Finland