

Volume index of industrial output

2011, April

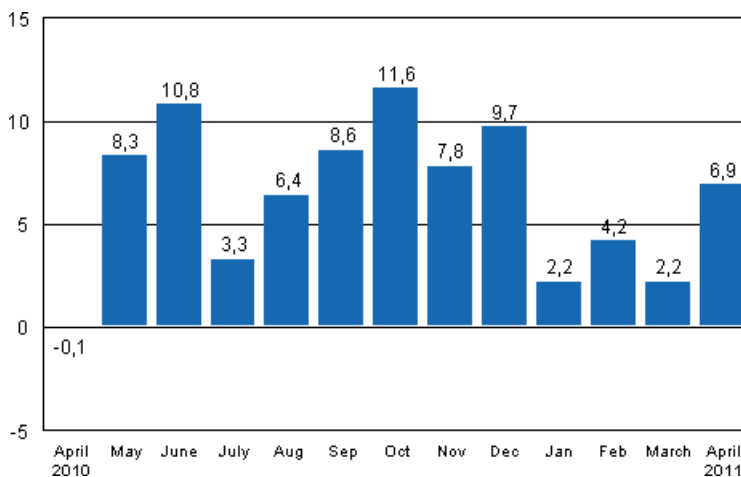
Industrial output grew by 6.9 per cent in April

Corrected 28 June 2011

Nearly all figures have been revised. [Further information](#) about the correction.

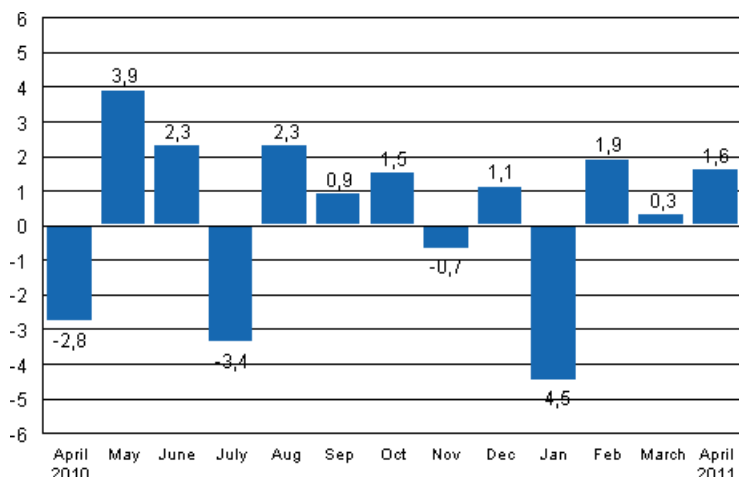
According to Statistics Finland, output of total industries adjusted for working days was 6.9 per cent higher in April 2011 than twelve months earlier. In March, output was 2.2 per cent higher than in March 2010.

Working day adjusted change in industrial output (BCDE) from corresponding month previous year, %, TOL 2008



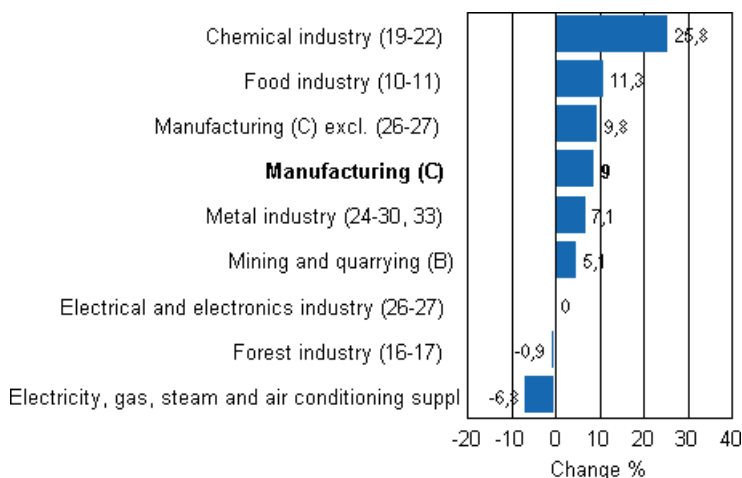
In April, seasonally adjusted output grew by 1.6 per cent from March. In March, output increased by 0.3 per cent from the previous month. In February, seasonally adjusted output went up by 1.9 per cent from January.

Seasonally adjusted change in industrial output (BCDE) from previous month, %, TOL 2008



In April, output was up year-on-year in most main industries. The biggest growth was recorded in the chemical industry where output was 25.8 per cent higher than in April 2010. In the food industry, output grew by 11.3 per cent. Output in the metal industry was 7.1 per cent higher than one year previously. The biggest fall in April was recorded in the production of electricity, which was 6.8 down on last year's April.

Working day adjusted change in industrial output by industry 4/2010-4/2011, %, TOL 2008



Capacity utilisation rate in manufacturing was 80.7 per cent in April, or 9.2 percentage points higher than one year earlier. In the forest industry, capacity utilisation rate was 89.7 per cent in April, or 7.9 percentage points higher than in April 2010. In the metal industry, capacity utilisation rate was 82.4 per cent in April, or 13.3 percentage points higher than one year earlier.

Contents

Industrial output grew by 6.9 per cent in April.....	4
--	---

Tables

Table 1. Volume index of industrial output, value added, original, working day adjusted, seasonally adjusted change percentage.....	5
---	---

Figures

Appendix figures

Appendix figure 1. Working day adjusted change percentage of industrial output April 2010 /April 2011, TOL 2008.....	6
--	---

Appendix figure 2. Seasonally adjusted change percentage of industrial output March 2011 /April 2011, TOL 2008.....	6
---	---

Appendix figure 3. Trend of industrial output Finland, Germany, Sweden, France and United Kingdom (BCD) 2000 - 2011, 2005=100, TOL 2008.....	7
--	---

Industrial output grew by 6.9 per cent in April

According to Statistics Finland, output of total industries (BCDE) adjusted for working days was 6.9 per cent higher in April than twelve months earlier. Seasonally adjusted output grew by 1.6 per cent in April relative to March.

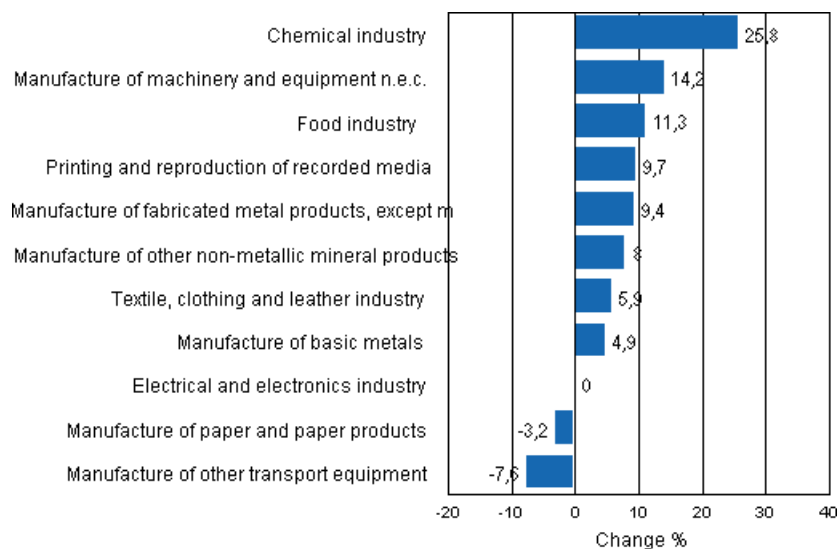
Adjusted for working days, industrial output (C) increased by 9.0 per cent in April from one year back. The manufacture of metal products increased by 9.4 per cent.

Table 1. Volume index of industrial output, value added, original, working day adjusted, seasonally adjusted change percentage

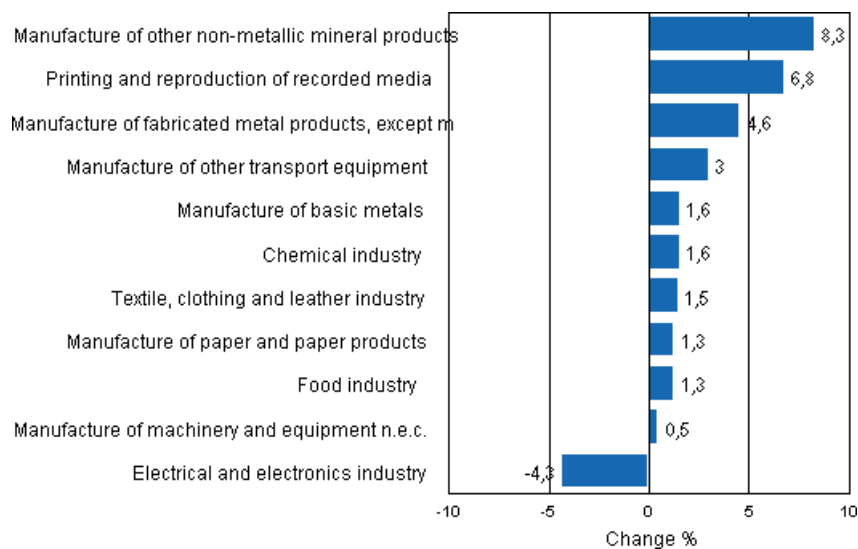
	Value added share	Original change percentage, 2011 APR / 2010 APR	Working day adj. change percentage, 2011 APR / 2010 APR	Seasonal adj. change percentage, 2011 APR / 2011 MAR
Industry (Tot 2008)				
Total industries	100,0	4,4	6,9	1,6
B Mining and quarrying	1,6	5,1	5,1	8,7
C Manufacturing	83,6	6,2	9,0	4,6
10 Manufacture of food products	7,4	8,5	10,4	0,2
11 Manufacture of beverages	1,3	13,1	16,1	6,0
13 Manufacture of textiles	0,7	-3,9	0,2	-0,6
14 Manufacture of wearing apparel	0,4	7,9	13,4	0,4
15 Manufacture of leather and related products	0,2	6,3	10,4	2,5
16 Manufacture of wood and of products of wood and cork, except furniture; manufacture of articles of straw and plaiting materials	3,3	-2,0	2,9	0,9
17 Manufacture of paper and paper products	7,5	-2,9	-3,2	1,3
18 Printing and reproduction of recorded media	2,2	3,7	9,7	6,8
23 Manufacture of other non-metallic mineral products	3,0	3,5	8,0	8,3
24 Manufacture of basic metals	2,1	3,7	4,9	1,6
25 Manufacture of fabricated metal products, except machinery and equipment	8,6	5,1	9,4	4,6
28 Manufacture of machinery and equipment n.e.c.	11,3	9,5	14,2	0,5
29 Manufacture of motor vehicles, trailers and semi-trailers	1,1	-13,1	-6,5	0,3
30 Manufacture of other transport equipment	1,4	-8,9	-2,8	5,8
31 Manufacture of furniture	1,3	8,2	12,7	6,4
32 Other manufacturing	0,9	15,6	18,1	5,3
33 Repair and installation of machinery and equipment	3,9	8,0	12,1	0,6
D Electricity, gas, steam and air conditioning supply	12,4	-6,8	-6,8	-6,2
E Water supply; sewerage, waste management and remediation activities	2,3	4,7	7,0	2,9
36 Water collection, treatment and supply	0,7	5,4	6,4	1,7
Main industrial groupings:				
Raw materials and productive goods	34,6	2,7	4,6	-0,1
Investment goods	31,1	3,0	5,7	0,3
Durable goods	1,7	2,9	7,9	1,6
Other consumer goods	14,9	9,0	12,4	1,5
Special indices:				
10-11 Food industry	8,7	9,2	11,3	1,3
13-15 Textile, clothing and leather industry	1,3	1,9	5,9	1,5
16-17 Forest industry	10,7	-2,6	-0,9	1,8
19-22 Chemical industry	13,1	22,9	25,8	1,6
24-30 Metal industry	38,5	3,5	6,5	0,8
26-27 Electrical and electronics industry	13,9	0,3	-0,0	-4,3
25,28-30,33 Machinery and metal product industry	26,2	5,7	9,9	3,2
29-30 Manufacture of transport equipment	2,5	-11,0	-7,6	3,0

Appendix figures

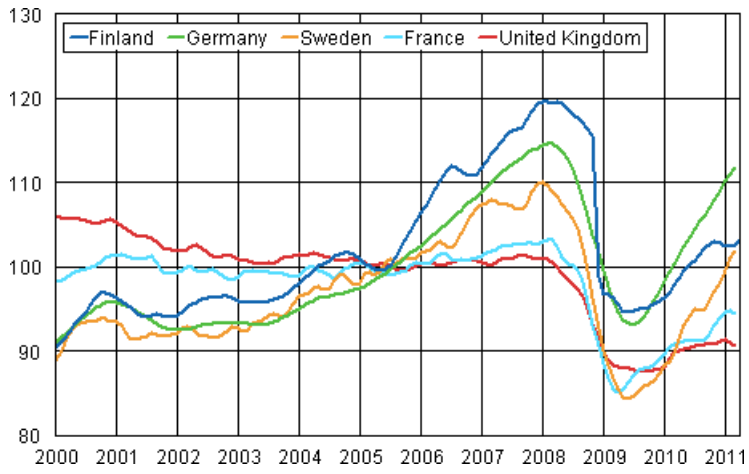
Appendix figure 1. Working day adjusted change percentage of industrial output April 2010 /April 2011, TOL 2008



Appendix figure 2. Seasonally adjusted change percentage of industrial output March 2011 /April 2011, TOL 2008



Appendix figure 3. Trend of industrial output Finland, Germany, Sweden, France and United Kingdom (BCD) 2000 - 2011, 2005=100, TOL 2008



Suomen virallinen tilasto
Finlands officiella statistik
Official Statistics of Finland

Industry 2011

Inquiries

Kari Rautio (09) 1734 2479

Director in charge:

Hannele Orjala

volyyimi.indeksi@stat.fi

www.stat.fi

Source: Volume Index of Industrial Output 2011, April. Statistics Finland