

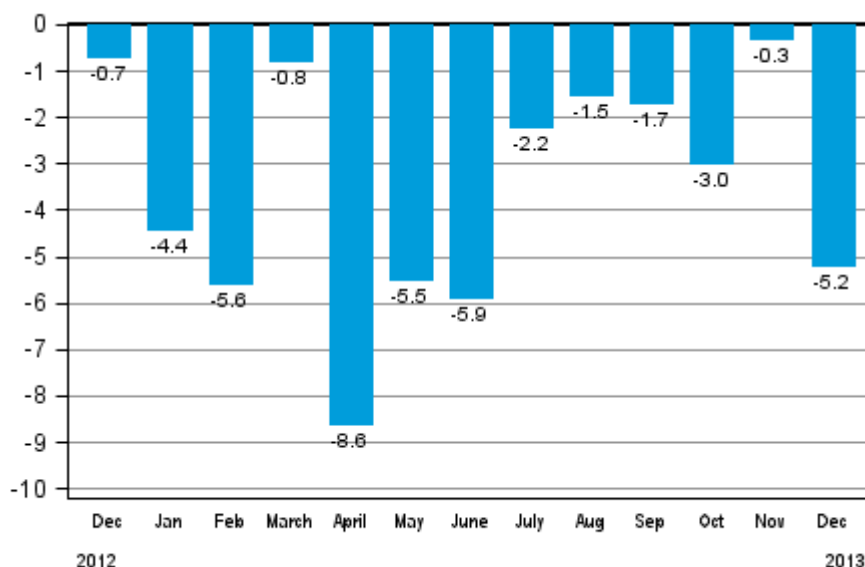
Volume index of industrial output

2013, December

Industrial output decreased by 5.2 per cent year-on-year in December

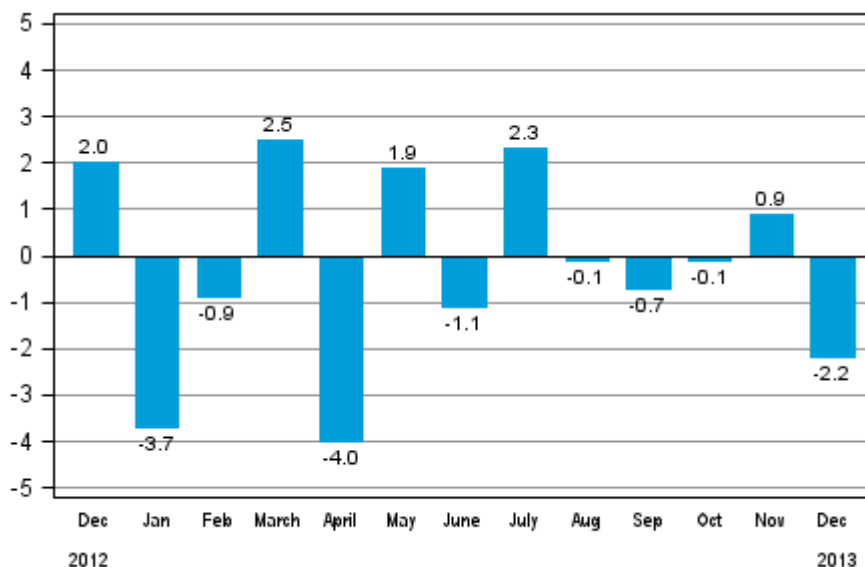
According to Statistics Finland, output of total industries adjusted for working days was 5.2 per cent lower in December 2013 compared to December 2012. According to preliminary data, industrial output decreased by 3.4 per cent in 2013 from the year before. According to preliminary data, industrial output decreased by around two per cent in 2012 from the year before. The last time industrial output has decreased in two successive years was in 1990 and 1991.

Working day adjusted change in total industrial output (BCDE) from corresponding month previous year, %, TOL 2008



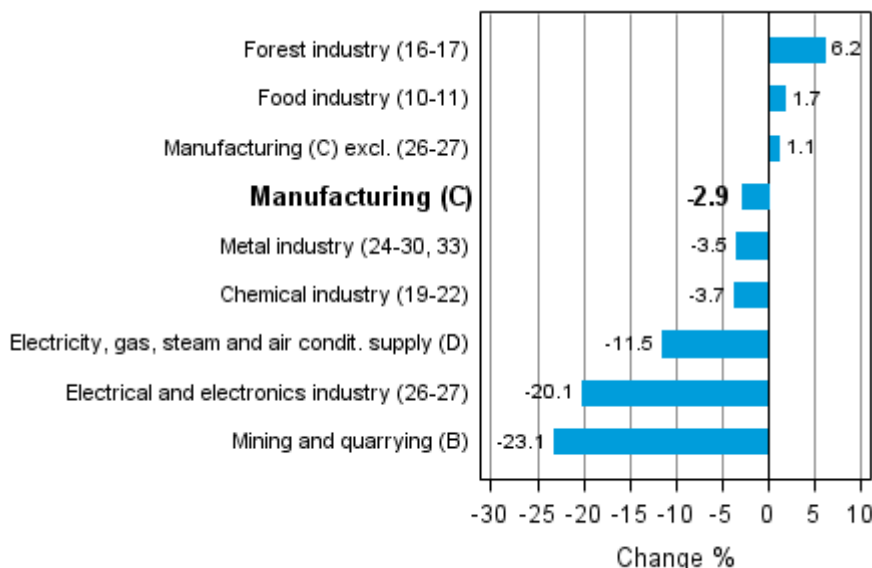
In December, seasonally adjusted output fell by 2.2 per cent from November. In November, seasonally adjusted output was 0.9 per cent higher than in October. In October, output decreased by 0.1 per cent from the previous month.

Seasonally adjusted change in total industrial output (BCDE) from previous month, %, TOL 2008



Industrial output diminished in several main industries in December. Output declined most, by 23.1 per cent, in mining and quarrying. In December, the output in the electrical and electronics industry was 20.1 per cent lower than in December 2012. In the chemical industry, output was 3.7 per cent down on December 2012. Among main industries, output increased by most, or by 6.2 per cent, in the forest industry. Output also grew in the food industry in December by 1.7 per cent from one year back.

Working day adjusted change in industrial output by industry 12/2012-12/2013, %, TOL 2008



Capacity utilisation rate in manufacturing (C) was 76.3 per cent in December, or 2.3 percentage points higher than one year earlier. In the forest industry, capacity utilisation rate was 76.7 per cent in December, or four percentage points higher than in December 2012. In the metal industry, capacity utilisation rate was 77.8 per cent in December, which was 2.2 percentage points higher than one year earlier.

Revised data for December 2013 will be published at 9 am on 10 March 2014 in connection with the release of industrial output data for January 2014. The revision is influenced by the estimation used in the latest release, which concerns the periodic tax return data used for enterprises with fewer than 50 employees. Because of the method used, seasonally adjusted figures for previous months may change even if the original figures do not become revised. The seasonally adjusted figures will also be adjusted for working days.

Contents

Industrial output decreased by 5.2 per cent year-on-year in December	5
--	---

Tables

Table 1. Volume index of industrial output, value added, original, working day adjusted, seasonally adjusted change percentage.....	6
---	---

Figures

Appendix figures

Appendix figure 1. Working day adjusted change percentage of industrial output December 2012 /December 2013, TOL 2008.....	7
Appendix figure 2. Seasonally adjusted change percentage of industrial output November 2013 /December 2013, TOL 2008.....	7
Appendix figure 3. Seasonally adjusted industrial output Finland, Germany, Sweden, France and United Kingdom (BCD) 2000 - 2013, 2010=100, TOL 2008.....	8

Revisions in these statistics.....	9
------------------------------------	---

Industrial output decreased by 5.2 per cent year-on-year in December

According to Statistics Finland, output of total industries adjusted for working days was 5.2 per cent lower in December 2013 compared to December 2012. Seasonally adjusted output decreased by 2.2 per cent in December from November.

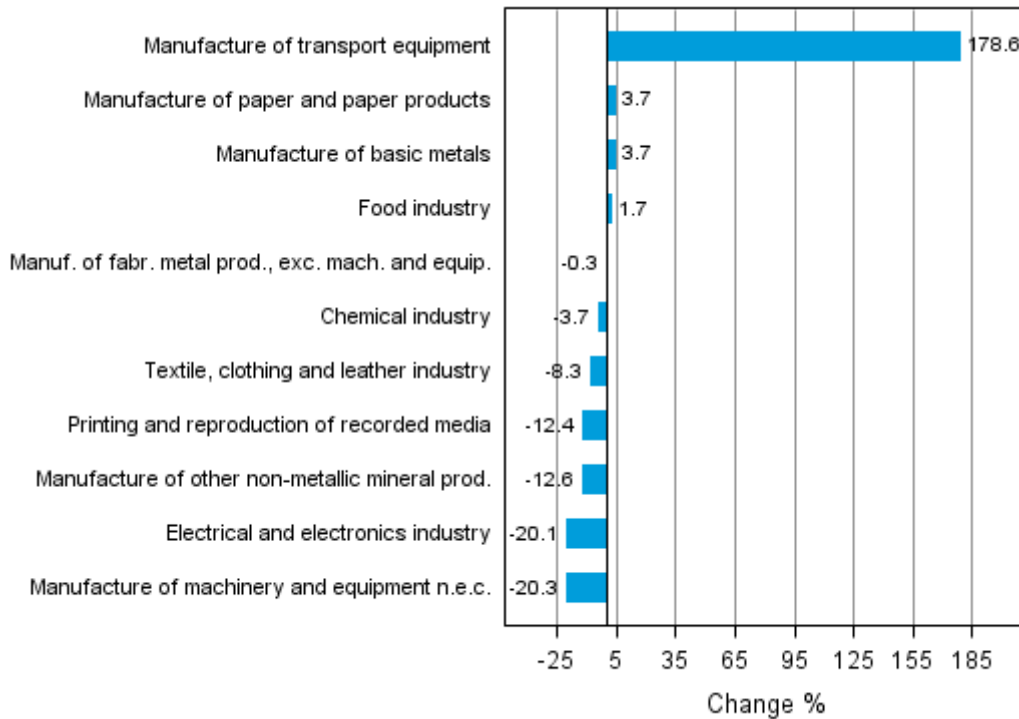
Adjusted for working days, industrial output (C) decreased by 2.9 per cent in December from one year back. In December, seasonally adjusted output fell by 1.2 per cent from November.

Table 1. Volume index of industrial output, value added, original, working day adjusted, seasonally adjusted change percentage

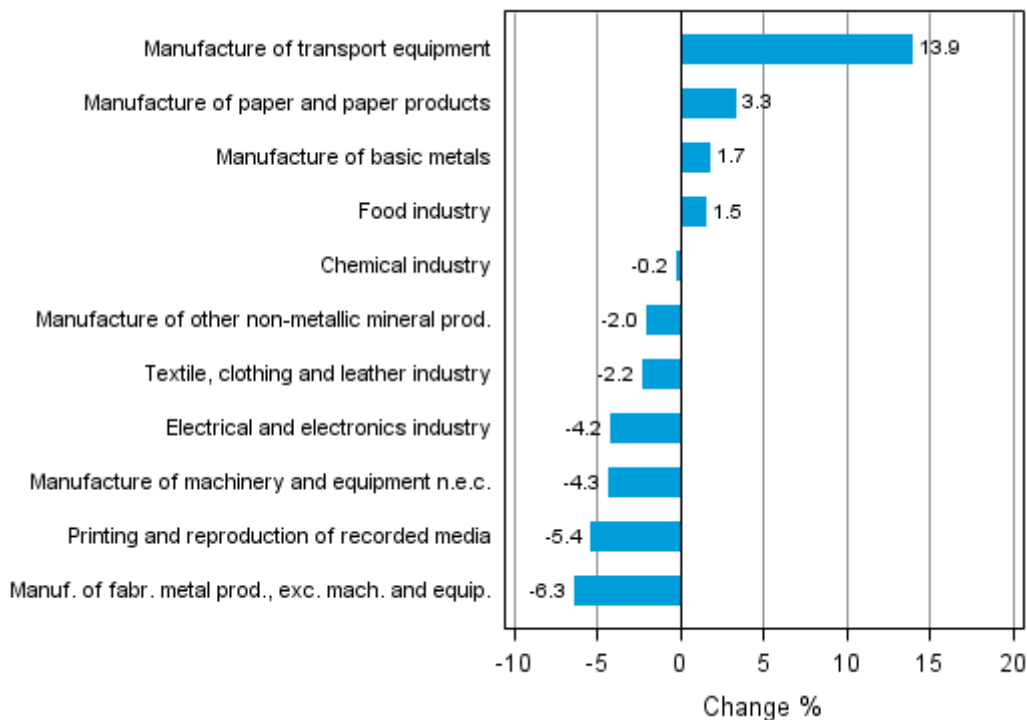
	Value added share	Original change percentage, 2013 DEC / 2012 DEC	Working day adj. change percentage, 2013 DEC / 2012 DEC	Seasonal adj. change percentage, 2013 DEC / 2013 NOV
Industry (Tol 2008)				
Total industries	100,0	-2,1	-5,2	-2,2
B Mining and quarrying	3,8	-19,0	-23,1	-14,0
C Manufacturing	82,9	0,3	-2,9	-1,2
10 Manufacture of food products	6,2	4,4	0,3	1,3
11 Manufacture of beverages	1,3	24,1	15,3	2,6
13 Manufacture of textiles	0,6	-3,5	-6,8	-2,9
14 Manufacture of wearing apparel	0,4	-10,3	-10,3	-0,1
15 Manufacture of leather and related products	0,3	0,8	0,8	2,4
16 Manufacture of wood and of products of wood and cork, except furniture; manufacture of articles of straw and plaiting materials	3,6	18,6	7,2	0,4
17 Manufacture of paper and paper products	9,5	3,7	3,7	3,3
18 Printing and reproduction of recorded media	1,7	-9,0	-12,4	-5,4
23 Manufacture of other non-metallic mineral products	3,6	-6,9	-12,6	-2,0
24 Manufacture of basic metals	4,2	7,4	3,7	1,7
25 Manufacture of fabricated metal products, except machinery and equipment	7,5	-0,3	-0,3	-6,3
28 Manufacture of machinery and equipment n.e.c.	13,3	-19,0	-20,3	-4,3
29 Manufacture of motor vehicles, trailers and semi-trailers	1,3	271,4	271,4	19,5
30 Manufacture of other transport equipment	1,3	121,3	121,3	5,6
31 Manufacture of furniture	1,1	-7,1	-7,1	0,5
32 Other manufacturing	0,8	-10,9	-13,7	-8,6
33 Repair and installation of machinery and equipment	3,1	-7,1	-8,2	-1,0
D Electricity, gas, steam and air conditioning supply	10,2	-11,4	-11,5	-2,9
E Water supply; sewerage, waste management and remediation activities	3,1	-1,4	-2,3	-0,4
36 Water collection, treatment and supply	1,6	-3,1	-3,1	-0,9
Main industrial groupings:				
Raw materials and productive goods	42,5	0,6	-2,2	-0,0
Investment goods	27,2	-1,1	-4,8	-3,7
Durable goods	1,5	-9,1	-14,9	-1,2
Other consumer goods	13,1	-2,6	-2,6	0,3
Special indices:				
10-11 Food industry	7,5	7,3	1,7	1,5
13-15 Textile, clothing and leather industry	1,3	-5,1	-8,3	-2,2
16-17 Forest industry	13,1	7,2	6,2	3,1
19-22 Chemical industry	13,1	-3,7	-3,7	-0,2
24-30 Metal industry	37,7	0,4	-3,3	-2,5
26-27 Electrical and electronics industry	10,2	-16,0	-20,1	-4,2
25,28-30,33 Machinery and metal product industry	26,4	5,0	1,8	-1,6
29-30 Manufacture of transport equipment	2,6	188,8	178,6	13,9

Appendix figures

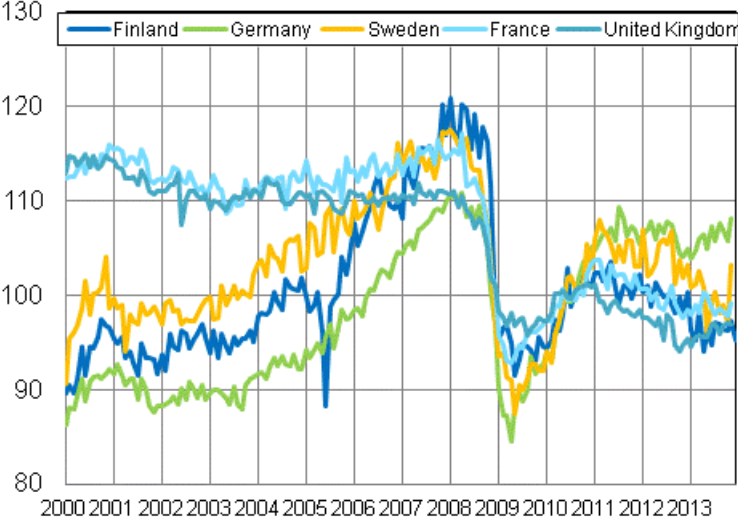
Appendix figure 1. Working day adjusted change percentage of industrial output December 2012 /December 2013, TOL 2008



Appendix figure 2. Seasonally adjusted change percentage of industrial output November 2013 /December 2013, TOL 2008



Appendix figure 3. Seasonally adjusted industrial output Finland, Germany, Sweden, France and United Kingdom (BCD) 2000 - 2013, 2010=100, TOL 2008



Revisions in these statistics

The data of the original series of industrial output have become revised according to the table below. For more information about data revisions, see Section 3 of the quality description (only in Finnish).

Revisions to data on annual changes in main industries

Main industries and Statistical reference month		Annual change (%)		Revision (%-point)
		1st release (%)	Latest release (10.02.2014) (%)	
BCDE Total industry	2013 / 07	-0,6	-0,2	0,4
	2013 / 08	-2,7	-2,7	0,0
	2013 / 09	-2,0	-1,1	0,9
	2013 / 10	-2,3	-2,2	0,1
	2013 / 11	-2,1	-1,7	0,4
C Manufacturing	2013 / 07	-2,7	-2,3	0,4
	2013 / 08	-6,0	-6,0	0,0
	2013 / 09	-2,8	-1,7	1,1
	2013 / 10	-2,5	-2,3	0,2
	2013 / 11	-2,5	-2,0	0,5
D Electricity, gas, steam and air conditioning supply	2013 / 07	-2,4	-2,4	0,0
	2013 / 08	2,3	2,3	0,0
	2013 / 09	0,5	0,5	0,0
	2013 / 10	-2,3	-2,3	0,0
	2013 / 11	-1,6	-1,8	-0,2
10-11 Food industry	2013 / 07	7,3	8,0	0,7
	2013 / 08	-4,1	-3,9	0,2
	2013 / 09	-1,9	-1,3	0,6
	2013 / 10	0,8	0,8	0,0
	2013 / 11	-3,6	-3,7	-0,1
16-17 Forest industry	2013 / 07	-1,3	-1,0	0,3
	2013 / 08	-3,7	-4,0	-0,3
	2013 / 09	1,3	2,3	1,0
	2013 / 10	2,7	2,7	0,0
	2013 / 11	-3,3	-2,9	0,4
19-22 Chemical industry	2013 / 07	2,5	0,8	-1,7
	2013 / 08	-5,2	-5,0	0,2
	2013 / 09	14,8	17,2	2,4
	2013 / 10	4,3	4,1	-0,2
	2013 / 11	-3,5	-4,2	-0,7
24-30, 33 Metal industry	2013 / 07	-5,4	-4,8	0,6
	2013 / 08	-5,3	-5,1	0,2
	2013 / 09	-8,2	-7,6	0,6
	2013 / 10	-4,9	-4,5	0,4
	2013 / 11	-1,0	0,0	1,0
26-27 Electrical and electronics industry	2013 / 07	-17,0	-17,2	-0,2
	2013 / 08	-17,1	-18,6	-1,5
	2013 / 09	-18,8	-9,3	9,5
	2013 / 10	-13,9	-13,9	0,0
	2013 / 11	-11,2	-11,1	0,1

Main industries and Statistical reference month		Annual change (%)		Revision (%-point)
		1st release (%)	Latest release (10.02.2014) (%)	
Manufacturing excl. electrical and electronics industry	2013 / 07	-0,5	-0,0	0,5
	2013 / 08	-4,6	-4,4	0,2
	2013 / 09	-0,6	-0,7	-0,1
	2013 / 10	-1,0	-0,7	0,3
	2013 / 11	-1,3	-0,8	0,5

Inquiries

Kari Rautio 09 1734 2479

Salla Simola 09 1734 3308

Director in charge:

Hannele Orjala

volyymi.indeksi@stat.fi

www.stat.fi

Source: Volume Index of Industrial Output 2013, December. Statistics Finland