

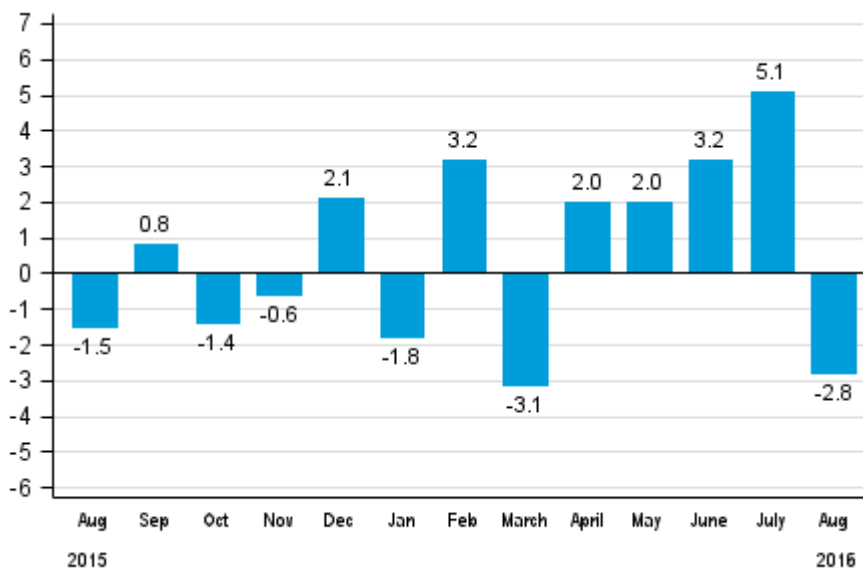
Volume index of industrial output

2016, August

Industrial output decreased by 2.8 per cent year-on-year in August

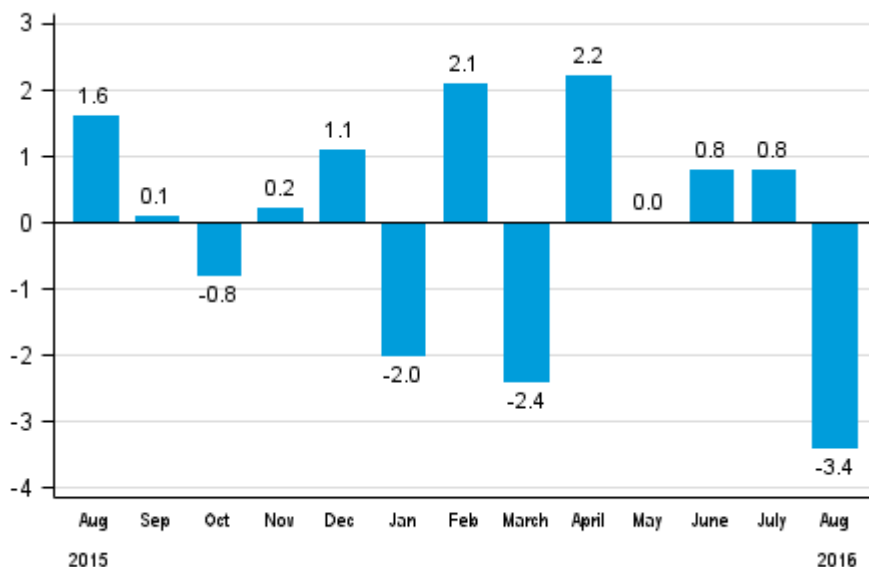
According to Statistics Finland, output of total industries adjusted for working days was 2.8 per cent lower in August 2016 than in August 2015. In the January to August period, industrial output adjusted for working days went up by one per cent from one year ago. August 2016 had two working days more than August 2015. Original industrial output grew by 1.9 per cent.

Working day adjusted change in total industrial output (BCDE) from corresponding month previous year, %, TOL 2008



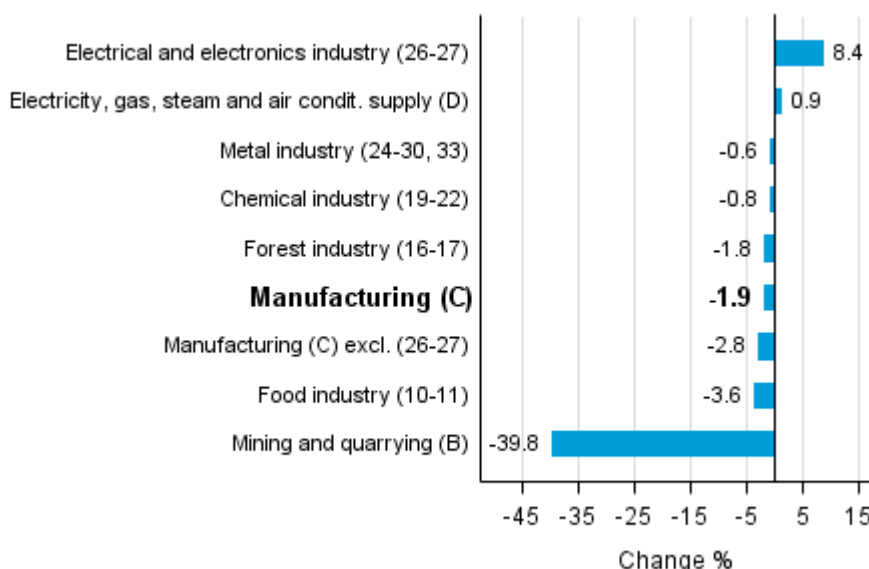
Seasonally adjusted output decreased by 3.4 per cent in August. In July, output increased by 0.8 per cent from the previous month. In June, seasonally adjusted output grew by 0.8 per cent from May.

Seasonally adjusted change in total industrial output (BCDE) from previous month, %, TOL 2008



Among the main industries, output decreased most in mining and quarrying, by 39.8 per cent. The rainy August did not favour peat production. In the metal industry, output decreased by 0.6 per cent in August from twelve months back. In the chemical industry, output decreased by 0.8 per cent from twelve months back. In the food industry, output declined by 3.6 per cent in August. Among the main industries, output increased by nearly one per cent in the generation of electricity in August. In addition, output in the electrical and electronics industry was 8.4 per cent up on twelve months back.

Working day adjusted change in industrial output by industry 8/2015-8/2016, %, TOL 2008



Capacity utilisation rate in manufacturing (C) was 80.2 per cent in August, which was 0.2 percentage point lower than one year earlier. In the forest industry, capacity utilisation rate was 88.1 per cent in August, or 3.9 percentage points higher than in August 2015. In the metal industry, capacity utilisation rate was 79.7 per cent in August, which was 2.1 percentage points lower than one year earlier.

Revised data for August 2016 will be published at 9 am on 10 November 2016 in connection with the release of industrial output data for September 2016. The revision is influenced by the estimation used in the latest release, which concerns the periodic tax return data used for enterprises with fewer than 50 employees. Because of the method used, seasonally adjusted figures for previous months may change even if the original figures do not become revised. The seasonally adjusted figures will also be adjusted for working days.

Contents

Industrial output decreased by 2.8 per cent year-on-year in August.....	5
---	---

Tables

Table 1. Volume index of industrial output, value added, original, working day adjusted, seasonally adjusted change percentage.....	6
---	---

Figures

Appendix figures

Appendix figure 1. Working day adjusted change percentage of industrial output August 2015 /August 2016, TOL 2008.....	7
--	---

Appendix figure 2. Seasonally adjusted change percentage of industrial output July 2016 /August 2016, TOL 2008.....	7
---	---

Appendix figure 3. Seasonally adjusted industrial output Finland, Germany, Sweden, France and United Kingdom (BCD) 2005 - 2016, 2010=100, TOL 2008.....	8
---	---

Revisions in these statistics.....	9
------------------------------------	---

Industrial output decreased by 2.8 per cent year-on-year in August

According to Statistics Finland, output of total industries adjusted for working days was 2.8 per cent lower in August 2016 than twelve months earlier. In August, seasonally adjusted output went down by 3.4 per cent from July.

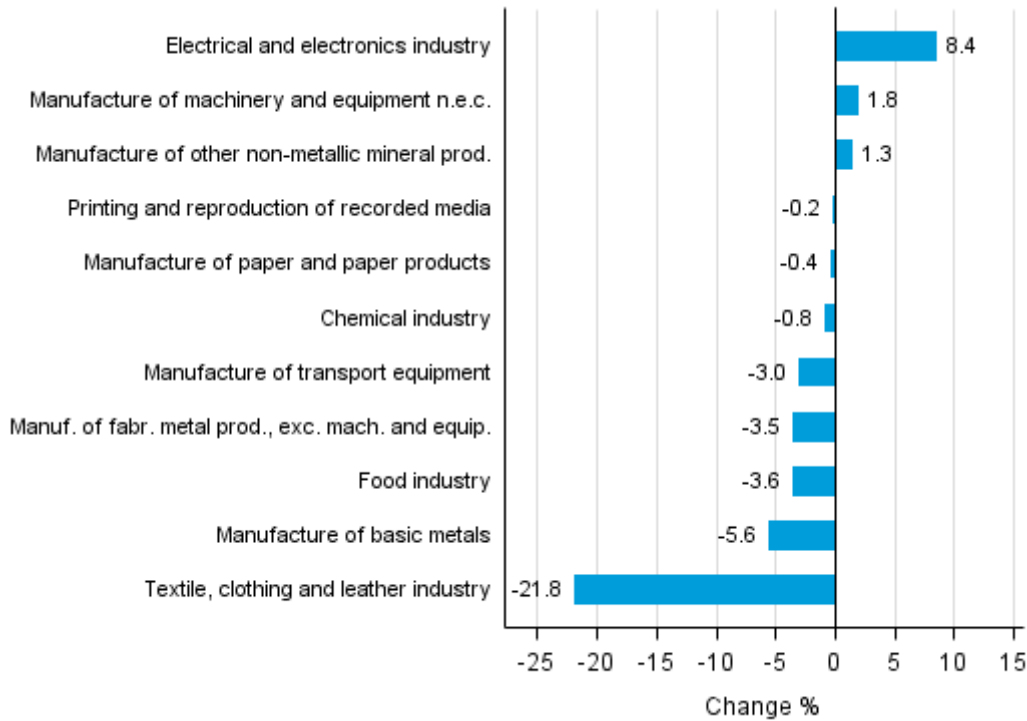
Adjusted for working days, industrial output (C) decreased by 1.9 per cent in August from one year back. In August, seasonally adjusted output went down by 3 per cent from July.

Table 1. Volume index of industrial output, value added, original, working day adjusted, seasonally adjusted change percentage

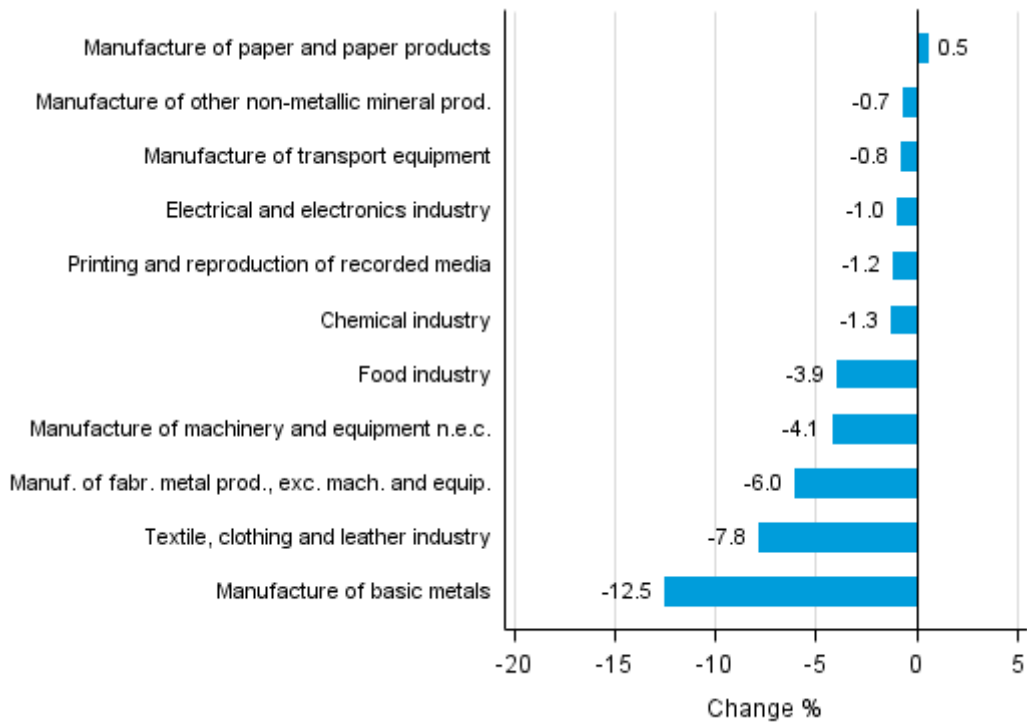
	Value added share	Original change percentage, 2016 AUG / 2015 AUG	Working day adj. change percentage, 2016 AUG / 2015 AUG	Seasonal adj. change percentage, 2016 AUG / 2016 JUL
Industry (Tot 2008)				
Total industries	100,0	1,9	-2,8	-3,4
B Mining and quarrying	1,0	-39,8	-39,8	-40,8
C Manufacturing	85,3	3,5	-1,9	-3,0
10 Manufacture of food products	7,3	2,7	-4,5	-4,0
11 Manufacture of beverages	1,2	9,4	1,5	-4,2
13 Manufacture of textiles	0,6	0,9	-6,9	-2,9
14 Manufacture of wearing apparel	0,5	-13,9	-20,1	-0,5
15 Manufacture of leather and related products	0,3	-3,6	-3,6	-2,5
16 Manufacture of wood and of products of wood and cork, except furniture; manufacture of articles of straw and plaiting materials	4,3	2,2	-4,9	-2,0
17 Manufacture of paper and paper products	9,1	-0,4	-0,4	0,5
18 Printing and reproduction of recorded media	1,6	5,8	-0,2	-1,2
23 Manufacture of other non-metallic mineral products	3,2	8,8	1,3	-0,7
24 Manufacture of basic metals	5,0	-2,3	-5,6	-12,5
25 Manufacture of fabricated metal products, except machinery and equipment	7,4	2,4	-3,5	-6,0
28 Manufacture of machinery and equipment n.e.c.	11,4	8,6	1,8	-4,1
31 Manufacture of furniture	0,9	7,8	-1,4	-2,6
32 Other manufacturing	0,8	3,8	3,8	3,2
33 Repair and installation of machinery and equipment	4,7	-2,4	-6,5	-1,6
D Electricity, gas, steam and air conditioning supply	10,8	0,9	0,9	1,0
E Water supply; sewerage, waste management and remediation activities	2,9	-1,2	-1,2	1,0
36 Water collection, treatment and supply	0,4	2,4	2,4	-0,7
Main industrial groupings:				
Raw materials and productive goods	41,6	0,5	-2,9	-3,7
Investment goods	27,6	6,6	0,8	-2,9
Durable goods	1,3	7,1	-2,3	-2,5
Other consumer goods	14,8	-1,6	-8,6	-6,6
Special indices:				
10-11 Food industry	8,5	3,7	-3,6	-3,9
13-15 Textile, clothing and leather industry	1,3	-5,6	-21,8	-7,8
16-17 Forest industry	13,5	0,4	-1,8	-0,6
19-22 Chemical industry	13,1	-0,8	-0,8	-1,3
24-30 Metal industry	37,6	6,8	0,3	-3,4
26-27 Electrical and electronics industry	11,1	15,5	8,4	-1,0
25,28-30,33 Machinery and metal product industry	26,2	3,6	-3,0	-3,8
29-30 Manufacture of transport equipment	2,6	-3,0	-3,0	-0,8

Appendix figures

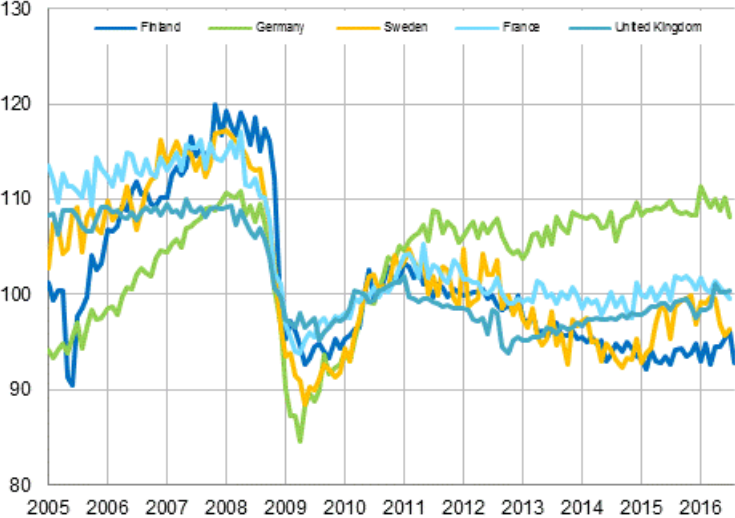
Appendix figure 1. Working day adjusted change percentage of industrial output August 2015 /August 2016, TOL 2008



Appendix figure 2. Seasonally adjusted change percentage of industrial output July 2016 /August 2016, TOL 2008



Appendix figure 3. Seasonally adjusted industrial output Finland, Germany, Sweden, France and United Kingdom (BCD) 2005 - 2016, 2010=100, TOL 2008



Revisions in these statistics

The data of the original series of industrial output have become revised according to the table below. For more information about data revisions, see Section 3 of the quality description (only in Finnish).

Revisions to data on annual changes in main industries

Main industries and Statistical reference month		Annual change (%)		Revision (%-point)
		1st release (%)	Latest release (10.10.2016) (%)	
BCDE Total industry	2016 / 03	-2,6	-4,2	-1,6
	2016 / 04	4,3	4,1	-0,2
	2016 / 05	5,5	6,4	0,9
	2016 / 06	4,6	3,4	-1,2
	2016 / 07	1,9	0,5	-1,4
C Manufacturing	2016 / 03	-3,1	-4,9	-1,8
	2016 / 04	4,6	4,5	-0,1
	2016 / 05	6,2	7,3	1,1
	2016 / 06	4,5	3,2	-1,3
	2016 / 07	1,8	0,2	-1,6
D Electricity, gas, steam and air conditioning supply	2016 / 03	0,5	0,5	0,0
	2016 / 04	0,2	0,2	0,0
	2016 / 05	-8,4	-8,4	0,0
	2016 / 06	-11,7	-11,7	0,0
	2016 / 07	-6,2	-6,2	0,0
10-11 Food industry	2016 / 03	2,1	1,4	-0,7
	2016 / 04	4,3	4,7	0,4
	2016 / 05	6,8	7,5	0,7
	2016 / 06	5,8	7,0	1,2
	2016 / 07	-3,2	-3,2	0,0
16-17 Forest industry	2016 / 03	-1,4	-1,4	0,0
	2016 / 04	-0,8	0,3	1,1
	2016 / 05	3,1	3,1	0,0
	2016 / 06	-1,6	-2,2	-0,6
	2016 / 07	-1,8	-2,5	-0,7
19-22 Chemical industry	2016 / 03	-9,7	-9,4	0,3
	2016 / 04	6,6	6,5	-0,1
	2016 / 05	-1,5	0,0	1,5
	2016 / 06	0,4	1,5	1,1
	2016 / 07	4,8	2,7	-2,1
24-30, 33 Metal industry	2016 / 03	-2,1	-5,4	-3,3
	2016 / 04	6,0	4,8	-1,2
	2016 / 05	10,2	10,9	0,7
	2016 / 06	7,8	5,2	-2,6
	2016 / 07	3,7	2,3	-1,4
26-27 Electrical and electronics industry	2016 / 03	-0,6	-4,5	-3,9
	2016 / 04	3,6	-3,3	-6,9
	2016 / 05	1,1	0,8	-0,3
	2016 / 06	-2,4	-2,8	-0,4
	2016 / 07	3,6	2,8	-0,8

Main industries and Statistical reference month		Annual change (%)		Revision (%-point)
		1st release (%)	Latest release (10.10.2016) (%)	
Manufacturing excl. electrical and electronics industry	2016 / 03	-3,5	-4,9	-1,4
	2016 / 04	4,7	5,6	0,9
	2016 / 05	7,0	8,2	1,2
	2016 / 06	5,6	4,1	-1,5
	2016 / 07	1,5	-0,2	-1,7

Inquiries

Kari Rautio 029 551 2479

Heidi Myllylä 029 551 3792

Director in charge:

Mari Ylä-Jarkko

volyyimi.indeksi@stat.fi

www.stat.fi

Source: Volume Index of Industrial Output 2016, August. Statistics Finland