

Job vacancy survey

2011, 1st quarter

More open job vacancies in the first quarter than one year earlier

According to the Job Vacancy Survey of Statistics Finland, there were 59,000 open job vacancies in the first quarter of 2011, which is 19 per cent more than one year earlier (49,700). The measurement for the first quarter was taken on 1 March.

Job vacancies 2010/I – 2011/I

	Year/Quarter	
	2010/I	2011/I
Job vacancies	49 700	59 000
Part-time	22 %	22 %
Fixed term	60 %	53 %
Hard-to-fill vacancies	23 %	36 %

In all, 41,500, or 70 per cent, of the job vacancies in the first quarter of 2011 were in private enterprises. Open job vacancies increased at all establishments apart from the smallest ones employing 1 to 4 persons. Compared with the quarter one year earlier, the number of job vacancies went up especially in trade, transportation and accommodation and food service (5,400), and in professional, scientific and technical activities (2,200). Examined by region, open job vacancies increased in Uusimaa and elsewhere in Southern Finland, in particular.

In the first quarter of 2011, the share of part-time vacancies among all vacancies remained unchanged but the share of fixed-term vacancies decreased by seven percentage points from the respective quarter of the year before. The proportion of hard-to-fill vacancies, in turn, grew from 23 to 36 per cent. Thus, employers had more recruitment problems in the first quarter than twelve months earlier.

Statistics Finland has been collecting data on job vacancies quarterly since the beginning of 2002. The statistics are based on a sample of establishments of enterprises and general government. The data are collected with telephone interviews and web questionnaires. The statistics are decreed by a regulation of the European Union. The objective is to produce up-to-date and comparable information about the number and structure of job openings on the labour markets of EU Member States.

Contents

Tables

Appendix tables

Appendix table 1. Job vacancies by the quarters 2010/I - 2011/I.....	3
Appendix table 2. Job vacancies by size of the local kind of activity unit 2010/I - 2011/I.....	3
Appendix table 3. Job vacancies by employer sector of the local kind of activity unit 2010/I - 2011/I.....	3
Appendix table 4. Job vacancies by province 2010/I - 2011/I.....	3
Appendix table 5. Job vacancies by industry 2010/I - 2011/I.....	4
Appendix table 6. Part-time vacancies by province 2010/I - 2011/I.....	4
Appendix table 7. Part-time vacancies by industry 2010/I - 2011/I.....	5
Appendix table 8. Fixed-term vacancies by province 2010/I - 2011/I.....	5
Appendix table 9. Fixed-term vacancies by industry 2010/I - 2011/I.....	6
Appendix table 10. Hard-to-fill vacancies by province 2010/I - 2011/I.....	6
Appendix table 11. Hard-to-fill vacancies by industry 2010/I - 2011/I.....	7

Figures

Appendix figures

Appendix figure 1. Job vacancies by the quarters.....	8
Appendix figure 2. Job vacancies by type of employment relationship	8
Appendix figure 3. Job vacancies by employer sector.....	9
Appendix figure 4. Job vacancies by size of the local kind of activity unit.....	9
Appendix figure 5. Job vacancies by province.....	10
Appendix figure 6. Job vacancies by industry.....	10

Appendix tables

Appendix table 1. Job vacancies by the quarters 2010/I - 2011/I

	Year/Quarter					Change	Change (%)
	2010/I	2010/II	2010/III	2010/IV	2011/I	2011/I - 2010/I	2011/I - 2010/I
Job vacancies							
Total	49 700	48 600	36 900	32 700	59 000	9 300	19
Unoccupied	23 100	25 400	21 100	17 900	23 800	600	3
Part-time	10 800	15 700	11 900	5 000	12 800	2 000	18
Fixed term	30 000	30 400	19 100	12 200	31 400	1 400	5
Hard to Fill	11 500	20 000	17 600	13 800	21 100	9 600	83

Appendix table 2. Job vacancies by size of the local kind of activity unit 2010/I - 2011/I

	Year/Quarter					Change	Change (%)
	2010/I	2010/II	2010/III	2010/IV	2011/I	2011/I - 2010/I	2011/I - 2010/I
Employees							
Total	49 700	48 600	36 900	32 700	59 000	9 300	19
1-4 persons	11 400	8 800	4 700	6 000	8 800	-2 600	-23
5-10 persons	8 100	9 300	9 200	7 600	12 700	4 600	56
11-99 persons	20 400	24 600	16 600	14 100	26 300	5 900	29
More than 100	9 800	5 800	6 400	4 900	11 200	1 500	15

Appendix table 3. Job vacancies by employer sector of the local kind of activity unit 2010/I - 2011/I

	Year/Quarter					Change	Change (%)
	2010/I	2010/II	2010/III	2010/IV	2011/I		
Employer							
Employers total	49 700	48 600	36 900	32 700	59 000	9 300	19
Private enterprise	34 800	26 400	26 000	22 400	41 500	6 700	19
Local Government	8 200	15 300	7 800	6 000	12 200	4 000	49
Central Government	1 500	1 400	600	1 000	1 100	-400	-26
Non-Profit Organization	2 800	3 900	1 500	1 900	2 500	-300	-11
Other	2 500	1 600	1 100	1 300	1 800	-700	-27

Appendix table 4. Job vacancies by province 2010/I - 2011/I

Corrected on 16 May 2012. The corrections are indicated in red. The figures in the table are not congruent with the classification of major regions but with that of provinces.

	Year/Quarter					Change	Change (%)
	2010/I	2010/II	2010/III	2010/IV	2011/I	2011/I - 2010/I	2011/I - 2010/I
Province							
Total	49 700	48 600	36 900	32 700	59 000	9 300	19
Uusimaa	17 100	13 000	10 300	12 200	20 600	3 400	20
Southern Finland (excl. Uusimaa)	3 800	7 800	5 800	3 200	7 000	3 200	85
Western Finland	19 000	17 200	12 400	10 400	19 800	800	4
Eastern Finland	4 000	4 800	4 000	3 900	4 300	400	9
Oulu and Lapland	5 900	5 800	4 300	2 900	7 300	1 400	25

Appendix table 5. Job vacancies by industry 2010/I - 2011/I

	Year/Quarter					Change	Change (%)
	2010/I	2010/II	2010/III	2010/IV	2011/I	2011/I - 2010/I	2011/I - 2010/I
Industry (TOL 2008)							
Total	49 700	48 600	36 900	32 700	59 000	9 300	19
A Agriculture, forestry and fishing (01–03)	1 500	800	400	1 200	1 300	-200	-13
B-E Manufacturing; Mining and quarrying and other industry (05–39)	7 400	5 100	3 900	3 900	7 100	-300	-4
F Construction (41–43)	1 400	2 200	2 200	1 900	2 600	1 200	87
G-I Wholesale and retail trade; Transportation and storage; Accommodation and food service (45–56)	13 500	10 700	7 900	7 300	18 900	5 400	40
J Information and communication (58–63)	2 600	1 400	2 600	2 400	3 400	800	29
K,L Financial and insurance activities; Real estate activities (64–68)	1 700	400	1 500	1 100	1 100	-700	-38
M,N Professional, scientific and technical activities; Administrative and support service activities (69–82)	6 600	6 800	8 600	5 400	8 800	2 200	34
O-Q Public administration; Education, Human health and social work activities (84–88)	10 900	18 900	7 600	7 800	11 400	500	4
R-S Other service activities (90–96)	4 000	2 300	2 300	1 700	4 400	400	9

Appendix table 6. Part-time vacancies by province 2010/I - 2011/I

Corrected on 16 May 2012. The corrections are indicated in red. The figures in the table are not congruent with the classification of major regions but with that of provinces.

	Year/Quarter					Change	Change (%)
	2010/I	2010/II	2010/III	2010/IV	2011/I	2011/I - 2010/I	2011/I - 2010/I
Province							
Total	10 800	15 700	11 900	5 000	12 800	2 000	18
Uusimaa	3 400	3 200	3 300	1 500	4 800	1 500	44
Southern Finland (excl. Uusimaa)	1 200	3 000	2 000	600	800	-400	-33
Western Finland	3 100	6 300	3 700	1 800	4 000	900	30
Eastern Finland	1 600	1 600	1 800	600	1 900	300	22
Oulu and Lapland	1 700	1 700	1 200	500	1 300	-300	-21

Appendix table 7. Part-time vacancies by industry 2010/I - 2011/I

	Year/Quarter					Change	Change (%)
	2010/I	2010/II	2010/III	2010/IV	2011/I	2011/I - 2010/I	2011/I - 2010/I
Industry (TOL 2008)							
Total	10 800	15 700	11 900	5 000	12 800	2 000	18
A Agriculture, forestry and fishing (01–03)	100	400	100	200	100	0	33
B-E Manufacturing; Mining and quarrying and other industry (05–39)	1 000	500	500	500	200	-800	-76
F Construction (41–43)	200	300	300	100	0	-100	-87
G-I Wholesale and retail trade; Transportation and storage; Accommodation and food service (45–56)	4 300	5 200	2 900	1 800	5 800	1 500	35
J Information and communication (58–63)	200	200	700	100	500	300	134
K,L Financial and insurance activities; Real estate activities (64–68)	500	0	500	0	100	-500	-85
M,N Professional, scientific and technical activities; Administrative and support service activities (69–82)	1 800	1 700	4 000	1 600	1 100	-700	-37
O-Q Public administration; Education, Human health and social work activities (84–88)	2 000	5 900	2 000	700	1 600	-500	-23
R-S Other service activities (90–96)	700	1 500	800	200	3 400	2 700	.

Appendix table 8. Fixed-term vacancies by province 2010/I - 2011/I

Corrected on 16 May 2012. The corrections are indicated in red. The figures in the table are not congruent with the classification of major regions but with that of provinces.

	Year/Quarter					Change	Change (%)
	2010/I	2010/II	2010/III	2010/IV	2011/I	2011/I - 2010/I	2011/I - 2010/I
Province							
Total	30 000	30 400	19 100	12 200	31 400	1 400	5
Uusimaa	9 400	6 800	4 100	3 700	8 900	-500	-5
Southern Finland (excl. Uusimaa)	2 600	4 700	2 900	1 300	4 500	1 900	73
Western Finland	11 200	11 500	7 200	4 300	10 600	-600	-5
Eastern Finland	2 700	3 100	2 400	1 400	2 700	-100	-2
Oulu and Lapland	4 000	4 300	2 500	1 600	4 700	600	16

Appendix table 9. Fixed-term vacancies by industry 2010/I - 2011/I

	Year/Quarter					Change	Change (%)
	2010/I	2010/II	2010/III	2010/IV	2011/I	2011/I - 2010/I	2011/I - 2010/I
Industry (TOL 2008)							
Total	30 000	30 400	19 100	12 200	31 400	1 400	5
A Agriculture, forestry and fishing (01–03)	1 300	500	100	500	900	-500	-35
B-E Manufacturing; Mining and quarrying and other industry (05–39)	4 500	3 800	2 200	900	4 800	300	8
F Construction (41–43)	700	1 000	700	300	1 000	300	51
G-I Wholesale and retail trade; Transportation and storage; Accommodation and food service (45–56)	9 300	5 600	4 000	2 500	10 500	1 200	12
J Information and communication (58–63)	900	500	1 000	600	800	-100	-6
K,L Financial and insurance activities; Real estate activities (64–68)	700	200	800	500	400	-300	-44
M,N Professional, scientific and technical activities; Administrative and support service activities (69–82)	4 400	4 100	3 900	1 800	3 800	-600	-15
O-Q Public administration; Education, Human health and social work activities (84–88)	4 900	12 800	5 300	4 300	5 300	400	9
R-S Other service activities (90–96)	3 200	1 900	1 100	800	3 800	600	19

Appendix table 10. Hard-to-fill vacancies by province 2010/I - 2011/I

Corrected on 16 May 2012. The corrections are indicated in red. The figures in the table are not congruent with the classification of major regions but with that of provinces.

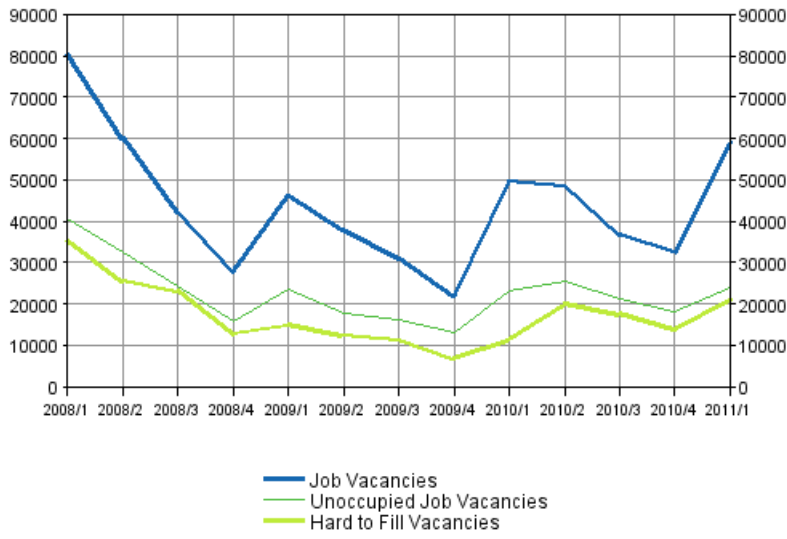
	Year/Quarter					Change	Change (%)
	2010/I	2010/II	2010/III	2010/IV	2011/I	2011/I - 2010/I	2011/I - 2010/I
Province							
Total	11 500	20 000	17 600	13 800	21 100	9 600	83
Uusimaa	3 600	6 600	4 100	6 500	8 200	4 700	131
Southern Finland (excl. Uusimaa)	800	1 600	2 500	1 000	2 300	1 500	182
Western Finland	5 600	7 400	6 200	3 500	6 900	1 300	24
Eastern Finland	500	2 200	3 000	1 700	1 200	800	161
Oulu and Lapland	1 100	2 300	1 800	1 100	2 500	1 400	125

Appendix table 11. Hard-to-fill vacancies by industry 2010/I - 2011/I

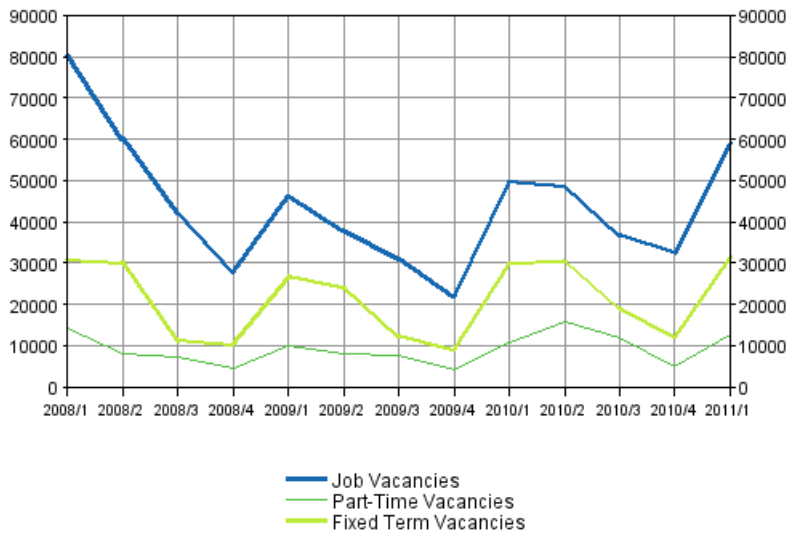
	Year/Quarter					Change	Change (%)
	2010/I	2010/II	2010/III	2010/IV	2011/I	2011/I - 2010/I	2011/I - 2010/I
Industry (TOL 2008)							
Total	11 500	20 000	17 600	13 800	21 100	9 600	83
A Agriculture, forestry and fishing (01–03)	100	100	200	700	500	400	.
B-E Manufacturing; Mining and quarrying and other industry (05–39)	1 000	1 300	1 200	1 400	2 000	1 000	94
F Construction (41–43)	700	800	1 000	1 100	1 300	600	89
G-I Wholesale and retail trade; Transportation and storage; Accommodation and food service (45–56)	2 500	4 400	3 900	3 000	7 200	4 700	191
J Information and communication (58–63)	1 400	900	1 500	1 700	1 500	100	11
K,L Financial and insurance activities; Real estate activities (64–68)	400	0	500	200	100	-300	-80
M,N Professional, scientific and technical activities; Administrative and support service activities (69–82)	2 200	2 700	5 400	2 800	3 100	900	41
O-Q Public administration; Education, Human health and social work activities (84–88)	2 600	9 300	3 100	2 500	4 100	1 500	59
R-S Other service activities (90–96)	700	400	900	400	1 400	700	100

Appendix figures

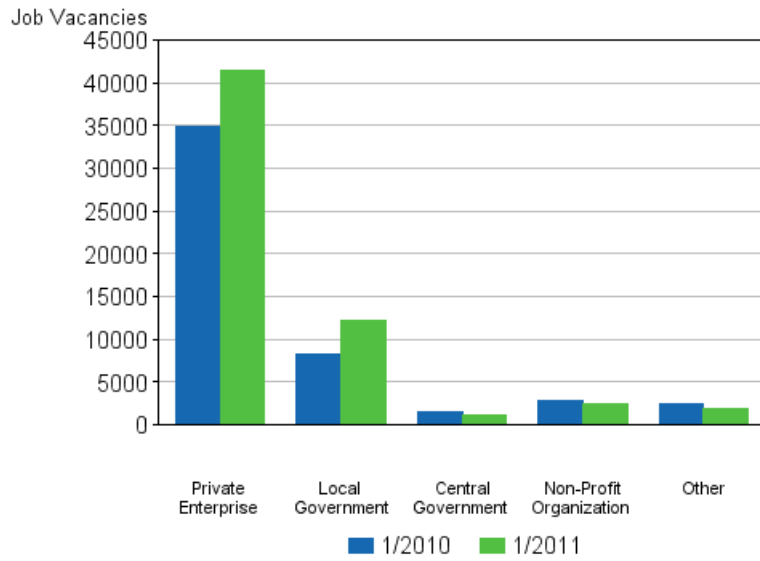
Appendix figure 1. Job vacancies by the quarters



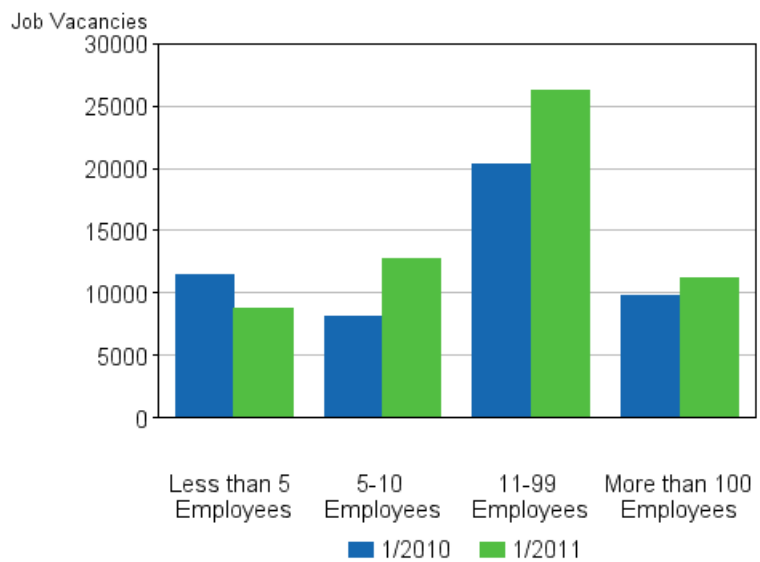
Appendix figure 2. Job vacancies by type of employment relationship



Appendix figure 3. Job vacancies by employer sector



Appendix figure 4. Job vacancies by size of the local kind of activity unit



Appendix figure 5. Job vacancies by province

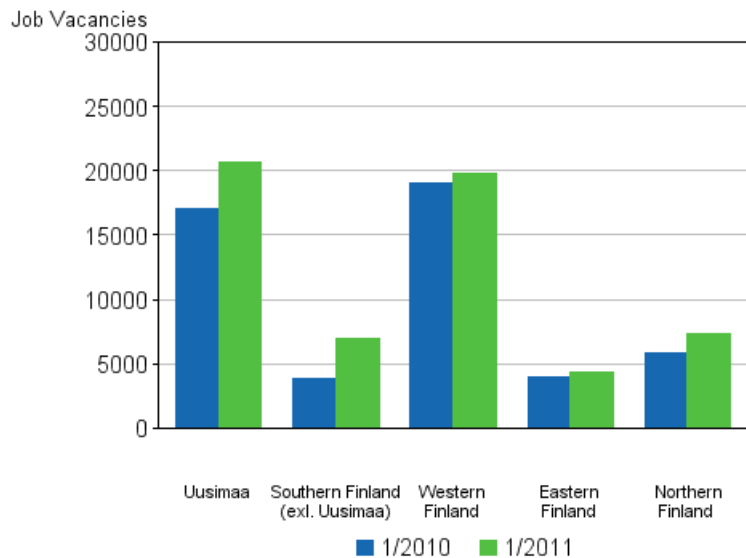
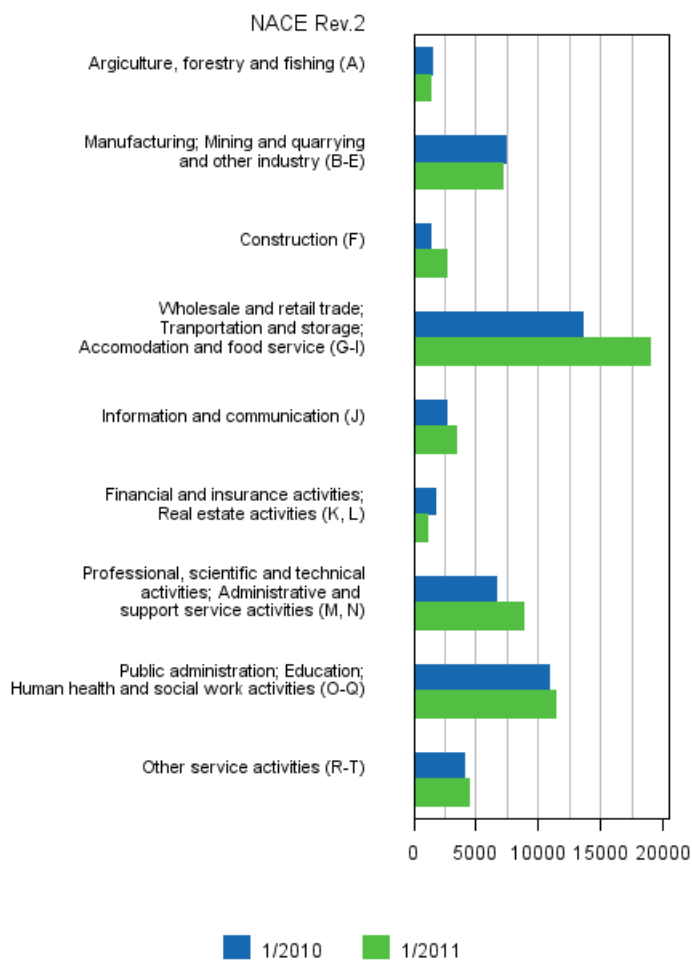


Table heading corrected on 16 May 2012, was previously by major region. Northern Finland = Oulu and Lapland.

Appendix figure 6. Job vacancies by industry



Suomen virallinen tilasto
Finlands officiella statistik
Official Statistics of Finland

Labour Market 2011

Inquiries

Antti Halmetoja (09) 1734 3763

Director in charge:

Riitta Harala

tyovoimatutkimus@stat.fi

www.stat.fi

Source: Job vacancy survey 2011, 1st quarter 2010. Statistics Finland.