

Job vacancy survey

2011, 4th quarter

Number of open job vacancies in the last quarter equal to one year earlier

According to the Job Vacancy Survey of Statistics Finland, there were 33,500 open job vacancies in the last quarter of 2011, which is almost equal to one year ago (32,700). The measurement for the last quarter was taken on 1 December. In the whole of 2011, there were nine per cent more open job vacancies, on the average, than in 2010.

Job vacancies 2010/IV – 2011/IV

	Year/Quarter		Year	
	2010/IV	2011/IV	2010	2011
Job vacancies	32 700	33 500	42 000	45 600
Part-time	15 %	15 %	26 %	20 %
Fixed term	37 %	33 %	55 %	44 %
Hard-to-fill vacancies	42 %	45 %	37 %	40 %

Annual figures are averages of the quarterly figures.

In all, 23,900, or 71 per cent, of the job vacancies in the last quarter of 2011 were in private enterprises. Examined by industry, changes from the quarter one year ago were fairly small. Compared to the last quarter of 2010, open job vacancies increased in Uusimaa (1,400) and Northern Finland (1,200).

In the last quarter of 2011, the share of part-time vacancies among all vacancies remained unchanged but the share of fixed-term vacancies decreased by four percentage points from the year before. Forty-five per cent of open job vacancies were hard-to-fill, which is slightly more than in the last quarter of the year before.

Statistics Finland has been collecting data on job vacancies quarterly since the beginning of 2002. The statistics are based on a sample of establishments of enterprises and general government. The data are collected with telephone interviews and web questionnaires. The statistics are decreed by a regulation of the European Union. The objective is to produce up-to-date and comparable information about the number and structure of job openings on the labour markets of EU Member States.

Contents

Tables

Appendix tables

Appendix table 1. Job vacancies by the quarters 2010/IV - 2011/IV.....	3
Appendix table 2. Job vacancies by size of the local kind of activity unit 2010/IV - 2011/IV.....	3
Appendix table 3. Job vacancies by employer sector of the local kind of activity unit 2010/IV - 2011/IV.....	3
Appendix table 4. Job vacancies by province 2010/IV - 2011/IV.....	4
Appendix table 5. Job vacancies by industry 2010/IV - 2011/IV.....	4
Appendix table 6. Part-time vacancies by province 2010/IV - 2011/IV.....	5
Appendix table 7. Part-time vacancies by industry 2010/IV - 2011/IV.....	5
Appendix table 8. Fixed-term vacancies by province 2010/IV - 2011/IV.....	6
Appendix table 9. Fixed-term vacancies by industry 2010/IV - 2011/IV.....	6
Appendix table 10. Hard-to-fill vacancies by province 2010/IV - 2011/IV.....	7
Appendix table 11. Hard-to-fill vacancies by industry 2010/IV - 2011/IV.....	7

Figures

Appendix figures

Appendix figure 1. Job vacancies by the quarters.....	8
Appendix figure 2. Job vacancies by type of employment relationship	8
Appendix figure 3. Job vacancies by employer sector.....	9
Appendix figure 4. Job vacancies by size of the local kind of activity unit.....	9
Appendix figure 5. Job vacancies by province.....	10
Appendix figure 6. Job vacancies by industry.....	10

Appendix tables

Appendix table 1. Job vacancies by the quarters 2010/IV - 2011/IV

	Year/Quarter					Change	Change (%)
	2010/IV	2011/I	2011/II	2011/III	2011/IV	2010/IV - 2011/IV	2010/IV - 2011/IV
Job vacancies							
Total	32 700	59 000	49 800	40 000	33 500	900	3
Unoccupied	17 900	23 800	22 100	21 100	18 000	100	0
Part-time	5 000	12 800	9 600	8 500	5 000	0	0
Fixed term	12 200	31 400	23 200	14 200	11 100	-1 100	-9
Hard to Fill	13 800	21 100	20 000	17 500	15 100	1 400	10

Appendix table 2. Job vacancies by size of the local kind of activity unit 2010/IV - 2011/IV

	Year/Quarter					Change	Change (%)
	2010/IV	2011/I	2011/II	2011/III	2011/IV	2010/IV - 2011/IV	2010/IV - 2011/IV
Employees							
Total	32 700	59 000	49 800	40 000	33 500	900	3
1-4 persons	6 000	8 800	8 900	6 400	6 800	700	12
5-10 persons	7 600	12 700	9 400	8 300	6 600	-1 000	-13
11-99 persons	14 100	26 300	23 300	20 000	15 600	1 500	10
100 or more	4 900	11 200	8 200	5 200	4 600	-300	-6

Appendix table 3. Job vacancies by employer sector of the local kind of activity unit 2010/IV - 2011/IV

	Year/Quarter					Change	Change (%)
	2010/IV	2011/I	2011/II	2011/III	2011/IV	2010/IV - 2011/IV	2010/IV - 2011/IV
Employer							
Employers total	32 700	59 000	49 800	40 000	33 500	900	3
Private enterprise	22 400	41 500	33 300	27 800	23 900	1 500	7
Local Government	6 000	12 200	11 200	8 200	6 000	0	0
Central Government	1 000	1 100	1 000	600	1 000	0	-1
Non-Profit Organization	1 900	2 500	3 100	2 600	2 200	200	11
Other	1 300	1 800	1 200	700	400	-800	-65

Appendix table 4. Job vacancies by province 2010/IV - 2011/IV¹⁾

Corrected on 16 May 2012. The corrections are indicated in red. The figures in the table are not congruent with the classification of major regions but with that of provinces.

	Year/Quarter					Change	Change (%)
	2010/IV	2011/I	2011/II	2011/III	2011/IV	2010/IV - 2011/IV	2010/IV - 2011/IV
Province							
Total	32 700	59 000	49 800	40 000	33 500	900	3
Uusimaa	12 200	20 600	16 300	13 600	13 700	1 400	12
Southern Finland (excl. Uusimaa)	3 200	7 000	6 300	3 700	2 400	-900	-27
Western Finland	10 400	19 800	15 900	13 800	10 100	-300	-2
Eastern Finland	3 900	4 300	3 700	4 100	3 200	-700	-18
Oulu and Lapland	2 900	7 300	7 500	4 700	4 200	1 200	43

1) Was previously by major region.

Appendix table 5. Job vacancies by industry 2010/IV - 2011/IV

	Year/Quarter					Change	Change (%)
	2010/IV	2011/I	2011/II	2011/III	2011/IV	2010/IV - 2011/IV	2010/IV - 2011/IV
Industry (TOL 2008)							
Total	32 700	59 000	49 800	40 000	33 500	900	3
A Agriculture, forestry and fishing (01–03)	1 200	1 300	700	300	500	-700	-57
B-E Manufacturing; Mining and quarrying and other industry (05–39)	3 900	7 100	4 400	4 900	4 200	300	7
F Construction (41–43)	1 900	2 600	3 600	1 800	1 700	-200	-11
G-I Wholesale and retail trade; Transportation and storage; Accommodation and food service (45–56)	7 300	18 900	12 600	9 900	7 400	100	2
J Information and communication (58–63)	2 400	3 400	1 900	1 600	1 900	-500	-22
K,L Financial and insurance activities; Real estate activities (64–68)	1 100	1 100	1 000	800	2 200	1 100	103
M,N Professional, scientific and technical activities; Administrative and support service activities (69–82)	5 400	8 800	9 200	6 900	4 900	-500	-9
O-Q Public administration; Education, Human health and social work activities (84–88)	7 800	11 400	14 700	11 600	8 400	600	8
R-S Other service activities (90–96)	1 700	4 400	1 800	2 200	2 300	700	42

Appendix table 6. Part-time vacancies by province 2010/IV - 2011/IV¹⁾

Corrected on 16 May 2012. The corrections are indicated in red. The figures in the table are not congruent with the classification of major regions but with that of provinces.

	Year/Quarter					Change	Change (%)
	2010/IV	2011/I	2011/II	2011/III	2011/IV	2010/IV - 2011/IV	2010/IV - 2011/IV
Province							
Total	5 000	12 800	9 600	8 500	5 000	0	0
Uusimaa	1 500	4 800	1 900	3 600	2 100	600	42
Southern Finland (excl. Uusimaa)	600	800	1 200	800	200	-300	-59
Western Finland	1 800	4 000	4 000	2 600	1 000	-900	-48
Eastern Finland	600	1 900	1 000	600	600	0	0
Oulu and Lapland	500	1 300	1 400	900	1 100	600	122

1) Was previously by major region.

Appendix table 7. Part-time vacancies by industry 2010/IV - 2011/IV

	Year/Quarter					Change	Change (%)
	2010/IV	2011/I	2011/II	2011/III	2011/IV	2010/IV - 2011/IV	2010/IV - 2011/IV
Industry (TOL 2008)							
Total	5 000	12 800	9 600	8 500	5 000	0	0
A Agriculture, forestry and fishing (01–03)	200	100	100	0	0	-200	-100
B-E Manufacturing; Mining and quarrying and other industry (05–39)	500	200	400	1 100	400	-100	-26
F Construction (41–43)	100	0	0	0	0	-100	-100
G-I Wholesale and retail trade; Transportation and storage; Accommodation and food service (45–56)	1 800	5 800	4 100	2 600	2 600	800	47
J Information and communication (58–63)	100	500	0	200	0	-100	-100
K,L Financial and insurance activities; Real estate activities (64–68)	0	100	100	0	100	0	.
M,N Professional, scientific and technical activities; Administrative and support service activities (69–82)	1 600	1 100	2 000	2 200	1 100	-500	-29
O-Q Public administration; Education, Human health and social work activities (84–88)	700	1 600	2 200	2 000	600	0	-5
R-S Other service activities (90–96)	200	3 400	600	400	200	100	28

Appendix table 8. Fixed-term vacancies by province 2010/IV - 2011/IV¹⁾

Corrected on 16 May 2012. The corrections are indicated in red. The figures in the table are not congruent with the classification of major regions but with that of provinces.

	Year/Quarter					Change	Change (%)
	2010/IV	2011/I	2011/II	2011/III	2011/IV	2010/IV - 2011/IV	2010/IV - 2011/IV
Province							
Total	12 200	31 400	23 200	14 200	11 100	-1 100	-9
Uusimaa	3 700	8 900	6 100	4 100	2 900	-700	-20
Southern Finland (excl. Uusimaa)	1 300	4 500	3 000	900	600	-700	-55
Western Finland	4 300	10 600	7 800	4 700	4 400	100	2
Eastern Finland	1 400	2 700	2 500	2 100	1 700	300	21
Oulu and Lapland	1 600	4 700	3 700	2 400	1 500	-100	-4

1) Was previously by major region.

Appendix table 9. Fixed-term vacancies by industry 2010/IV - 2011/IV

	Year/Quarter					Change	Change (%)
	2010/IV	2011/I	2011/II	2011/III	2011/IV	2010/IV - 2011/IV	2010/IV - 2011/IV
Industry (TOL 2008)							
Total	12 200	31 400	23 200	14 200	11 100	-1 100	-9
A Agriculture, forestry and fishing (01–03)	500	900	600	300	400	-200	-31
B-E Manufacturing; Mining and quarrying and other industry (05–39)	900	4 800	1 500	1 400	1 400	500	54
F Construction (41–43)	300	1 000	1 300	700	100	-100	-49
G-I Wholesale and retail trade; Transportation and storage; Accommodation and food service (45–56)	2 500	10 500	5 000	2 300	2 800	300	11
J Information and communication (58–63)	600	800	400	400	100	-500	-86
K,L Financial and insurance activities; Real estate activities (64–68)	500	400	200	200	800	300	60
M,N Professional, scientific and technical activities; Administrative and support service activities (69–82)	1 800	3 800	4 500	2 600	300	-1 400	-80
O-Q Public administration; Education, Human health and social work activities (84–88)	4 300	5 300	8 100	4 900	4 200	-100	-2
R-S Other service activities (90–96)	800	3 800	1 600	1 300	900	100	19

Appendix table 10. Hard-to-fill vacancies by province 2010/IV - 2011/IV¹⁾

Corrected on 16 May 2012. The corrections are indicated in red. The figures in the table are not congruent with the classification of major regions but with that of provinces.

	Year/Quarter					Change	Change (%)
	2010/IV	2011/I	2011/II	2011/III	2011/IV	2010/IV - 2011/IV	2010/IV - 2011/IV
Province							
Total	13 800	21 100	20 000	17 500	15 100	1 400	10
Uusimaa	6 500	8 200	6 400	6 700	5 800	-800	-12
Southern Finland (excl. Uusimaa)	1 000	2 300	2 700	1 200	1 200	300	29
Western Finland	3 500	6 900	6 300	5 400	4 800	1 300	39
Eastern Finland	1 700	1 200	1 500	2 200	1 300	-400	-25
Oulu and Lapland	1 100	2 500	3 100	2 000	2 100	1 000	88

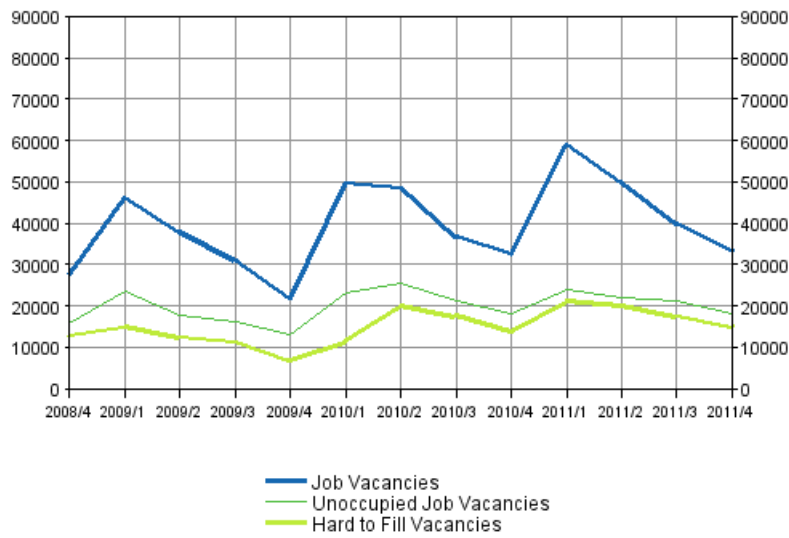
1) Was previously by major region.

Appendix table 11. Hard-to-fill vacancies by industry 2010/IV - 2011/IV

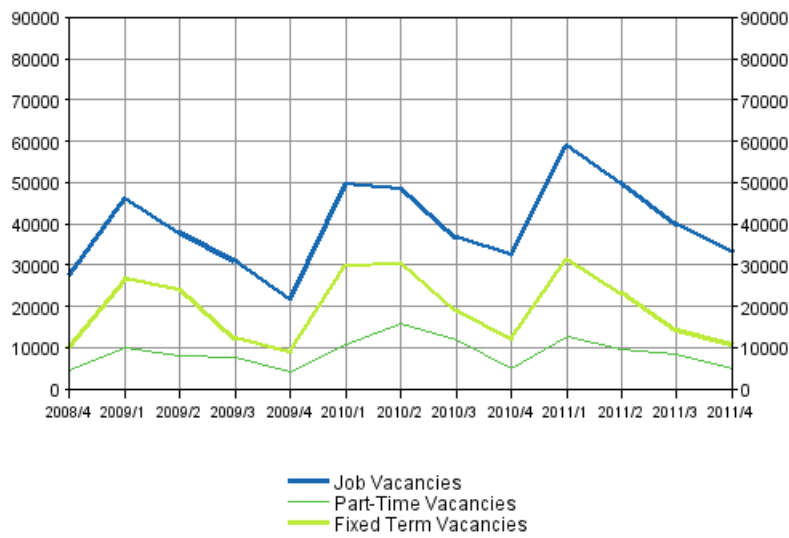
	Year/Quarter					Change	Change (%)
	2010/IV	2011/I	2011/II	2011/III	2011/IV	2010/IV - 2011/IV	2010/IV - 2011/IV
Industry (TOL 2008)							
Total	13 800	21 100	20 000	17 500	15 100	1 400	10
A Agriculture, forestry and fishing (01–03)	700	500	400	0	400	-300	-46
B-E Manufacturing; Mining and quarrying and other industry (05–39)	1 400	2 000	1 800	700	1 800	400	27
F Construction (41–43)	1 100	1 300	1 700	1 100	1 100	-100	-8
G-I Wholesale and retail trade; Transportation and storage; Accommodation and food service (45–56)	3 000	7 200	5 800	4 500	2 700	-200	-8
J Information and communication (58–63)	1 700	1 500	800	500	1 200	-500	-32
K,L Financial and insurance activities; Real estate activities (64–68)	200	100	500	400	700	500	.
M,N Professional, scientific and technical activities; Administrative and support service activities (69–82)	2 800	3 100	3 000	4 100	2 700	-200	-5
O-Q Public administration; Education, Human health and social work activities (84–88)	2 500	4 100	5 300	5 100	3 800	1 300	52
R-S Other service activities (90–96)	400	1 400	800	1 100	800	500	127

Appendix figures

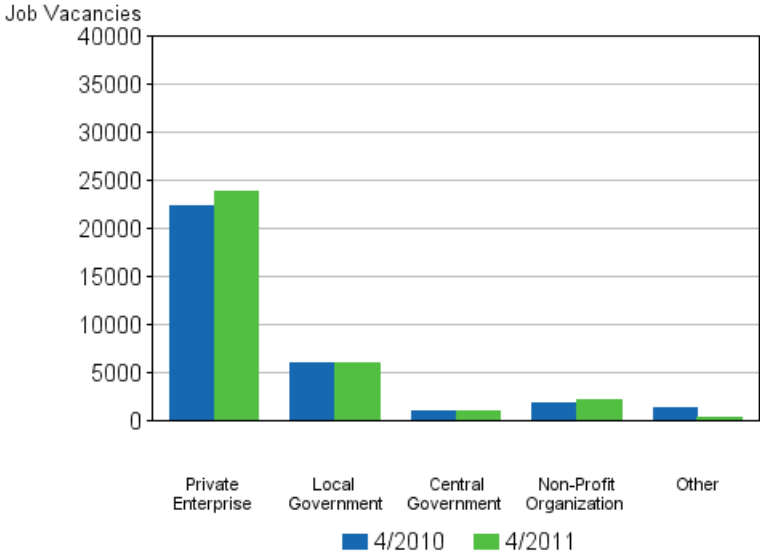
Appendix figure 1. Job vacancies by the quarters



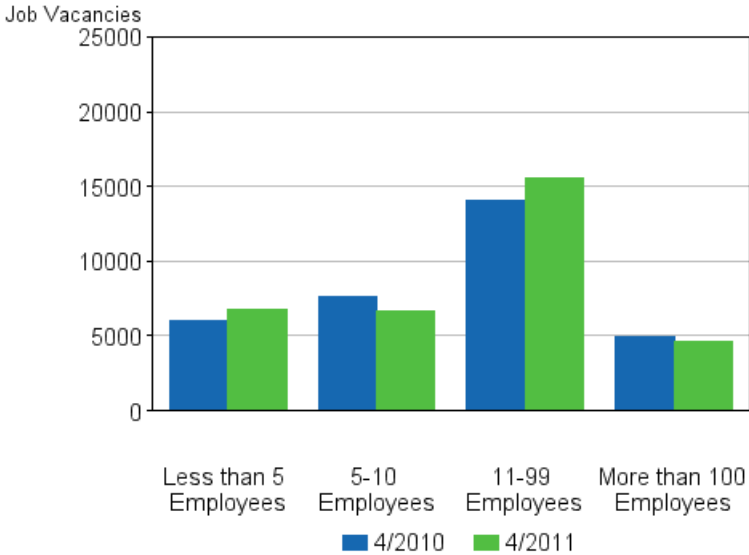
Appendix figure 2. Job vacancies by type of employment relationship



Appendix figure 3. Job vacancies by employer sector



Appendix figure 4. Job vacancies by size of the local kind of activity unit



Appendix figure 5. Job vacancies by province

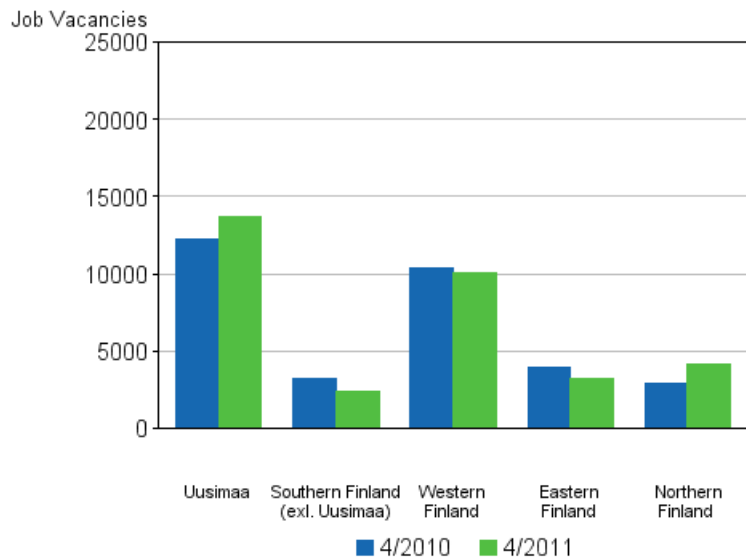
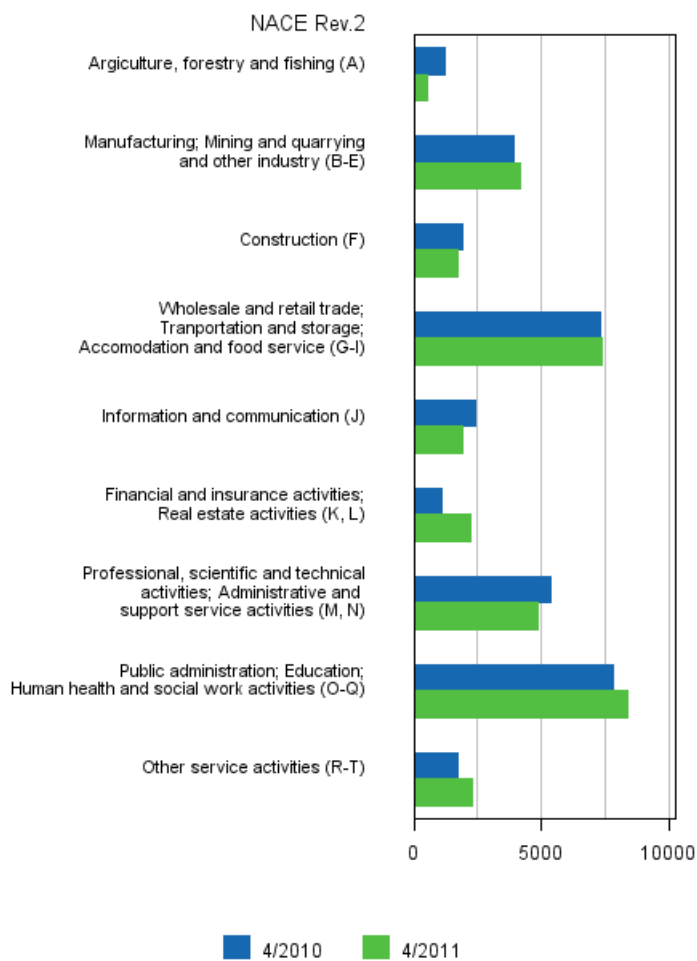


Table heading corrected on 16 May 2012, was previously by major region. Northern Finland = Oulu and Lapland.

Appendix figure 6. Job vacancies by industry



Suomen virallinen tilasto
Finlands officiella statistik
Official Statistics of Finland

Labour Market 2012

Inquiries

Antti Halmetoja 09 1734 3763

Director in charge:

Riitta Harala

tyovoimatutkimus@stat.fi

www.stat.fi

Source: Job vacancy survey 2011, 4th quarter 2010. Statistics Finland.