

Energy supply and consumption

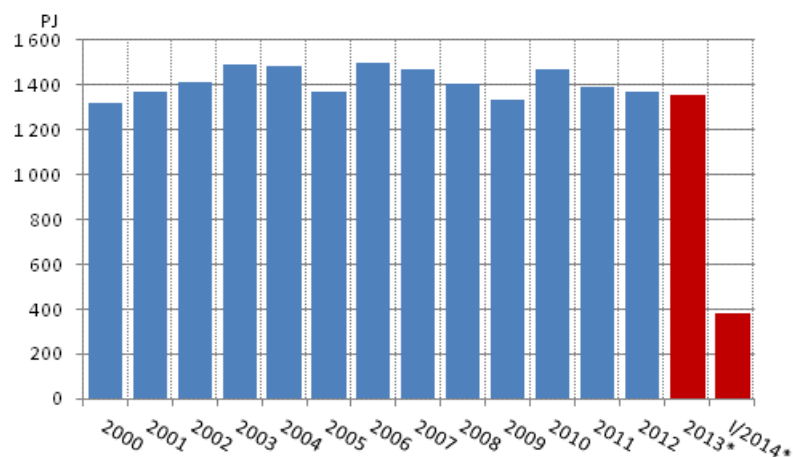
2014, 1st quarter

Correction on 27 June 2014. Warm early part of the year decreased energy consumption

Correction. The calculation errors in preliminary data for the 1st quarter of 2014 have been corrected on 27 June 2014. The corrections are indicated in red.

According to Statistics Finland's preliminary data, the warm early part of the year decreased total energy consumption. It was around 380 petajoule (PJ) in the first quarter of the year, which was nearly five per cent less than in 2013. Electricity consumption amounted to 23.9 terawatt hours (TWh), which is 2.8 per cent lower than in last year's corresponding period. Imports of electricity from the Nordic countries grew 2.5-fold as a result of good availability of hydro power. For this reason, domestic separate production of electricity went down by 46 per cent, which turned the consumption of coal to a decline. Carbon dioxide emissions in energy production fell by 7.5 per cent from the corresponding period last year.

Total energy consumption



*preliminary

Among individual energy sources, the largest reduction of 24 per cent was seen in the consumption of coal (13 PJ), while the second largest reduction of 16 per cent was recorded in the consumption of natural gas (5.9 PJ). The consumption of oil also diminished by 7 per cent (5.7 PJ). In turn, the consumption of

peat grew by 22 per cent in the first quarter of the year (4.3 PJ). This was due to the exceptionally low use of peat last year over the corresponding period. One-quarter of Finland's total energy consumption was covered with wood fuels.

Domestic production of electricity decreased by eight per cent. Twenty per cent of the electricity consumed in Finland was covered with imported electricity. Net imports of electricity increased by 28 per cent in the first quarter. The volume of electricity imported from Sweden grew 2.5-fold. Imports of electricity from Russia in turn fell by 54 per cent. Exports of electricity to Estonia rose to a new level, 1.2 TWh, which was triple the amount in the corresponding period of the previous year. Combined heat and power production went down by seven per cent as the demand for district heat decreased on account of the warm early part of the year. The production of wind power grew by 78 per cent.

Diverse energy products were imported into Finland to the value of EUR three billion in the first quarter of 2014, which was 18 per cent less than one year earlier. Most energy products were imported from Russia. Correspondingly, energy products were exported from Finland to the value of EUR 1.4 billion, which was 22 per cent less than one year previously. Most energy products were exported from Finland to OECD countries. The fall was due to lower imports of crude oil and medium distillates and decreased exports of petrol. In March, stocks of coal amounted to some 18 TWh, which was 9 per cent less than one year earlier. At the end of April, stocks of fuel peat were estimated to be around 8.8 TWh.

Total energy consumption by source (TJ) and CO2 emissions (Mt)

| Corrected on 27 June 2014. The corrections are indicated in red. | | | |
|--|----------------|------------------|---|
| Energy source ⁴⁾ | I/2014* | Annual change-%* | Percentage share of total energy consumption* |
| Oil | 72 865 | -7 | 19 |
| Coal ¹⁾ | 40 395 | -24 | 11 |
| Natural gas | 32 211 | -16 | 8 |
| Nuclear Energy ²⁾ | 65 198 | 0 | 17 |
| Net Imports of Electricity ³⁾ | 16 853 | 28 | 4 |
| Hydro and Wind Power ³⁾ | 15 180 | 5 | 4 |
| Peat | 24 019 | 22 | 6 |
| Wood fuels | 98 397 | -2 | 26 |
| Others | 14 330 | -11 | 4 |
| TOTAL ENERGY CONSUMPTION | 379 448 | -5 | 100 |
| Bunkers | 7 489 | -32 | . |
| CO2 emissions from energy sector | 13 | -7 | . |

1) Coal: includes hard coal, coke, blast furnace gas and coke oven gas.

2) Conversion of electricity generation into fuel units: Nuclear power: 10.91 TJ/GWh (33% total efficiency)

3) Conversion of electricity generation into fuel units: Hydro power, wind power and net imports of electricity: 3.6 TJ/GWh (100%)

4) *Preliminary

Contents

Figures

Appendix figures

Appendix figure 1. Changes in GDP, Final energy consumption and electricity consumption.....4

Appendix figure 2. Carbon dioxide emissions from fossil fuels and peat use4

Appendix figure 3. Coal consumption5

Appendix figure 4. Consumption of natural gas5

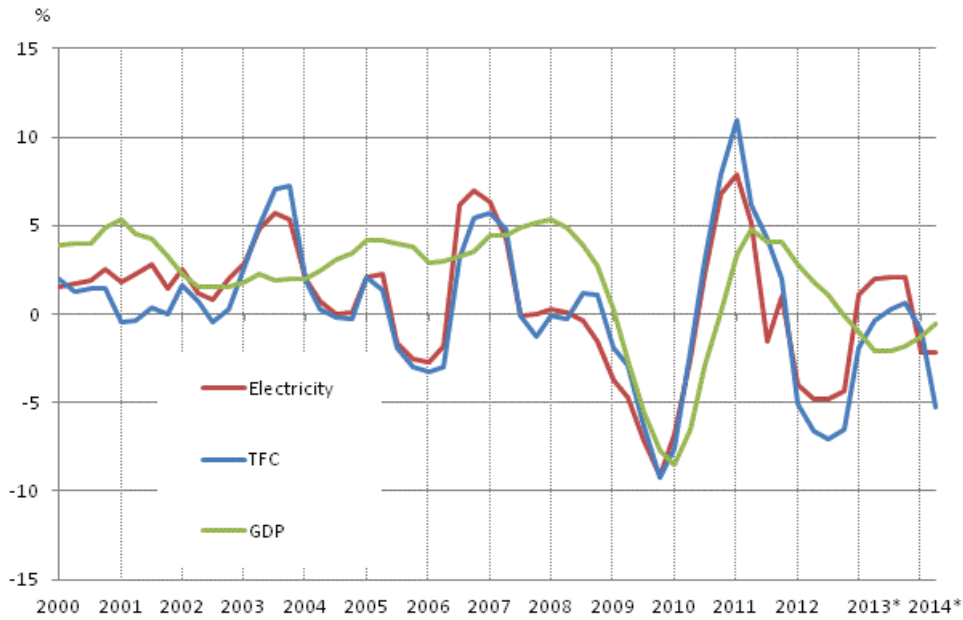
Appendix figure 5. Peat consumption. Corrected on 27 June 2014.....6

Appendix figure 6. Domestic oil deliveries.....6

Revisions in these statistics.....7

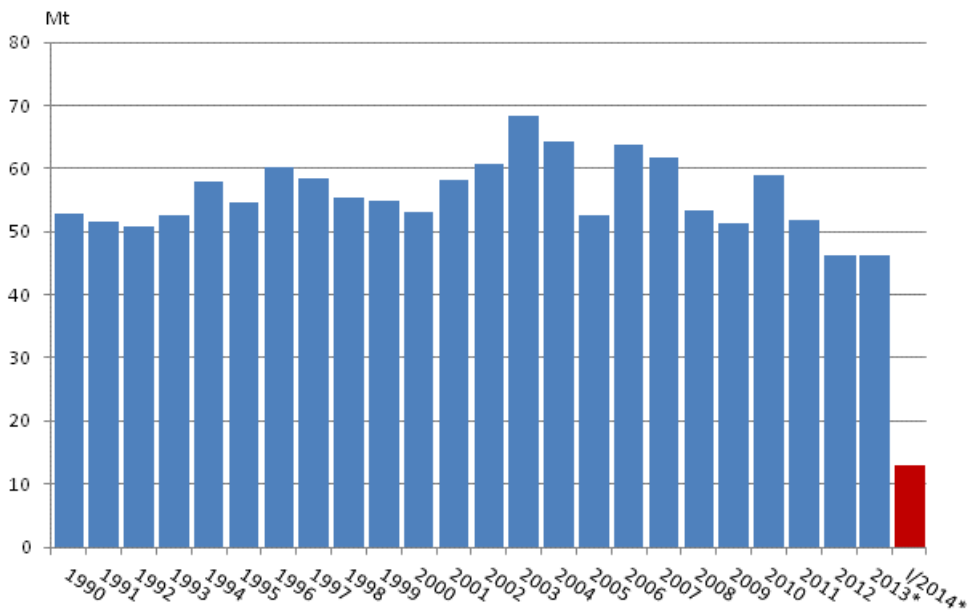
Appendix figures

Appendix figure 1. Changes in GDP, Final energy consumption and electricity consumption



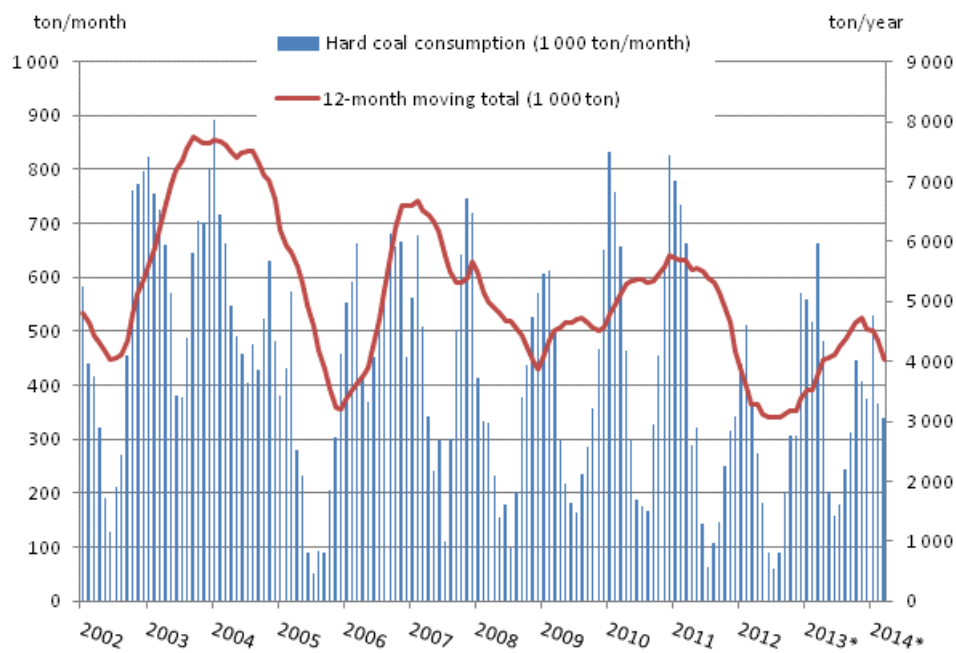
*preliminary, 12-month moving total

Appendix figure 2. Carbon dioxide emissions from fossil fuels and peat use



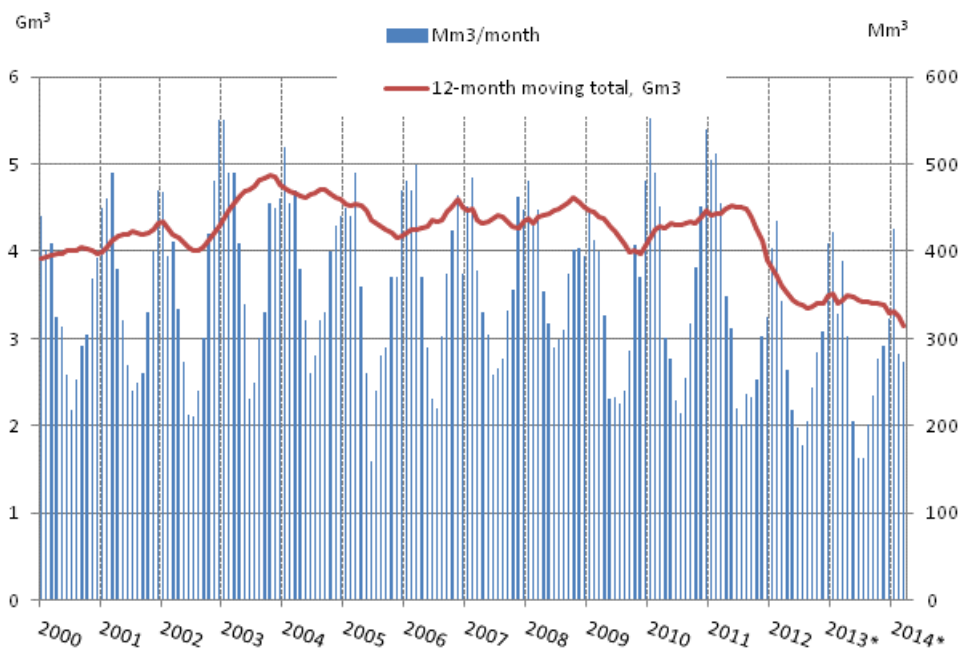
*preliminary

Appendix figure 3. Coal consumption



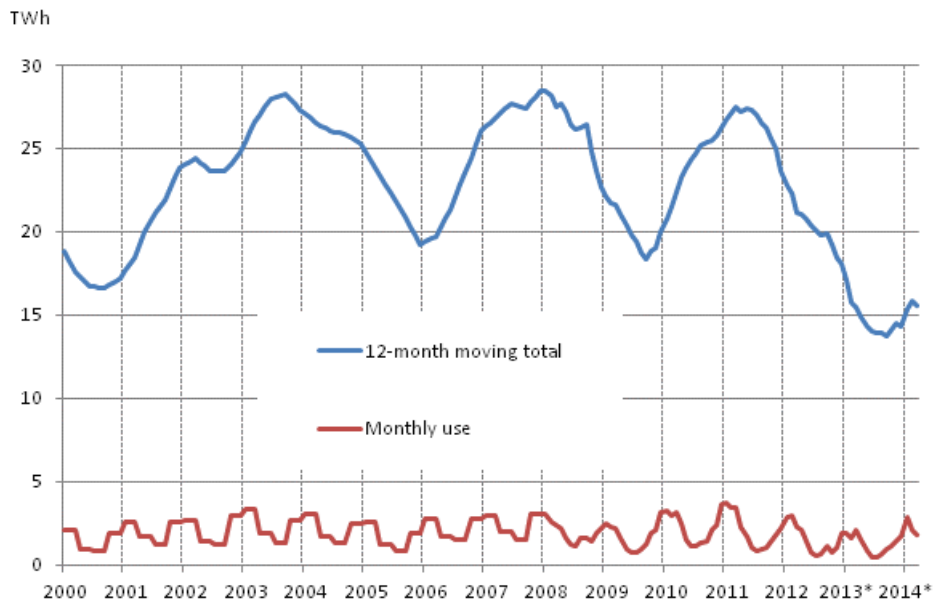
*preliminary

Appendix figure 4. Consumption of natural gas



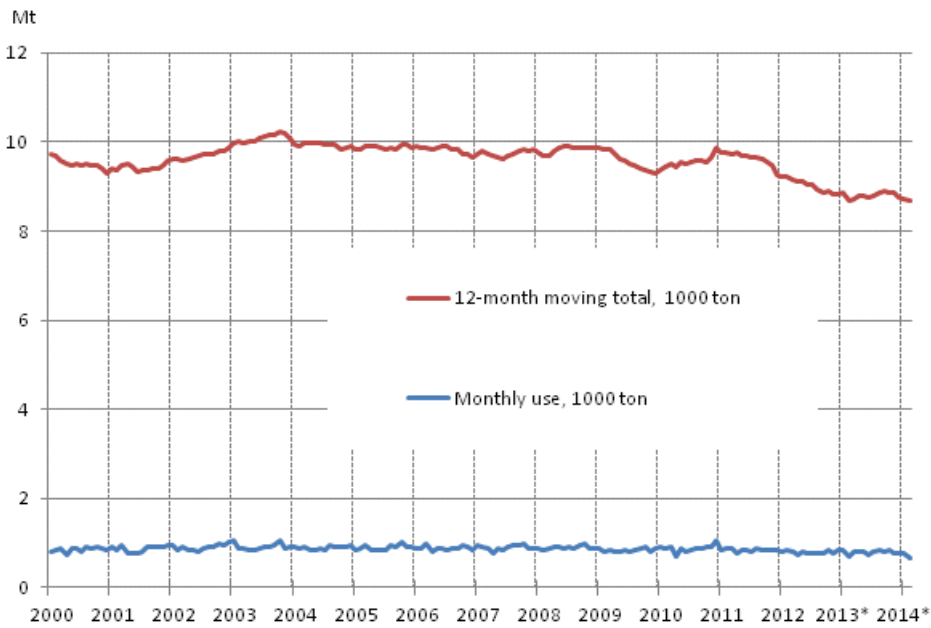
Source: Gasum, * preliminary

Appendix figure 5. Peat consumption. Corrected on 27 June 2014.



Source: The Bioenergy Association of Finland/Association of Finnish Peat Industries, *preliminary

Appendix figure 6. Domestic oil deliveries



Source: Finnish Petroleum Federation, *preliminary

Revisions in these statistics

The data of the statistics have become revised according to the table below. For more information about data revisions, see Section 3 of the quality description (only in Finnish).

Revisions to data on annual changes in total energy consumption¹⁾

| Total energy consumption and quarter | | Annual change (%) | | Revision (%-point) |
|--------------------------------------|-----------|-------------------|------------------------------|--------------------|
| | | 1st release | Latest release 19.6.2014 (%) | |
| Total energy consumption | I-IV/2013 | -2 | -1 | 1 |
| | I/2013 | -1 | -1 | 0 |
| | II/2013 | 2 | 1 | -1 |
| | III/2013 | 0 | 0 | 0 |
| | IV/2013 | -5 | -4 | 1 |

1) The revisions describe the difference between the annual change percentages of the latest and first releases in percentages. The first release refers to the time when preliminary data for the statistical reference quarter in question were released for the first time.

Inquiries

Ville Maljanen 029 551 2691

Director in charge:

Leena Storgårds

energia@stat.fi

www.stat.fi

Source: Statistics Finland, Energy supply and consumption