

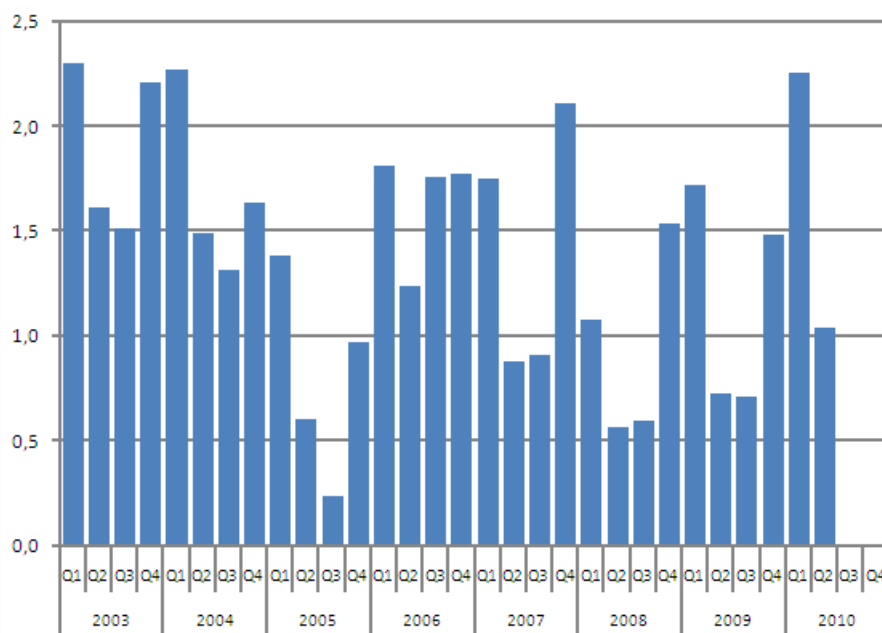
Consumption of hard coal

2010, 2nd quarter

Consumption of hard coal increased by 34 per cent in the first half of the year

A total of 3.3 million tonnes (83,000 TJ) of hard coal were consumed as fuel in the generation of electricity and heat in the January to June period of 2010. The consumption increased by 34 per cent from the previous year. Use of hard coal went up especially in separate production of electricity. The cold winter and diminished production of hydro power increased the consumption.

Consumption of Hard Coal, million tonnes



In the first half of the year, the consumption of hard coal was a quarter up on the average for the 2000s. The cold winter and growth in industrial output increased the consumption of electricity. In the early part of the year the consumption of electricity showed a growth of eight per cent. At the same time the water situation in the Nordic countries was weaker than in the previous year. In Finland the production of hydro power fell by eight per cent from the previous year.

Contents

Tables

Appendix tables

Appendix table 1. Consumption of Hard Coal, 1000 tonnes.....	3
Appendix table 2. Hard Coal Stocks, month-end, million tonnes.....	3

Appendix tables

Appendix table 1. Consumption of Hard Coal, 1000 tonnes

Month	Year										
	2000	2001	2002	2003	2004	2005	2006	2007	2008	2009	2010
January	610	490	580	820	890	380	550	560	410	610	830
February	450	600	440	750	720	430	590	680	330	610	750
March	390	640	420	730	660	570	660	510	330	500	670
April	250	430	320	660	550	280	420	340	230	310	490
May	290	340	190	570	490	230	370	240	160	230	320
June	100	260	130	380	460	90	450	300	180	190	240
July	80	190	210	380	410	50	500	110	20	180	-
August	220	210	270	490	480	90	580	300	200	240	-
September	270	230	450	650	430	90	680	500	380	300	-
October	380	330	760	700	530	210	660	640	440	360	-
November	400	420	770	700	630	300	660	750	530	470	-
December	470	570	800	800	480	460	450	720	570	650	-
1st-2nd Quarter	2 090	2 770	2 090	3 920	3 770	1 990	3 050	2 630	1 650	2 450	3 300
Whole year	3 910	4 710	5 360	7 640	6 720	3 200	6 590	5 660	3 780	4 650	-

Appendix table 2. Hard Coal Stocks, month-end, million tonnes

Month	Year				
	2006	2007	2008	2009	2010
January	5,0	4,4	3,6	4,2	4,3
February	4,6	4,1	3,6	4,1	3,8
March	4,1	4,2	3,7	4,0	3,4
April	3,9	4,4	3,7	4,2	3,2
May	3,8	4,8	3,9	4,5	3,5
June	3,7	4,8	4,0	4,9	3,7
July	3,4	4,9	4,1	5,2	-
August	3,2	5,0	4,3	5,5	-
September	3,3	4,7	4,1	5,5	-
October	3,5	4,5	3,9	5,4	-
November	3,8	4,1	4,1	5,2	-
December	4,4	3,7	4,4	4,8	-

Suomen virallinen tilasto
Finlands officiella statistik
Official Statistics of Finland

Energy 2010

Inquiries

Anssi Vuorio (09) 1734 2685
Director in charge:
Leena Storgårds
energia@stat.fi
www.stat.fi