

# Statistics on local government productivity 2006

## Local government productivity fell slightly in 2006

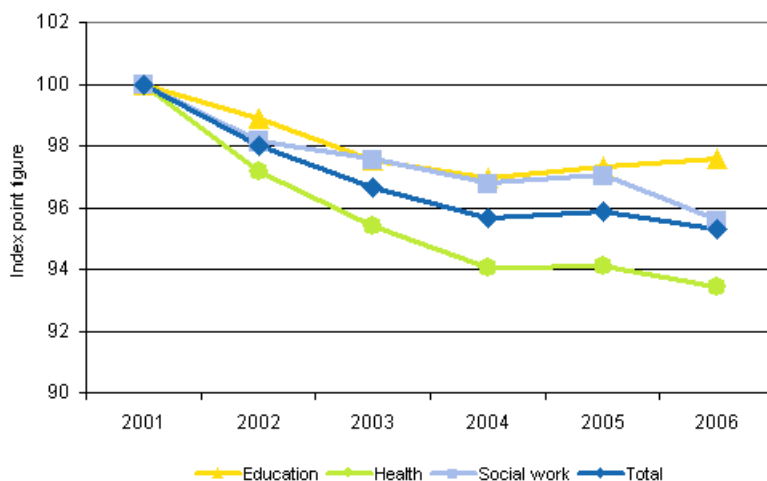
According to revised data in Statistics Finland statistics on local government productivity, the combined total productivity of education, health and social work of local government fell by 0.6 per cent in 2006. This decline was due to stronger growth in total input volume than in output volume. The volume of total input grew by 1.0 per cent, while the volume of output grew by 0.4 per cent.

### Volume changes in the output and total input and changes in total productivity of local government by industry in 2006, per cent from the year before

2006	Education	Health	Social work	Total
Output	-0.4	0.7	0.8	<b>0.4</b>
Total input	-0.6	1.4	2.3	<b>1.0</b>
Total productivity	0.3	-0.7	-1.5	<b>-0.6</b>

The total productivity of health and social work fell, but total productivity of education increased slightly during 2006. Total productivity of health declined by just under one per cent due to the 1.5 per cent growth on total input as output increased by under one per cent. The output and total input of education both fell by roughly one-half of a per cent, which meant that total productivity remained nearly unchanged. The total productivity of social work fell by 1.5 per cent as total input grew by over 2 per cent and output by under one per cent.

### Development in the total productivity of education, health and social work of local government in 2001-2006 (2001=100)



From 2001 to 2006 local government total productivity has declined by a total of slightly under 5 per cent. At the same time the total productivity of education has fallen by a good 2 per cent as it has risen slightly in the past two years. The slight rise in health and social work observed in 2005 has, for the time being, remained temporary. In 2001-2006 the total productivity of social work has declined by slightly over 4 per cent and that of health by just under 7 per cent.

The statistics are based on the national accounts data. The statistics are compiled at the level of the whole country and the data are not available by municipality or joint municipal board.

# Contents

## Appendix tables

Volume changes in the output and total input and changes in total productivity of local government by industry in 2001-2006, per cent from the year before.....	4
---	---

## Appendix tables

**Volume changes in the output and total input and changes in total productivity of local government by industry in 2001-2006, per cent from the year before**

		2001	2002	2003	2004	2005	2006
<b>Education</b>	Output	0.3	0.7	0.1	0.0	2.2	-0.4
	Total input	1.6	1.8	1.5	0.5	1.8	-0.6
	Total productivity	-1.3	-1.1	-1.4	-0.6	0.4	0.3
<b>Health</b>	Output	0.4	0.7	1.1	4.0	4.4	0.7
	Total input	3.7	3.6	2.9	5.5	4.3	1.4
	Total productivity	-3.2	-2.8	-1.8	-1.4	0.1	-0.7
<b>Social work</b>	Output	-1.7	1.0	0.2	0.1	1.8	0.8
	Total input	3.9	3.0	0.7	0.9	1.5	2.3
	Total productivity	-5.3	-1.9	-0.5	-0.8	0.3	-1.5
<b>Total</b>	Output	-0.2	0.8	0.5	1.7	3.0	0.4
	Total input	3.1	2.9	1.9	2.7	2.8	1.0
	Total productivity	-3.1	-2.0	-1.4	-1.0	0.2	-0.6

---

Suomen virallinen tilasto  
Finlands officiella statistik  
Official Statistics of Finland

2008

*Inquiries*

Sami Hautakangas (09) 1734 3540  
Director in charge:  
Ari Tyrkkö

[julkinen.tuottavuus@stat.fi](mailto:julkinen.tuottavuus@stat.fi)

[http://www.stat.fi/til/kktu/index\\_en.html](http://www.stat.fi/til/kktu/index_en.html)