

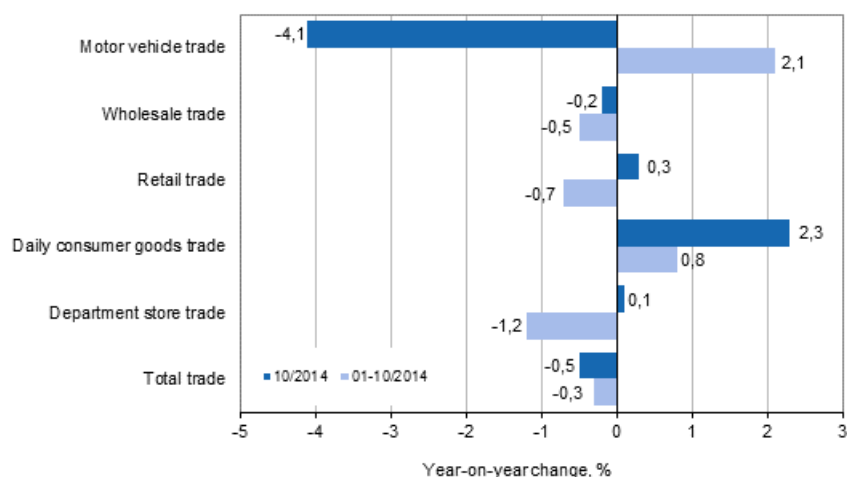
# Turnover of trade

2014, October

## Sales in total trade fell by 0.5 per cent year-on-year in October

According to Statistics Finland, retail trade sales grew by 0.3 per cent in October from October 2013. Sales in daily consumer goods trade grew by 2.3 per cent and sales in department store trade by 0.1 per cent from one year ago. By contrast, wholesale trade sales went down by 0.2 per cent and motor vehicle sales by 4.1 per cent from one year previously. All in all, sales in total trade were down by 0.5 per cent on October 2013.

### Annual change in turnover in trade industries, % (TOL 2008)



Source: Statistics Finland

In October, **the sales volume** in retail trade remained on level with October 2013. By contrast, the sales volume in wholesale trade increased by 0.6 per cent from one year before. The sales volume in motor vehicle trade went down by 4.0 per cent from last year's October. Thus, sales decreased in total trade by 0.2 per cent in October from the corresponding period of the previous year. The volume index of sales is calculated by removing the effect of price changes from the value index series.

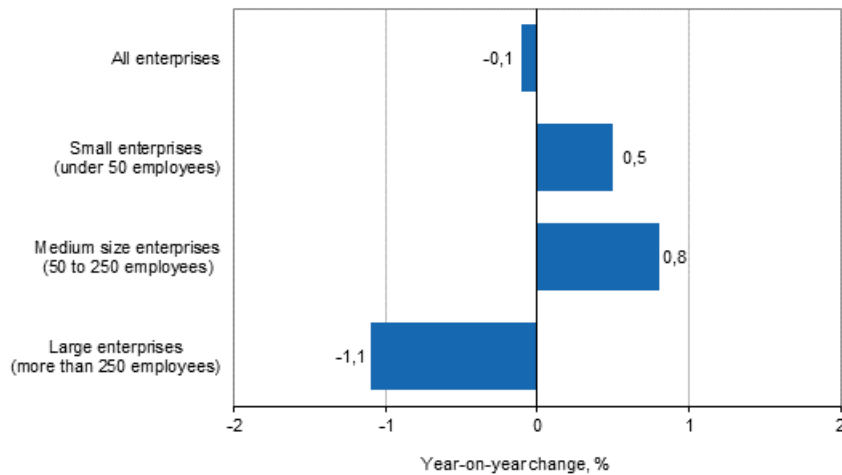
## *Total trade sales fell by 0.3 per cent in January to October year-on-year*

In the January to October period, sales in retail trade contracted by 0.7 per cent and in wholesale trade by 0.5 per cent compared with the corresponding period of the previous year. By contrast, motor vehicle sales grew by 2.1 per cent from January to October 2013. Total trade sales went down by 0.3 per cent over the corresponding period.

## *Weak development in trade on account of large enterprises*

Sales in small and medium size enterprises in trade grew in the third quarter of 2014. Sales in small enterprises increased by 0.5 per cent and in medium size enterprises by 0.8 per cent from one year before. Against this, sales in large enterprises went down by 1.1 per cent, which pushed total trade sales down by 0.1 per cent from July to September 2013.

### **Annual change in turnover of trade in the third quarter by enterprise size category, %**



# Contents

## Tables

### Appendix tables

Appendix table 1. Year-on-year change in turnover in trade industries, % (TOL 2008).....4

## Figures

### Appendix figures

Appendix figure 1. Turnover of motor vehicles, wholesale and retail trade, trend series (TOL 2008).....5

Revisions in these statistics.....6

## Appendix tables

**Appendix table 1. Year-on-year change in turnover in trade industries, % (TOL 2008)**

	Year-on-year change by quarter, % <sup>1)</sup>				Cumulative year-on-year change, % <sup>1)</sup>	Year-on-year change in the latest month, % <sup>1)</sup>
	10-12/2013	01-03/2014	04-06/2014	07-09/2014		
Total trade (G)	-1,2	-0,3	-0,3	-0,1	-0,3	-0,5
Motor vehicle trade (45)	1,8	8,8	-0,3	0,6	2,1	-4,1
Wholesale trade (46)	-1,9	-2,0	-0,1	0,4	-0,5	-0,2
Retail trade (47)	-0,8	-0,7	-0,6	-1,0	-0,7	0,3
Daily consumer goods trade (4711, 472) <sup>2)</sup>	1,3	-0,4	1,3	1,0	0,8	2,3
Department store trade (4719) <sup>3)</sup>	-0,5	0,2	-2,3	-1,7	-1,2	0,1

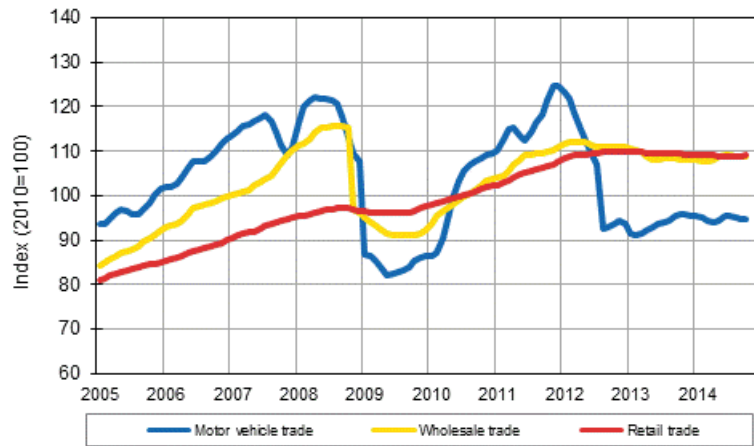
1) Year-on-year change compares the value for an examined time period to the value for the corresponding time period twelve months back.

2) According to the Business Register, the share of daily consumer goods (4711, 472) of turnover in retail trade was 47.6 per cent in 2012.

3) According to the Business Register, the share of retail sale in department stores (4719) of turnover in retail trade was 11.8 per cent in 2012.

## Appendix figures

**Appendix figure 1. Turnover of motor vehicles, wholesale and retail trade, trend series (TOL 2008)**



Source: Statistics Finland

## Revisions in these statistics

The data of the statistics have become revised according to the table below. For more information about data revisions, see Section 3 of the quality description (only in Finnish).

### Revision of annual changes in turnover in main industries<sup>1)</sup>

Industry / Reference period		Year-on-year change,%		Revision, percentage point
		1st release	Latest release (2014-12-15)	
G Wholesale and retail trade	05/2014	-2,5	-3,5	-1,0
	06/2014	3,3	3,3	0,0
	07/2014	0,2	-0,2	-0,4
	08/2014	-2,4	-2,7	-0,3
	09/2014	1,5	2,8	1,3
45 Wholesale and retail trade and repair of motor vehicles and motorcycles	05/2014	-2,1	-3,6	-1,5
	06/2014	10,0	7,1	-2,9
	07/2014	-0,9	-0,5	0,4
	08/2014	-0,3	-0,2	0,1
	09/2014	0,6	2,5	1,9
46 Wholesale trade, except of motor vehicles and motorcycles	05/2014	-3,5	-3,9	-0,4
	06/2014	4,5	5,3	0,8
	07/2014	1,0	0,2	-0,8
	08/2014	-3,2	-3,3	-0,1
	09/2014	2,5	4,2	1,7
47 Retail trade, except of motor vehicles and motorcycles	05/2014	-1,0	-2,6	-1,6
	06/2014	-1,6	-1,2	0,4
	07/2014	-0,6	-0,7	-0,1
	08/2014	-1,7	-2,6	-0,9
	09/2014	0,0	0,3	0,3
Retail sale in non-specialised stores (4711, 472)	05/2014	0,6	-0,4	-1,0
	06/2014	-1,6	-2,1	-0,5
	07/2014	1,4	2,4	1,0
	08/2014	-0,2	-0,7	-0,5
	09/2014	1,4	1,4	0,0
Department store trade (4719)	05/2014	-2,0	-2,5	-0,5
	06/2014	-3,8	-3,6	0,2
	07/2014	-1,6	-1,0	0,6
	08/2014	-1,4	-1,3	0,1
	09/2014	-2,5	-2,9	-0,4

1) The 1st release refers to the time when data for the reference period were released for the first time. The revision describes the difference of annual change percentages between the first and latest release.

### Revision of long-term annual changes in turnover in main industries

Industry	Year	Average <sup>1)</sup>	Average for absolute values <sup>2)</sup>
Total trade (G)	2011	-0,8	1,1
	2012	-0,7	0,9
	2013	-0,2	0,5
Motor vehicle trade (45)	2011	-2,6	2,6
	2012	0,6	2,3
	2013	-0,5	0,9

Industry	Year	Average <sup>1)</sup>	Average for absolute values <sup>2)</sup>
Wholesale trade (46)	2011	-0,5	1,2
	2012	-0,8	1,1
	2013	-0,1	0,7
Retail trade (47)	2011	-1,1	1,1
	2012	-0,7	0,9
	2013	-0,5	0,8
Daily consumer goods trade (4711, 472)	2011	-0,7	0,7
	2012	-0,5	0,7
	2013	0,1	0,5
Department store trade (4719)	2011	-0,1	0,4
	2012	0,1	0,4
	2013	-0,1	0,4

1) Average for data revised between the first and seventh release in the statistical reference year.

2) Average for absolute values of differences between the first and seventh release.

### Inquiries

Jarkko Niemistö 029 551 2951

Milka Suomalainen 029 551 2912

Director in charge:

Hannele Orjala

palvelut.suhdanne@stat.fi

www.stat.fi

Source: Turnover of trade, Statistics Finland