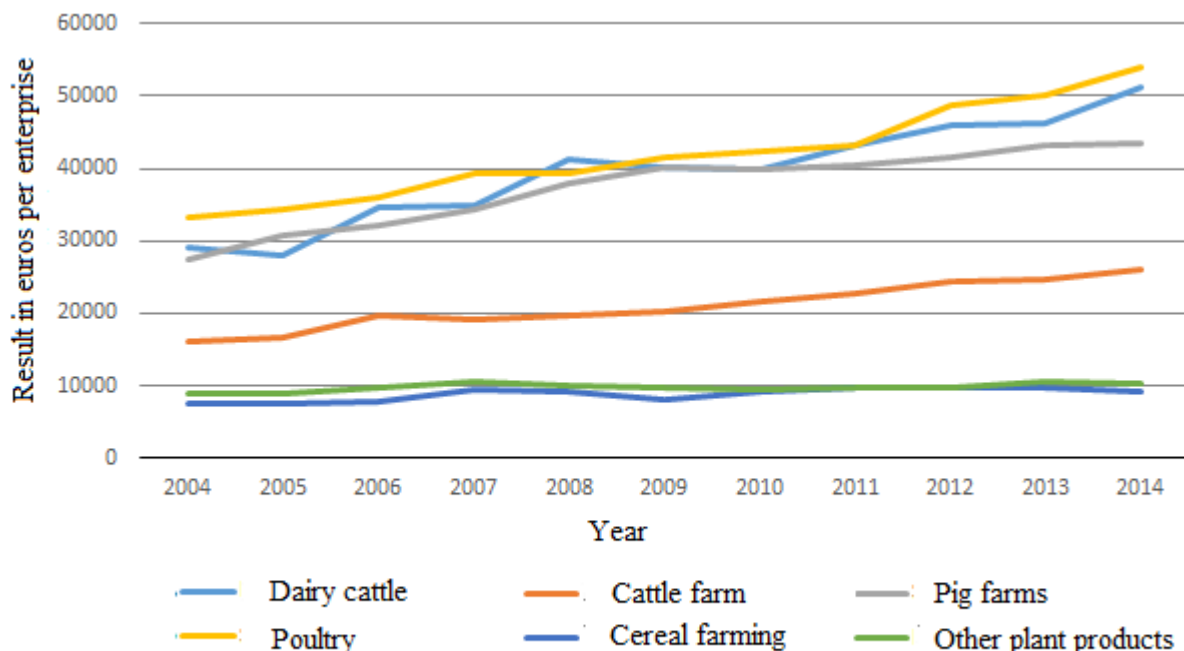


Statistics on the finances of agricultural and forestry enterprises 2014

Result from agriculture varies by production sector

There is considerable variation in the result development in agriculture when comparing farms of different production sectors. Farms, whose main production sector is animal husbandry, have increased their result clearly more than farms focusing on plant production. The result from agriculture in 2014 was, on average, EUR 18,900 per enterprise when examining farms in all production sectors. The result in agriculture is the item in farm enterprises' financial statements which is transferred to the owner of the enterprise as personal earned and capital income from agriculture. These data derive from the 2014 statistics on the finances of agricultural and forestry enterprises published now.

Development of the result in agriculture in Finland in 2004 to 2014



During the monitoring period from 2004 to 2014, the result of agriculture has grown most, by around 76 per cent, in dairy cattle farms, where the result by farm was, on average, around EUR 51,000. On poultry farms, the result from agriculture in 2014 was, on average, EUR 54,000, which means that the result has grown by around 63 per cent from 2004. On farms focusing on cereal farming, the result from agriculture grew by around 22 per cent in 2004 to 2014 being, on average, EUR 9,300 in 2014. Farms focusing on other plant production increased their result by around 13 per cent from 2004 as the average farm-specific result was around EUR 10,200 per enterprise in 2014. In the review, agriculture and forestry are examined separately. The results of agricultural enterprises are examined in Section 1 of the review. Information based on personal tax data is given in Section 2 of the review and statistics on private forestry in Section 3.

Contents

Inquiries

Juhapekka Kyllönen 050 551 2339
Director in charge:
Mari Ylä-Jarkko

maataloustilastot@stat.fi
www.stat.fi

Source: Statistics on the finances of agricultural and forestry enterprises, Statistics Finland