

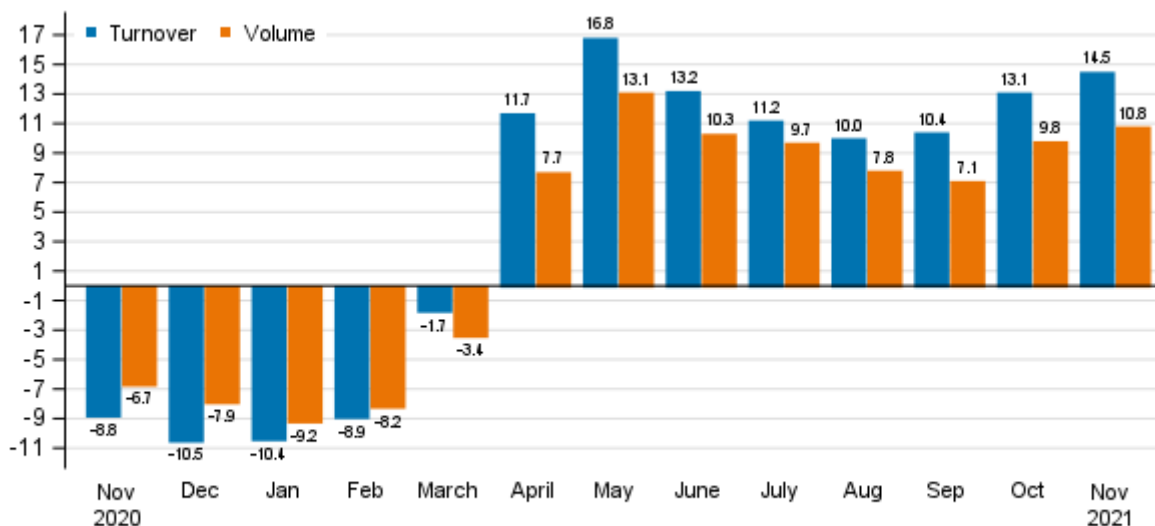
# Turnover in service industries

2021, November

## Turnover and output in services grew in November

According to Statistics Finland, working day adjusted turnover in service industries grew by 14.5 per cent in November 2021 from November 2020. Service output or volume, from which the impact of prices has been eliminated, grew by 10.8 per cent over the same period. In October 2021, turnover reached a growth of 13.1 per cent, while volume went up by 9.8 per cent from one year back. The development was partly due to the exceptional situation caused by the coronavirus one year earlier. Services are here examined exclusive of trade.

### Annual change in working day adjusted turnover and volume of service industries, %



Source: Statistics Finland

## Service industries most hit by corona still behind November 2019

Growth in working day adjusted turnover in service industries accelerated in November 2021 to 4.4 per cent compared to November 2019 prior to the coronavirus period. In the corresponding period, the volume of service industries grew by 3.3 per cent. However, for some service industries, the development of working day adjusted turnover and volume still remained on a lower level than in November 2019.

In November 2021, development in arts, entertainment and recreation activities was still clearly lower than in the corresponding period of 2019. The working day adjusted turnover of the industry decreased by 27.4 per cent from November 2019. Correspondingly, turnover in accommodation and food service activities was 5.5 per cent lower and volume 7.1 per cent lower than in November of the year prior to the coronavirus period. At the same time, working day adjusted turnover in transportation and storage, in turn, reached a slight growth of 0.2 per cent, while the volume of the industry was still falling by 4.0 per cent.

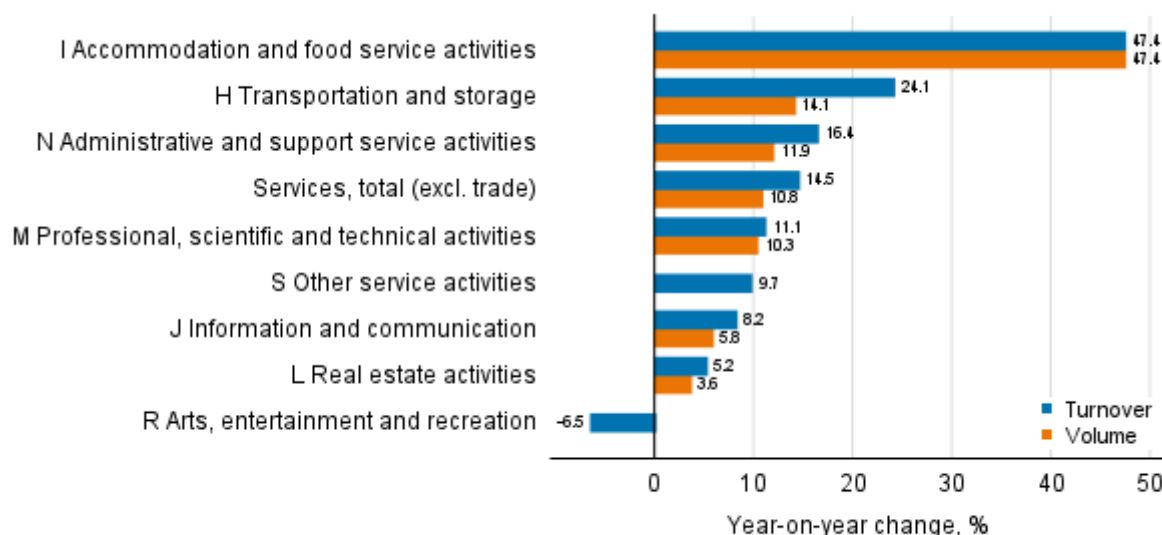
## Main service industries grew except arts, entertainment and recreation activities

Turnover and volume grew in nearly all main service industries in November 2021. Only the turnover in arts, entertainment and recreation activities declined from the previous year, being 6.5 per cent lower. Adjusted for working days, turnover and volume in accommodation and food service activities rose by as much as 47.4 per cent from November 2020. In transportation and storage, turnover went up by 24.1 per cent while volume grew by 14.1 per cent. In administrative and support service activities, working day adjusted turnover rose by 16.4 per cent and volume by 11.9 per cent from November the year before.

In other main service industries, development was more subdued than the average development in service industries. In November 2021, working day adjusted turnover in professional, scientific and technical activities increased by 11.1 per cent and volume by 10.3 per cent from the year before. The working day adjusted turnover of other service activities went up by 9.7 per cent from November 2020.

In the industry of information and communication, working day adjusted turnover grew by 8.2 per cent in November 2021 while the volume of the industry was growing by 5.8 per cent over the same period. Working day adjusted turnover in real estate activities, in turn, went up by 5.2 per cent and volume by 3.6 per cent from November 2020.

**Annual change in working day adjusted turnover and volume of service industries, November 2021, % (TOL 2008)**

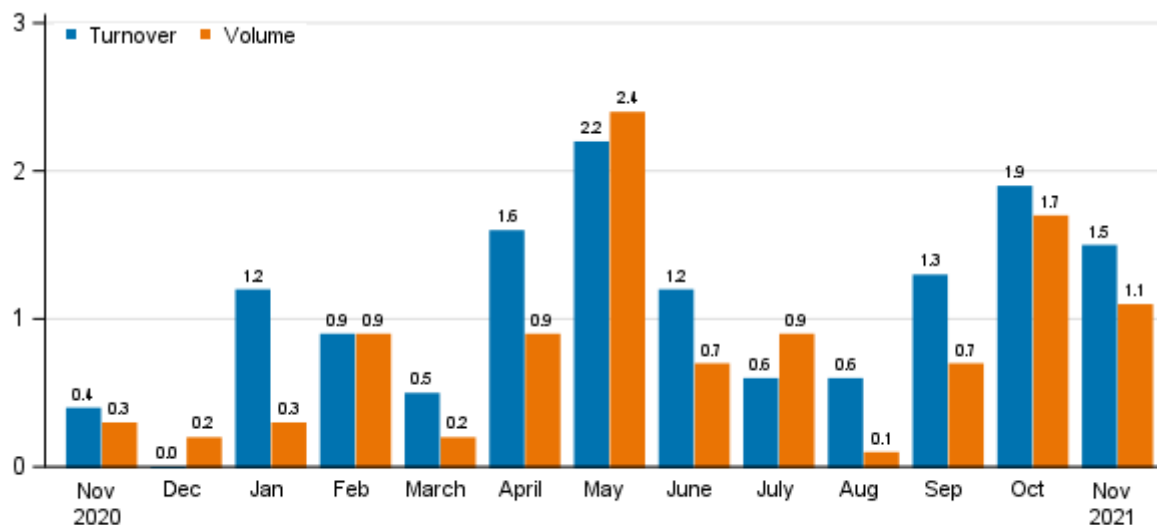


Source: Statistics Finland

## Turnover and output grew from the previous month

Seasonally adjusted turnover in service industries rose by 1.5 per cent in November 2021 compared with October. The output of services, from which the impact of prices has been eliminated, grew by 1.1 per cent over the same period. In October of 2021, turnover grew by 1.9 per cent from September, while volume was up by 1.7 per cent.

**Change in seasonally adjusted turnover and volume from the previous month of service industries, %**



Source: Statistics Finland

The data for the latest month are preliminary and are released at a delay of around six weeks. The data may become significantly revised particularly on more detailed industry levels in coming months. The volume of service industries is calculated by eliminating the effect of price changes from the turnover index.

The factors caused by the variation in the number of weekdays are taken into account in adjustment for working days. This means taking into consideration the lengths of months, different weekdays and holidays. In addition, seasonal variation is eliminated from seasonally adjusted series, on account of which it makes sense to compare observations of two successive months as well.

# Contents

## Tables

### Appendix tables

Appendix table 1. Annual change in working day adjusted turnover and volume in sectors of services, % (TOL 2008).....	5
---	---

## Figures

### Appendix figures

Appendix figure 1. Turnover and volume of service industries, trend series.....	6
Appendix figure 2. Turnover and volume of transportation and storage, trend series.....	6
Appendix figure 3. Turnover and volume of information and communication, trend series.....	7
Appendix figure 4. Turnover and volume of real estate activities, trend series.....	7
Appendix figure 5. Turnover and volume of professional, scientific and technical activities, trend series.....	8
Appendix figure 6. Turnover and volume of administrative and support service activities, trend series.....	8

Revisions in these statistics.....	9
------------------------------------	---

# Appendix tables

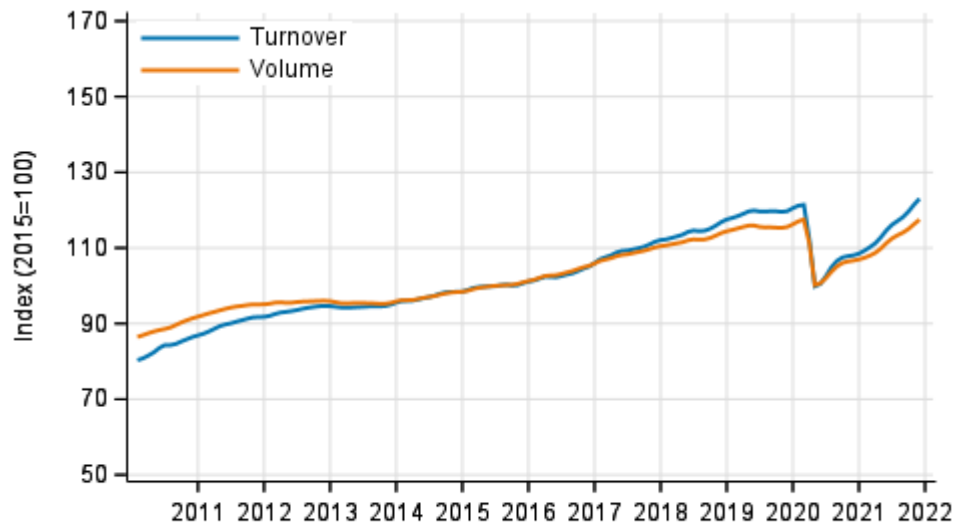
**Appendix table 1. Annual change in working day adjusted turnover and volume in sectors of services, % (TOL 2008)**

		Year-on-year change by three-month period, % <sup>1)</sup>				Cumulative year-on-year change, % <sup>1)</sup>	Year-on-year change in the latest month, % <sup>1)</sup>
		12/2020-02/2021	03-05/2021	06-08/2021	09-11/2021		
HIJLMNRS Other service activities total	Turnover	-10.0	8.4	11.5	12.7	7.0	14.5
	Volume	-8.4	5.4	9.3	9.2	4.9	10.8
H Transportation and storage	Turnover	-20.1	6.9	13.4	20.2	7.0	24.1
	Volume	-20.0	0.6	5.3	10.7	0.7	14.1
I Accommodation and food service activities	Turnover	-38.6	30.3	16.6	31.4	10.4	47.4
	Volume	-39.8	27.8	15.7	29.3	8.5	47.4
J Information and communication	Turnover	2.6	6.5	9.3	7.9	7.0	8.2
	Volume	3.5	6.4	8.2	6.6	6.6	5.8
L=68 Real estate activities	Turnover	1.4	5.6	5.2	5.4	4.5	5.2
	Volume	0.4	4.3	4.1	3.9	3.2	3.6
M Professional, scientific and technical activities	Turnover	-1.9	8.1	12.4	10.4	8.3	11.1
	Volume	-1.6	7.3	11.1	9.5	7.1	10.3
N Administrative and support services activities	Turnover	-12.3	10.6	13.1	14.2	8.0	16.4
	Volume	-9.3	6.8	8.7	10.0	5.4	11.9
R Arts, entertainment and recreation	Turnover	-30.2	6.6	17.7	-2.8	-1.8	-6.5
S Other service activities	Turnover	-7.8	12.9	7.7	8.7	6.4	9.7

1) Year-on-year change compares the value for an examined time period to the value for the corresponding time period twelve months back.

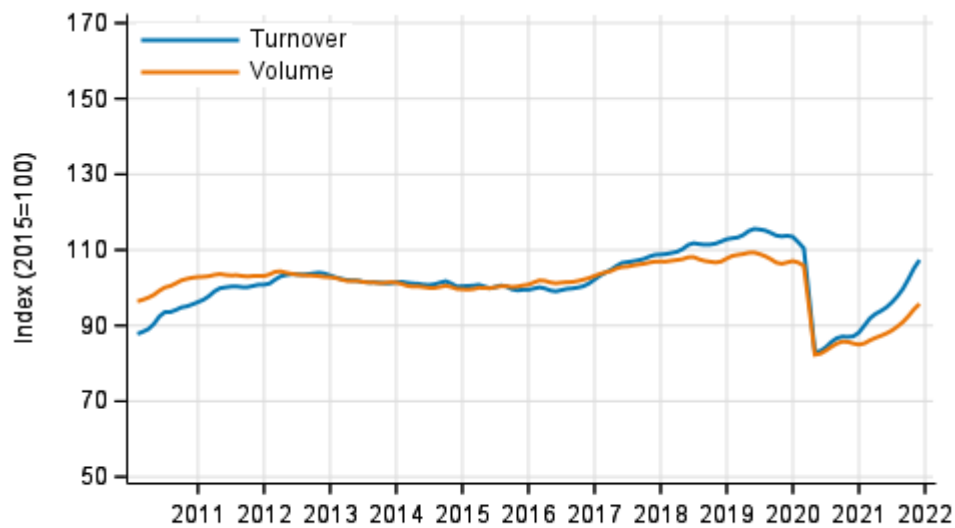
# Appendix figures

**Appendix figure 1. Turnover and volume of service industries, trend series**



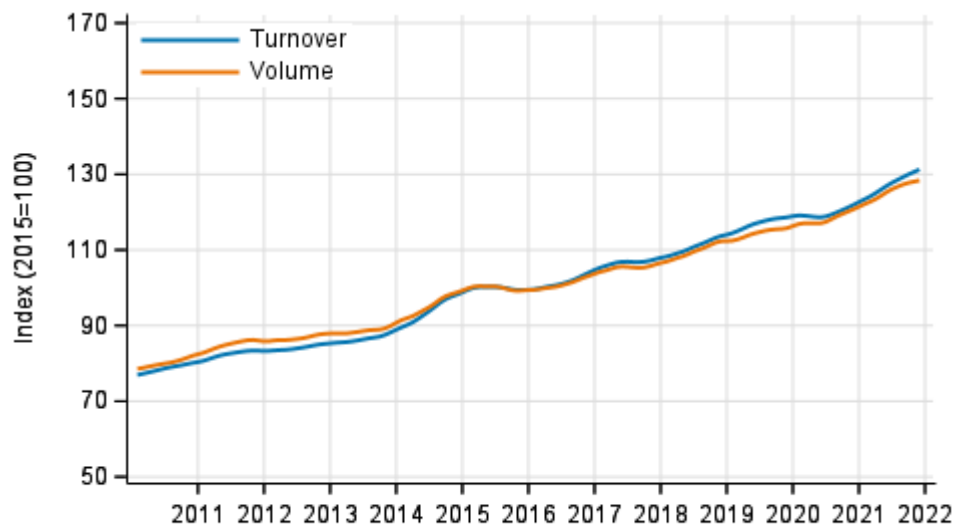
Source: Statistics Finland

**Appendix figure 2. Turnover and volume of transportation and storage, trend series**



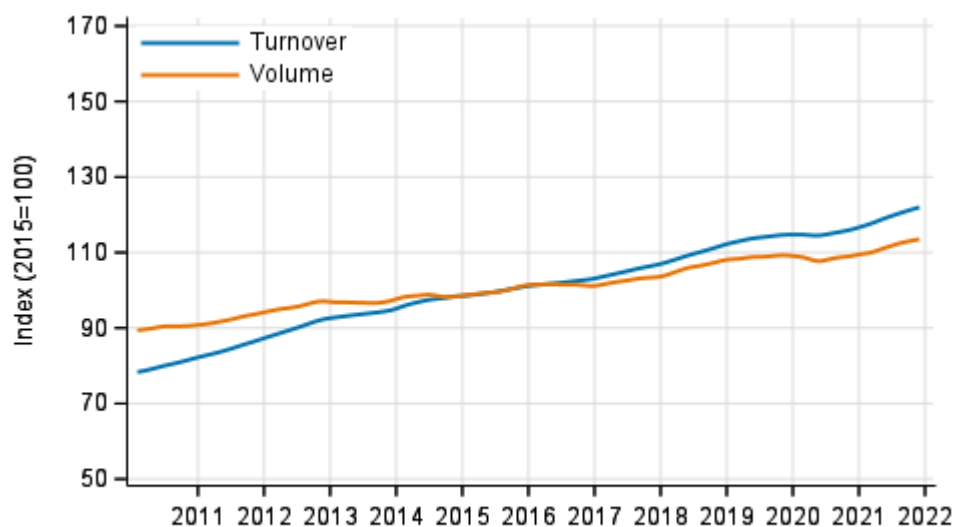
Source: Statistics Finland

**Appendix figure 3. Turnover and volume of information and communication, trend series**



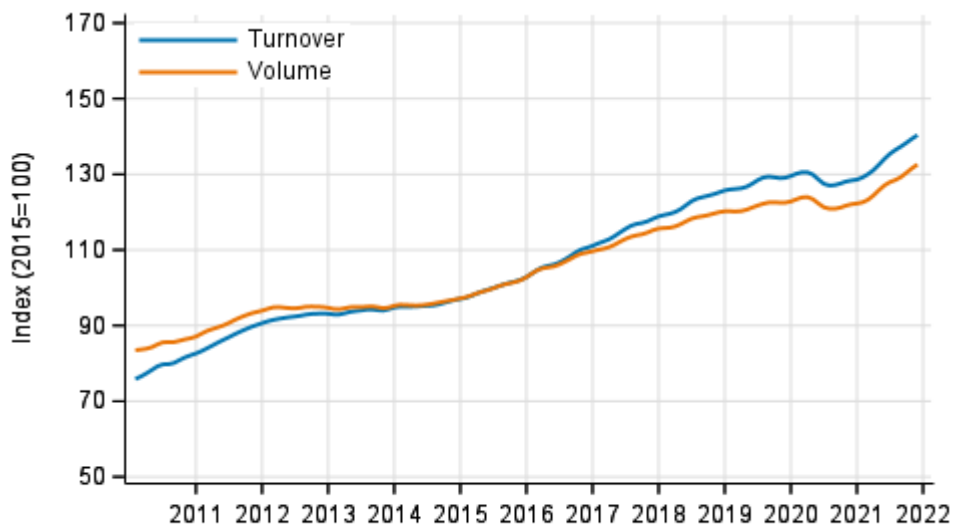
Source: Statistics Finland

**Appendix figure 4. Turnover and volume of real estate activities, trend series**



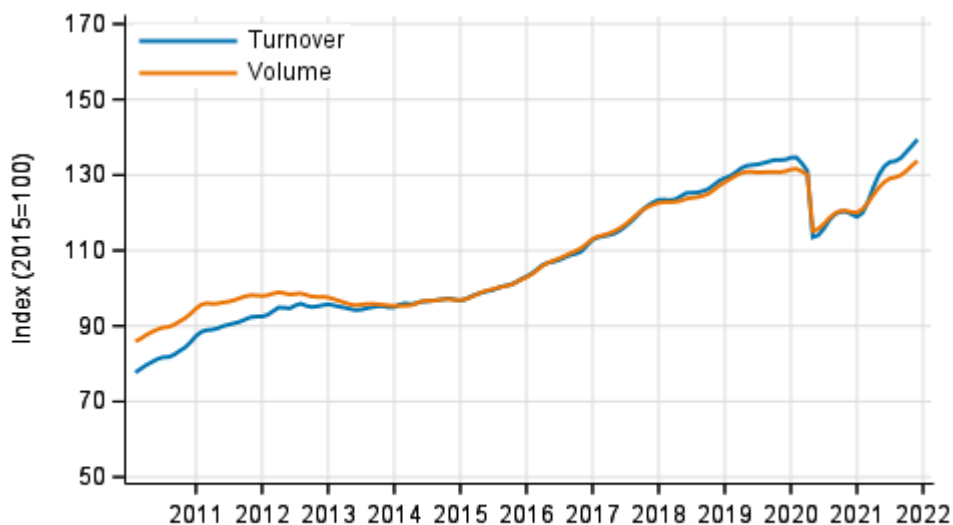
Source: Statistics Finland

**Appendix figure 5. Turnover and volume of professional, scientific and technical activities, trend series**



Source: Statistics Finland

**Appendix figure 6. Turnover and volume of administrative and support service activities, trend series**



Source: Statistics Finland



## Revisions in these statistics

The data of the statistics have become revised according to the table below. Revisions to annual changes in all industries published from the statistics are presented in the StatFin database tables [on the monthly level](#) and [on the annual level](#). For more information about data revisions, see Section 3 of the quality description (only in Finnish).

### Revision to annual changes in working day adjusted turnover in sectors of services<sup>1)</sup>

Industry / Reference period		Year-on-year change, %		Revision, percentage point
		1st release	Latest release (2022-01-14)	
HIJLMNRS Other service activities total	06/2021	14.3	13.2	-1.1
	07/2021	12.5	11.2	-1.3
	08/2021	9.7	10.0	0.3
	09/2021	10.5	10.4	-0.1
	10/2021	12.8	13.1	0.3
H Transportation and storage	06/2021	12.7	13.3	0.6
	07/2021	13.5	13.4	-0.1
	08/2021	12.0	13.5	1.5
	09/2021	14.9	16.0	1.1
	10/2021	19.8	20.3	0.5
I Accommodation and food service activities	06/2021	38.6	26.0	-12.6
	07/2021	20.4	20.1	-0.3
	08/2021	11.7	5.7	-6.0
	09/2021	12.8	14.5	1.7
	10/2021	34.7	35.0	0.3
J Information and communication	06/2021	10.6	10.4	-0.2
	07/2021	9.3	7.2	-2.1
	08/2021	10.0	10.2	0.2
	09/2021	7.8	8.1	0.3
	10/2021	7.6	7.4	-0.2
L=68 Real estate activities	06/2021	7.7	4.3	-3.4
	07/2021	4.6	3.9	-0.7
	08/2021	5.0	7.3	2.3
	09/2021	4.7	1.4	-3.3
	10/2021	6.7	10.0	3.3
M Professional, scientific and technical activities	06/2021	14.0	15.1	1.1
	07/2021	15.8	12.3	-3.5
	08/2021	9.0	9.4	0.4
	09/2021	11.4	11.8	0.4
	10/2021	9.5	8.5	-1.0
N Administrative and support services activities	06/2021	16.1	15.6	-0.5
	07/2021	14.0	13.1	-0.9
	08/2021	10.4	10.6	0.2
	09/2021	14.4	13.7	-0.7
	10/2021	13.3	12.5	-0.8
R Arts, entertainment and recreation	06/2021	30.5	30.4	-0.1
	07/2021	14.6	14.6	0.0
	08/2021	8.5	9.9	1.4
	09/2021	3.8	-1.6	-5.4
	10/2021	-3.3	-0.7	2.6

Industry / Reference period		Year-on-year change, %		Revision, percentage point
		1st release	Latest release (2022-01-14)	
S Other service activities	06/2021	11.8	11.0	-0.8
	07/2021	7.9	7.0	-0.9
	08/2021	2.5	5.1	2.6
	09/2021	6.6	6.3	-0.3
	10/2021	10.1	10.0	-0.1

1) The 1st release refers to the time when data for the reference period were released for the first time. The revision describes the difference of annual change percentages between the first and latest release.

### Revision to long-term annual changes in working day adjusted turnover in sectors of services

Industry	Year	Average <sup>1)</sup>	Average for absolute values <sup>2)</sup>
HIJLMNRS Other service activities total	2017	-1.0	1.0
	2018	-0.8	0.8
	2019	0.3	0.8
H Transportation and storage	2017	-0.3	0.4
	2018	-0.8	0.9
	2019	-0.4	0.6
I Accommodation and food service activities	2017	0.1	0.6
	2018	-0.6	0.6
	2019	0.6	1.2
J Information and communication	2017	-0.1	0.7
	2018	-0.2	0.6
	2019	0.5	1.5
L=68 Real estate activities	2017	-2.5	2.8
	2018	-2.4	2.4
	2019	-0.2	1.4
M Professional, scientific and technical activities	2017	-2.6	2.6
	2018	-1.5	1.5
	2019	0.2	1.0
N Administrative and support services activities	2017	-1.0	1.0
	2018	-1.0	1.1
	2019	0.6	0.9
R Arts, entertainment and recreation	2017	-1.3	2.3
	2018	0.4	0.6
	2019	3.5	3.5
S Other service activities	2017	-0.9	1.1
	2018	-1.2	1.4
	2019	0.5	1.3

1) The average have been calculated upon completion of the data for the first and last release months in the statistical reference year, when the official structural business and financial statement statistics are also published.

2) The average have been calculated from the absolute values of differences between the first and last release months in the statistical reference year, when the official structural business and financial statement statistics are also published.

## Inquiries

Aki Niskanen                   029 551 2657  
Katja Liukkonen               029 551 3515  
Tony Valve                     029 551 3453  
Head of Department in  
charge:  
Katri Kaaja

[myynti.palvelut@stat.fi](mailto:myynti.palvelut@stat.fi)  
[www.stat.fi](http://www.stat.fi)

Source: Turnover of service industries, Statistics Finland