

# *Human resources of science and technology in 2007*

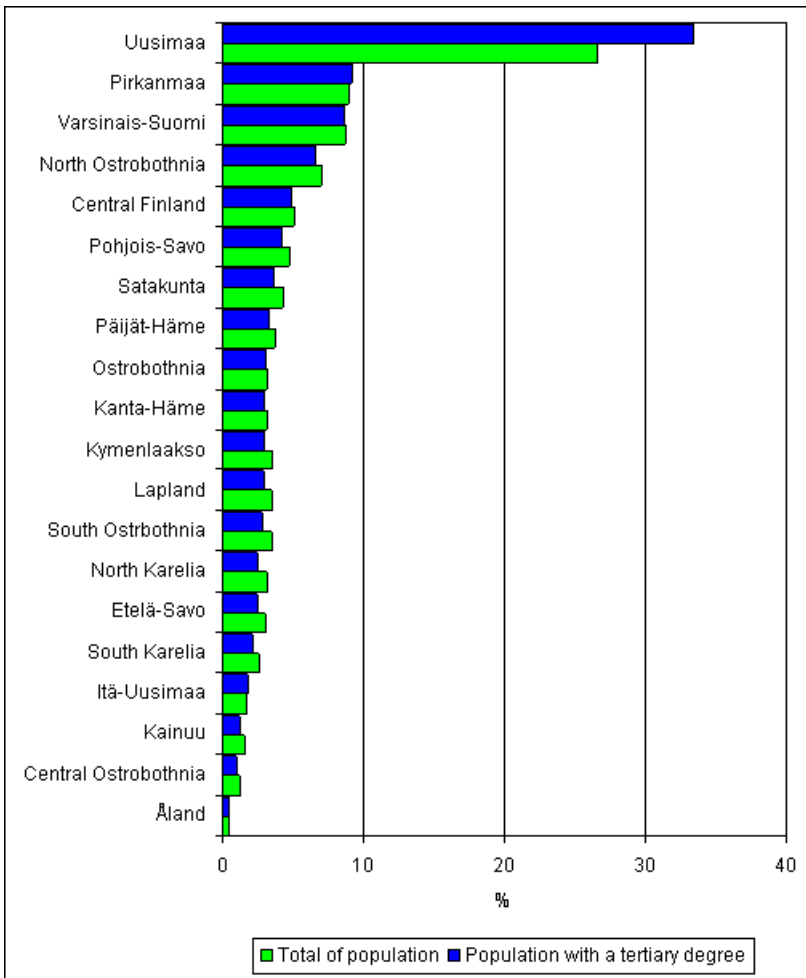
---

## *One-third of highly educated population live in the Region of Uusimaa*

In 2006, one-third (33.4%) of the highly educated population aged 16 to 74 lived in the Region of Uusimaa, nine per cent in both Varsinais-Suomi and Pirkanmaa, and approximately seven per cent in North Ostrobothnia. The combined share of these four regions with the largest proportions was 58 per cent of the country's highly educated population. Their share of the whole population of the country was 51 per cent.

In 2006, twenty-eight per cent of the population of the whole country had completed tertiary education. The share of highly educated population increased by three percentage points from the year 2000, and was the highest in the Region of Uusimaa at 35 per cent. The Region of Kainuu had the lowest share of 22 per cent. The share of highly educated employees of all employees was also clearly the highest in Uusimaa (43%). In Pirkanmaa it was 37 per cent and in North Ostrobothnia and Central Finland 36 per cent.

**Population with a tertiary degree and total population by region in 2006**



In 2006, the proportion of highly educated employees of all employed labour force increased by just short of one percentage point from the previous year (37%). The proportion of men among the highly educated employees remained on level with the previous year at 31 per cent whereas that of women grew by just under one percentage point (42%). Unemployment among the highly educated labour force was 4.9 per cent. The unemployment rate was slightly higher for women (5%) than men (4.8%).

There was little change from the past few years in the distribution of highly educated employees by industry. The share of highly educated employees was the highest, or 18 per cent, in human health activities. One-third of those with a doctorate level degree were employed by universities and approximately 16 per cent by human health activities. Around 29 per cent of those with a higher level university degree worked in the field of education. The largest shares of attainers of other tertiary degrees were employed by human health activities (21%), trade (13%) and business services (11%)

### Highly educated employees by economic activity and completed degree in 2006

	Share of employees, %	Doctorate level degree %	Higher-degree level %	Other tertiary degrees %	Total %
Agriculture, forestry and fishery	18,3	0,4	0,9	2,4	1,9
Mining and quarrying	19,0	0,1	0,1	0,1	0,1
Food, textiles	19,4	0,3	0,7	1,3	1,2
Wood products, pulp, paper product	28,2	2,6	3,8	4,2	4,1
Metals, machinery and equipmen	27,9	2,3	4,4	6,3	5,7
Computers, telecommunication equipment	61,7	2,5	3,8	2,1	2,6
Other manufacturing	21,0	0,2	0,4	1,0	0,8
Electricity, gas and water supply	44,1	0,2	0,6	0,9	0,8
Construction	16,6	0,2	0,7	3,9	2,9
Trade	25,1	1,7	5,0	13,1	10,5
Transport, communications	17,3	0,3	1,3	3,9	3,1
Telecommunications	53,5	0,2	0,7	1,1	1,0
Financial and insurance intermediatio	62,0	0,9	3,0	3,4	3,2
Computer and related activities	61,3	1,4	4,2	3,0	3,3
Business services	38,6	4,7	11,0	11,2	11,0
Public sector research institutes	72,6	7,9	1,7	0,4	1,0
Other research activities	70,1	2,1	0,5	0,2	0,3
Universities	74,6	32,5	5,2	0,8	2,9
Other higher education	83,4	3,9	1,6	0,4	0,8
Other education	71,6	7,0	22,2	6,1	10,5
Human health activities	45,2	15,9	11,8	21,2	18,4
Public administration	57,3	8,1	10,1	7,9	8,5
Other economic activities	34,6	3,3	5,8	4,4	4,8
Activity unknown/missing	22,1	0,4	0,5	0,7	0,6
Economic activities, total	36,6	100,0	100,0	100,0	100,0

# Contents

## Tables

1. Tertiary degrees by the field of science in 1995, 2001 and 2007.....	5
2. Population with a tertiary degree in 2001 and 2006.....	5
3. Population with a tertiary degree by principal activity in 2006.....	6
4. Employed population with tertiary level education in 2006.....	6

## Figures

1. Doctorate and licentiate degrees in 1991 - 2007.....	7
2. Doctorate level degrees and the proportion of women 1995 - 2007.....	7
3. Persons with doctorate degree, median ages by the field of science in 1991 - 2007.....	8
4. Persons with tertiary degrees as a proportion of the population aged 16 to 74 in 2000 - 2006.....	8
5. Unemployment rates of persons with doctorate level and higher-degree level tertiary education by the field of science in 2006.....	9
6. Persons with doctorate level and higher-degree level tertiary education as a percentage by the field of science in 2006.....	9

## Tables

### 1. Tertiary degrees by the field of science in 1995, 2001 and 2007

Tertiary degree	Fields of science	Year (completion of degree)		
		1995	2001	2007
Tertiary degrees total	Fields of science total	41794	38205	45035
Doctorate	Fields of science total	786	1187	1528
	Natural sciences	179	223	373
	Engineering and technology	114	197	279
	Medical and health sciences	221	334	293
	Agricultural sciences	22	39	52
	Social sciences	168	258	358
	Humanities	82	136	173
Licentiate	Fields of science total	809	689	460
	Natural sciences	153	165	128
	Engineering and technology	165	142	83
	Medical and health sciences	23	37	9
	Agricultural sciences	19	6	9
	Social sciences	278	226	145
	Humanities	171	113	86
Highest-level tertiary degree	Fields of science total	11270	12543	15099
	Natural sciences	1071	1420	1704
	Engineering and technology	1770	2061	2441
	Medical and health sciences	1657	1651	1977
	Agricultural sciences	223	219	337
	Social sciences	4728	5150	6092
	Humanities	1821	2042	2548
Other tertiary degrees	Field of science undefined	28929	23786	27948

### 2. Population with a tertiary degree in 2001 and 2006

Tertiary degree	Field of science	Year			
		2001		2006	
		Total	of which women	Total	of which women
Tertiary degrees total	Fields of science total	979020	540369	1092092	613819
Doctorate	Fields of science total	15119	4862	20589	7664
	Natural sciences	3424	949	4577	1484
	Engineering and technology	1975	238	2940	455
	Medical and health sciences	4846	1932	6079	2801
	Agricultural sciences	654	258	880	377
	Social sciences	2585	883	3935	1616
	Humanities	1635	602	2178	931
Licentiate	Fields of science total	8630	3078	9227	3668
	Natural sciences	1818	611	1803	667
	Engineering and technology	2237	348	2407	424
	Medical and health sciences	244	192	266	206
	Agricultural sciences	190	74	190	80
	Social sciences	2708	1144	3039	1476
	Humanities	1433	709	1522	815
Higher degree level	Fields of science total	232540	117378	283809	150439
	Natural sciences	24645	11717	30315	14717
	Engineering and technology	39704	6371	48165	8639
	Medical and health sciences	25572	16173	29184	19119
	Agricultural sciences	9192	4205	10002	4961
	Social sciences	93385	49953	117055	66899
	Humanities	40042	28959	49088	36104
Other tertiary degrees	Undefined field of science	722731	415051	778467	452048

### 3. Population with a tertiary degree by principal activity in 2006

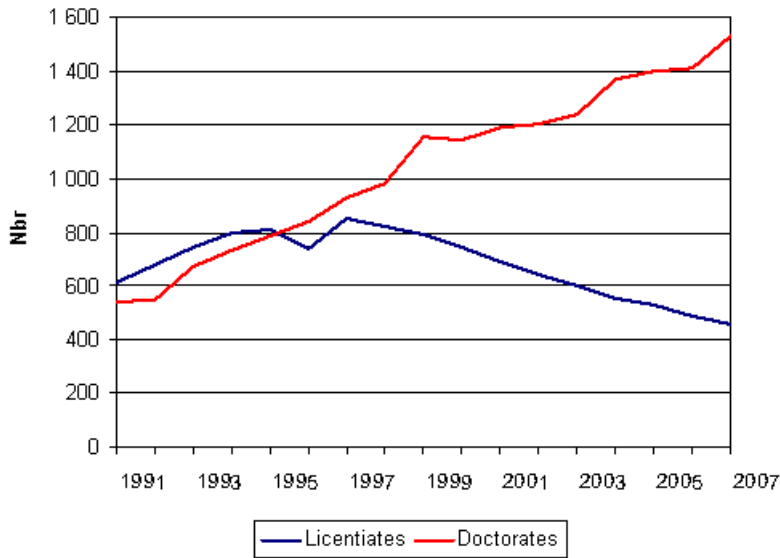
Tertiary degree	Field of science	Principal activity				
		Principal activity total	In labour force	Employed	Unemployed	Not in labour force
Tertiary degrees total	Fields of science total	1092092	895626	851575	44051	196466
Doctorate	Fields of science total	20589	17549	17138	411	3040
	Natural sciences	4577	3846	3708	138	731
	Engineering and technology	2940	2638	2608	30	302
	Medical and health sciences	6079	5233	5175	58	846
	Agricultural sciences	880	726	700	26	154
	Social sciences	3935	3389	3299	90	546
	Humanities	2178	1717	1648	69	461
Licentiate	Fields of science total	9227	7522	7233	289	1705
	Natural sciences	1803	1431	1366	65	372
	Engineering and technology	2407	2084	2022	62	323
	Medical and health sciences	266	221	219	2	45
	Agricultural sciences	190	142	131	11	48
	Social sciences	3039	2507	2435	72	532
	Humanities	1522	1137	1060	77	385
Higher degree level	Fields of science total	283809	242842	233694	9148	40967
	Natural sciences	30315	25668	24391	1277	4647
	Engineering and technology	48165	42298	41033	1265	5867
	Medical and health sciences	29184	25234	24973	261	3950
	Agricultural sciences	10002	8174	7818	356	1828
	Social sciences	117055	102169	98657	3512	14886
	Humanities	49088	39299	36822	2477	9789
Other tertiary degrees	Undefined field of science	778467	627713	593510	34203	150754

### 4. Employed population with tertiary level education in 2006

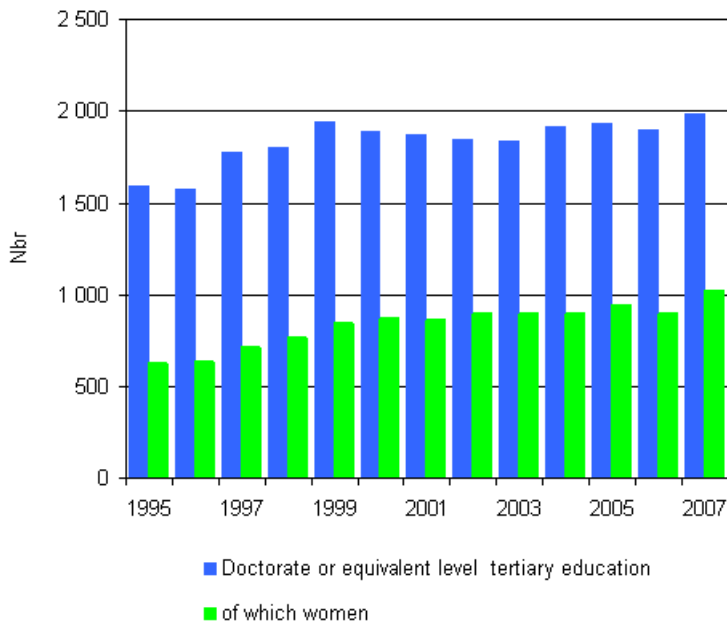
Industry	Tertiary degree				
	Tertiary degrees total	Doctorate	Licentiate	Higher-degree level	Other tertiary degrees
Industries total	851575	17170	7201	233694	593510
Agriculture, forestry and fishery	16400	64	35	2013	14288
Mining and quarrying	855	7	7	192	649
Food, textiles	9601	48	16	1653	7884
Wood products, pulp, paper products	34508	413	230	8880	24985
Metals, machinery and equipment	48466	308	256	10398	37504
Computers, telecommunication equipment	21788	341	259	8861	12327
Other manufacturing	6842	18	27	966	5831
Electricity, gas and water supply	7002	22	29	1476	5475
Construction	24779	16	34	1685	23044
Trade	89685	250	165	11574	77696
Transport, communications	26608	31	42	3119	23416
Telecommunications	8444	15	25	1629	6775
Financial and insurance intermediation	27509	98	130	7046	20235
Computer and related activities	28090	188	163	9747	17992
Business services	93453	576	563	25590	66724
Research institutes in public sector	8510	1449	466	4069	2526
Other research activities	2591	400	104	1127	960
Universities	24714	6593	1573	12052	4496
Other tertiary education	6722	443	500	3675	2104
Other education	89469	737	968	51844	35920
Human health activities	157069	3461	417	27567	125624
Public administration	72650	1148	828	23658	47016
Other industry	40564	480	323	13658	26103
Industry unknown	5256	64	41	1215	3936

# Figures

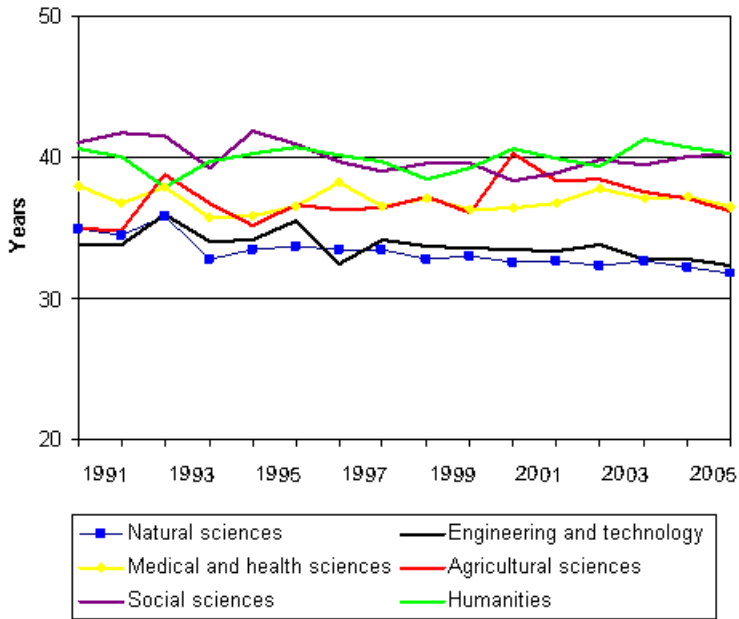
## 1. Doctorate and licentiate degrees in 1991 - 2007



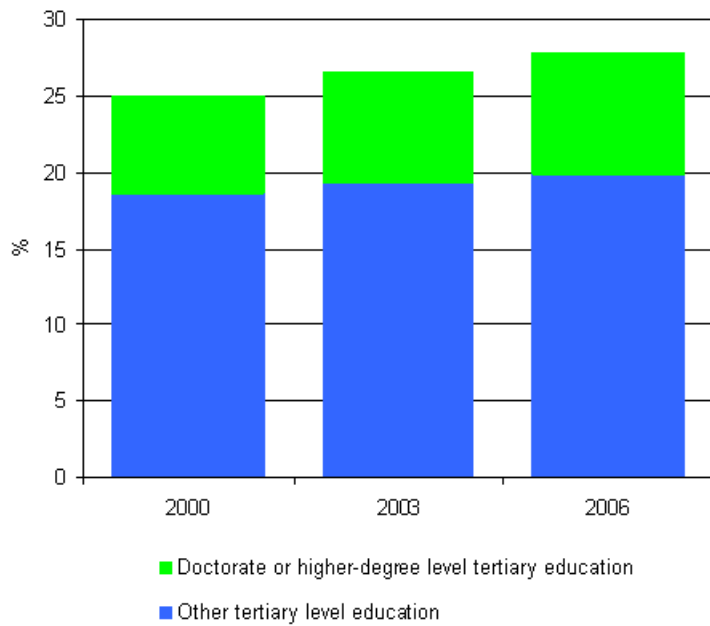
## 2. Doctorate level degrees and the proportion of women 1995 - 2007



**3. Persons with doctorate degree, median ages by the field of science in 1991 - 2007**

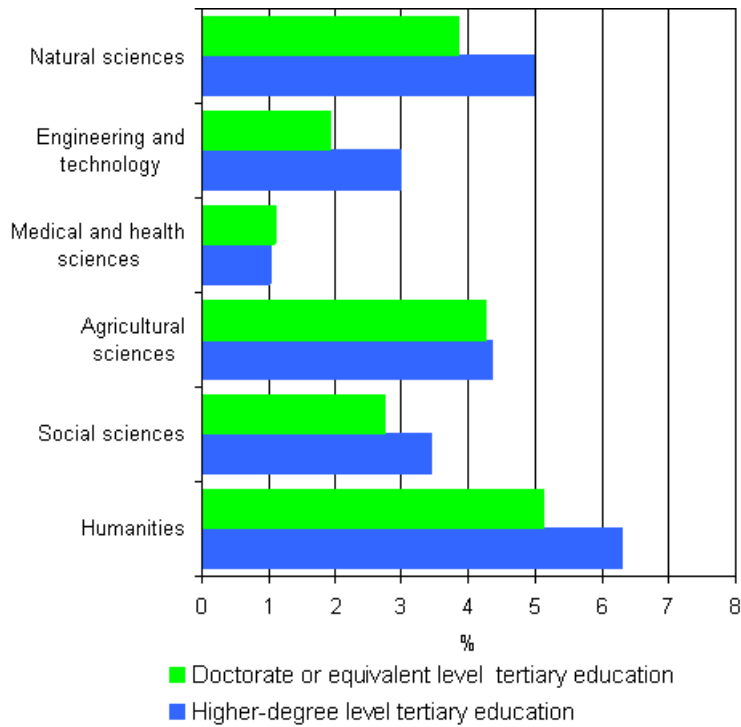


**4. Persons with tertiary degrees as a proportion of the population aged 16 to 74 in 2000 - 2006**

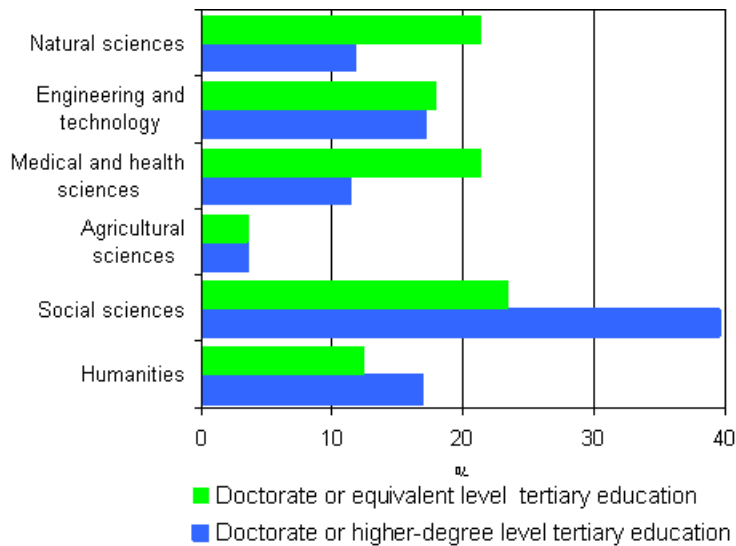




**5. Unemployment rates of persons with doctorate level and higher-degree level tertiary education by the field of science in 2006**



**6. Persons with doctorate level and higher-degree level tertiary education as a percentage by the field of science in 2006**



---

Suomen virallinen tilasto  
Finlands officiella statistik  
Official Statistics of Finland

*Science, Technology and Information Society 2008*

*Inquiries*

Markku Virtaharju (09) 1734 3290  
Director in charge:  
Leena Storgårds

Sähköpostiosoite

[www.stat.fi](http://www.stat.fi)