

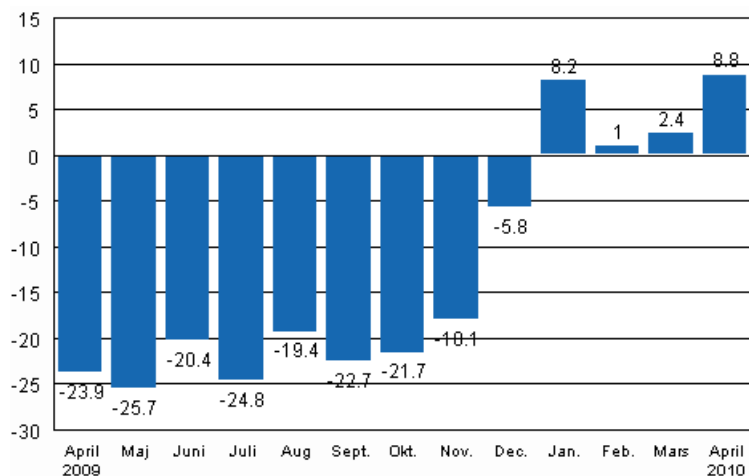
Volume index of industrial output

2010, April

Industrial output shows strong growth

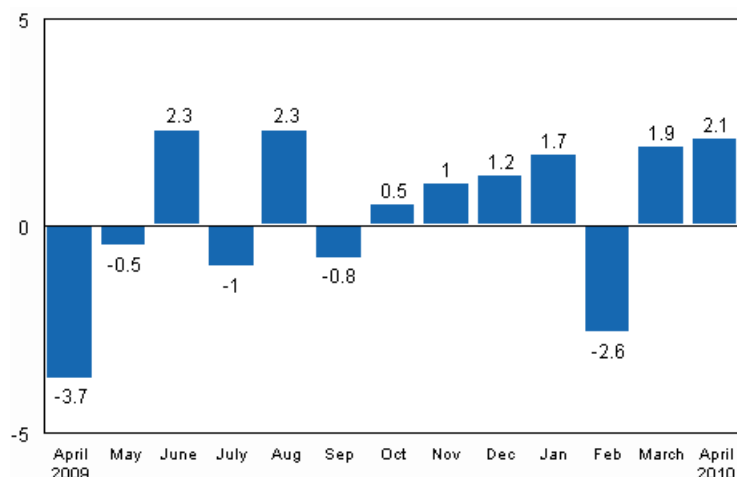
According to Statistics Finland, output of total industries adjusted for working days was 8.8 per cent higher in April 2010 than twelve months earlier. In March output was 2.4 per cent higher than one year before. In the first third of 2010 industrial output has grown by five per cent from one year back.

Working day adjusted change in industrial output (BCDE) from corresponding month previous year, %, TOL 2008



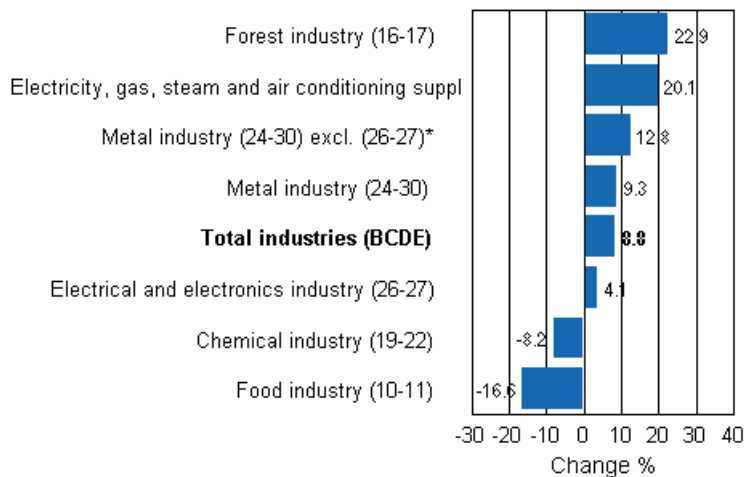
In April, seasonally adjusted output grew by 2.1 per cent from the previous month. In March output went up by 1.9 per cent from February. In February seasonally adjusted output fell by 2.6 per cent from January.

Seasonally adjusted change in industrial output (BCDE) from previous month, %, TOL 2008



Among industries working day adjusted output grew by most, or by nearly 23 per cent, in the forest industry. After nearly eighteen months of decline growth was now also recorded in the metal industry. Its output went up by 9.3 per cent in April. In the chemical industry, output decreased by good 8 per cent in April. The main reason for the fallen the output of the chemical industry was a service shutdown in oil refining. Output adjusted for working days fell by most, or by just short of 17 per cent, in the food industry. The decline was mainly caused by industrial action.

Working day adjusted change in industrial output by industry 4/2009-4/2010, %, TOL 2008



Capacity utilisation rate in manufacturing went up again in April when it was 69 per cent, or just two percentage point higher than twelve months back. In the forest industry capacity utilisation rate was 84.8 per cent, and had risen by good 19 percentage points from one year back. Capacity utilisation rate in the metal industry was 66 per cent, having gone up by good three percentage points from one year back.

Estimation

Statistics Finland has increased the use of estimation and around ten per cent of the index for April was estimated. In the Electrical and electronics industry (26-27) estimation was used in the calculation of the April index. In addition, the Tax Administration’s payment control data are used to compile statistics on the production of enterprises with fewer than 50 employees. Enterprises with fewer than 50 employees

account for around 13 per cent of total industries and these data cover nearly 70 per cent of the production of enterprises with fewer than 50 employees. These data are not at Statistics Finland's disposal by the release date of the volume index of industrial output. For this reason the data on these enterprises are estimated for the month the release relates to. The payment control data will be available when releasing data for the month for the second time, i.e. in the data for March.

Revised data for April will be published at 9 am on 9 July 2010 in connection with the industrial output data for May. Because of the method used, seasonally adjusted figures for previous months may change even if the original figures do not become revised. The seasonally adjusted figures will also be adjusted for working days.

Contents

Industrial output grew by 8.8 per cent in April	5
Figures	
Working day adjusted change percentage of industrial output April 2009 /April 2010, TOL 2008.....	7
Seasonally adjusted change percentage of industrial output March 2010 /April 2010, TOL 2008.....	7
Trend of industrial output Finland, Germany, Sweden, France and United Kingdom (BCD) 2000 - 2010, 2005=100, TOL 2008.....	8

Industrial output grew by 8.8 per cent in April

According to Statistics Finland, output of total industries adjusted for working days was 8.8 per cent higher in April 2010 than twelve months earlier. Compared to March seasonally adjusted output grew by 2.1 per cent.

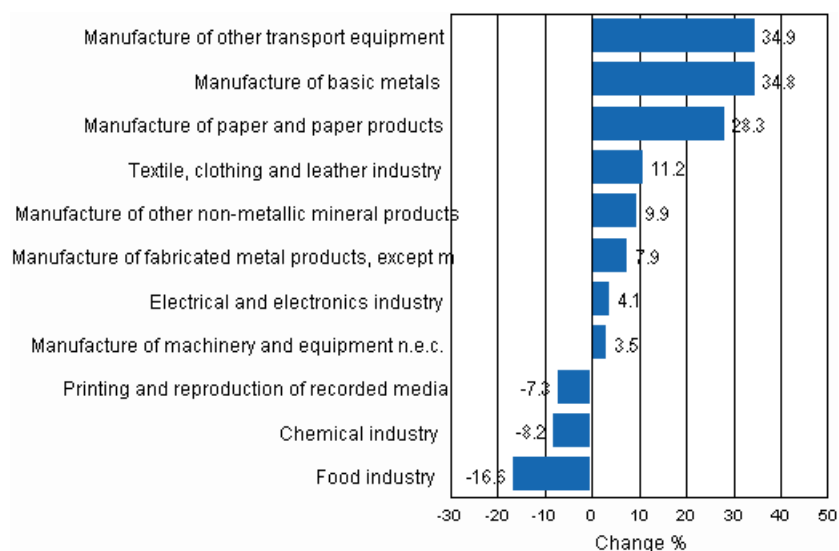
In mining and quarrying working day adjusted output grew by 22.7 per cent from one year ago. Output in manufacturing adjusted for working days exceeded the previous year's level by 6.2 per cent. The biggest year-on-year growth of as much as 38.5 per cent in output adjusted for working days was recorded in the manufacture of motor vehicles. The long period of decline in the paper industry ended late last year. Its pace of growth accelerated in April and amounted to good 28 per cent. Output declined by most, or by good 16 per cent, in the food industry. The decline is explained by industrial action in the industry in April.

Volume index of industrial output, value added, original, working day adjusted, seasonally adjusted change percentage

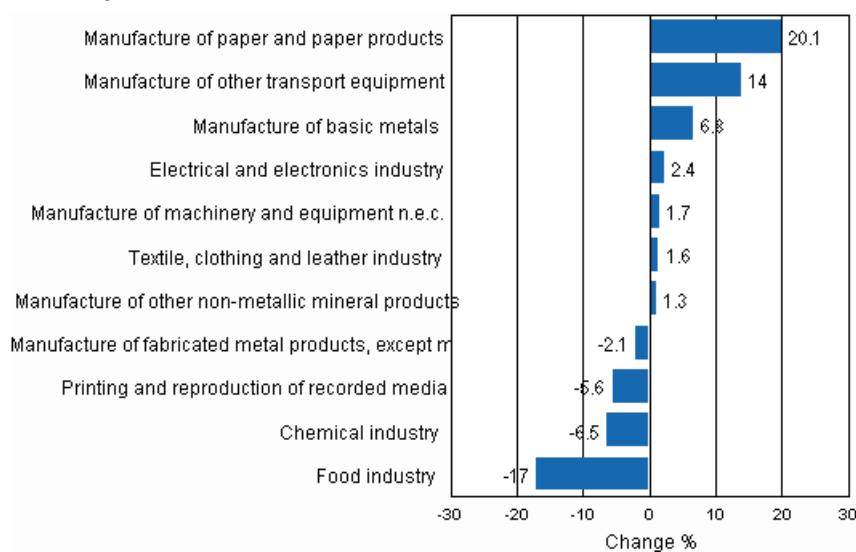
	Value added share	Original change percentage, 2010 APR / 2009 APR	Working day adj. change percentage, 2010 APR / 2009 APR	Seasonal adj. change percentage, 2010 APR / 2010 MAR
Industry (Tot 2008)				
Total industries	100,0	9,6	8,8	2,1
B Mining and quarrying	1,3	28,1	22,7	25,3
C Manufacturing	86,1	8,1	6,2	1,4
10 Manufacture of food products	5,0	-15,4	-15,9	-15,0
11 Manufacture of beverages	0,9	-20,4	-22,9	-14,5
13 Manufacture of textiles	0,6	9,2	4,2	-4,2
14 Manufacture of wearing apparel	0,4	9,4	6,9	-1,4
15 Manufacture of leather and related products	0,2	32,2	25,6	11,2
16 Manufacture of wood and of products of wood and cork, except furniture; manufacture of articles of straw and plaiting materials	4,6	22,3	15,8	0,3
17 Manufacture of paper and paper products	8,3	28,6	28,3	20,1
18 Printing and reproduction of recorded media	1,8	-5,4	-7,3	-5,6
23 Manufacture of other non-metallic mineral products	3,2	14,5	9,9	1,3
24 Manufacture of basic metals	6,1	33,9	34,8	6,8
25 Manufacture of fabricated metal products, except machinery and equipment	7,8	10,1	7,9	-2,1
28 Manufacture of machinery and equipment n.e.c.	9,7	4,8	3,5	1,7
29 Manufacture of motor vehicles, trailers and semi-trailers	1,2	48,2	38,5	20,8
30 Manufacture of other transport equipment	1,2	26,5	19,4	4,0
31 Manufacture of furniture	1,2	-3,3	-6,9	-7,2
32 Other manufacturing	1,1	-4,9	-1,6	10,2
33 Repair and installation of machinery and equipment	3,0	-1,0	-4,3	-0,7
D Electricity, gas, steam and air conditioning supply	11,6	20,0	20,1	1,3
E Water supply; sewerage, waste management and remediation activities	1,1	0,4	-0,8	-2,5
36 Water collection, treatment and supply	0,8	0,4	-0,2	-1,5
Main industrial groupings:				
Raw materials and productive goods	38,6	19,6	16,9	3,3
Investment goods	34,2	6,5	5,8	2,6
Durable goods	1,5	-3,3	-7,1	-5,9
Other consumer goods	10,5	-9,9	-9,8	-6,8
Special indices:				
10-11 Food industry	5,9	-16,2	-16,6	-17,0
13-15 Textile, clothing and leather industry	1,3	13,3	11,2	1,6
16-17 Forest industry	12,8	26,3	22,9	5,3
19-22 Chemical industry	10,6	-6,4	-8,2	-6,5
24-30 Metal industry	45,1	11,0	9,3	2,4
26-27 Electrical and electronics industry	19,2	3,9	4,1	2,4
25,28-30,33 Machinery and metal product industry	22,8	8,8	6,5	-2,3
29-30 Manufacture of transport equipment	2,4	38,9	34,9	14,0

Figures

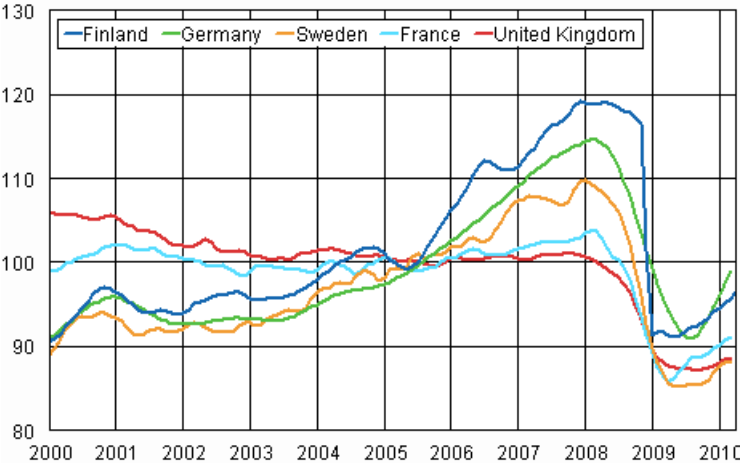
Working day adjusted change percentage of industrial output April 2009 /April 2010, TOL 2008



Seasonally adjusted change percentage of industrial output March 2010 /April 2010, TOL 2008



Trend of industrial output Finland, Germany, Sweden, France and United Kingdom (BCD) 2000 - 2010, 2005=100, TOL 2008



Suomen virallinen tilasto
Finlands officiella statistik
Official Statistics of Finland

Industry 2010

Inquiries

Kari Rautio (09) 1734 2479
Jukka Appelqvist (09) 1734 3391
Director in charge:
Hannele Orjala
volyyymi.indeksi@stat.fi
www.stat.fi