

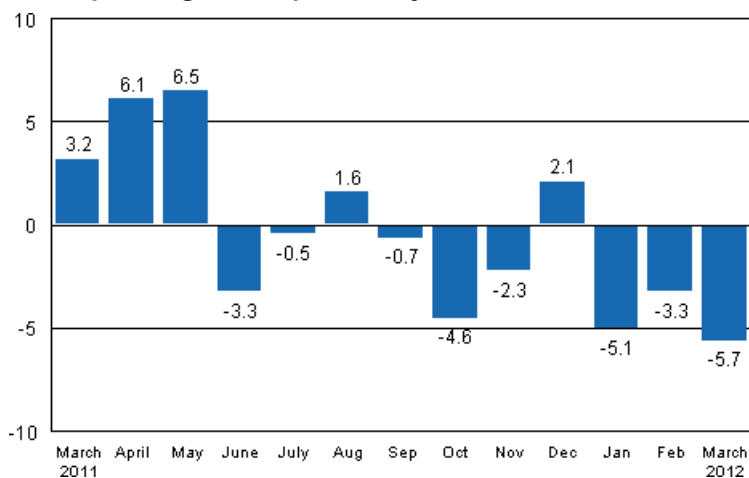
Volume index of industrial output

2012, March

Industrial output fell by 5.7 per cent year-on-year in March

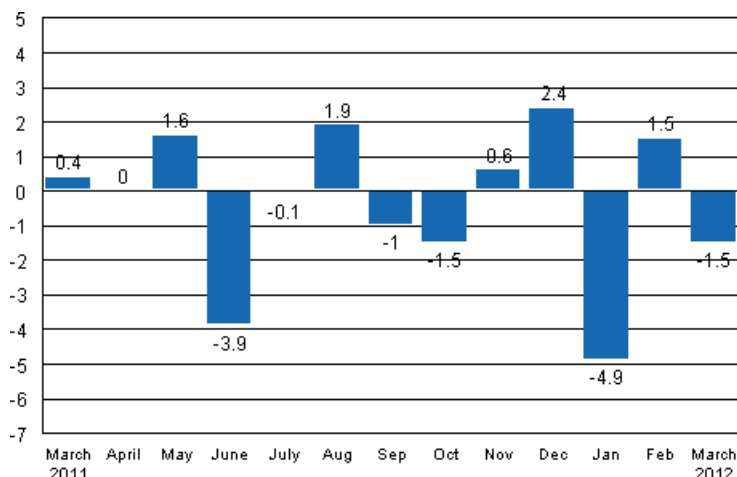
According to Statistics Finland, output of total industries adjusted for working days was 5.7 per cent lower in March 2012 than twelve months earlier. In the early part of the year, industrial output fell by nearly 5 per cent year-on-year.

Working day adjusted change in industrial output (BCDE) from corresponding month previous year, %, TOL 2008



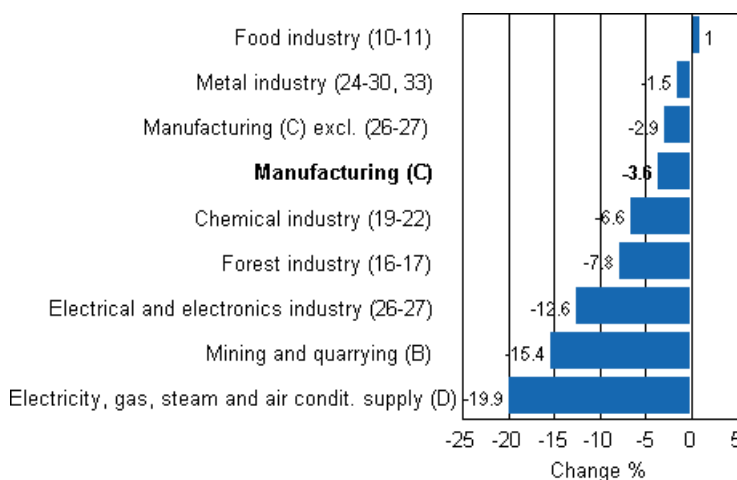
Seasonally adjusted output decreased in March by 1.5 per cent from February. In February, seasonally adjusted output increased by 1.5 per cent from the previous month. In January, seasonally adjusted output was 4.9 per cent lower than in December.

Seasonally adjusted change in industrial output (BCDE) from previous month, %, TOL 2008



Industrial output diminished in most of the main industries in March. The biggest drop of nearly 20 per cent was seen in the production of electricity. The decline also continued in March in mining and quarrying where output fell by 15.4 per cent. In the forest industry, output decreased by 7.8 per cent from one year ago. In the metal industry, output was 1.5 per cent down on March 2011. Among the main industries, growth was only seen in the food industry where it amounted to one per cent.

Working day adjusted change in industrial output by industry 3/2011-3/2012, %, TOL 2008



Capacity utilisation rate in manufacturing was 84.5 per cent in March, or 1.7 percentage points higher than one year earlier. In the forest industry, capacity utilisation rate was 87.9 per cent in March, or 1.6 percentage points lower than in March 2011. Capacity utilisation rate in the metal industry was 87.1 per cent in March, which was 4.4 percentage points higher than twelve months earlier.

Revised data for March 2012 will be published at 9 am on 8 June 2012 in connection with the release of industrial output data for April 2012. The revision was caused by the estimation used concerning industry 26 to 27 and the periodic tax return data used for enterprises with fewer than 50 employees. Because of the method used, seasonally adjusted figures for previous months may change even if the original figures do not become revised. The seasonally adjusted figures will also be adjusted for working days.

Contents

Industrial output fell by 5.7 per cent in March	4
---	---

Tables

Table 1. Volume index of industrial output, value added, original, working day adjusted, seasonally adjusted change percentage.....	5
---	---

Figures

Appendix figures

Appendix figure 1. Working day adjusted change percentage of industrial output March 2011 /March 2012, TOL 2008.....	6
--	---

Appendix figure 2. Seasonally adjusted change percentage of industrial output February 2012 /March 2012, TOL 2008.....	6
--	---

Appendix figure 3. Trend of industrial output Finland, Germany, Sweden, France and United Kingdom (BCD) 2000 - 2012, 2005=100, TOL 2008.....	7
--	---

Revisions in these statistics.....	8
------------------------------------	---

Industrial output fell by 5.7 per cent in March

According to Statistics Finland, output of total industries adjusted for working days was 5.7 per cent lower in March 2012 than twelve months earlier. Seasonally adjusted output decreased in March by 1.5 per cent from February.

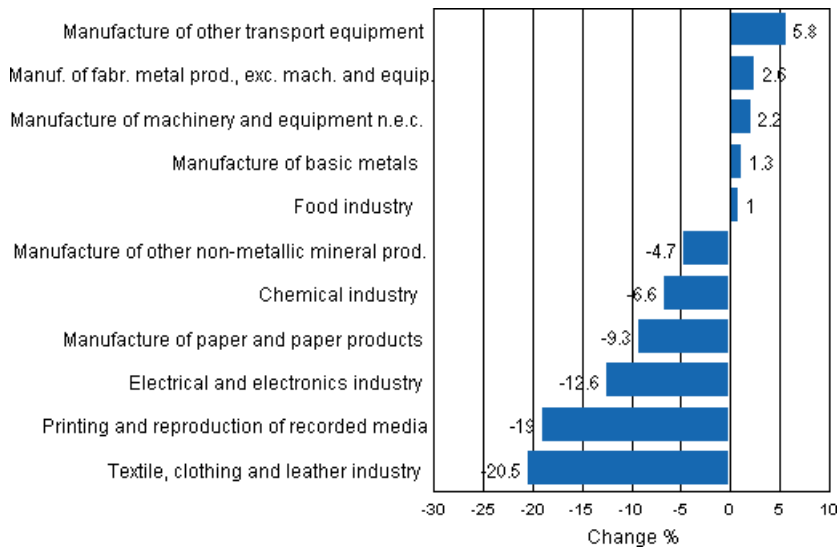
Adjusted for working days, industrial output (C) fell by 3.6 per cent in March from twelve months back. Seasonally adjusted output decreased by 1.4 per cent from the previous month.

Table 1. Volume index of industrial output, value added, original, working day adjusted, seasonally adjusted change percentage

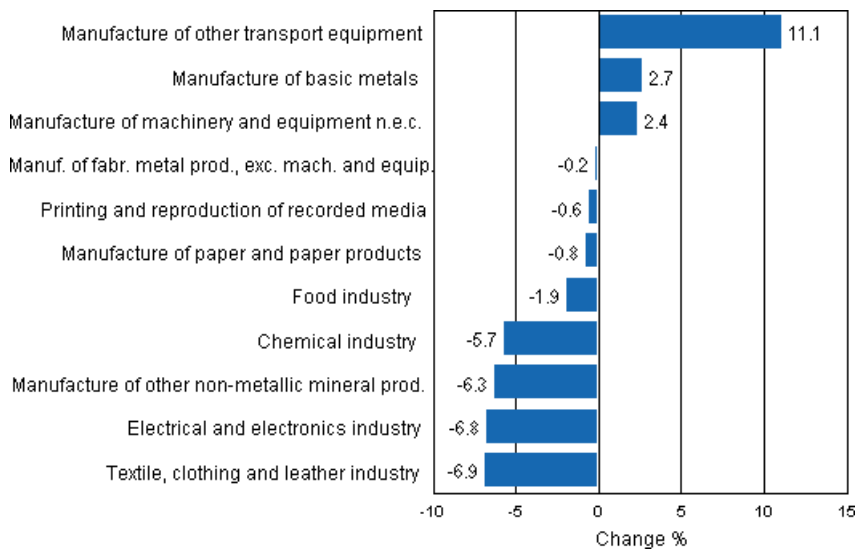
	Value added share	Original change percentage, 2012 MAR / 2011 MAR	Working day adj. change percentage, 2012 MAR / 2011 MAR	Seasonal adj. change percentage, 2012 MAR / 2012 FEB
Industry (Tol 2008)				
Total industries	100,0	-7,0	-5,7	-1,5
B Mining and quarrying	1,7	-21,5	-15,4	0,0
C Manufacturing	83,7	-4,7	-3,6	-1,4
10 Manufacture of food products	6,5	-3,1	-1,8	-3,0
11 Manufacture of beverages	1,3	13,2	13,2	4,2
13 Manufacture of textiles	0,6	-20,6	-21,1	-9,2
14 Manufacture of wearing apparel	0,4	-19,3	-17,3	-1,7
15 Manufacture of leather and related products	0,3	-18,3	-17,5	3,1
16 Manufacture of wood and of products of wood and cork, except furniture; manufacture of articles of straw and plaiting materials	3,9	-3,0	-1,6	-2,2
17 Manufacture of paper and paper products	9,8	-9,5	-9,3	-0,8
18 Printing and reproduction of recorded media	1,8	-21,0	-19,0	-0,6
23 Manufacture of other non-metallic mineral products	2,9	-4,5	-4,7	-6,3
24 Manufacture of basic metals	4,3	-0,7	1,3	2,7
25 Manufacture of fabricated metal products, except machinery and equipment	7,2	2,5	2,6	-0,2
28 Manufacture of machinery and equipment n.e.c.	11,2	2,2	2,2	2,4
29 Manufacture of motor vehicles, trailers and semi-trailers	1,1	-6,9	-7,4	16,8
30 Manufacture of other transport equipment	0,9	20,5	20,5	2,7
31 Manufacture of furniture	1,1	-3,1	-1,8	-3,8
32 Other manufacturing	0,8	5,6	5,6	-6,5
33 Repair and installation of machinery and equipment	3,3	13,6	13,6	7,5
D Electricity, gas, steam and air conditioning supply	12,0	-19,9	-19,9	-8,3
E Water supply; sewerage, waste management and remediation activities	2,7	2,1	3,2	-2,9
36 Water collection, treatment and supply	0,6	1,8	1,8	-2,5
Main industrial groupings:				
Raw materials and productive goods	39,0	-6,2	-5,0	-0,6
Investment goods	28,8	-1,4	-1,4	-0,7
Durable goods	1,4	-4,3	-2,3	-3,2
Other consumer goods	13,4	-11,5	-10,3	-14,3
Special indices:				
10-11 Food industry	7,8	-0,7	1,0	-1,9
13-15 Textile, clothing and leather industry	1,2	-19,8	-20,5	-6,9
16-17 Forest industry	13,6	-7,7	-7,8	-1,0
19-22 Chemical industry	13,1	-7,5	-6,6	-5,7
24-30 Metal industry	38,0	-3,8	-2,7	-0,6
26-27 Electrical and electronics industry	13,4	-14,1	-12,6	-6,8
25,28-30,33 Machinery and metal product industry	23,7	4,1	5,3	3,9
29-30 Manufacture of transport equipment	2,0	5,8	5,8	11,1

Appendix figures

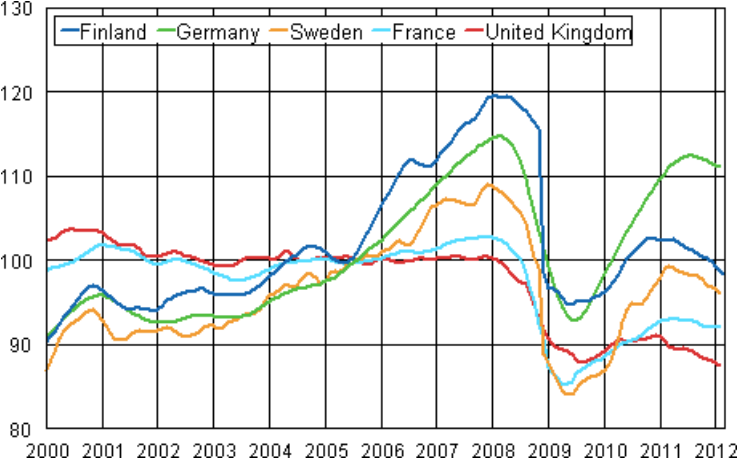
Appendix figure 1. Working day adjusted change percentage of industrial output March 2011 /March 2012, TOL 2008



Appendix figure 2. Seasonally adjusted change percentage of industrial output February 2012 /March 2012, TOL 2008



Appendix figure 3. Trend of industrial output Finland, Germany, Sweden, France and United Kingdom (BCD) 2000 - 2012, 2005=100, TOL 2008



Revisions in these statistics

The data of the statistics have become revised according to the table below. For more information about data revisions, see Section 3 of the quality description (only in Finnish).

Revisions to data on annual changes in main industries

Industry / time of publishing		2011 / 10	2011 / 11	2011 / 12	2012 / 01	2012 / 02
BCDE Total industry	1st release	-6,6	-2,9	-3,5	-4,8	-3,2
	Latest release (10.5.2012)	-5,5	-1,7	-3,3	-4,6	-3,3
	Revision	1,1	1,1	0,2	0,2	-0,1
C Manufacturing	1st release	-5,9	-1,3	0,3	-2,1	-2,0
	Latest release (10.5.2012)	-4,7	0,0	0,5	-1,8	-2,2
	Revision	1,3	1,3	0,2	0,3	-0,2
10-11 Food industry	1st release	-1,5	2,0	0,5	0,6	0,7
	Latest release (10.5.2012)	-1,1	2,7	0,6	1,0	0,5
	Revision	0,4	0,6	0,1	0,4	-0,3
16-17 Forest industry	1st release	-9,2	-9,1	-10,7	-15,8	-5,7
	Latest release (10.5.2012)	-9,3	-9,5	-10,8	-10,5	-5,9
	Revision	0,0	-0,4	-0,1	5,3	-0,2
19-22 Chemical industry	1st release	-0,5	-0,6	-4,0	1,4	5,3
	Latest release (10.5.2012)	-1,3	-2,2	-4,0	3,6	5,6
	Revision	-0,8	-1,6	0,0	2,2	0,3
24-30, 33 Metal industry	1st release	-6,9	0,3	5,2	1,8	-3,4
	Latest release (10.5.2012)	-4,5	3,2	5,7	-1,1	-4,0
	Revision	2,5	2,9	0,5	-2,9	-0,7
26-27 Electrical and electronics industry	1st release	-13,3	-13,9	-1,5	8,6	4,1
	Latest release (10.5.2012)	-6,8	-4,6	-1,5	-3,7	-0,8
	Revision	6,5	9,3	0,0	-12,2	-4,9
Manufacturing excl. electrical and electronics industry	1st release	-4,6	1,4	0,7	-4,0	-3,2
	Latest release (10.5.2012)	-4,3	1,0	1,0	-1,5	-2,5
	Revision	0,4	-0,4	0,3	2,5	0,7
D Electricity, gas, steam and air conditioning supply	1st release	-14,7	-15,8	-26,3	-18,2	-8,3
	Latest release (10.5.2012)	-14,7	-15,8	-26,3	-18,2	-8,3
	Revision	0,0	0,0	0,0	0,0	0,0

Inquiries

Kari Rautio 09 1734 2479

Director in charge:

Hannele Orjala

volyyimi.indeksi@stat.fi

www.stat.fi

Source: Volume Index of Industrial Output 2012, March. Statistics Finland