

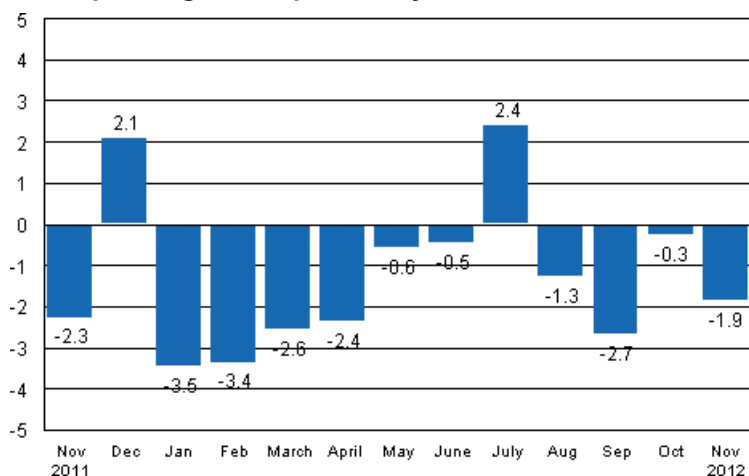
Volume index of industrial output

2012, November

Industrial output decreased by 1.9 per cent year-on-year in November

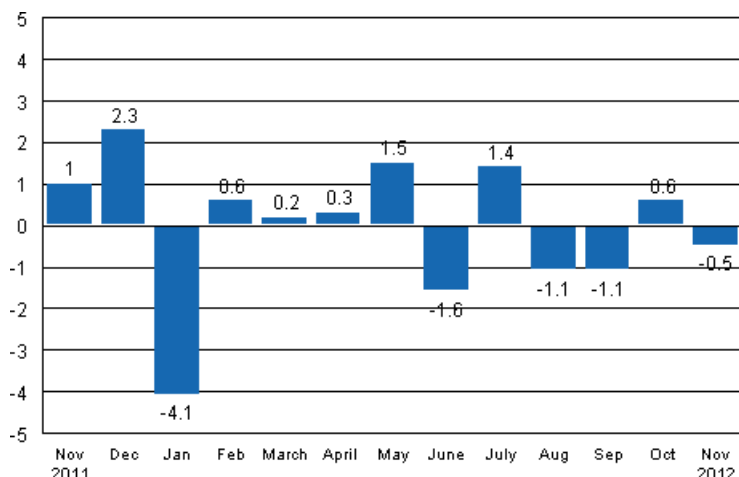
According to Statistics Finland, output of total industries adjusted for working days was 1.9 per cent lower in November 2012 than twelve months earlier. In the January to November period, industrial output adjusted for working days went down by 1.5 per cent from twelve months back.

Working day adjusted change in industrial output (BCDE) from corresponding month previous year, %, TOL 2008



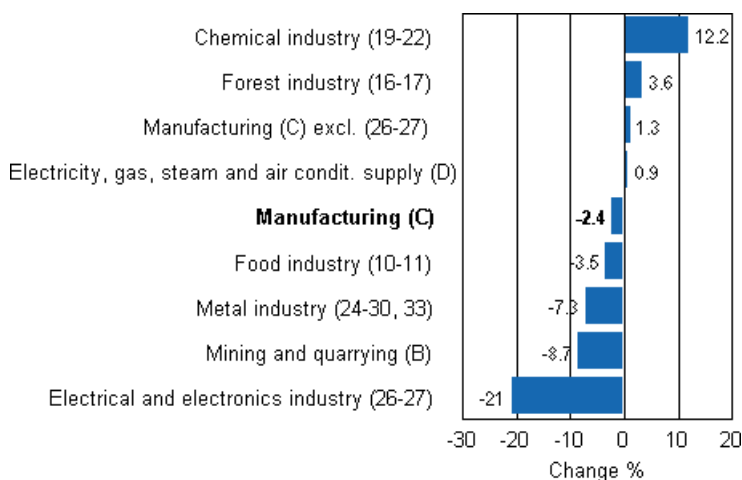
Seasonally adjusted output fell by 0.5 per cent in November from the month before. In October, seasonally adjusted output was 0.6 per cent higher than in September. In September and August, output declined by good one per cent from the reference period.

Seasonally adjusted change in industrial output (BCDE) from previous month, %, TOL 2008



Among the main industries, output decreased by most, or by 21 per cent, in the electrical and electronics industry. Adjusted for working days, output in mining and quarrying fell by 8.7 per cent from November 2011. Output went down by 7.3 per cent in the metal industry. Output in the chemical industry increased by 12.2 per cent from the previous year. In the forest industry, output was 3.6 per cent higher than one year ago.

Working day adjusted change in industrial output by industry 11/2011-11/2012, %, TOL 2008



In November, capacity utilisation rate in manufacturing (C) was 84 per cent, or 2.7 percentage points higher than one year earlier. In the forest industry, capacity utilisation rate was 88 per cent in November, or 4.4 percentage points higher than in November 2011. In the metal industry, capacity utilisation rate was 86.5 per cent in November, which was 6.1 percentage points higher than one year earlier. Capacity utilisation rate in the chemical industry decreased in November by 1.3 percentage points from the previous year to 82.6 per cent.

Revised data for November 2012 will be published at 9 am on 8 February 2013 in connection with the release of industrial output data for December 2012. The revision is influenced by the estimation used in the latest release which concerns the periodic tax return data used for enterprises with fewer than 50 employees. Because of the method used, seasonally adjusted figures for previous months may change even if the original figures do not become revised. The seasonally adjusted figures will also be adjusted for working days.

The base year 2010 will be utilised for the calculation of the Volume Index of Industrial Output starting from the statistics for January 2013. Data calculated with the new base year will be released for the first time on 8 March 2013.

Contents

Industrial output decreased by 1.9 per cent year-on-year in November	5
--	---

Tables

Table 1. Volume index of industrial output, value added, original, working day adjusted, seasonally adjusted change percentage.....	6
---	---

Figures

Appendix figures

Appendix figure 1. Working day adjusted change percentage of industrial output November 2011 /November 2012, TOL 2008.....	7
Appendix figure 2. Seasonally adjusted change percentage of industrial output October 2012 /November 2012, TOL 2008.....	7
Appendix figure 3. Trend of industrial output Finland, Germany, Sweden, France and United Kingdom (BCD) 2000 - 2012, 2005=100, TOL 2008.....	8

Revisions in these statistics.....	9
------------------------------------	---

Industrial output decreased by 1.9 per cent year-on-year in November

According to Statistics Finland, output of total industries adjusted for working days was 1.9 per cent lower in November 2012 than twelve months earlier. Seasonally adjusted output declined by 0.5 per cent in November from the month before.

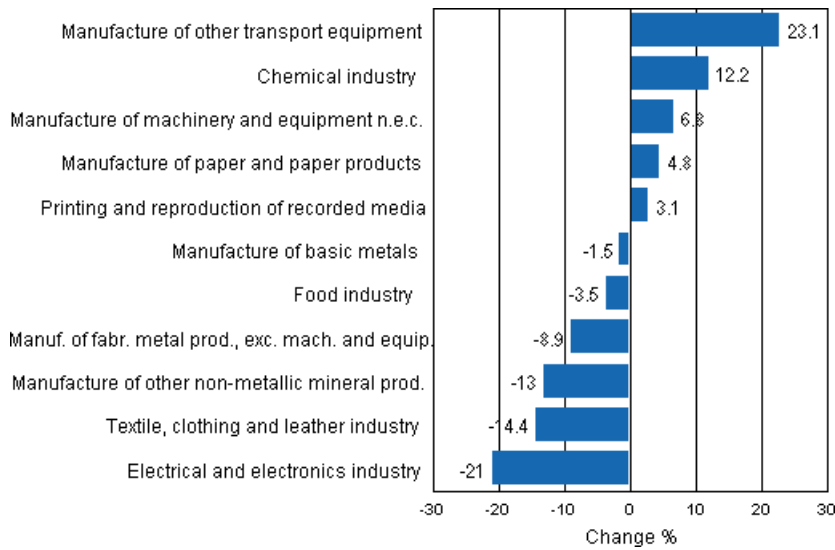
Adjusted for working days, industrial output (C) decreased by 2.4 per cent in November from one year back. In November, seasonally adjusted output went down by 0.5 per cent from October.

Table 1. Volume index of industrial output, value added, original, working day adjusted, seasonally adjusted change percentage

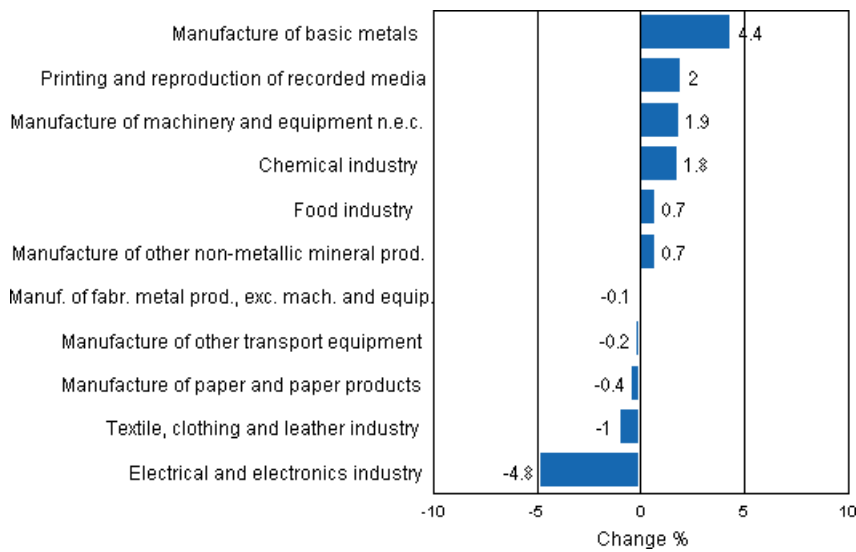
	Value added share	Original change percentage, 2012 NOV / 2011 NOV	Working day adj. change percentage, 2012 NOV / 2011 NOV	Seasonal adj. change percentage, 2012 NOV / 2012 OCT
Industry (Tol 2008)				
Total industries	100,0	-2,1	-1,9	-0,5
B Mining and quarrying	1,7	-5,1	-8,7	0,7
C Manufacturing	83,7	-2,5	-2,4	-0,5
10 Manufacture of food products	6,5	-3,3	-3,1	1,0
11 Manufacture of beverages	1,3	-5,7	-5,7	-0,4
13 Manufacture of textiles	0,6	-13,7	-13,5	-1,9
14 Manufacture of wearing apparel	0,4	-3,8	-4,4	0,5
15 Manufacture of leather and related products	0,3	-28,2	-27,4	-0,3
16 Manufacture of wood and of products of wood and cork, except furniture; manufacture of articles of straw and plaiting materials	3,9	-0,0	1,3	1,9
17 Manufacture of paper and paper products	9,8	5,2	4,8	-0,4
18 Printing and reproduction of recorded media	1,8	2,6	3,1	2,0
23 Manufacture of other non-metallic mineral products	2,9	-13,1	-13,0	0,7
24 Manufacture of basic metals	4,3	-2,1	-1,5	4,4
25 Manufacture of fabricated metal products, except machinery and equipment	7,2	-9,0	-8,9	-0,1
28 Manufacture of machinery and equipment n.e.c.	11,2	6,8	6,8	1,9
29 Manufacture of motor vehicles, trailers and semi-trailers	1,1	-17,2	-17,0	-9,4
30 Manufacture of other transport equipment	0,9	94,0	94,0	1,8
31 Manufacture of furniture	1,1	-5,0	-4,3	4,7
32 Other manufacturing	0,8	9,3	9,3	-0,9
33 Repair and installation of machinery and equipment	3,3	-17,7	-17,7	-4,4
D Electricity, gas, steam and air conditioning supply	12,0	0,9	0,9	-3,6
E Water supply; sewerage, waste management and remediation activities	2,7	6,6	6,0	4,0
36 Water collection, treatment and supply	0,6	8,0	8,0	3,1
Main industrial groupings:				
Raw materials and productive goods	39,0	-1,1	-0,9	-0,2
Investment goods	28,8	-8,3	-8,3	-1,8
Durable goods	1,4	-5,6	-4,5	2,9
Other consumer goods	13,4	8,7	9,4	1,2
Special indices:				
10-11 Food industry	7,8	-3,7	-3,5	0,7
13-15 Textile, clothing and leather industry	1,2	-14,6	-14,4	-1,0
16-17 Forest industry	13,6	3,6	3,6	0,2
19-22 Chemical industry	13,1	11,4	12,2	1,8
24-30 Metal industry	38,0	-6,5	-6,6	-1,5
26-27 Electrical and electronics industry	13,4	-21,1	-21,0	-4,8
25,28-30,33 Machinery and metal product industry	23,7	-0,4	-0,5	-0,7
29-30 Manufacture of transport equipment	2,0	23,1	23,1	-0,2

Appendix figures

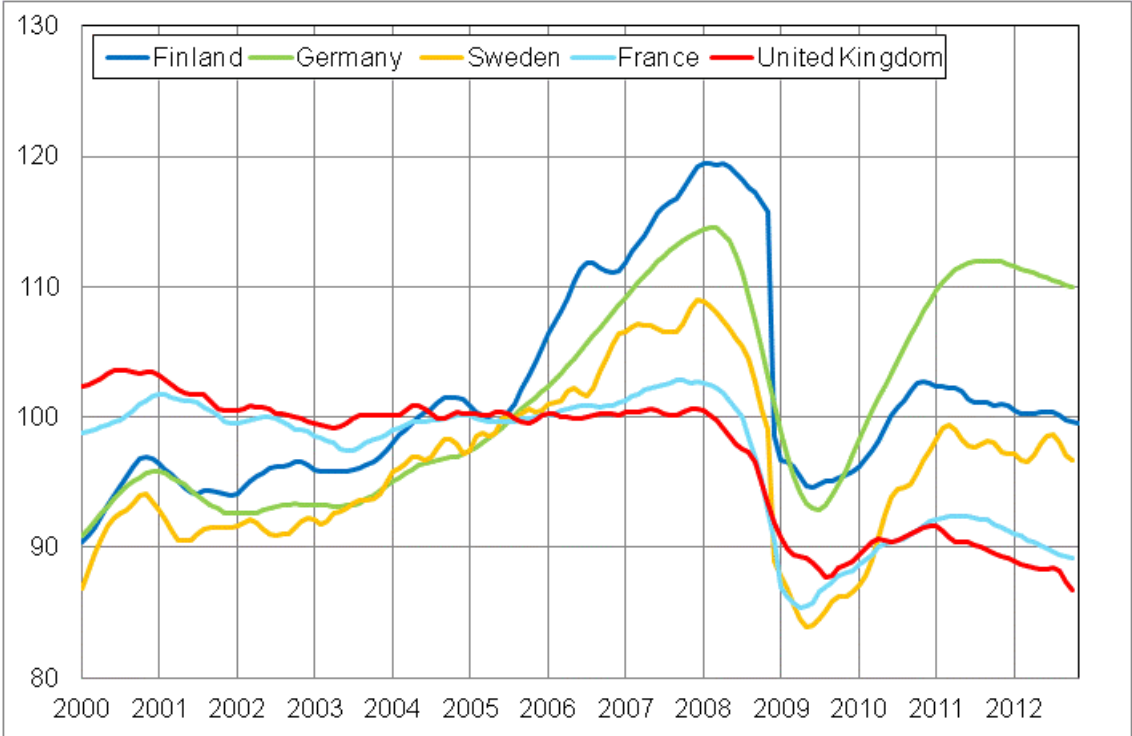
Appendix figure 1. Working day adjusted change percentage of industrial output November 2011 /November 2012, TOL 2008



Appendix figure 2. Seasonally adjusted change percentage of industrial output October 2012 /November 2012, TOL 2008



Appendix figure 3. Trend of industrial output Finland, Germany, Sweden, France and United Kingdom (BCD) 2000 - 2012, 2005=100, TOL 2008



Revisions in these statistics

The data of the statistics have become revised according to the table below. For more information about data revisions, see Section 3 of the quality description (only in Finnish).

Revisions to data on annual changes in main industries

Main industries and Statistical reference month		Annual change (%)		Revision (%-point)
		1st release (%)	Latest release (10.1.2013) (%)	
BCDE Total industry	2012 / 06	-0,9	-0,3	0,6
	2012 / 07	2,5	3,7	1,2
	2012 / 08	-1,0	-1,0	0,0
	2012 / 09	-5,4	-6,4	-1,0
	2012 / 10	3,4	3,9	0,5
C Manufacturing	2012 / 06	-0,0	0,6	0,6
	2012 / 07	3,1	4,2	1,1
	2012 / 08	-0,6	-0,6	0,0
	2012 / 09	-6,7	-7,7	-1,0
	2012 / 10	3,2	3,7	0,5
D Electricity, gas, steam and air conditioning supply	2012 / 06	5,4	5,4	0,0
	2012 / 07	6,4	6,4	0,0
	2012 / 08	1,5	1,5	0,0
	2012 / 09	7,6	7,6	0,0
	2012 / 10	6,8	6,8	0,0
10-11 Food industry	2012 / 06	0,7	2,2	1,5
	2012 / 07	4,4	2,9	-1,5
	2012 / 08	-1,4	-1,2	0,2
	2012 / 09	-7,6	-7,9	-0,3
	2012 / 10	3,6	3,6	0,0
16-17 Forest industry	2012 / 06	-4,8	-3,7	1,1
	2012 / 07	-3,6	-1,9	1,7
	2012 / 08	1,2	0,7	-0,5
	2012 / 09	-2,1	-3,8	-1,7
	2012 / 10	4,4	5,2	0,8
19-22 Chemical industry	2012 / 06	3,6	1,9	-1,7
	2012 / 07	8,5	8,3	-0,2
	2012 / 08	5,3	5,7	0,4
	2012 / 09	-15,3	-16,0	-0,7
	2012 / 10	8,0	8,9	0,9
24-30, 33 Metal industry	2012 / 06	-0,5	0,9	1,4
	2012 / 07	5,0	6,3	1,3
	2012 / 08	-3,1	-3,0	0,1
	2012 / 09	-3,9	-5,0	-1,1
	2012 / 10	1,4	1,6	0,2
26-27 Electrical and electronics industry	2012 / 06	-1,3	-2,7	-1,4
	2012 / 07	18,1	15,7	-2,4
	2012 / 08	-8,4	-8,3	0,1
	2012 / 09	-14,4	-14,4	0,0
	2012 / 10	-6,1	-8,7	-2,6
Manufacturing excl. electrical and electronics industry	2012 / 06	0,2	1,2	1,0
	2012 / 07	0,5	2,2	1,7
	2012 / 08	0,8	0,8	0,0
	2012 / 09	-5,3	-6,5	-1,2
	2012 / 10	5,0	6,2	1,2

Suomen virallinen tilasto
Finlands officiella statistik
Official Statistics of Finland

Industry 2012

Inquiries

Kari Rautio 09 1734 2479

Salla Simola 09 1734 3308

Director in charge:

Hannele Orjala

volyymi.indeksi@stat.fi

www.stat.fi

Source: Volume Index of Industrial Output 2012, November. Statistics Finland