

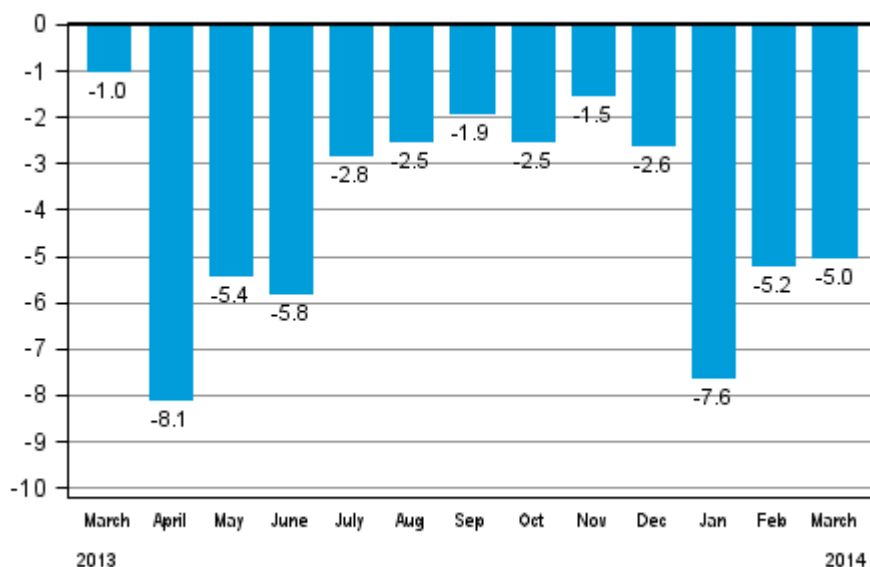
Volume index of industrial output

2014, March

Industrial output decreased by 5.0 per cent year-on-year in March

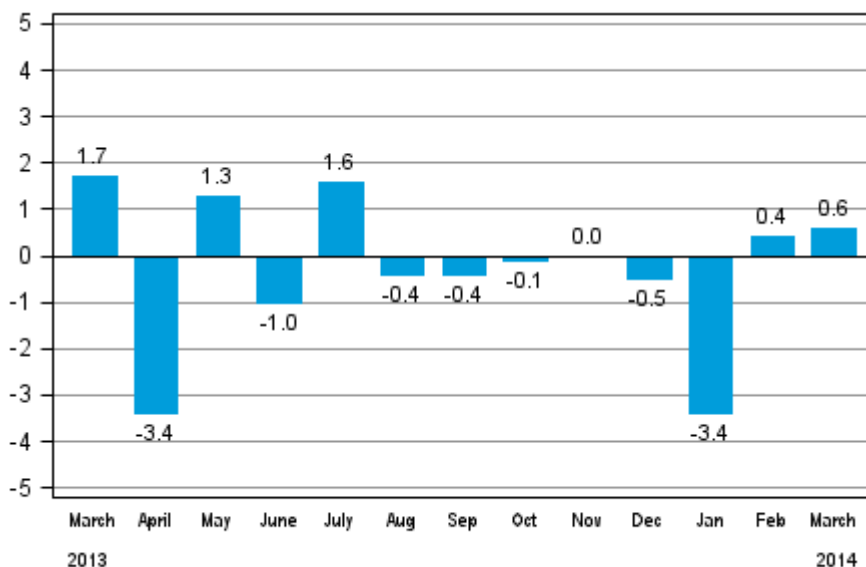
According to Statistics Finland, output of total industries adjusted for working days was 5.0 per cent lower in March 2014 than twelve months earlier. In the January to March period, industrial output adjusted for working days went down by 5.8 per cent compared with the corresponding period in 2013. Seasonally adjusted industrial output has also grown in two successive months. New orders in manufacturing that anticipate the development of industrial output has grown in the early part of the year.

Working day adjusted change in total industrial output (BCDE) from corresponding month previous year, %, TOL 2008



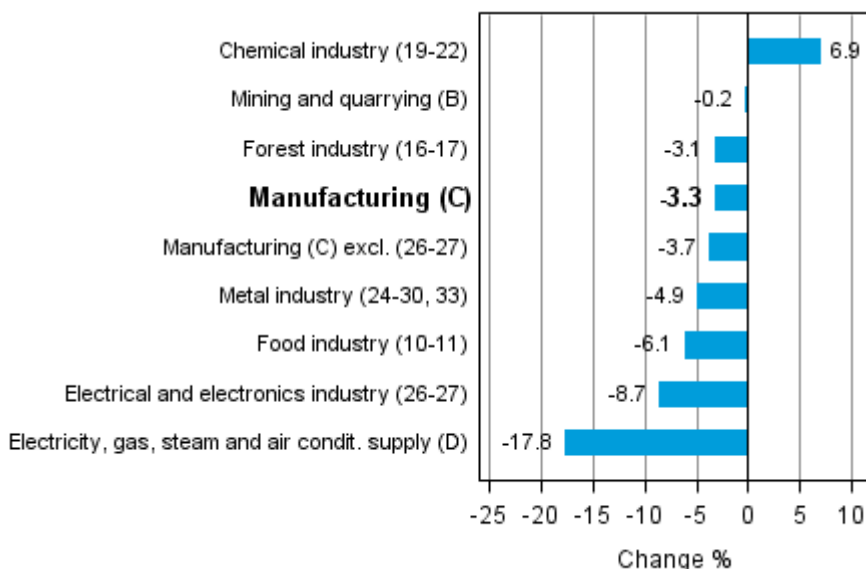
Seasonally adjusted output increased in March by 0.6 per cent from February. In February, seasonally adjusted output was 0.4 per cent higher than in January. In January, output decreased by 3.4 per cent from the previous month.

Seasonally adjusted change in total industrial output (BCDE) from previous month, %, TOL 2008



Industrial output diminished in almost all main industries in March. The biggest drop of nearly 18 per cent was seen in the production of electricity. In the food industry, output decreased by 6.1 per cent. In the metal industry, output was 4,9 per cent down in March on twelve months back. Output in the chemical industry was in March 6.9 per cent up on twelve months back.

Working day adjusted change in industrial output by industry 3/2013-3/2014, %, TOL 2008



Capacity utilisation rate in manufacturing (C) was 80.1 per cent in March, or 0.1 percentage points higher than one year earlier. In the forest industry, capacity utilisation rate was 86.9 per cent in March, or 2.6 percentage points higher than in March 2013. In the metal industry, capacity utilisation rate was 80.1 per cent in March, which was 0.6 percentage points lower than one year earlier.

Revised data for March 2014 will be published at 9 am on 10 June 2014 in connection with the release of industrial output data for April 2014. The revision is influenced by the estimation used in the latest release, which concerns the periodic tax return data used for enterprises with fewer than 50 employees. Because of the method used, seasonally adjusted figures for previous months may change even if the original figures do not become revised. The seasonally adjusted figures will also be adjusted for working days.

Contents

Industrial output decreased by 5.0 per cent year-on-year in March	5
---	---

Tables

Table 1. Volume index of industrial output, value added, original, working day adjusted, seasonally adjusted change percentage.....	6
---	---

Figures

Appendix figures

Appendix figure 1. Working day adjusted change percentage of industrial output March 2013 /March 2014, TOL 2008.....	7
Appendix figure 2. Seasonally adjusted change percentage of industrial output February 2014 /March 2014, TOL 2008.....	7
Appendix figure 3. Seasonally adjusted industrial output Finland, Germany, Sweden, France and United Kingdom (BCD) 2000 - 2014, 2010=100, TOL 2008.....	8

Revisions in these statistics.....	9
------------------------------------	---

Industrial output decreased by 5.0 per cent year-on-year in March

According to Statistics Finland, output of total industries adjusted for working days was 5.0 per cent lower in March 2014 than twelve months earlier. Seasonally adjusted output increased by 0.6 per cent in March from February.

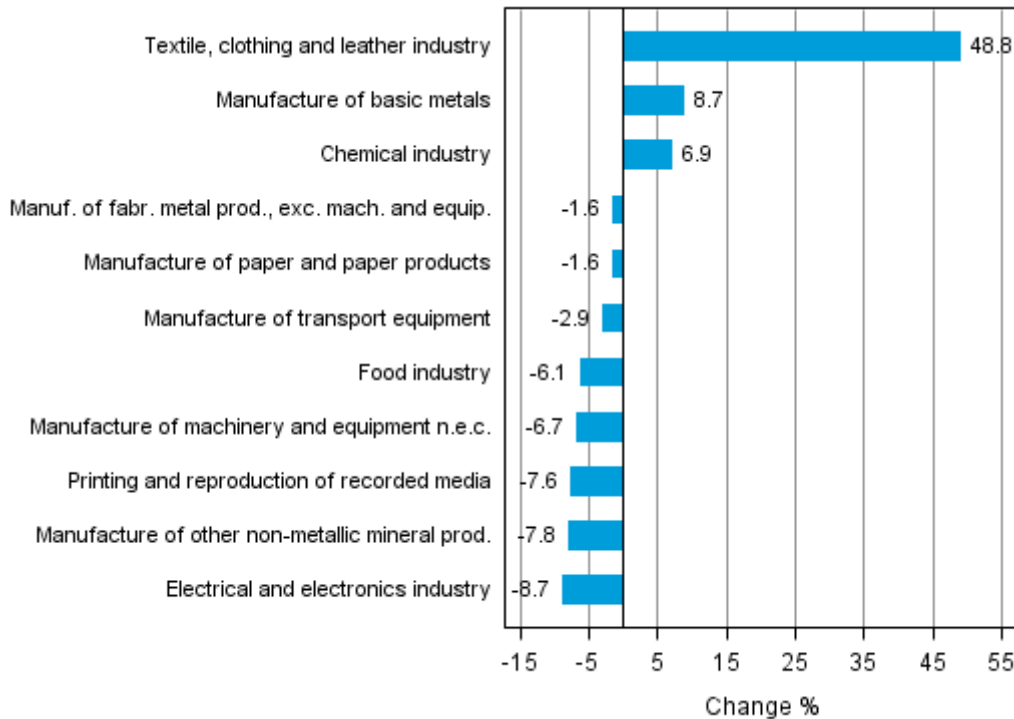
Adjusted for working days, industrial output (C) decreased by 3.3 per cent in March from one year back. Seasonally adjusted output increased in March by 0.9 per cent from February.

Table 1. Volume index of industrial output, value added, original, working day adjusted, seasonally adjusted change percentage

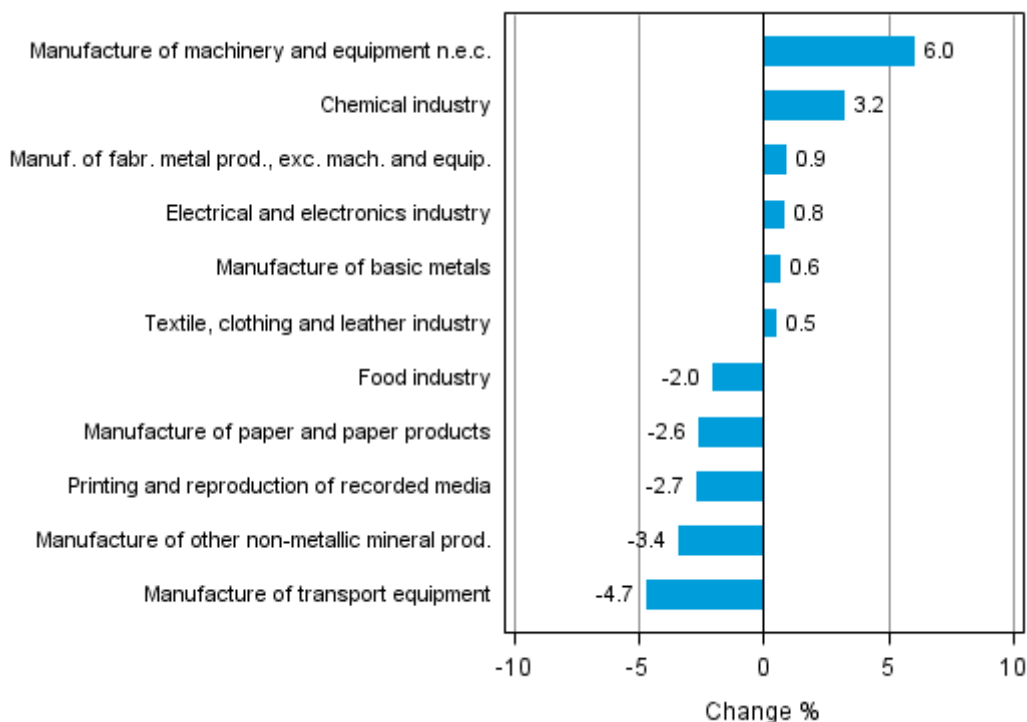
	Value added share	Original change percentage, 2014 MAR / 2013 MAR	Working day adj. change percentage, 2014 MAR / 2013 MAR	Seasonal adj. change percentage, 2014 MAR / 2014 FEB
Industry (Tol 2008)				
Total industries	100,0	-2,2	-5,0	0,6
B Mining and quarrying	2,0	-0,5	-0,2	1,0
C Manufacturing	83,9	0,0	-3,3	0,9
10 Manufacture of food products	7,1	-2,7	-4,7	-1,7
11 Manufacture of beverages	1,3	-8,5	-7,9	-4,4
13 Manufacture of textiles	0,6	143,1	125,3	29,8
14 Manufacture of wearing apparel	0,4	-13,6	-21,4	-10,7
15 Manufacture of leather and related products	0,3	13,2	-2,3	-0,6
16 Manufacture of wood and of products of wood and cork, except furniture; manufacture of articles of straw and plaiting materials	3,7	5,2	-4,5	-2,3
17 Manufacture of paper and paper products	9,5	-1,6	-1,6	-2,6
18 Printing and reproduction of recorded media	1,9	-2,3	-7,6	-2,7
23 Manufacture of other non-metallic mineral products	3,7	2,3	-7,8	-3,4
24 Manufacture of basic metals	3,4	7,1	8,7	0,6
25 Manufacture of fabricated metal products, except machinery and equipment	8,2	7,7	-1,6	0,9
28 Manufacture of machinery and equipment n.e.c.	13,3	-2,2	-6,7	6,0
29 Manufacture of motor vehicles, trailers and semi-trailers	1,4	4,9	-14,3	-15,9
30 Manufacture of other transport equipment	1,5	5,1	-4,6	-2,2
31 Manufacture of furniture	1,2	-7,4	-16,8	-3,0
32 Other manufacturing	0,9	-52,1	-52,1	6,3
33 Repair and installation of machinery and equipment	3,3	-16,6	-21,9	-9,2
D Electricity, gas, steam and air conditioning supply	10,7	-17,8	-17,8	-2,9
E Water supply; sewerage, waste management and remediation activities	3,4	5,1	1,1	3,6
36 Water collection, treatment and supply	1,8	4,2	2,1	2,6
Main industrial groupings:				
Raw materials and productive goods	40,4	1,6	-2,4	-0,8
Investment goods	26,3	-5,9	-7,3	6,7
Durable goods	1,6	-9,7	-17,4	-5,3
Other consumer goods	14,8	7,5	2,7	0,7
Special indices:				
10-11 Food industry	8,4	-3,6	-6,1	-2,0
13-15 Textile, clothing and leather industry	1,3	67,4	48,8	0,5
16-17 Forest industry	13,3	0,2	-3,1	-3,0
19-22 Chemical industry	13,7	6,9	6,9	3,2
24-30 Metal industry	36,2	-0,8	-3,4	2,8
26-27 Electrical and electronics industry	8,5	-10,6	-8,7	0,8
25,28-30,33 Machinery and metal product industry	27,6	-0,5	-5,2	6,3
29-30 Manufacture of transport equipment	2,8	5,0	-2,9	-4,7

Appendix figures

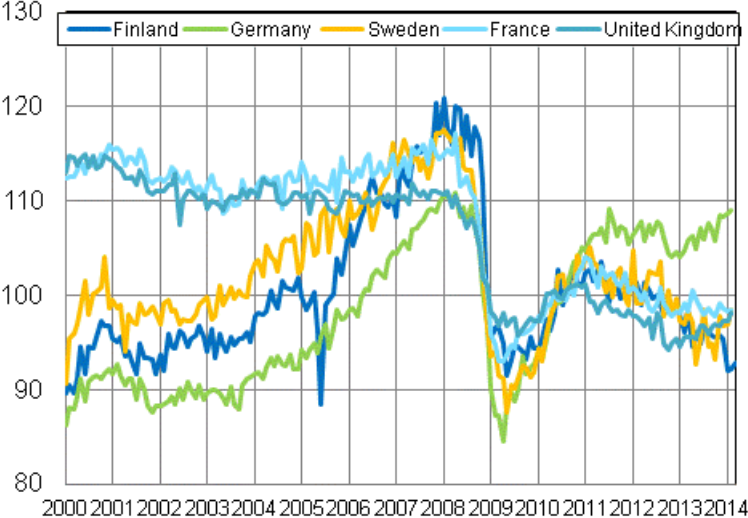
Appendix figure 1. Working day adjusted change percentage of industrial output March 2013 /March 2014, TOL 2008



Appendix figure 2. Seasonally adjusted change percentage of industrial output February 2014 /March 2014, TOL 2008



Appendix figure 3. Seasonally adjusted industrial output Finland, Germany, Sweden, France and United Kingdom (BCD) 2000 - 2014, 2010=100, TOL 2008



Revisions in these statistics

The data of the original series of industrial output have become revised according to the table below. For more information about data revisions, see Section 3 of the quality description (only in Finnish).

Revisions to data on annual changes in main industries

Main industries and Statistical reference month		Annual change (%)		Revision (%-point)
		1st release (%)	Latest release (09.05.2014) (%)	
BCDE Total industry	2013 / 10	-2,3	-1,8	0,5
	2013 / 11	-2,1	-2,8	-0,7
	2013 / 12	-2,1	0,7	2,8
	2014 / 01	-6,2	-6,3	-0,1
	2014 / 02	-5,4	-5,2	0,2
C Manufacturing	2013 / 10	-2,5	-1,7	0,8
	2013 / 11	-2,5	-3,0	-0,5
	2013 / 12	0,3	3,3	3,0
	2014 / 01	-7,7	-7,8	-0,1
	2014 / 02	-4,9	-4,6	0,3
D Electricity, gas, steam and air conditioning supply	2013 / 10	-2,3	-2,3	0,0
	2013 / 11	-1,6	-1,8	-0,2
	2013 / 12	-11,4	-11,4	0,0
	2014 / 01	1,6	1,6	0,0
	2014 / 02	-9,8	-9,8	0,0
10-11 Food industry	2013 / 10	0,8	0,8	0,0
	2013 / 11	-3,6	-3,4	0,2
	2013 / 12	7,2	6,5	-0,7
	2014 / 01	-11,1	-10,8	0,3
	2014 / 02	1,5	2,1	0,6
16-17 Forest industry	2013 / 10	2,7	2,6	-0,1
	2013 / 11	-3,3	-2,9	0,4
	2013 / 12	7,2	7,3	0,1
	2014 / 01	-3,0	-3,0	0,0
	2014 / 02	1,6	1,7	0,1
19-22 Chemical industry	2013 / 10	4,3	3,7	-0,6
	2013 / 11	-3,5	-4,6	-1,1
	2013 / 12	-3,6	-5,5	-1,9
	2014 / 01	-3,3	-3,1	0,2
	2014 / 02	-3,8	-3,5	0,3
24-30, 33 Metal industry	2013 / 10	-4,9	-3,3	1,6
	2013 / 11	-1,0	-0,5	0,5
	2013 / 12	-0,3	6,1	6,4
	2014 / 01	-9,0	-9,7	-0,7
	2014 / 02	-9,4	-9,3	0,1
26-27 Electrical and electronics industry	2013 / 10	-13,9	-13,0	0,9
	2013 / 11	-11,2	-15,1	-3,9
	2013 / 12	-16,0	-10,1	5,9
	2014 / 01	-19,0	-18,4	0,6
	2014 / 02	-10,9	-10,8	0,1

Main industries and Statistical reference month		Annual change (%)		Revision (%-point)
		1st release (%)	Latest release (09.05.2014) (%)	
Manufacturing excl. electrical and electronics industry	2013 / 10	-1,0	-0,5	0,5
	2013 / 11	-1,3	-1,7	-0,4
	2013 / 12	2,9	4,8	1,9
	2014 / 01	-6,3	-6,5	-0,2
	2014 / 02	-4,2	-3,9	0,3

Inquiries

Kari Rautio 09 1734 2479

Heidi Myllylä 09 1734 3792

Director in charge:

Hannele Orjala

volyymi.indeksi@stat.fi

www.stat.fi

Source: Volume Index of Industrial Output 2014, March. Statistics Finland