

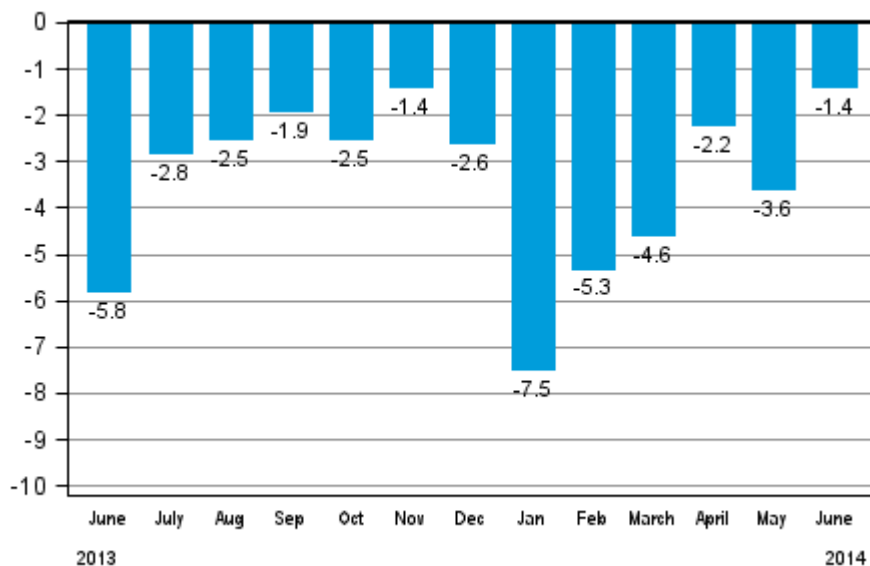
# Volume index of industrial output

2014, June

## Industrial output decreased by 1.4 per cent year-on-year in June

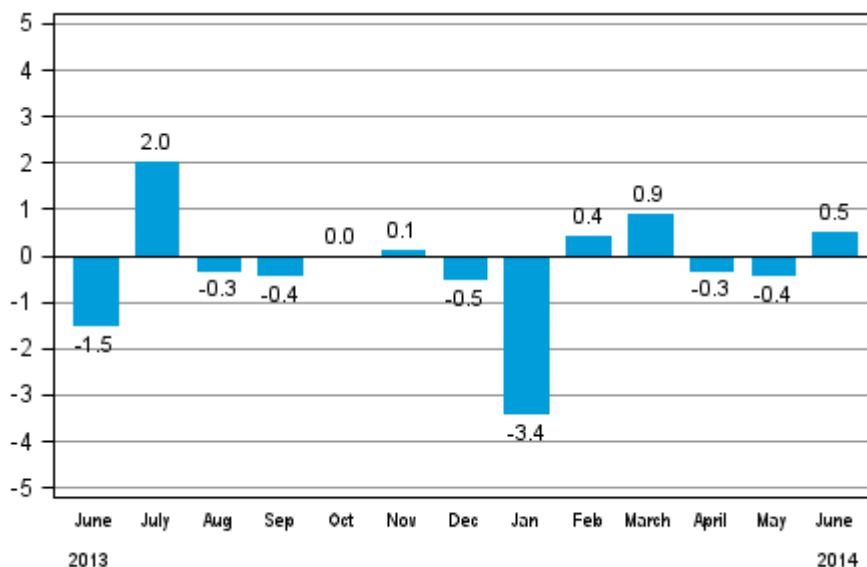
According to Statistics Finland, output of total industries adjusted for working days was 1.4 per cent lower in June 2014 compared to June 2013. In the January to June period, industrial output adjusted for working days went down by 4.0 per cent compared with the corresponding period in 2013.

### Working day adjusted change in total industrial output (BCDE) from corresponding month previous year, %, TOL 2008



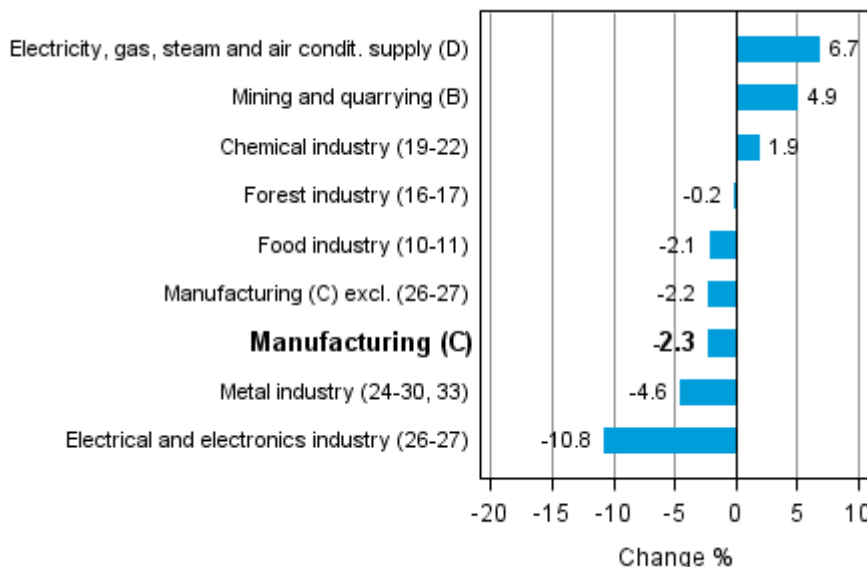
Seasonally adjusted increased in June by 0.5 per cent compared with the previous month. In May, seasonally adjusted output was 0.4 per cent lower than in April. In April, output fell by 0.3 per cent from the previous month.

**Seasonally adjusted change in total industrial output (BCDE) from previous month, %, TOL 2008**



Industrial output diminished in several main industries in June. In the electrical and electronics industry, output decreased most, by 10.8 per cent. In the food industry, output went down by 2.1 per cent. The largest growth of 6.7 per cent was recorded in production of electricity. In the chemical industry, output went up by 1.9 per cent in June.

**Working day adjusted change in industrial output by industry 6/2013-6/2014, %, TOL 2008**



Capacity utilisation rate in manufacturing (C) was 80.2 per cent in June, or 0.8 percentage points higher than one year earlier. In the forest industry, capacity utilisation rate was 81.1 per cent in June, or 1.6 percentage points higher than in June 2013. In the metal industry, capacity utilisation rate was 82.1 per cent in June, which was 1.4 percentage points higher than one year earlier.

Revised data for June 2014 will be published at 9 am on 10 September 2014 in connection with the release of industrial output data for July 2014. The revision is influenced by the estimation used in the latest release which concerns the periodic tax return data used for enterprises with fewer than 50 employees. Because of the method used, seasonally adjusted figures for previous months may change even if the original figures do not become revised. The seasonally adjusted figures will also be adjusted for working days.

# Contents

Industrial output decreased by 1.4 per cent year-on-year in June .....	5
--	---

## Tables

Table 1. Volume index of industrial output, value added, original, working day adjusted, seasonally adjusted change percentage.....	6
---	---

## Figures

### Appendix figures

Appendix figure 1. Working day adjusted change percentage of industrial output June 2013 /June 2014, TOL 2008.....	7
--	---

Appendix figure 2. Seasonally adjusted change percentage of industrial output May 2014 /June 2014, TOL 2008...	7
--	---

Appendix figure 3. Seasonally adjusted industrial output Finland, Germany, Sweden, France and United Kingdom (BCD) 2000 - 2014, 2010=100, TOL 2008.....	8
---	---

Revisions in these statistics.....	9
------------------------------------	---

## ***Industrial output decreased by 1.4 per cent year-on-year in June***

According to Statistics Finland, output of total industries adjusted for working days was 1.4 per cent lower in June 2014 compared to June 2013. Seasonally adjusted output increased by 0.5 per cent in June from May.

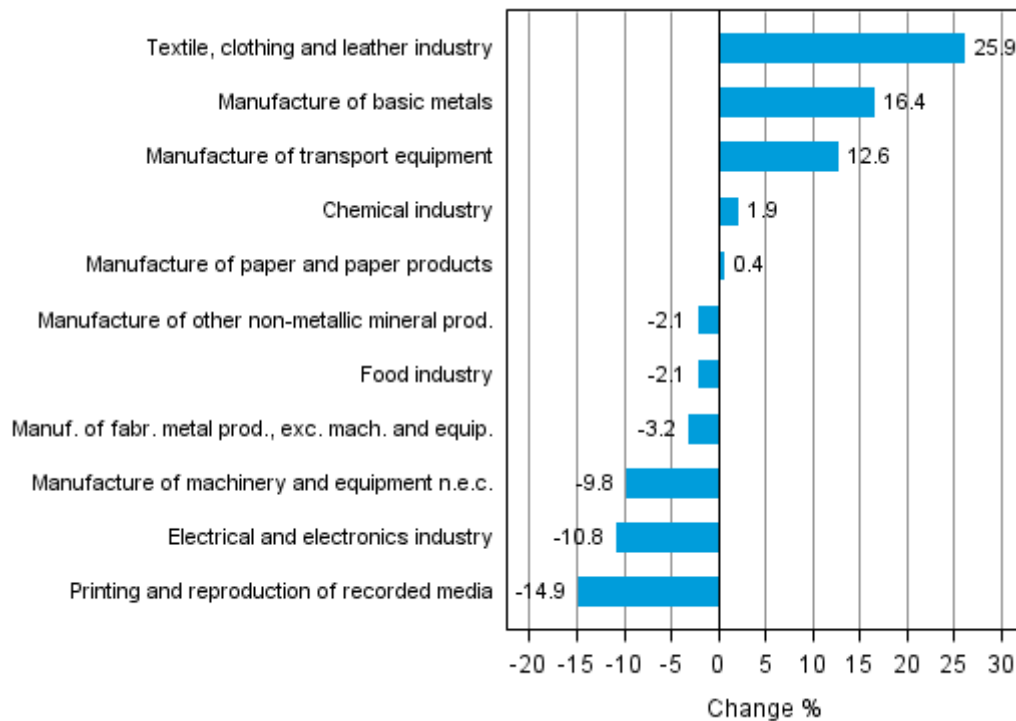
Adjusted for working days, industrial output (C) decreased by 2.3 per cent in June from one year back. Seasonally adjusted output increased in June by 0.3 per cent compared with the previous month.

**Table 1. Volume index of industrial output, value added, original, working day adjusted, seasonally adjusted change percentage**

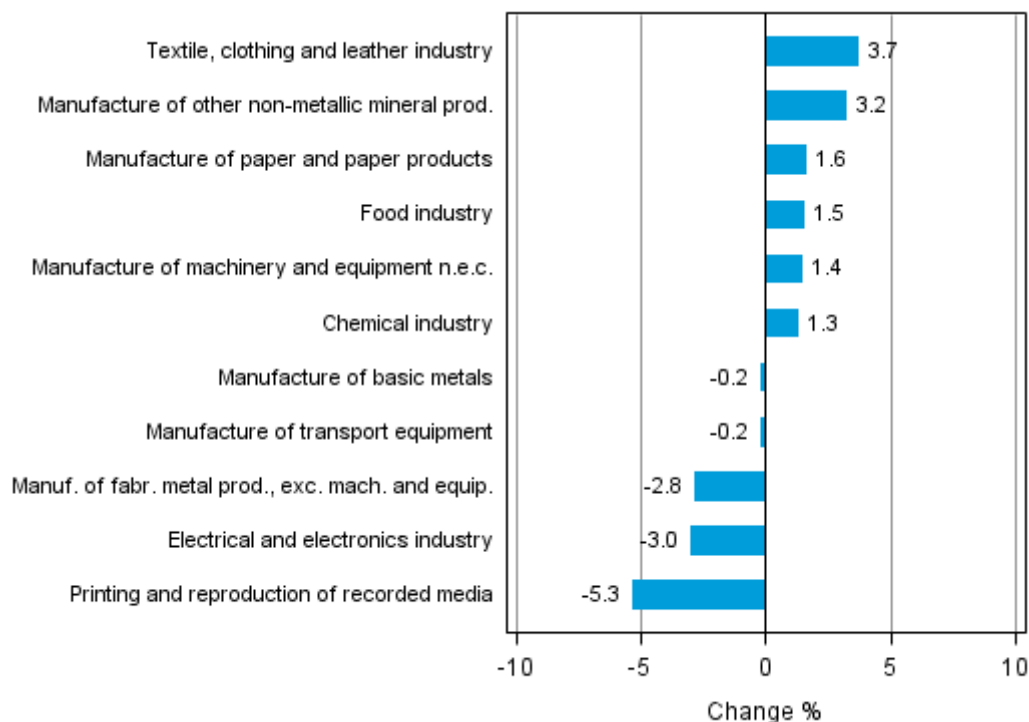
	Value added share	Original change percentage, 2014 JUN / 2013 JUN	Working day adj. change percentage, 2014 JUN / 2013 JUN	Seasonal adj. change percentage, 2014 JUN / 2014 MAY
Industry (Tol 2008)				
Total industries	100,0	-0,7	-1,4	0,5
B Mining and quarrying	2,0	9,5	4,9	-6,7
C Manufacturing	83,9	-1,6	-2,3	0,3
10 Manufacture of food products	7,1	-2,2	-3,5	1,0
11 Manufacture of beverages	1,3	6,3	3,6	-2,0
13 Manufacture of textiles	0,6	71,8	66,9	28,6
14 Manufacture of wearing apparel	0,4	-5,4	-5,4	4,6
15 Manufacture of leather and related products	0,3	-1,4	-1,4	0,1
16 Manufacture of wood and of products of wood and cork, except furniture; manufacture of articles of straw and plaiting materials	3,7	0,9	-0,2	0,8
17 Manufacture of paper and paper products	9,5	0,4	0,4	1,6
18 Printing and reproduction of recorded media	1,9	-13,5	-14,9	-5,3
23 Manufacture of other non-metallic mineral products	3,7	-0,7	-2,1	3,2
24 Manufacture of basic metals	3,4	16,4	16,4	-0,2
25 Manufacture of fabricated metal products, except machinery and equipment	8,2	-3,2	-3,2	-2,8
28 Manufacture of machinery and equipment n.e.c.	13,3	-8,8	-9,8	1,4
29 Manufacture of motor vehicles, trailers and semi-trailers	1,4	62,7	62,7	6,6
30 Manufacture of other transport equipment	1,5	-32,1	-32,1	-1,5
31 Manufacture of furniture	1,2	0,3	0,3	2,6
32 Other manufacturing	0,9	-15,7	-18,7	5,4
33 Repair and installation of machinery and equipment	3,3	1,8	0,5	2,3
D Electricity, gas, steam and air conditioning supply	10,7	6,8	6,7	-1,1
E Water supply; sewerage, waste management and remediation activities	3,4	-2,8	-3,7	-0,6
36 Water collection, treatment and supply	1,8	-3,9	-3,9	0,6
Main industrial groupings:				
Raw materials and productive goods	40,4	0,9	-0,1	-0,1
Investment goods	26,3	-6,4	-6,2	2,2
Durable goods	1,6	-4,3	-6,7	-0,4
Other consumer goods	14,8	3,2	3,2	2,6
Special indices:				
10-11 Food industry	8,4	-0,7	-2,1	1,5
13-15 Textile, clothing and leather industry	1,3	33,1	25,9	3,7
16-17 Forest industry	13,3	0,5	-0,2	1,1
19-22 Chemical industry	13,7	1,9	1,9	1,3
24-30 Metal industry	36,2	-4,3	-5,0	-0,8
26-27 Electrical and electronics industry	8,5	-11,1	-10,8	-3,0
25,28-30,33 Machinery and metal product industry	27,6	-3,7	-4,1	1,3
29-30 Manufacture of transport equipment	2,8	12,6	12,6	-0,2

## Appendix figures

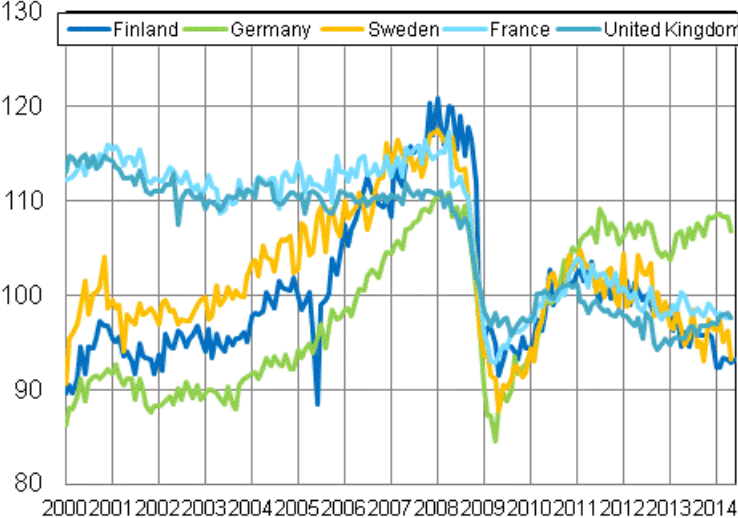
**Appendix figure 1. Working day adjusted change percentage of industrial output June 2013 /June 2014, TOL 2008**



**Appendix figure 2. Seasonally adjusted change percentage of industrial output May 2014 /June 2014, TOL 2008**



**Appendix figure 3. Seasonally adjusted industrial output Finland, Germany, Sweden, France and United Kingdom (BCD) 2000 - 2014, 2010=100, TOL 2008**





## Revisions in these statistics

The data of the original series of industrial output have become revised according to the table below. For more information about data revisions, see Section 3 of the quality description (only in Finnish).

### Revisions to data on annual changes in main industries

Main industries and Statistical reference month		Annual change (%)		Revision (%-point)
		1st release (%)	Latest release (08.08.2014) (%)	
BCDE Total industry	2014 / 01	-6,2	-6,3	-0,1
	2014 / 02	-5,4	-5,3	0,1
	2014 / 03	-2,2	-1,9	0,3
	2014 / 04	-5,2	-5,1	0,1
	2014 / 05	-4,6	-5,2	-0,6
C Manufacturing	2014 / 01	-7,7	-7,8	-0,1
	2014 / 02	-4,9	-4,7	0,2
	2014 / 03	0,0	0,5	0,5
	2014 / 04	-4,3	-4,1	0,2
	2014 / 05	-4,6	-5,3	-0,7
D Electricity, gas, steam and air conditioning supply	2014 / 01	1,6	1,6	0,0
	2014 / 02	-9,8	-9,8	0,0
	2014 / 03	-17,8	-17,8	0,0
	2014 / 04	-16,4	-16,8	-0,4
	2014 / 05	-1,7	-1,7	0,0
10-11 Food industry	2014 / 01	-11,1	-10,9	0,2
	2014 / 02	1,5	1,8	0,3
	2014 / 03	-3,6	-3,6	0,0
	2014 / 04	5,3	5,4	0,1
	2014 / 05	-7,6	-7,6	0,0
16-17 Forest industry	2014 / 01	-3,0	-2,6	0,4
	2014 / 02	1,6	2,2	0,6
	2014 / 03	0,2	1,7	1,5
	2014 / 04	-3,8	-4,6	-0,8
	2014 / 05	-4,1	-4,4	-0,3
19-22 Chemical industry	2014 / 01	-3,3	-3,2	0,1
	2014 / 02	-3,8	-3,7	0,1
	2014 / 03	6,9	7,5	0,6
	2014 / 04	4,4	4,3	-0,1
	2014 / 05	-2,4	-3,5	-1,1
24-30, 33 Metal industry	2014 / 01	-9,0	-9,8	-0,8
	2014 / 02	-9,4	-9,6	-0,2
	2014 / 03	-2,1	-2,2	-0,1
	2014 / 04	-9,0	-8,4	0,6
	2014 / 05	-4,1	-4,9	-0,8
26-27 Electrical and electronics industry	2014 / 01	-19,0	-18,4	0,6
	2014 / 02	-10,9	-10,8	0,1
	2014 / 03	-10,6	-10,6	0,0
	2014 / 04	-15,1	-14,7	0,4
	2014 / 05	-4,9	-4,4	0,5

Main industries and Statistical reference month		Annual change (%)		Revision (%-point)
		1st release (%)	Latest release (08.08.2014) (%)	
Manufacturing excl. electrical and electronics industry	2014 / 01	-6,3	-6,5	-0,2
	2014 / 02	-4,2	-4,0	0,2
	2014 / 03	1,3	1,8	0,5
	2014 / 04	-3,0	-2,8	0,2
	2014 / 05	-4,6	-5,4	-0,8

### Inquiries

Kari Rautio 029 551 2479

Heidi Myllylä 029 551 3792

Director in charge:

Hannele Orjala

[volyyimi.indeksi@stat.fi](mailto:volyyimi.indeksi@stat.fi)

[www.stat.fi](http://www.stat.fi)

Source: Volume Index of Industrial Output 2014, June. Statistics Finland