

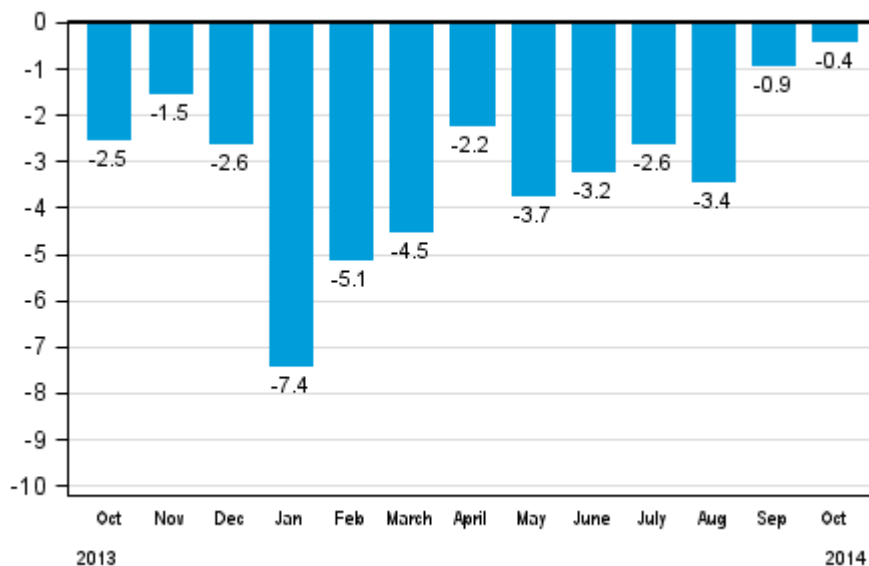
Volume index of industrial output

2014, October

Industrial output decreased by 0.4 per cent year-on-year in October

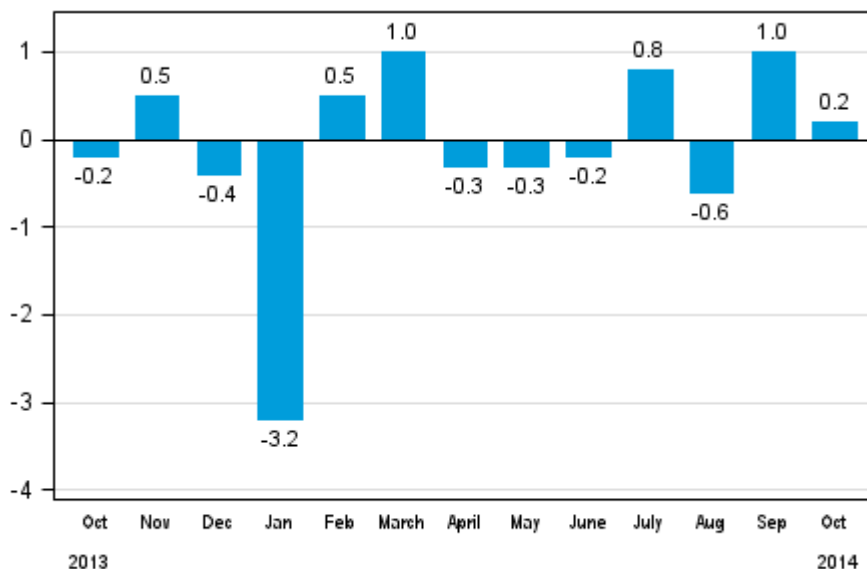
According to Statistics Finland, output of total industries adjusted for working days was 0.4 per cent lower in October 2014 compared to October 2013. In the January to October period, industrial output adjusted for working days went down by 3.2 per cent compared with the corresponding period in 2013

Working day adjusted change in total industrial output (BCDE) from corresponding month previous year, %, TOL 2008



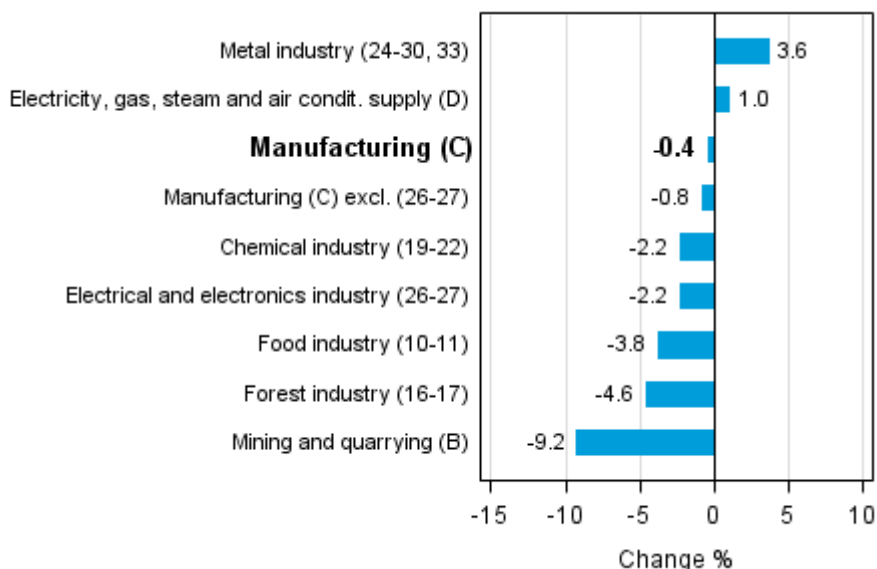
In October, seasonally adjusted output went up by 0.2 per cent from September. In September, seasonally adjusted output grew by 1.0 per cent. In August, seasonally adjusted output decreased by 0.6 per cent from the previous month.

Seasonally adjusted change in total industrial output (BCDE) from previous month, %, TOL 2008



Industrial output diminished in several main industries. Mining and quarrying declined most, by good nine per cent. In the chemical industry, output decreased by 2.2 per cent in October year-on-year. Adjusted for working days, output in the food industry decreased by 3.8 per cent year-on-year. In the metal industry, output increased by 3.6 per cent in October.

Working day adjusted change in industrial output by industry 10/2013-10/2014, %, TOL 2008



In October, capacity utilisation rate in manufacturing (C) was 80.7 per cent, or 1,8 percentage points lower than one year earlier. In the forest industry, capacity utilisation rate was 84.7 per cent in October, or 3.4 percentage points lower than in October 2013. In the metal industry, capacity utilisation rate was 83.0 per cent in October, which was 0.3 percentage points higher than one year earlier.

Revised data for October 2014 will be published at 9 am on 9 January 2015 in connection with the release of industrial output data for November 2014. The revision is influenced by the estimation used in the latest release, which concerns the periodic tax return data used for enterprises with fewer than 50 employees. Because of the method used, seasonally adjusted figures for previous months may change even if the original figures do not become revised. The seasonally adjusted figures will also be adjusted for working days.

Contents

Industrial output decreased by 0.4 per cent year-on-year in October	5
---	---

Tables

Table 1. Volume index of industrial output, value added, original, working day adjusted, seasonally adjusted change percentage.....	6
---	---

Figures

Appendix figures

Appendix figure 1. Working day adjusted change percentage of industrial output October 2013 /October 2014, TOL 2008.....	7
Appendix figure 2. Seasonally adjusted change percentage of industrial output September 2014 /October 2014, TOL 2008.....	7
Appendix figure 3. Seasonally adjusted industrial output Finland, Germany, Sweden, France and United Kingdom (BCD) 2000 - 2014, 2010=100, TOL 2008.....	8

Revisions in these statistics.....	9
------------------------------------	---

Industrial output decreased by 0.4 per cent year-on-year in October

According to Statistics Finland, output of total industries adjusted for working days was 0.4 per cent lower in October 2014 compared to October 2013. Seasonally adjusted output grew by 0.2 per cent in October from September.

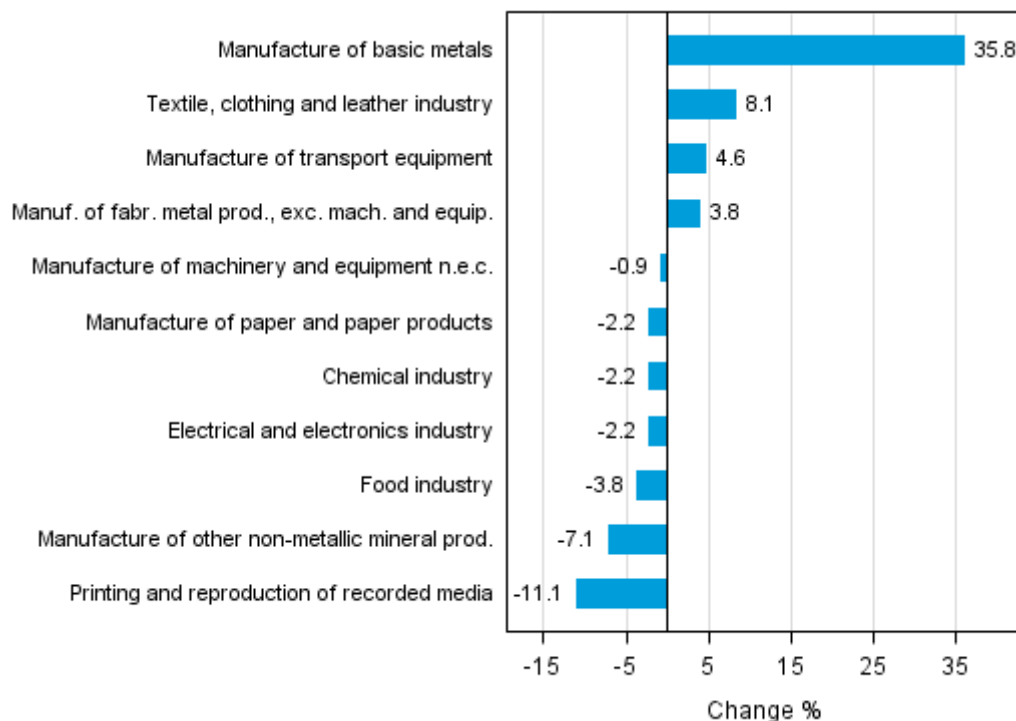
Adjusted for working days, industrial output (C) went down by 0.4 per cent in October from one year back. In October, seasonally adjusted output fell by 0.1 per cent from September.

Table 1. Volume index of industrial output, value added, original, working day adjusted, seasonally adjusted change percentage

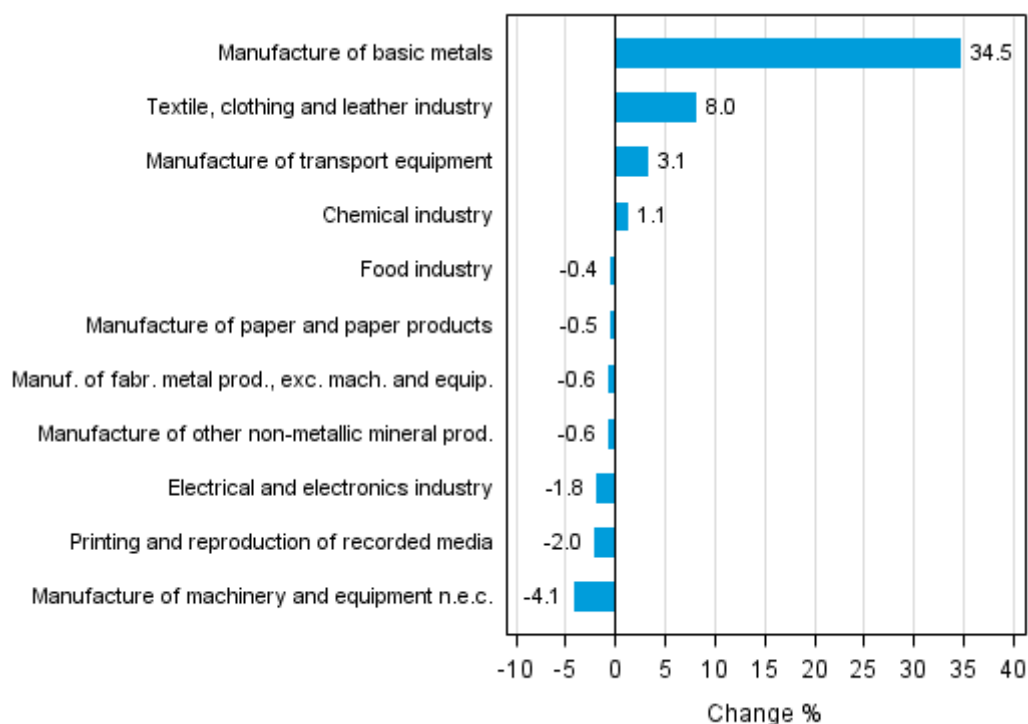
	Value added share	Original change percentage, 2014 OCT / 2013 OCT	Working day adj. change percentage, 2014 OCT / 2013 OCT	Seasonal adj. change percentage, 2014 OCT / 2014 SEP
Industry (Tol 2008)				
Total industries	100,0	-1,0	-0,4	0,2
B Mining and quarrying	2,0	-9,4	-9,2	8,0
C Manufacturing	83,9	-1,0	-0,4	-0,1
10 Manufacture of food products	7,1	-4,2	-3,6	0,5
11 Manufacture of beverages	1,3	-6,4	-6,5	-7,1
13 Manufacture of textiles	0,6	29,1	30,3	48,4
14 Manufacture of wearing apparel	0,4	-14,4	-14,4	-2,2
15 Manufacture of leather and related products	0,3	-4,5	-4,5	-1,3
16 Manufacture of wood and of products of wood and cork, except furniture; manufacture of articles of straw and plaiting materials	3,7	-9,9	-8,9	-3,0
17 Manufacture of paper and paper products	9,5	-2,2	-2,2	-0,5
18 Printing and reproduction of recorded media	1,9	-11,6	-11,1	-2,0
23 Manufacture of other non-metallic mineral products	3,7	-7,9	-7,1	-0,6
24 Manufacture of basic metals	3,4	34,6	35,8	34,5
25 Manufacture of fabricated metal products, except machinery and equipment	8,2	3,8	3,8	-0,6
28 Manufacture of machinery and equipment n.e.c.	13,3	-1,0	-0,9	-4,1
29 Manufacture of motor vehicles, trailers and semi-trailers	1,4	22,9	22,9	-1,4
30 Manufacture of other transport equipment	1,5	-11,4	-11,4	-2,2
31 Manufacture of furniture	1,2	-5,4	-5,4	-3,4
32 Other manufacturing	0,9	-23,7	-23,7	-3,4
33 Repair and installation of machinery and equipment	3,3	4,2	4,2	2,6
D Electricity, gas, steam and air conditioning supply	10,7	1,0	1,0	2,1
E Water supply; sewerage, waste management and remediation activities	3,4	-2,3	-2,3	-0,8
36 Water collection, treatment and supply	1,8	-1,8	-1,8	-0,7
Main industrial groupings:				
Raw materials and productive goods	40,4	0,1	0,5	0,9
Investment goods	26,3	-0,8	-0,0	-2,0
Durable goods	1,6	2,6	4,4	-0,4
Other consumer goods	14,8	-2,1	-2,1	-0,1
Special indices:				
10-11 Food industry	8,4	-4,5	-3,8	-0,4
13-15 Textile, clothing and leather industry	1,3	7,9	8,1	8,0
16-17 Forest industry	13,3	-4,6	-4,6	-1,5
19-22 Chemical industry	13,7	-2,2	-2,2	1,1
24-30 Metal industry	36,2	3,0	3,7	-0,4
26-27 Electrical and electronics industry	8,5	-3,3	-2,2	-1,8
25,28-30,33 Machinery and metal product industry	27,6	1,7	2,3	-1,1
29-30 Manufacture of transport equipment	2,8	4,6	4,6	3,1

Appendix figures

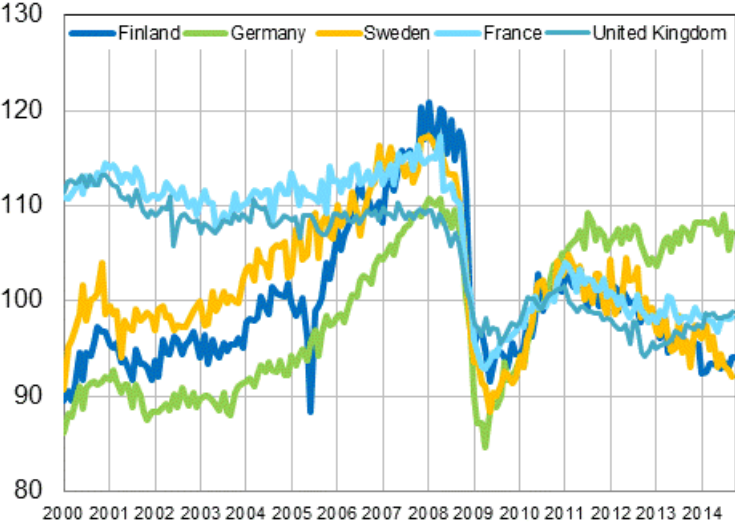
Appendix figure 1. Working day adjusted change percentage of industrial output October 2013 /October 2014, TOL 2008



Appendix figure 2. Seasonally adjusted change percentage of industrial output September 2014 /October 2014, TOL 2008



Appendix figure 3. Seasonally adjusted industrial output Finland, Germany, Sweden, France and United Kingdom (BCD) 2000 - 2014, 2010=100, TOL 2008



Revisions in these statistics

The data of the original series of industrial output have become revised according to the table below. For more information about data revisions, see Section 3 of the quality description (only in Finnish).

Revisions to data on annual changes in main industries

Main industries and Statistical reference month		Annual change (%)		Revision (%-point)
		1st release (%)	Latest release (10.12.2014) (%)	
BCDE Total industry	2014 / 05	-4,6	-5,2	-0,6
	2014 / 06	-0,7	-2,6	-1,9
	2014 / 07	-1,9	-1,8	0,1
	2014 / 08	-5,6	-5,6	0,0
	2014 / 09	1,3	2,0	0,7
C Manufacturing	2014 / 05	-4,6	-5,3	-0,7
	2014 / 06	-1,6	-3,7	-2,1
	2014 / 07	-2,4	-2,3	0,1
	2014 / 08	-5,7	-5,7	0,0
	2014 / 09	1,9	2,8	0,9
D Electricity, gas, steam and air conditioning supply	2014 / 05	-1,7	-1,7	0,0
	2014 / 06	6,8	6,8	0,0
	2014 / 07	-4,9	-4,9	0,0
	2014 / 08	-2,1	-2,0	0,1
	2014 / 09	0,5	0,5	0,0
10-11 Food industry	2014 / 05	-7,6	-7,6	0,0
	2014 / 06	-0,7	-0,7	0,0
	2014 / 07	-3,8	-3,6	0,2
	2014 / 08	-4,2	-4,5	-0,3
	2014 / 09	4,6	2,8	-1,8
16-17 Forest industry	2014 / 05	-4,1	-4,3	-0,2
	2014 / 06	0,5	1,1	0,6
	2014 / 07	-3,0	-3,2	-0,2
	2014 / 08	-4,9	-4,8	0,1
	2014 / 09	-0,7	-0,5	0,2
19-22 Chemical industry	2014 / 05	-2,4	-3,5	-1,1
	2014 / 06	1,9	1,7	-0,2
	2014 / 07	7,1	6,8	-0,3
	2014 / 08	-7,1	-7,3	-0,2
	2014 / 09	-5,5	-4,4	1,1
24-30, 33 Metal industry	2014 / 05	-4,1	-4,9	-0,8
	2014 / 06	-3,8	-8,2	-4,4
	2014 / 07	-4,9	-4,4	0,5
	2014 / 08	-6,1	-5,9	0,2
	2014 / 09	6,9	8,5	1,6
26-27 Electrical and electronics industry	2014 / 05	-4,9	-4,7	0,2
	2014 / 06	-11,1	-9,6	1,5
	2014 / 07	-2,2	-1,2	1,0
	2014 / 08	-2,0	-0,8	1,2
	2014 / 09	2,4	3,9	1,5

Main industries and Statistical reference month		Annual change (%)		Revision (%-point)
		1st release (%)	Latest release (10.12.2014) (%)	
Manufacturing excl. electrical and electronics industry	2014 / 05	-4,6	-5,4	-0,8
	2014 / 06	-0,4	-3,0	-2,6
	2014 / 07	-2,5	-2,4	0,1
	2014 / 08	-6,1	-6,2	-0,1
	2014 / 09	1,9	2,7	0,8

Inquiries

Kari Rautio 029 551 2479

Heidi Myllylä 029 551 3792

Director in charge:

Hannele Orjala

volyyimi.indeksi@stat.fi

www.stat.fi

Source: Volume Index of Industrial Output 2014, October. Statistics Finland