

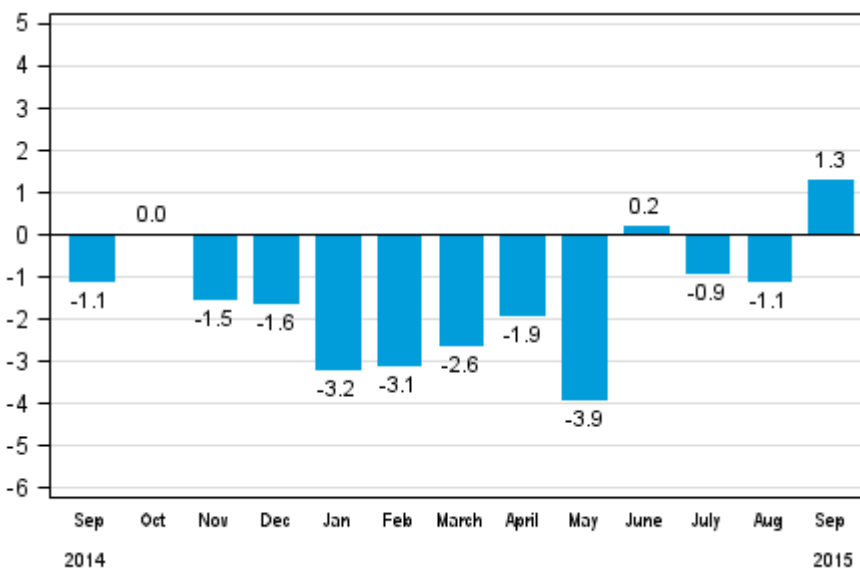
# Volume index of industrial output

2015, September

## Industrial output went up by 1.3 per cent year-on-year in September

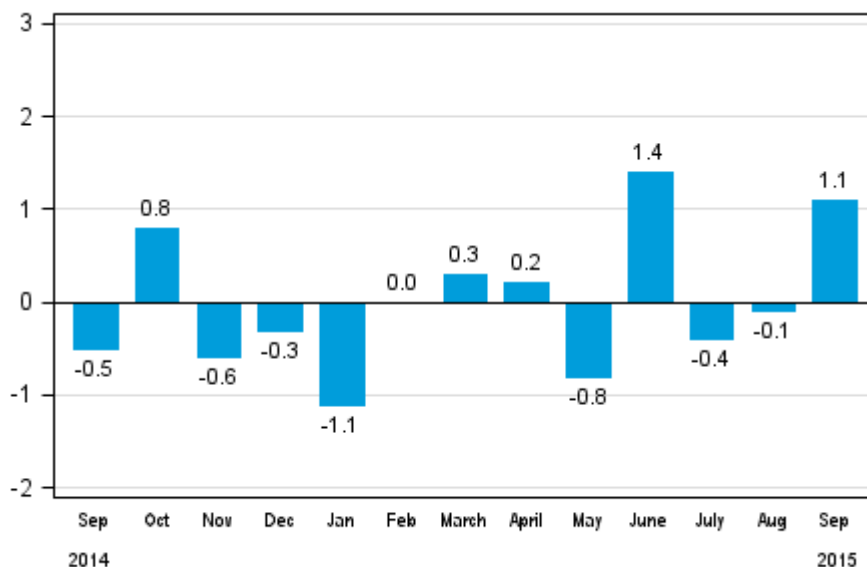
According to Statistics Finland, output of total industries adjusted for working days was 1.3 per cent higher in September 2015 compared to September 2014. During January to September, industrial output declined by 1.7 per cent year-on-year. The prolonged decline in industrial output turned into growth in September.

**Working day adjusted change in total industrial output (BCDE) from corresponding month previous year, %, TOL 2008**



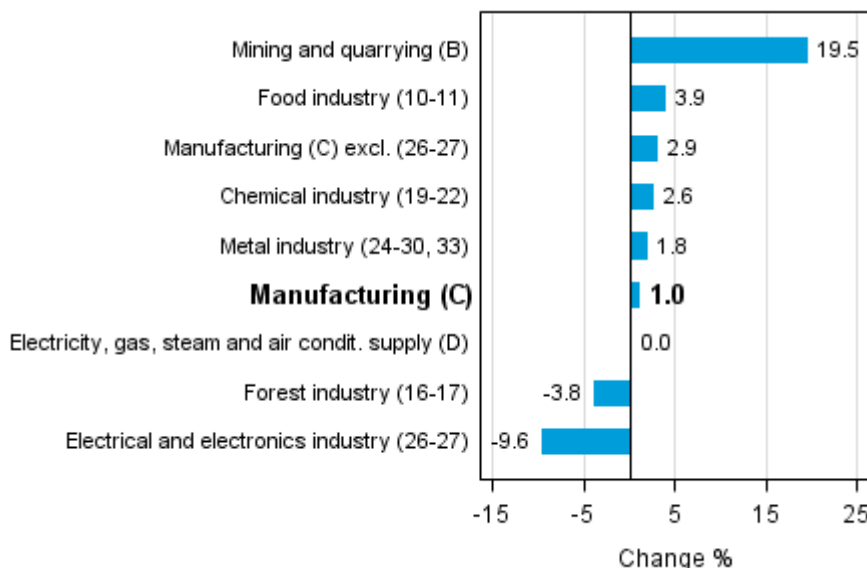
Seasonally adjusted output grew in September by 1.1 per cent compared with August. In August, seasonally adjusted output declined by 0.1 per cent from July. In July, seasonally adjusted output decreased by 0.4 per cent month-on-month.

**Seasonally adjusted change in total industrial output (BCDE) from previous month, %, TOL 2008**



Industrial output grew in several main industries in September. Output increased most, by 19.5 per cent, in mining and quarrying. The exceptionally dry September was visible as a growth in peat production. The prolonged decline in the food industry turned into a growth of close on four per cent in September. In the chemical industry, output grew by 2.6 per cent. In the forest industry, output was 3.8 per cent down in September on twelve months back.

**Working day adjusted change in industrial output by industry 9/2014-9/2015, %, TOL 2008**



Capacity utilisation rate in manufacturing (C) was 80.6 per cent in September, or 0.3 percentage points lower than one year earlier. In the forest industry, capacity utilisation rate was 81.6 per cent in September, or 5.2 percentage points lower than in September 2014. In the metal industry, capacity utilisation rate was 82.7 per cent in September, or 0.7 percentage points higher than one year earlier.

Revised data for September 2015 will be published at 9 am on 10 December 2015 in connection with the release of industrial output data for October 2015. The revision is influenced by the estimation used in the latest release, which concerns the periodic tax return data used for enterprises with fewer than 50 employees. Because of the method used, seasonally adjusted figures for previous months may change even if the original figures do not become revised. The seasonally adjusted figures will also be adjusted for working days.

# Contents

Industrial output went up by 1.3 per cent year-on-year in September .....	5
---	---

## Tables

Table 1. Volume index of industrial output, value added, original, working day adjusted, seasonally adjusted change percentage.....	6
---	---

## Figures

### Appendix figures

Appendix figure 1. Working day adjusted change percentage of industrial output September 2014 /September 2015, TOL 2008.....	7
--	---

Appendix figure 2. Seasonally adjusted change percentage of industrial output August 2015 /September 2015, TOL 2008.....	7
--	---

Appendix figure 3. Seasonally adjusted industrial output Finland, Germany, Sweden, France and United Kingdom (BCD) 2005 - 2015, 2010=100, TOL 2008.....	8
---	---

Revisions in these statistics.....	9
------------------------------------	---

## Industrial output went up by 1.3 per cent year-on-year in September

According to Statistics Finland, output of total industries adjusted for working days was 1.3 per cent higher in September 2015 compared to September 2014. Seasonally adjusted output grew by 1.1 per cent in September compared to August.

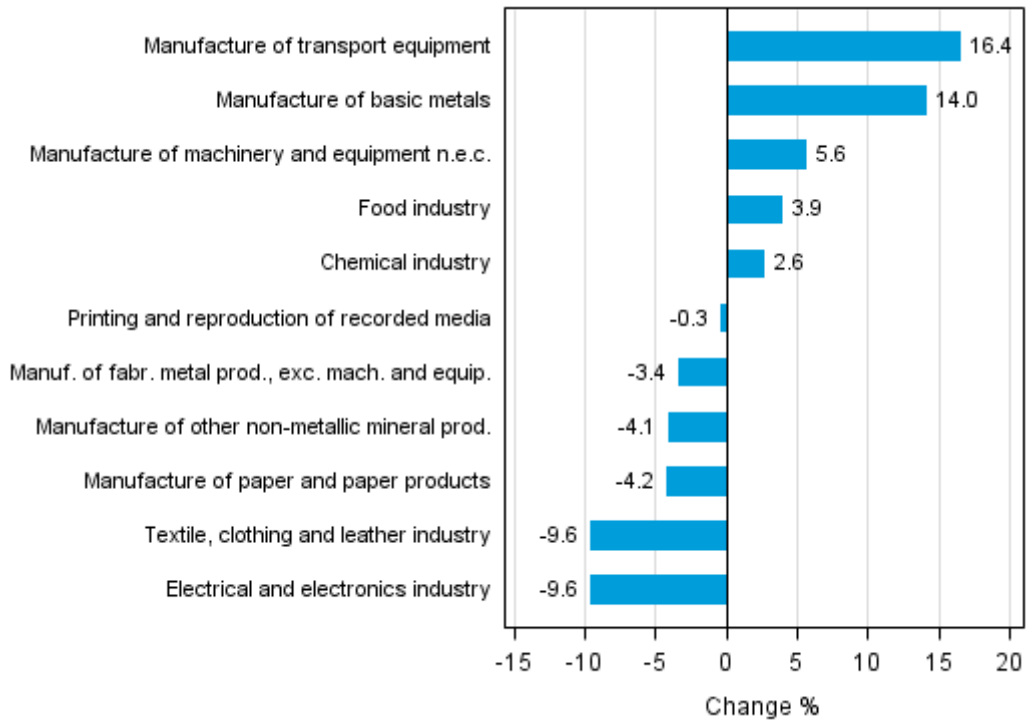
Adjusted for working days, industrial output (C) was one per cent higher than one year ago in September. Seasonally adjusted output grew by 1.2 per cent in September compared to August.

**Table 1. Volume index of industrial output, value added, original, working day adjusted, seasonally adjusted change percentage**

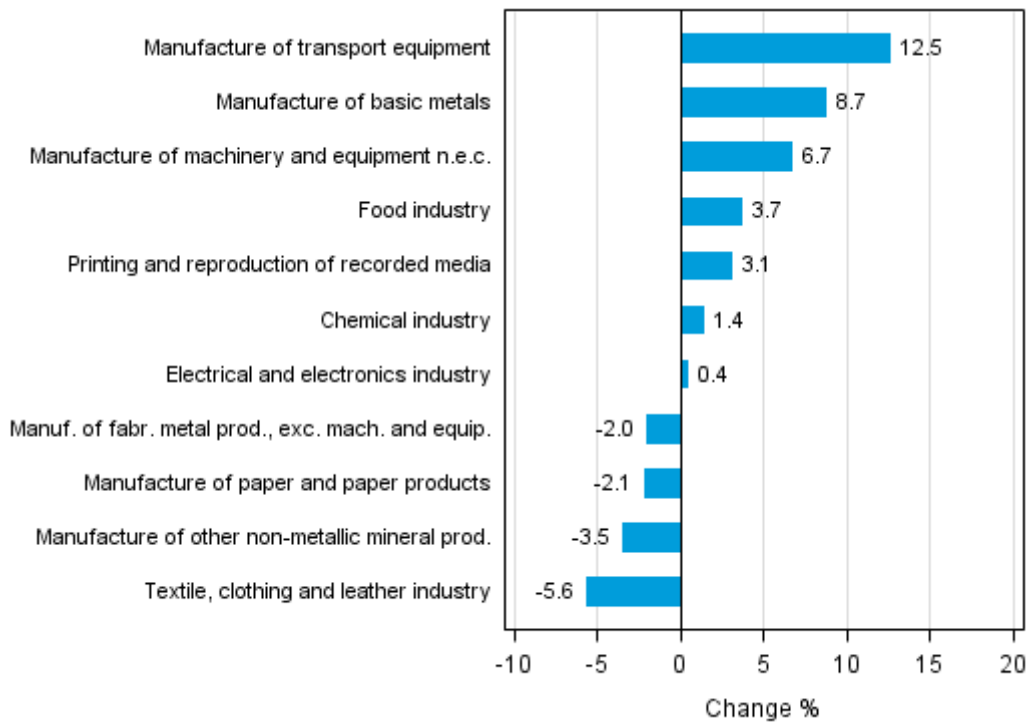
	Value added share	Original change percentage, 2015 SEP / 2014 SEP	Working day adj. change percentage, 2015 SEP / 2014 SEP	Seasonal adj. change percentage, 2015 SEP / 2015 AUG
Industry (Tot 2008)				
Total industries	100,0	1,9	1,3	1,1
B Mining and quarrying	1,9	19,5	19,5	6,7
C Manufacturing	85,0	1,8	1,0	1,2
10 Manufacture of food products	7,7	4,8	4,2	3,9
11 Manufacture of beverages	1,3	4,1	2,8	4,1
13 Manufacture of textiles	0,5	5,3	3,0	-6,4
14 Manufacture of wearing apparel	0,4	-17,9	-17,9	0,5
15 Manufacture of leather and related products	0,2	-24,7	-24,7	-10,3
16 Manufacture of wood and of products of wood and cork, except furniture; manufacture of articles of straw and plaiting materials	3,6	-2,7	-3,3	-2,0
17 Manufacture of paper and paper products	9,4	-4,2	-4,2	-2,1
18 Printing and reproduction of recorded media	1,8	-1,2	-0,3	3,1
23 Manufacture of other non-metallic mineral products	3,3	-3,8	-4,1	-3,5
24 Manufacture of basic metals	5,6	15,8	14,0	8,7
25 Manufacture of fabricated metal products, except machinery and equipment	8,3	-2,5	-3,4	-2,0
28 Manufacture of machinery and equipment n.e.c.	10,9	8,1	5,6	6,7
31 Manufacture of furniture	1,1	-0,9	-1,0	-3,3
32 Other manufacturing	0,9	14,5	14,5	3,0
33 Repair and installation of machinery and equipment	3,9	19,0	19,0	4,2
D Electricity, gas, steam and air conditioning supply	10,6	0,0	0,0	-1,4
E Water supply; sewerage, waste management and remediation activities	2,6	-6,1	-6,1	-3,0
36 Water collection, treatment and supply	0,3	0,2	0,2	-0,6
Main industrial groupings:				
Raw materials and productive goods	42,2	-0,5	-0,8	1,2
Investment goods	26,0	5,5	5,5	3,1
Durable goods	1,4	7,0	6,7	-2,2
Other consumer goods	15,0	1,9	1,2	0,7
Special indices:				
10-11 Food industry	9,0	4,7	3,9	3,7
13-15 Textile, clothing and leather industry	1,1	-8,7	-9,6	-5,6
16-17 Forest industry	13,0	-3,8	-3,8	-2,4
19-22 Chemical industry	13,4	2,6	2,6	1,4
24-30 Metal industry	37,6	1,8	0,2	2,1
26-27 Electrical and electronics industry	10,3	-9,6	-9,6	0,4
25,28-30,33 Machinery and metal product industry	25,6	6,9	5,1	2,5
29-30 Manufacture of transport equipment	2,6	16,4	16,4	12,5

# Appendix figures

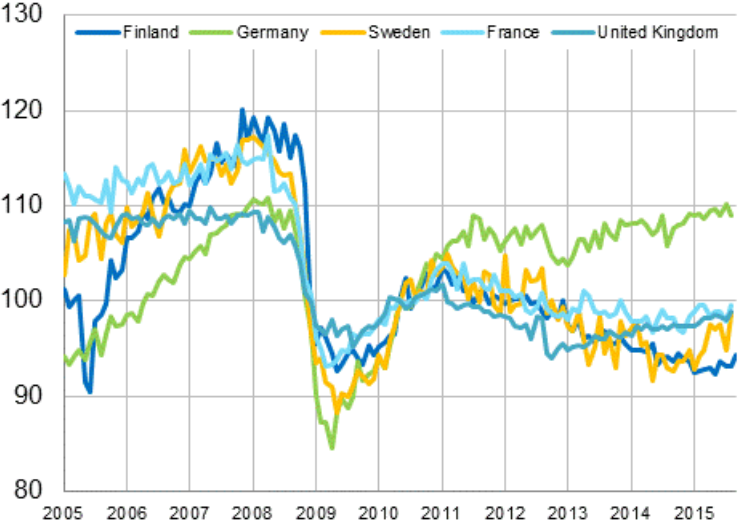
**Appendix figure 1. Working day adjusted change percentage of industrial output September 2014 /September 2015, TOL 2008**



**Appendix figure 2. Seasonally adjusted change percentage of industrial output August 2015 /September 2015, TOL 2008**



**Appendix figure 3. Seasonally adjusted industrial output Finland, Germany, Sweden, France and United Kingdom (BCD) 2005 - 2015, 2010=100, TOL 2008**





## Revisions in these statistics

The data of the original series of industrial output have become revised according to the table below. For more information about data revisions, see Section 3 of the quality description (only in Finnish).

### Revisions to data on annual changes in main industries

Main industries and Statistical reference month		Annual change (%)		Revision (%-point)
		1st release (%)	Latest release (10.11.2015) (%)	
BCDE Total industry	2015 / 04	-4,2	-2,2	2,0
	2015 / 05	-7,2	-6,1	1,1
	2015 / 06	1,7	3,1	1,4
	2015 / 07	-1,9	-1,5	0,4
	2015 / 08	-2,8	-1,7	1,1
C Manufacturing	2015 / 04	-4,9	-2,6	2,3
	2015 / 05	-7,5	-6,2	1,3
	2015 / 06	1,9	3,4	1,5
	2015 / 07	-0,9	-0,4	0,5
	2015 / 08	-3,4	-2,1	1,3
D Electricity, gas, steam and air conditioning supply	2015 / 04	4,1	4,1	0,0
	2015 / 05	-0,5	-0,5	0,0
	2015 / 06	10,0	10,0	0,0
	2015 / 07	10,4	10,4	0,0
	2015 / 08	2,5	2,5	0,0
10-11 Food industry	2015 / 04	-5,4	-7,1	-1,7
	2015 / 05	-4,8	-5,2	-0,4
	2015 / 06	-4,7	-6,5	-1,8
	2015 / 07	-0,7	-0,7	0,0
	2015 / 08	-2,7	-3,7	-1,0
16-17 Forest industry	2015 / 04	-1,5	-1,2	0,3
	2015 / 05	-5,4	-5,7	-0,3
	2015 / 06	1,6	2,1	0,5
	2015 / 07	-1,3	-1,0	0,3
	2015 / 08	1,3	1,5	0,2
19-22 Chemical industry	2015 / 04	-9,7	-0,3	9,4
	2015 / 05	-14,6	-10,7	3,9
	2015 / 06	4,6	6,0	1,4
	2015 / 07	-1,5	-0,1	1,4
	2015 / 08	4,1	0,5	-3,6
24-30, 33 Metal industry	2015 / 04	-4,3	-1,4	2,9
	2015 / 05	-7,6	-5,5	2,1
	2015 / 06	2,9	5,2	2,3
	2015 / 07	-0,4	-0,2	0,2
	2015 / 08	-8,2	-4,3	3,9
26-27 Electrical and electronics industry	2015 / 04	1,4	1,4	0,0
	2015 / 05	-8,7	-10,5	-1,8
	2015 / 06	2,9	0,5	-2,4
	2015 / 07	-8,5	-8,5	0,0
	2015 / 08	-13,1	-13,2	-0,1

Main industries and Statistical reference month		Annual change (%)		Revision (%-point)
		1st release (%)	Latest release (10.11.2015) (%)	
Manufacturing excl. electrical and electronics industry	2015 / 04	-5,7	-3,1	2,6
	2015 / 05	-7,4	-5,7	1,7
	2015 / 06	1,8	3,8	2,0
	2015 / 07	0,2	0,8	0,6
	2015 / 08	-2,0	-0,6	1,4

## Inquiries

Kari Rautio 029 551 2479  
Heidi Myllylä 029 551 3792  
Director in charge:  
Mari Ylä-Jarkko

[volyymi.indeksi@stat.fi](mailto:volyymi.indeksi@stat.fi)  
[www.stat.fi](http://www.stat.fi)

Source: Volume Index of Industrial Output 2015, September. Statistics Finland