

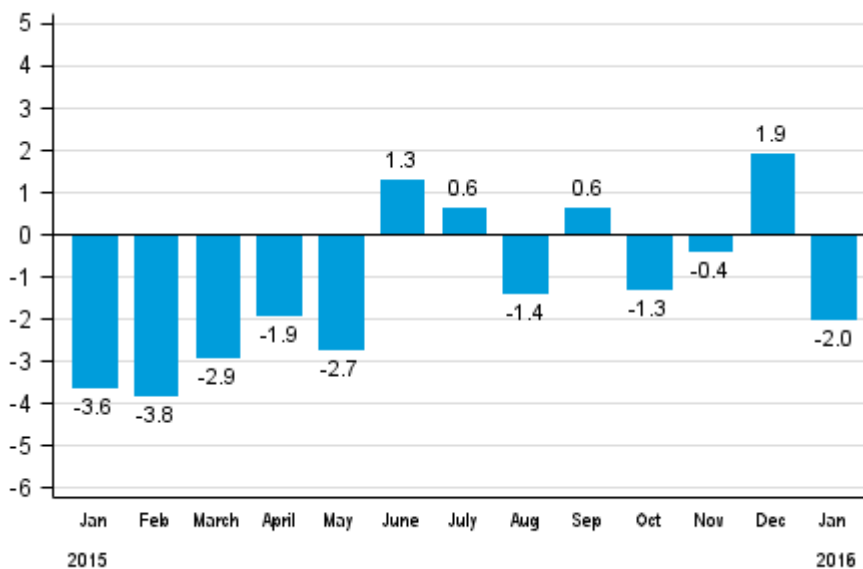
# Volume index of industrial output

2016, January

## Industrial output decreased by 2.0 per cent year-on-year in January

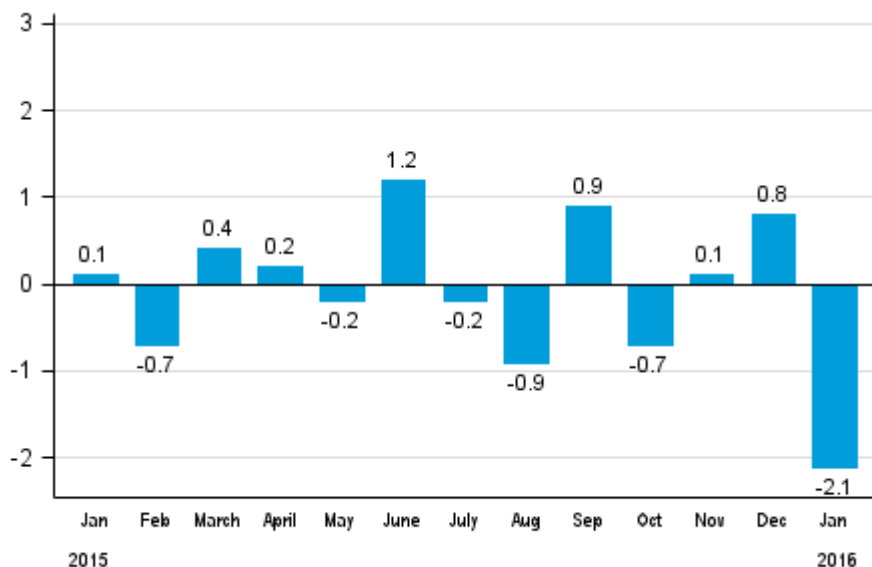
According to Statistics Finland, output of total industries adjusted for working days was 2.0 per cent lower in January 2016 than in January 2015. January did not bring a turn to the industrial distress. Output in the metal industry was on a growth track in late 2015 but turned to a decline of 7.5 per cent in January. The growth in the chemical industry and food industry was positive.

**Working day adjusted change in total industrial output (BCDE) from corresponding month previous year, %, TOL 2008**



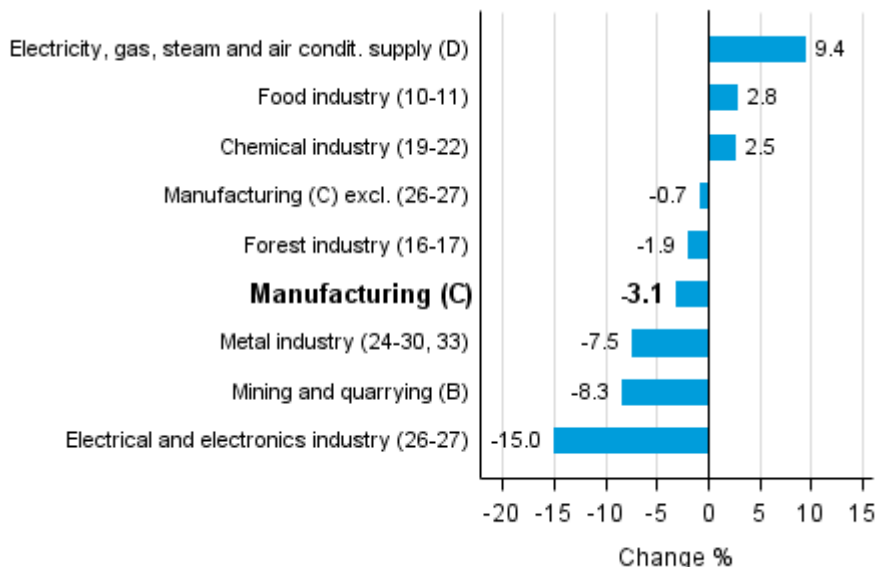
Seasonally adjusted output fell in January by 2.1 per cent compared with the previous month. In December, seasonally adjusted output grew by 0.8 per cent. In November, seasonally adjusted output increased by 0.1 per cent from the previous month.

**Seasonally adjusted change in total industrial output (BCDE) from previous month, %, TOL 2008**



Among the main industries, the biggest growth of 9.4 per cent was recorded in the production of electricity. In the food industry, output grew by 2.8 per cent in January. In the chemical industry, output increased by 2.5 per cent from one year ago. Output fell most in the electrical and electronics industry, by 15.0 per cent. In the metal industry, output decreased by 7.5 per cent from twelve months back.

**Working day adjusted change in industrial output by industry 1/2015-1/2016, %, TOL 2008**



In January, capacity utilisation rate in manufacturing (C) was 79.2 per cent, or 0.3 percentage points lower than one year earlier. In the forest industry, capacity utilisation rate was 91.6 per cent in January, or 4.8 percentage points higher than in January 2015. In the metal industry, capacity utilisation rate was 78.3 per cent in January, which was 2.8 percentage points lower than one year earlier.

Revised data for January 2016 will be published at 9 am on 8 April 2016 in connection with the release of industrial output data for February 2016. The revision is influenced by the estimation used in the latest release, which concerns the periodic tax return data used for enterprises with fewer than 50 employees. Because of the method used, seasonally adjusted figures for previous months may change even if the original figures do not become revised. The seasonally adjusted figures will also be adjusted for working days.

# Contents

Industrial output decreased by 2.0 per cent year-on-year in January .....	5
---	---

## Tables

Table 1. Volume index of industrial output, value added, original, working day adjusted, seasonally adjusted change percentage.....	6
---	---

## Figures

### Appendix figures

Appendix figure 1. Working day adjusted change percentage of industrial output January 2015 /January 2016, TOL 2008.....	7
--	---

Appendix figure 2. Seasonally adjusted change percentage of industrial output December 2015 /January 2016, TOL 2008.....	7
--	---

Appendix figure 3. Seasonally adjusted industrial output Finland, Germany, Sweden, France and United Kingdom (BCD) 2005 - 2016, 2010=100, TOL 2008.....	8
---	---

Revisions in these statistics.....	9
------------------------------------	---

## Industrial output decreased by 2.0 per cent year-on-year in January

According to Statistics Finland, output of total industries adjusted for working days was 2.0 per cent lower in January 2016 than in January 2015. Seasonally adjusted output fell in January by 2.1 per cent compared with December.

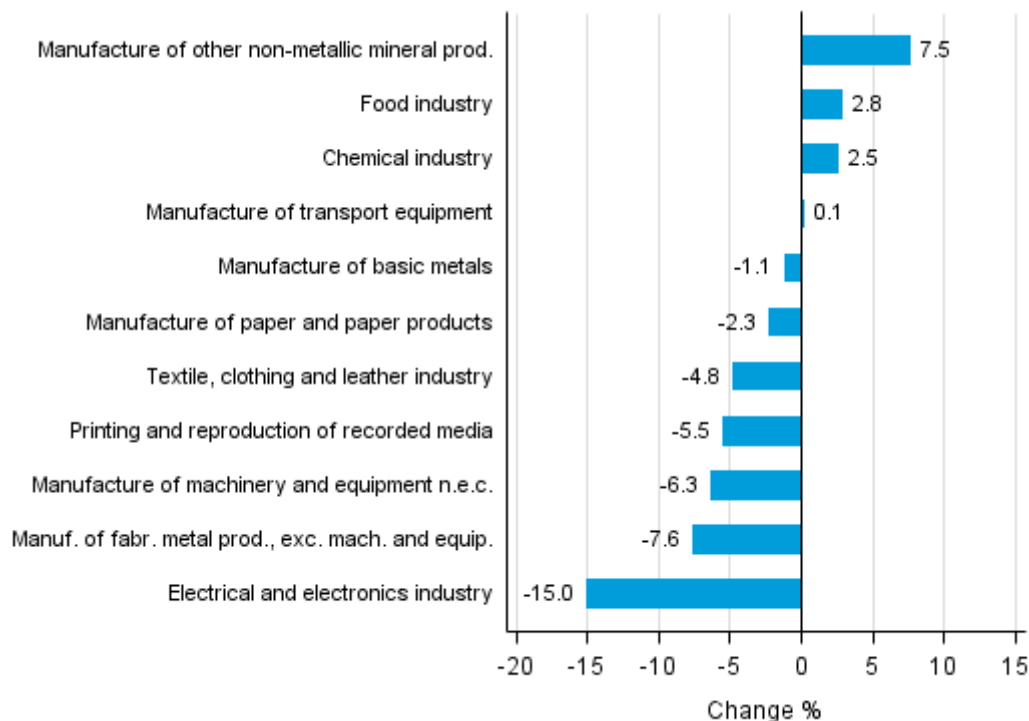
Adjusted for working days, industrial output (C) decreased by 3.1 per cent in January from one year back. Seasonally adjusted output fell in January by 2.5 per cent compared with December.

**Table 1. Volume index of industrial output, value added, original, working day adjusted, seasonally adjusted change percentage**

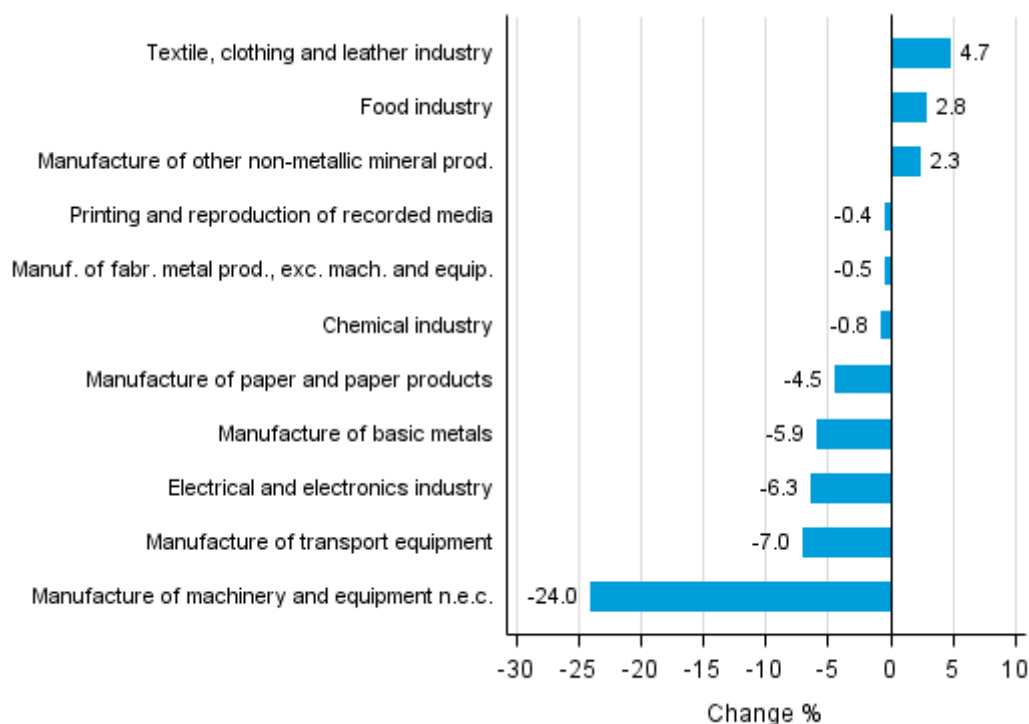
	Value added share	Original change percentage, 2016 JAN / 2015 JAN	Working day adj. change percentage, 2016 JAN / 2015 JAN	Seasonal adj. change percentage, 2016 JAN / 2015 DEC
Industry (Tot 2008)				
Total industries	100,0	-3,7	-2,0	-2,1
B Mining and quarrying	1,0	-8,3	-8,3	-13,2
C Manufacturing	85,3	-5,6	-3,1	-2,5
10 Manufacture of food products	7,3	-1,0	2,9	2,6
11 Manufacture of beverages	1,2	3,0	3,6	3,2
13 Manufacture of textiles	0,6	-11,1	-4,9	1,8
14 Manufacture of wearing apparel	0,5	-7,7	-4,2	-2,9
15 Manufacture of leather and related products	0,3	-21,9	-21,9	1,2
16 Manufacture of wood and of products of wood and cork, except furniture; manufacture of articles of straw and plaiting materials	4,3	-5,3	-2,9	0,5
17 Manufacture of paper and paper products	9,1	-2,3	-2,3	-4,5
18 Printing and reproduction of recorded media	1,6	-7,6	-5,5	-0,4
23 Manufacture of other non-metallic mineral products	3,2	5,3	7,5	2,3
24 Manufacture of basic metals	5,0	-4,3	-1,1	-5,9
25 Manufacture of fabricated metal products, except machinery and equipment	7,4	-11,8	-7,6	-0,5
28 Manufacture of machinery and equipment n.e.c.	11,4	-10,9	-6,3	-24,0
31 Manufacture of furniture	0,9	-2,4	1,0	-1,9
32 Other manufacturing	0,8	-6,4	-6,4	-3,1
33 Repair and installation of machinery and equipment	4,7	-2,7	-0,6	-0,9
D Electricity, gas, steam and air conditioning supply	10,8	9,4	9,4	5,5
E Water supply; sewerage, waste management and remediation activities	2,9	-9,7	-9,7	-10,9
36 Water collection, treatment and supply	0,4	3,5	3,5	-0,2
Main industrial groupings:				
Raw materials and productive goods	41,6	-5,5	-4,8	-3,7
Investment goods	27,6	-11,2	-8,6	-5,9
Durable goods	1,3	-1,3	1,5	-1,9
Other consumer goods	14,8	2,7	5,6	2,6
Special indices:				
10-11 Food industry	8,5	-0,5	2,8	2,8
13-15 Textile, clothing and leather industry	1,3	-12,2	-4,8	4,7
16-17 Forest industry	13,5	-3,2	-1,9	-3,0
19-22 Chemical industry	13,1	2,5	2,5	-0,8
24-30 Metal industry	37,6	-11,6	-8,3	-5,2
26-27 Electrical and electronics industry	11,1	-17,7	-15,0	-6,3
25,28-30,33 Machinery and metal product industry	26,2	-8,7	-4,1	-5,7
29-30 Manufacture of transport equipment	2,6	0,1	0,1	-7,0

# Appendix figures

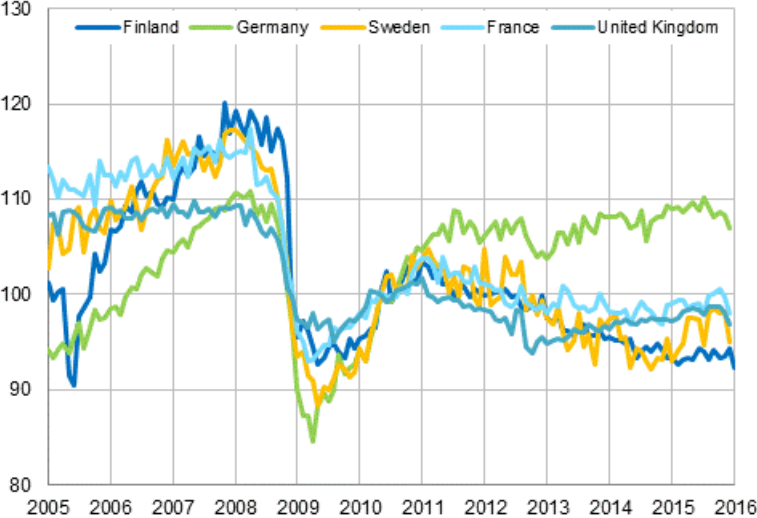
**Appendix figure 1. Working day adjusted change percentage of industrial output January 2015 /January 2016, TOL 2008**



**Appendix figure 2. Seasonally adjusted change percentage of industrial output December 2015 /January 2016, TOL 2008**



**Appendix figure 3. Seasonally adjusted industrial output Finland, Germany, Sweden, France and United Kingdom (BCD) 2005 - 2016, 2010=100, TOL 2008**





## Revisions in these statistics

The data of the original series of industrial output have become revised according to the table below. For more information about data revisions, see Section 3 of the quality description (only in Finnish).

### Revisions to data on annual changes in main industries

Main industries and Statistical reference month		Annual change (%)		Revision (%-point)
		1st release (%)	Latest release (10.03.2016) (%)	
BCDE Total industry	2015 / 08	-2,8	-2,0	0,8
	2015 / 09	1,9	1,2	-0,7
	2015 / 10	-2,7	-3,2	-0,5
	2015 / 11	-0,4	1,0	1,4
	2015 / 12	3,7	5,2	1,5
C Manufacturing	2015 / 08	-3,4	-2,4	1,0
	2015 / 09	1,8	1,3	-0,5
	2015 / 10	-3,2	-3,8	-0,6
	2015 / 11	-0,2	1,5	1,7
	2015 / 12	3,9	5,6	1,7
D Electricity, gas, steam and air conditioning supply	2015 / 08	2,5	2,5	0,0
	2015 / 09	0,0	0,0	0,0
	2015 / 10	0,9	0,9	0,0
	2015 / 11	-1,0	-1,0	0,0
	2015 / 12	2,1	2,1	0,0
10-11 Food industry	2015 / 08	-2,7	-2,7	0,0
	2015 / 09	4,7	3,7	-1,0
	2015 / 10	-5,7	-5,0	0,7
	2015 / 11	-0,0	0,6	0,6
	2015 / 12	-4,7	-2,1	2,6
16-17 Forest industry	2015 / 08	1,3	2,6	1,3
	2015 / 09	-3,8	-1,8	2,0
	2015 / 10	-3,9	-2,5	1,4
	2015 / 11	3,6	5,0	1,4
	2015 / 12	2,7	3,9	1,2
19-22 Chemical industry	2015 / 08	4,1	3,5	-0,6
	2015 / 09	2,6	1,1	-1,5
	2015 / 10	-1,2	-2,8	-1,6
	2015 / 11	-5,2	-2,5	2,7
	2015 / 12	-0,4	1,3	1,7
24-30, 33 Metal industry	2015 / 08	-8,2	-5,5	2,7
	2015 / 09	3,5	2,6	-0,9
	2015 / 10	-3,0	-4,2	-1,2
	2015 / 11	0,7	2,1	1,4
	2015 / 12	8,2	9,4	1,2
26-27 Electrical and electronics industry	2015 / 08	-13,1	-14,9	-1,8
	2015 / 09	-9,6	-10,9	-1,3
	2015 / 10	-7,2	-8,7	-1,5
	2015 / 11	-4,8	-4,7	0,1
	2015 / 12	5,3	4,0	-1,3

Main industries and Statistical reference month		Annual change (%)		Revision (%-point)
		1st release (%)	Latest release (10.03.2016) (%)	
Manufacturing excl. electrical and electronics industry	2015 / 08	-2,0	-0,5	1,5
	2015 / 09	3,6	3,2	-0,4
	2015 / 10	-2,6	-3,1	-0,5
	2015 / 11	0,5	2,4	1,9
	2015 / 12	3,7	5,9	2,2

## Inquiries

Kari Rautio 029 551 2479

Heidi Myllylä 029 551 3792

Director in charge:

Mari Ylä-Jarkko

[volyyimi.indeksi@stat.fi](mailto:volyyimi.indeksi@stat.fi)

[www.stat.fi](http://www.stat.fi)

Source: Volume Index of Industrial Output 2016, January. Statistics Finland