

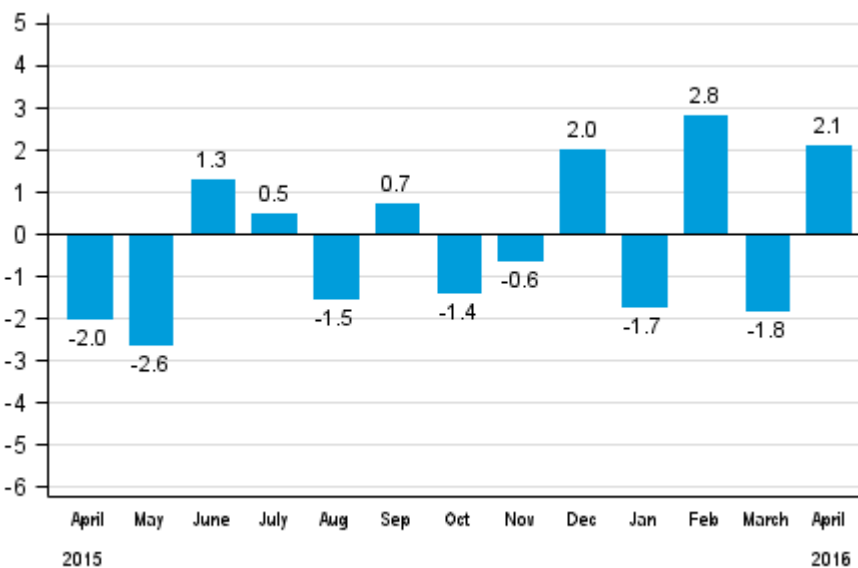
Volume index of industrial output

2016, April

Industrial output increased by 2.1 per cent year-on-year in April

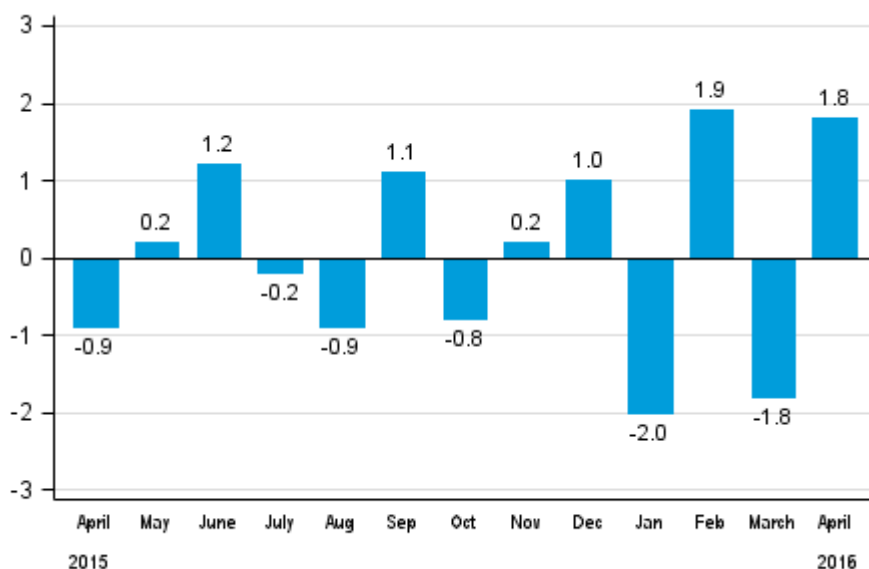
According to Statistics Finland, output of total industries adjusted for working days was 2.1 per cent higher in April 2016 than twelve months earlier. In the January to April period, industrial output adjusted for working days went up by 0.3 per cent from one year ago.

Working day adjusted change in total industrial output (BCDE) from corresponding month previous year, %, TOL 2008



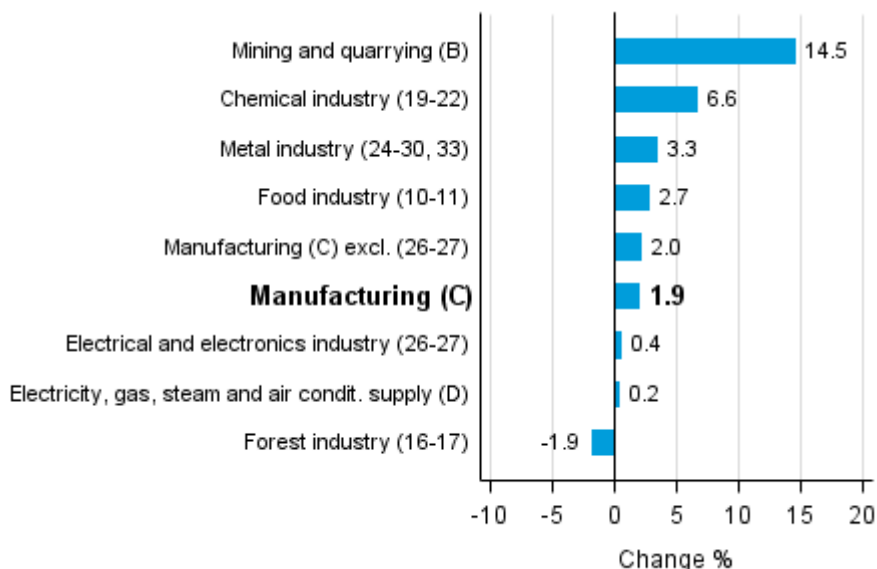
Seasonally adjusted output grew by 1.8 per cent from March in April. In March, seasonally adjusted output went down by 1.8 per cent. In February, seasonally adjusted output increased by 1.9 per cent from the previous month.

Seasonally adjusted change in total industrial output (BCDE) from previous month, %, TOL 2008



Among the main industries, output grew most in mining and quarrying, by 14.5 per cent. Output in the chemical industry was in April 6.6 per cent up on twelve months back. In the food industry, output grew by 2.7 per cent in April. Among the main industries, output only decreased in the forest industry, where output declined by 1.9 per cent from one year ago.

Working day adjusted change in industrial output by industry 4/2015-4/2016, %, TOL 2008



In April, capacity utilisation rate in manufacturing (C) was 83.4 per cent, or 2.4 percentage points higher than one year earlier. In the forest industry, capacity utilisation rate was 90 per cent in April, or 0.6 percentage points higher than in April 2015. In the metal industry, capacity utilisation rate was 85 per cent in April, which was 2.6 percentage points higher than one year earlier.

Revised data for April 2016 will be published at 9 am on 8 July 2016 in connection with the release of industrial output data for May 2016. The revision is influenced by the estimation used in the latest release, which concerns the periodic tax return data used for enterprises with fewer than 50 employees. Because of the method used, seasonally adjusted figures for previous months may change even if the original figures do not become revised. The seasonally adjusted figures will also be adjusted for working days.

Contents

Industrial output increased by 2.1 per cent year-on-year in April.....	5
--	---

Tables

Table 1. Volume index of industrial output, value added, original, working day adjusted, seasonally adjusted change percentage.....	6
---	---

Figures

Appendix figures

Appendix figure 1. Working day adjusted change percentage of industrial output April 2015 /April 2016, TOL 2008.....	7
Appendix figure 2. Seasonally adjusted change percentage of industrial output March 2016 /April 2016, TOL 2008.....	7
Appendix figure 3. Seasonally adjusted industrial output Finland, Germany, Sweden, France and United Kingdom (BCD) 2005 - 2016, 2010=100, TOL 2008.....	8
Revisions in these statistics.....	9

Industrial output increased by 2.1 per cent year-on-year in April

According to Statistics Finland, output of total industries adjusted for working days was 2.1 per cent higher in April 2016 than twelve months earlier. Seasonally adjusted output grew by 1.8 per cent from March in April.

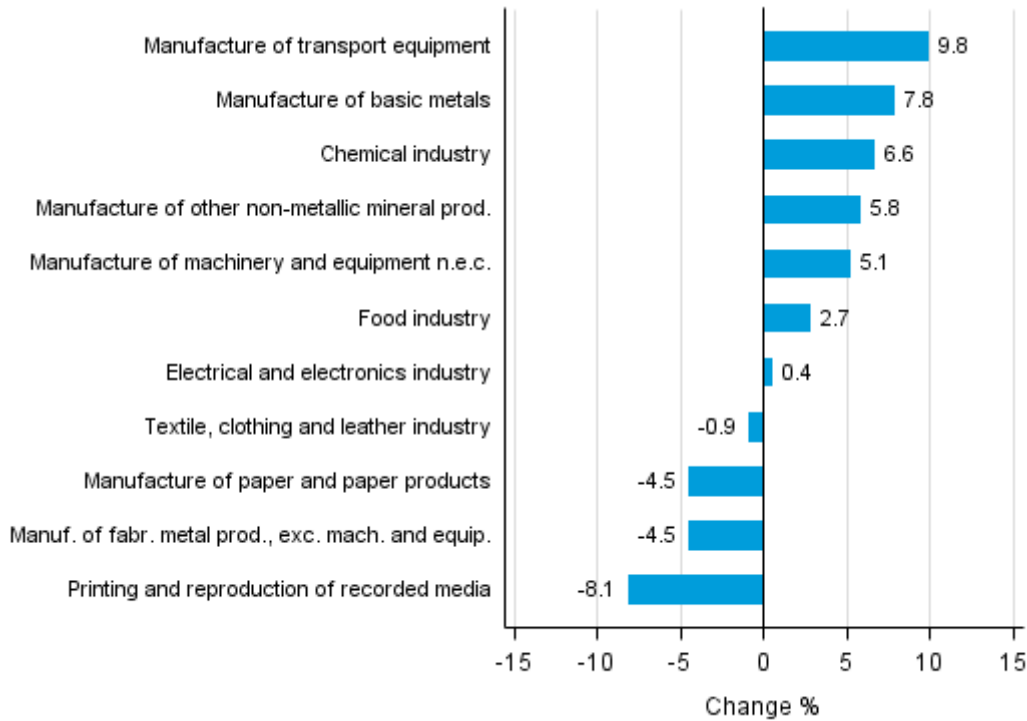
Adjusted for working days, industrial output (C) grew by 1.9 per cent in April from one year back. Seasonally adjusted output grew by 1.6 per cent from March in April.

Table 1. Volume index of industrial output, value added, original, working day adjusted, seasonally adjusted change percentage

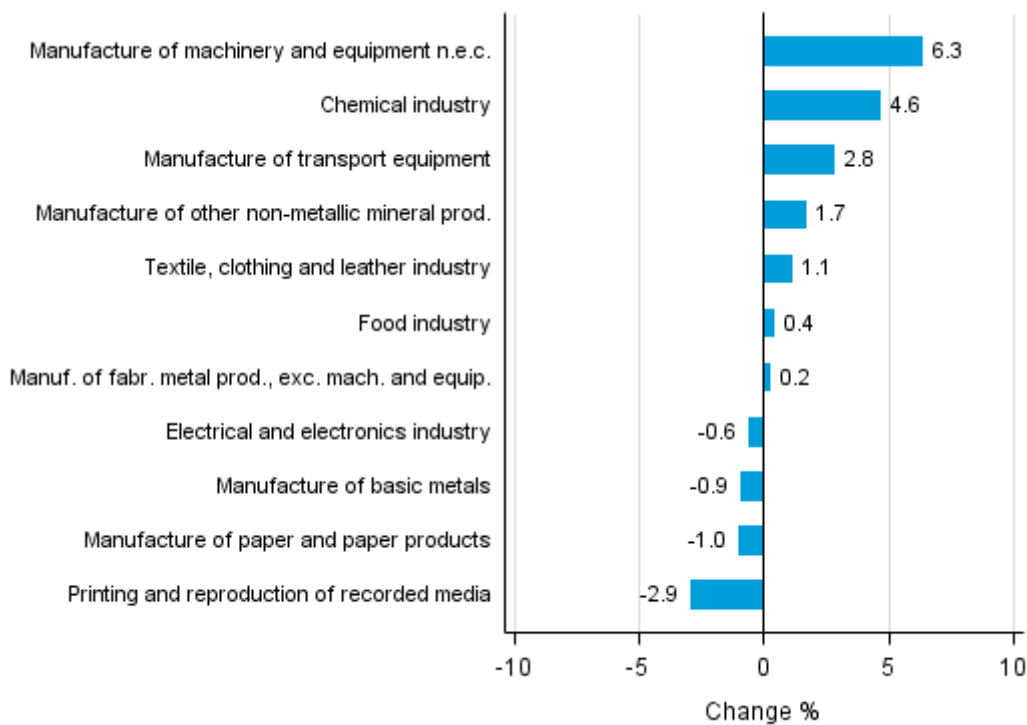
	Value added share	Original change percentage, 2016 APR / 2015 APR	Working day adj. change percentage, 2016 APR / 2015 APR	Seasonal adj. change percentage, 2016 APR / 2016 MAR
Industry (Tol 2008)				
Total industries	100,0	4,3	2,1	1,8
B Mining and quarrying	1,0	14,5	14,5	2,1
C Manufacturing	85,3	4,6	1,9	1,6
10 Manufacture of food products	7,3	4,3	2,3	0,3
11 Manufacture of beverages	1,2	4,1	3,4	0,8
13 Manufacture of textiles	0,6	9,7	6,9	1,5
14 Manufacture of wearing apparel	0,5	-3,0	-6,5	-1,1
15 Manufacture of leather and related products	0,3	-5,9	-5,9	2,7
16 Manufacture of wood and of products of wood and cork, except furniture; manufacture of articles of straw and plaiting materials	4,3	7,0	2,4	-0,6
17 Manufacture of paper and paper products	9,1	-4,5	-4,5	-1,0
18 Printing and reproduction of recorded media	1,6	-5,1	-8,1	-2,9
23 Manufacture of other non-metallic mineral products	3,2	10,7	5,8	1,7
24 Manufacture of basic metals	5,0	11,9	7,8	-0,9
25 Manufacture of fabricated metal products, except machinery and equipment	7,4	-2,2	-4,5	0,2
28 Manufacture of machinery and equipment n.e.c.	11,4	10,2	5,1	6,3
31 Manufacture of furniture	0,9	0,5	-2,8	-1,6
32 Other manufacturing	0,8	1,4	1,4	-2,3
33 Repair and installation of machinery and equipment	4,7	5,9	3,7	4,2
D Electricity, gas, steam and air conditioning supply	10,8	0,2	0,2	1,5
E Water supply; sewerage, waste management and remediation activities	2,9	9,0	5,8	7,7
36 Water collection, treatment and supply	0,4	6,2	6,2	1,9
Main industrial groupings:				
Raw materials and productive goods	41,6	1,1	0,1	0,6
Investment goods	27,6	9,2	6,1	2,5
Durable goods	1,3	3,0	-0,0	0,0
Other consumer goods	14,8	5,0	3,0	1,9
Special indices:				
10-11 Food industry	8,5	4,3	2,7	0,4
13-15 Textile, clothing and leather industry	1,3	1,9	-0,9	1,1
16-17 Forest industry	13,5	-0,8	-1,9	-0,4
19-22 Chemical industry	13,1	6,6	6,6	4,6
24-30 Metal industry	37,6	6,0	3,4	1,9
26-27 Electrical and electronics industry	11,1	3,6	0,4	-0,6
25,28-30,33 Machinery and metal product industry	26,2	5,9	1,4	2,5
29-30 Manufacture of transport equipment	2,6	9,8	9,8	2,8

Appendix figures

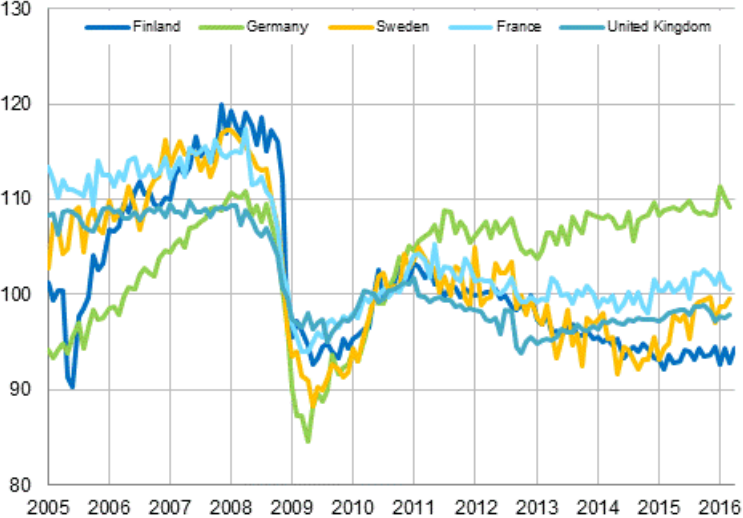
Appendix figure 1. Working day adjusted change percentage of industrial output April 2015 /April 2016, TOL 2008



Appendix figure 2. Seasonally adjusted change percentage of industrial output March 2016 /April 2016, TOL 2008



Appendix figure 3. Seasonally adjusted industrial output Finland, Germany, Sweden, France and United Kingdom (BCD) 2005 - 2016, 2010=100, TOL 2008



Revisions in these statistics

The data of the original series of industrial output have become revised according to the table below. For more information about data revisions, see Section 3 of the quality description (only in Finnish).

Revisions to data on annual changes in main industries

Main industries and Statistical reference month		Annual change (%)		Revision (%-point)
		1st release (%)	Latest release (10.06.2016) (%)	
BCDE Total industry	2015 / 11	-0,4	0,9	1,3
	2015 / 12	3,7	5,1	1,4
	2016 / 01	-3,7	-3,6	0,1
	2016 / 02	1,5	2,9	1,4
	2016 / 03	-2,6	-3,0	-0,4
C Manufacturing	2015 / 11	-0,2	1,3	1,5
	2015 / 12	3,9	5,6	1,7
	2016 / 01	-5,6	-5,4	0,2
	2016 / 02	0,3	2,0	1,7
	2016 / 03	-3,1	-3,4	-0,3
D Electricity, gas, steam and air conditioning supply	2015 / 11	-1,0	-1,0	0,0
	2015 / 12	2,1	2,1	0,0
	2016 / 01	9,4	9,4	0,0
	2016 / 02	8,6	8,6	0,0
	2016 / 03	0,5	0,5	0,0
10-11 Food industry	2015 / 11	-0,0	0,7	0,7
	2015 / 12	-4,7	-2,1	2,6
	2016 / 01	-0,5	-1,9	-1,4
	2016 / 02	6,1	6,3	0,2
	2016 / 03	2,1	1,3	-0,8
16-17 Forest industry	2015 / 11	3,6	5,0	1,4
	2015 / 12	2,7	4,0	1,3
	2016 / 01	-3,2	-3,5	-0,3
	2016 / 02	2,1	2,1	0,0
	2016 / 03	-1,4	-1,9	-0,5
19-22 Chemical industry	2015 / 11	-5,2	-2,7	2,5
	2015 / 12	-0,4	1,0	1,4
	2016 / 01	2,5	1,3	-1,2
	2016 / 02	3,1	2,6	-0,5
	2016 / 03	-9,7	-7,8	1,9
24-30, 33 Metal industry	2015 / 11	0,7	1,9	1,2
	2015 / 12	8,2	9,5	1,3
	2016 / 01	-10,8	-9,1	1,7
	2016 / 02	-1,8	0,6	2,4
	2016 / 03	-2,1	-2,7	-0,6
26-27 Electrical and electronics industry	2015 / 11	-4,8	-4,8	0,0
	2015 / 12	5,3	4,6	-0,7
	2016 / 01	-17,7	-13,8	3,9
	2016 / 02	-7,3	-3,6	3,7
	2016 / 03	-0,6	-0,8	-0,2

Main industries and Statistical reference month		Annual change (%)		Revision (%-point)
		1st release (%)	Latest release (10.06.2016) (%)	
Manufacturing excl. electrical and electronics industry	2015 / 11	0,5	2,2	1,7
	2015 / 12	3,7	5,7	2,0
	2016 / 01	-3,6	-4,0	-0,4
	2016 / 02	1,6	2,9	1,3
	2016 / 03	-3,5	-3,8	-0,3

Inquiries

Kari Rautio 029 551 2479

Heidi Myllylä 029 551 3792

Director in charge:

Mari Ylä-Jarkko

volyyimi.indeksi@stat.fi

www.stat.fi

Source: Volume Index of Industrial Output 2016, April. Statistics Finland