

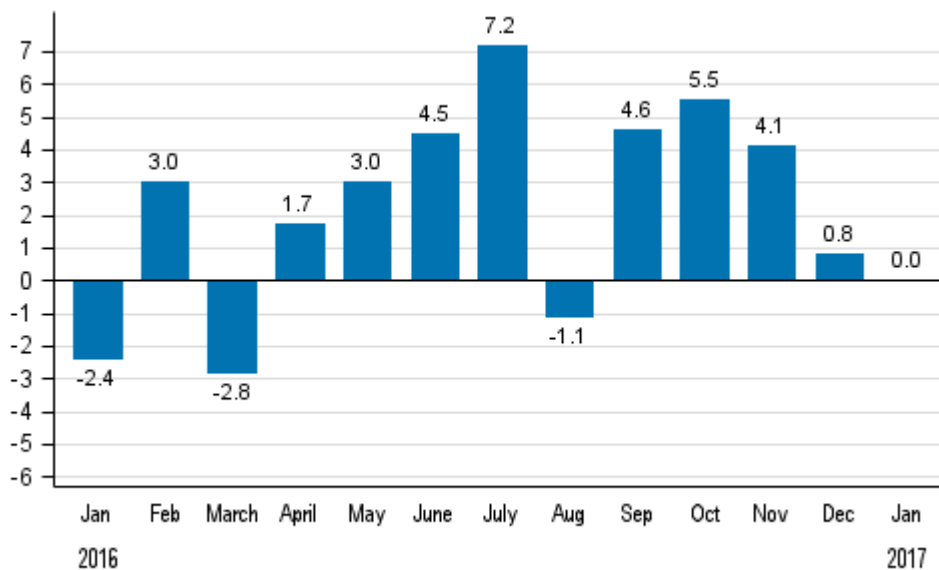
Volume index of industrial output

2017, January

Industrial output was in January on level with the previous year

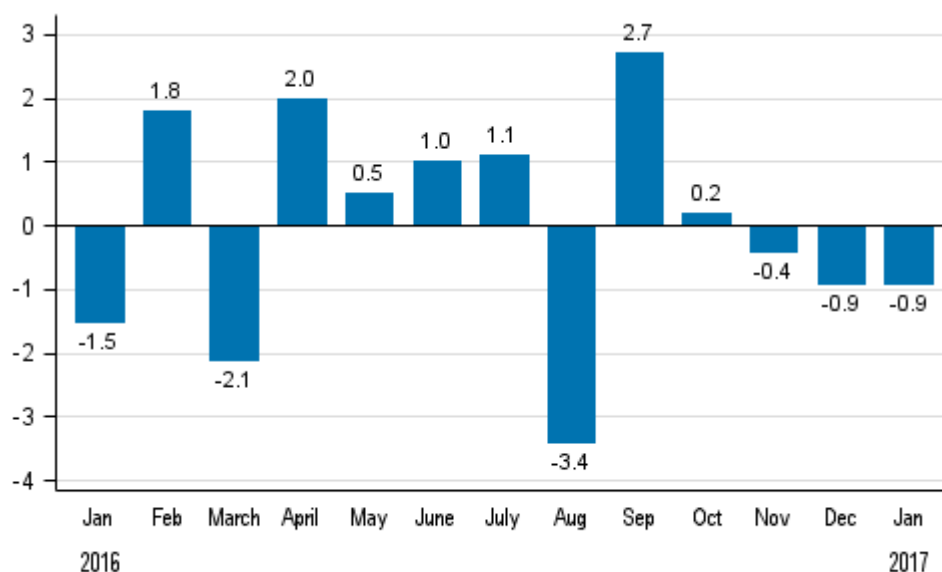
According to Statistics Finland, output of total industries adjusted for working days was in January 2017 on level with January 2016. This year's January had two working days more than last year. Original output grew by 4.2 per cent in January from one year back.

Working day adjusted change in total industrial output (BCDE) from corresponding month previous year, %, TOL 2008



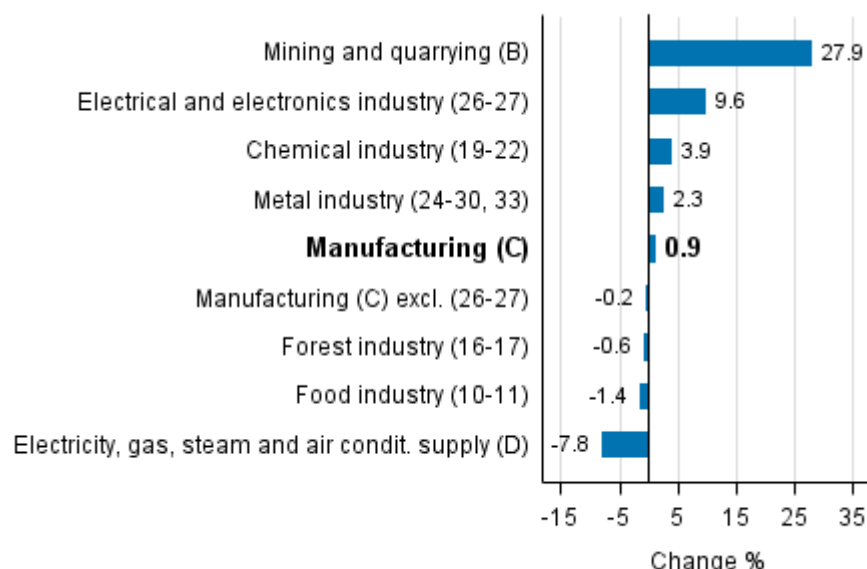
In January and December, seasonally adjusted output decreased by 0.9 per cent from the previous months. In November, output declined by 0.4 per cent.

Seasonally adjusted change in total industrial output (BCDE) from previous month, %, TOL 2008



In January, output grew in several main industries. Output increased most, by nearly 28 per cent, in mining and quarrying. Output in the electrical and electronics industry grew by 9.6 per cent. In January, output in the chemical industry grew by 3.9 per cent from twelve months back. Output declined most, by 7.8 per cent, in electricity production. In the food industry, output decreased by 1.4 per cent in January from twelve months back.

Working day adjusted change in industrial output by industry 1/2016-1/2017, %, TOL 2008



In January, capacity utilisation rate in manufacturing (C) was 84.6 per cent, or 5.7 percentage points higher than one year earlier. In the forest industry, capacity utilisation rate was 88.6 per cent in January, or 0.2 percentage points lower than in January 2016. In the metal industry, capacity utilisation rate was 86.8 per cent in January, which was 9.1 percentage points higher than one year earlier.

Revised data for January 2017 will be published at 9 am on 10 April 2017 in connection with the release of industrial output data for February 2017. The revision is influenced by the estimation used in the latest release, which concerns the periodic tax return data used for enterprises with fewer than 50 employees. Because of the method used, seasonally adjusted figures for previous months may change even if the original figures do not become revised. The seasonally adjusted figures will also be adjusted for working days.

Contents

Industrial output was in January on level with the previous year.....	5
---	---

Tables

Table 1. Volume index of industrial output, value added, original, working day adjusted, seasonally adjusted change percentage.....	6
---	---

Figures

Appendix figures

Appendix figure 1. Working day adjusted change percentage of industrial output January 2016 /January 2017, TOL 2008.....	7
--	---

Appendix figure 2. Seasonally adjusted change percentage of industrial output December 2016 /January 2017, TOL 2008.....	7
--	---

Appendix figure 3. Seasonally adjusted industrial output Finland, Germany, Sweden, France and United Kingdom (BCD) 2005 - 2017, 2010=100, TOL 2008.....	8
---	---

Revisions in these statistics.....	9
------------------------------------	---

Industrial output was in January on level with the previous year

According to Statistics Finland, output of total industries adjusted for working days was in January 2017 on level with January 2016. Seasonally adjusted output fell in January by 0.9 per cent compared with December.

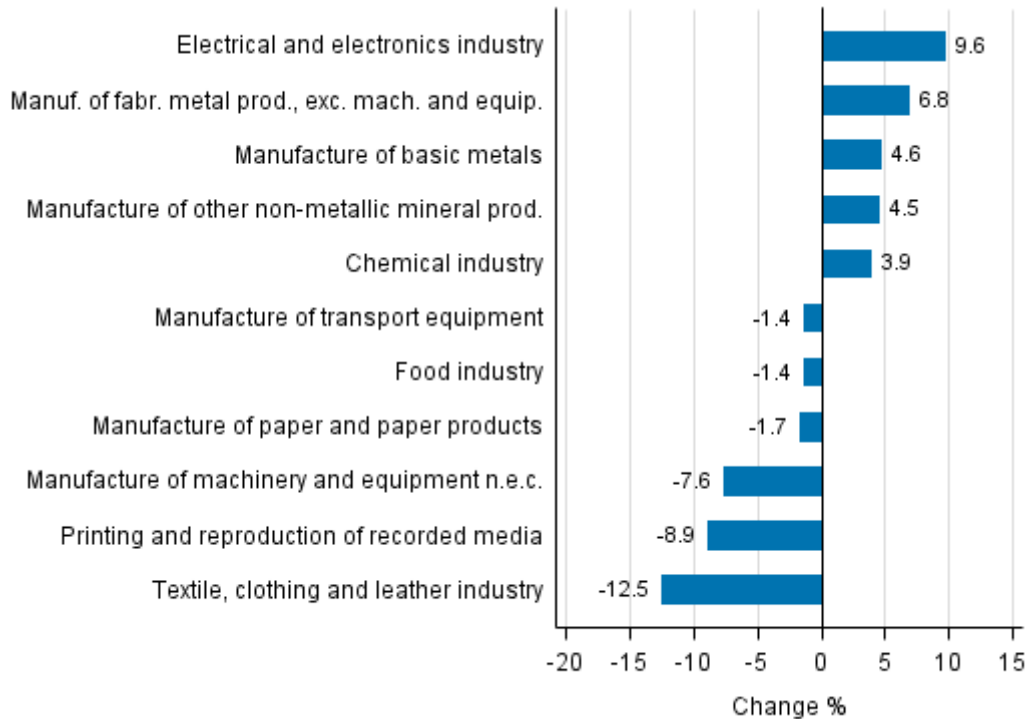
Adjusted for working days, industrial output (C) grew by 0.9 per cent in January from one year back. Seasonally adjusted output fell in January by 0.6 per cent from December.

Table 1. Volume index of industrial output, value added, original, working day adjusted, seasonally adjusted change percentage

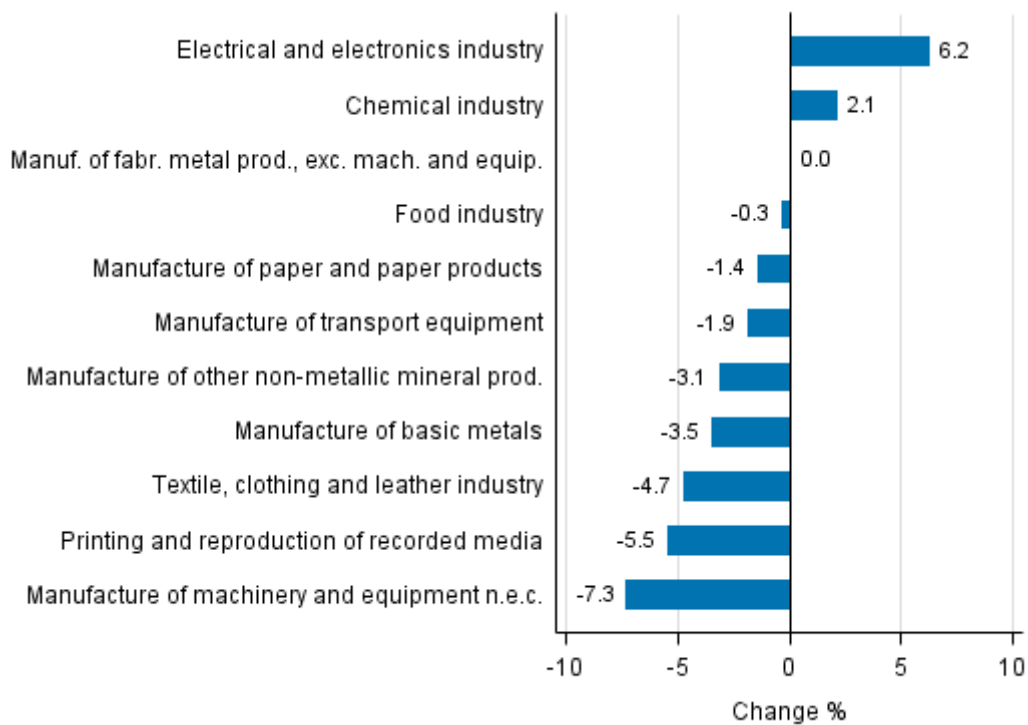
	Value added share	Original change percentage, 2017 JAN / 2016 JAN	Working day adj. change percentage, 2017 JAN / 2016 JAN	Seasonal adj. change percentage, 2017 JAN / 2016 DEC
Industry (Tol 2008)				
Total industries	100,0	4,2	0,0	-0,9
B Mining and quarrying	1,5	27,9	27,9	0,7
C Manufacturing	84,3	5,8	0,9	-0,6
10 Manufacture of food products	6,9	4,4	-2,0	-0,1
11 Manufacture of beverages	1,1	9,4	2,4	-3,6
13 Manufacture of textiles	0,6	14,2	6,1	-2,2
14 Manufacture of wearing apparel	0,4	-13,3	-16,2	2,0
15 Manufacture of leather and related products	0,2	12,4	12,4	0,3
16 Manufacture of wood and of products of wood and cork, except furniture; manufacture of articles of straw and plaiting materials	3,6	15,8	7,2	-2,4
17 Manufacture of paper and paper products	9,8	-1,7	-1,7	-1,4
18 Printing and reproduction of recorded media	1,5	-3,9	-8,9	-5,5
23 Manufacture of other non-metallic mineral products	2,9	11,8	4,5	-3,1
24 Manufacture of basic metals	4,2	5,4	4,6	-3,5
25 Manufacture of fabricated metal products, except machinery and equipment	7,7	13,0	6,8	-0,0
28 Manufacture of machinery and equipment n.e.c.	10,9	-4,0	-7,6	-7,3
31 Manufacture of furniture	1,0	10,8	2,6	-5,5
32 Other manufacturing	0,7	15,6	15,6	2,9
33 Repair and installation of machinery and equipment	3,9	11,1	6,5	-2,6
D Electricity, gas, steam and air conditioning supply	10,7	-7,8	-7,8	-1,9
E Water supply; sewerage, waste management and remediation activities	3,5	11,9	11,9	3,9
36 Water collection, treatment and supply	1,1	-0,4	-0,4	-1,8
Main industrial groupings:				
Raw materials and productive goods	40,7	7,6	4,2	-2,2
Investment goods	28,1	6,6	0,8	0,6
Durable goods	1,3	15,4	5,6	-3,5
Other consumer goods	13,9	-1,3	-8,0	-0,7
Special indices:				
10-11 Food industry	7,9	5,1	-1,4	-0,3
13-15 Textile, clothing and leather industry	1,2	4,9	-12,5	-4,7
16-17 Forest industry	13,5	2,0	-0,6	-2,1
19-22 Chemical industry	13,7	3,9	3,9	2,1
24-30 Metal industry	38,1	7,5	1,9	0,5
26-27 Electrical and electronics industry	12,6	16,9	9,6	6,2
25,28-30,33 Machinery and metal product industry	25,2	3,4	-1,4	-3,1
29-30 Manufacture of transport equipment	2,7	-1,4	-1,4	-1,9

Appendix figures

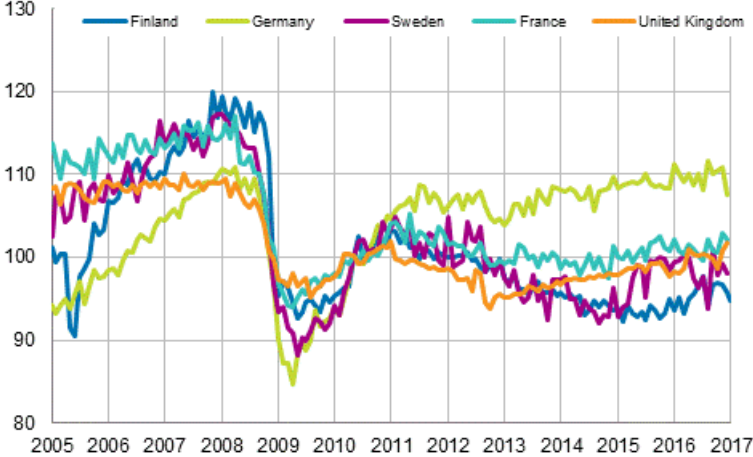
Appendix figure 1. Working day adjusted change percentage of industrial output January 2016 /January 2017, TOL 2008



Appendix figure 2. Seasonally adjusted change percentage of industrial output December 2016 /January 2017, TOL 2008



Appendix figure 3. Seasonally adjusted industrial output Finland, Germany, Sweden, France and United Kingdom (BCD) 2005 - 2017, 2010=100, TOL 2008



Revisions in these statistics

The data of the original series of industrial output have become revised according to the table below. For more information about data revisions, see Section 3 of the quality description (only in Finnish).

Revisions to data on annual changes in main industries

Main industries and Statistical reference month		Annual change (%)		Revision (%-point)
		1st release (%)	Latest release (10.03.2017) (%)	
BCDE Total industry	2016 / 08	1,9	3,6	1,7
	2016 / 09	3,3	4,4	1,1
	2016 / 10	0,4	2,3	1,9
	2016 / 11	7,1	7,5	0,4
	2016 / 12	-0,8	-1,2	-0,4
C Manufacturing	2016 / 08	3,5	6,5	3,0
	2016 / 09	4,9	6,6	1,7
	2016 / 10	0,8	2,5	1,7
	2016 / 11	6,8	6,9	0,1
	2016 / 12	-0,8	-1,4	-0,6
D Electricity, gas, steam and air conditioning supply	2016 / 08	0,9	0,9	0,0
	2016 / 09	-5,2	-5,2	0,0
	2016 / 10	-4,3	-4,3	0,0
	2016 / 11	9,7	9,7	0,0
	2016 / 12	-0,5	-0,5	0,0
10-11 Food industry	2016 / 08	3,7	5,6	1,9
	2016 / 09	-0,4	1,0	1,4
	2016 / 10	-3,0	-2,3	0,7
	2016 / 11	4,1	4,7	0,6
	2016 / 12	-1,6	-2,3	-0,7
16-17 Forest industry	2016 / 08	0,4	2,5	2,1
	2016 / 09	1,2	1,3	0,1
	2016 / 10	2,4	2,4	0,0
	2016 / 11	3,7	3,6	-0,1
	2016 / 12	1,5	0,3	-1,2
19-22 Chemical industry	2016 / 08	-0,8	0,1	0,9
	2016 / 09	8,8	8,4	-0,4
	2016 / 10	9,5	6,6	-2,9
	2016 / 11	14,6	12,9	-1,7
	2016 / 12	-5,3	-3,3	2,0
24-30, 33 Metal industry	2016 / 08	5,7	9,3	3,6
	2016 / 09	6,0	8,5	2,5
	2016 / 10	-1,5	1,7	3,2
	2016 / 11	6,0	6,1	0,1
	2016 / 12	-1,0	-2,3	-1,3
26-27 Electrical and electronics industry	2016 / 08	15,5	15,5	0,0
	2016 / 09	3,9	2,7	-1,2
	2016 / 10	4,6	0,4	-4,2
	2016 / 11	17,2	10,8	-6,4
	2016 / 12	-8,5	-12,3	-3,8

Main industries and Statistical reference month		Annual change (%)		Revision (%-point)
		1st release (%)	Latest release (10.03.2017) (%)	
Manufacturing excl. electrical and electronics industry	2016 / 08	1,9	5,2	3,3
	2016 / 09	5,0	7,3	2,3
	2016 / 10	0,3	2,9	2,6
	2016 / 11	5,3	6,2	0,9
	2016 / 12	0,6	1,0	0,4

Inquiries

Kari Rautio 029 551 2479

Heidi Myllylä 029 551 3792

Director in charge:

Mari Ylä-Jarkko

volyymi.indeksi@stat.fi

www.stat.fi

Source: Volume Index of Industrial Output 2017, January. Statistics Finland