

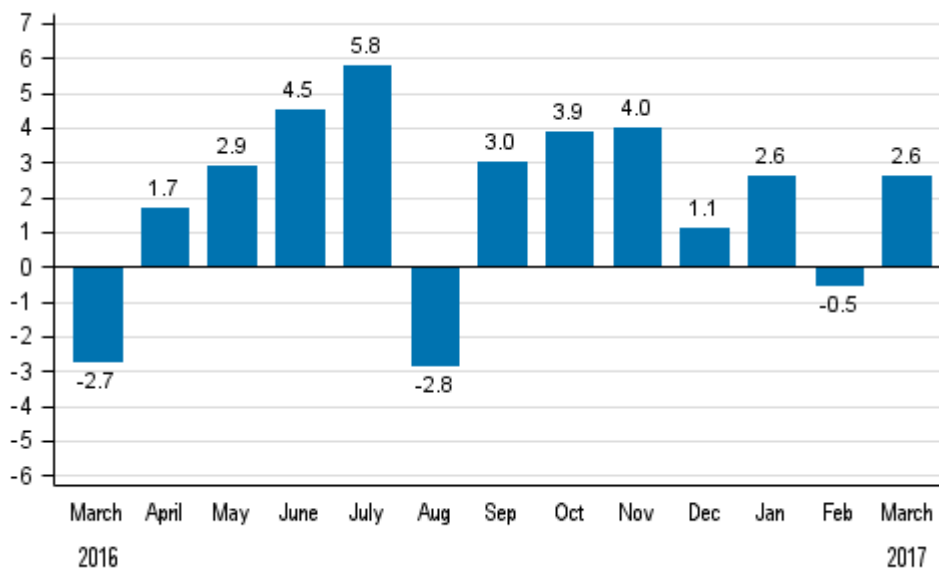
# Volume index of industrial output

2017, March

## Industrial output grew by 2,6 per cent year-on year in March

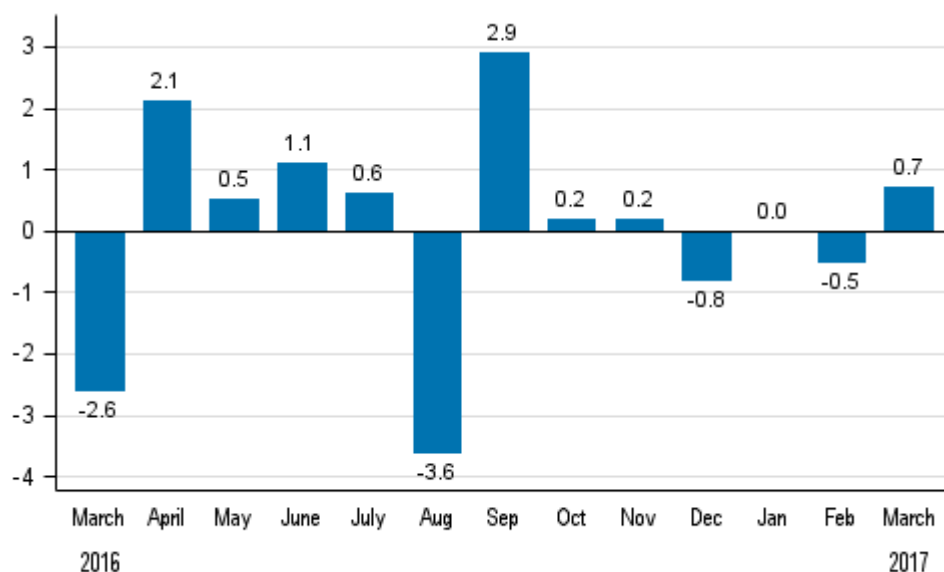
According to Statistics Finland, output of total industries adjusted for working days was 2.6 per cent higher in March 2017 than in March 2016. This year's March had two working days more than last year. Original output grew by 6.5 per cent in March from one year back. Adjusted for working days, industrial output went up by 1.6 per cent in January to March from one year back.

### Working day adjusted change in total industrial output (BCDE) from corresponding month previous year, %, TOL 2008



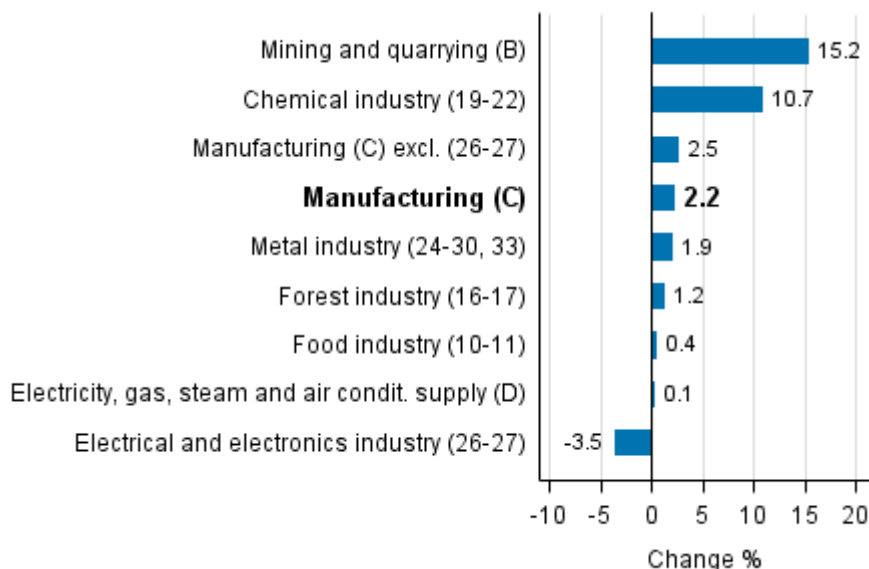
Seasonally adjusted output went up by 0.7 per cent in March from the month before. In February, output declined by 0.5 per cent from the month before and in January, output was on level with December.

**Seasonally adjusted change in total industrial output (BCDE) from previous month, %, TOL 2008**



In March, output grew in several main industries. Output increased most, by 15.2 per cent, in mining and quarrying. In the chemical industry, output grew by 10.7 per cent. In the metal industry, output increased by 1.9 per cent from one year back. Output in the forest industry increased by 1.2 per cent from the previous year. In the electrical industry output declined by 3.5 per cent.

**Working day adjusted change in industrial output by industry 3/2016-3/2017, %, TOL 2008**



In March, capacity utilisation rate in manufacturing (C) was 84.4 per cent, or 2.6 per cent higher than one year earlier. In the forest industry, capacity utilisation rate was 92.5 per cent in March, or 2.4 percentage points higher than in March 2016. In the metal industry, capacity utilisation rate was 85.1 per cent in March, which was 3.2 per cent higher than one year earlier.

Revised data for March 2017 will be published at 9 am on 9 June 2017 in connection with the release of industrial output data for April 2017. The revision is influenced by the estimation used in the latest release, which concerns the periodic tax return data used for enterprises with fewer than 50 employees. Because of the method used, seasonally adjusted figures for previous months may change even if the original figures do not become revised. The seasonally adjusted figures will also be adjusted for working days.

# Contents

Industrial output grew by 2.6 per cent year-on year in March .....	5
--------------------------------------------------------------------	---

## Tables

Table 1. Volume index of industrial output, value added, original, working day adjusted, seasonally adjusted change percentage.....	6
-------------------------------------------------------------------------------------------------------------------------------------	---

## Figures

### Appendix figures

Appendix figure 1. Working day adjusted change percentage of industrial output March 2016 /March 2017, TOL 2008.....	7
----------------------------------------------------------------------------------------------------------------------	---

Appendix figure 2. Seasonally adjusted change percentage of industrial output February 2017 /March 2017, TOL 2008.....	7
------------------------------------------------------------------------------------------------------------------------	---

Appendix figure 3. Seasonally adjusted industrial output Finland, Germany, Sweden, France and United Kingdom (BCD) 2005 - 2017, 2010=100, TOL 2008.....	8
---------------------------------------------------------------------------------------------------------------------------------------------------------	---

Revisions in these statistics.....	9
------------------------------------	---

## Industrial output grew by 2.6 per cent year-on year in March

According to Statistics Finland, output of total industries adjusted for working days was 2.6 per cent higher in March 2017 than twelve months earlier. Seasonally adjusted output grew by 0.7 per cent in March from February.

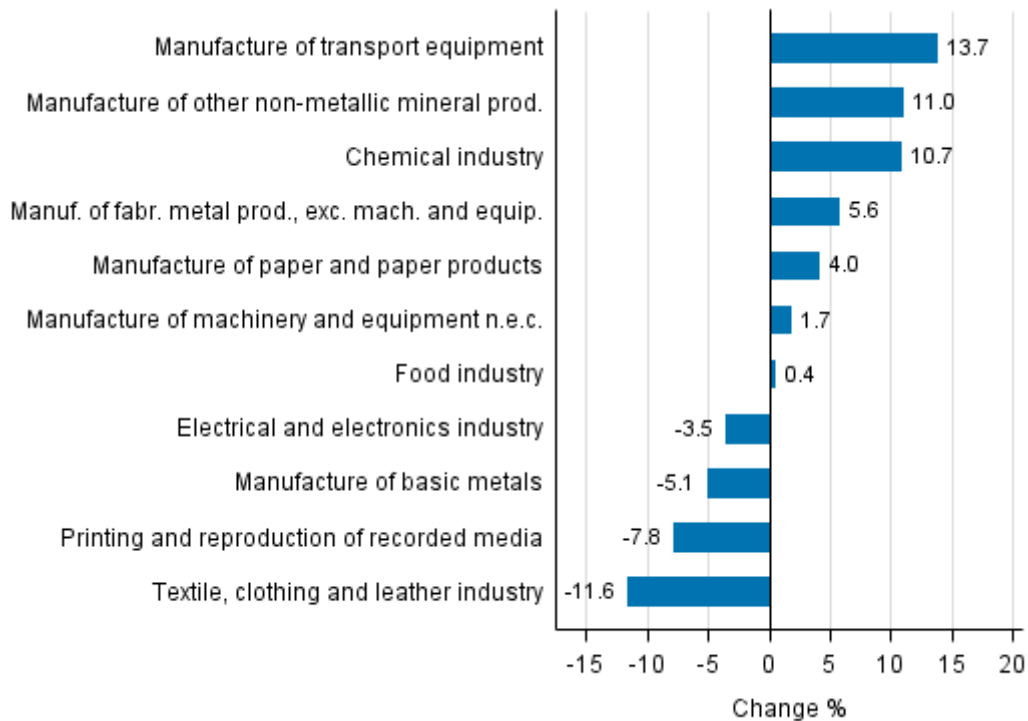
Adjusted for working days, industrial output (C) went up by 2.2 per cent in March from one year back. Seasonally adjusted output grew by 0.4 per cent in March from February.

**Table 1. Volume index of industrial output, value added, original, working day adjusted, seasonally adjusted change percentage**

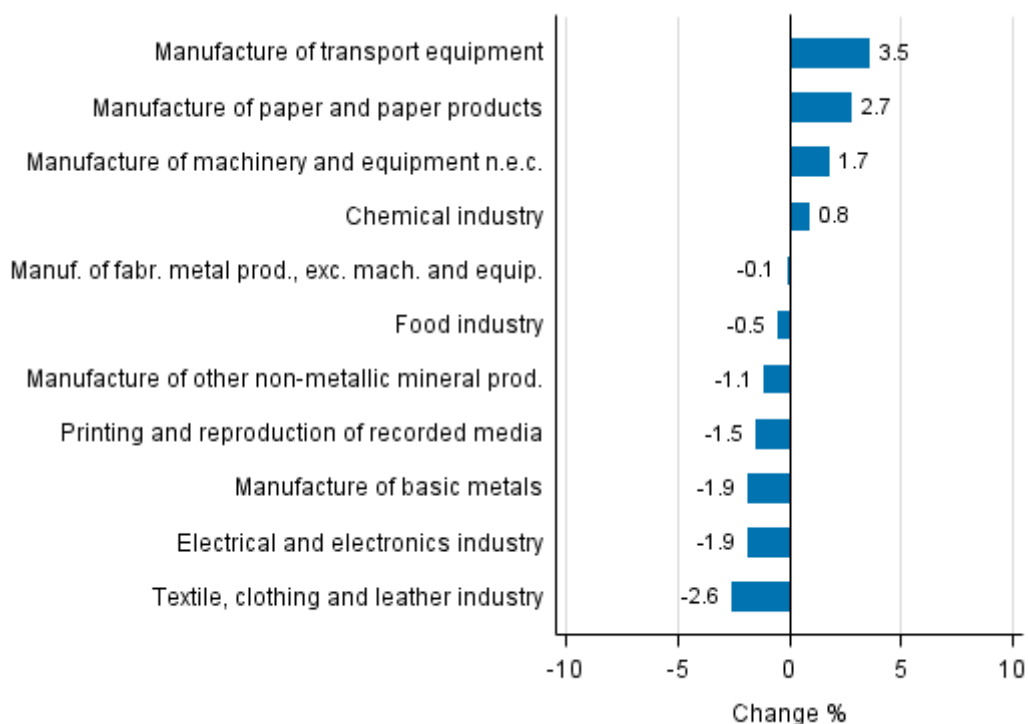
	Value added share	Original change percentage, 2017 MAR / 2016 MAR	Working day adj. change percentage, 2017 MAR / 2016 MAR	Seasonal adj. change percentage, 2017 MAR / 2017 FEB
Industry (Tol 2008)				
Total industries	100,0	6,5	2,6	0,7
B Mining and quarrying	1,5	15,2	15,2	4,7
C Manufacturing	84,3	7,2	2,2	0,4
10 Manufacture of food products	6,9	5,8	1,1	-1,1
11 Manufacture of beverages	1,1	-2,8	-4,9	-3,4
13 Manufacture of textiles	0,6	3,3	-5,3	-1,7
14 Manufacture of wearing apparel	0,4	-32,4	-36,9	-2,8
15 Manufacture of leather and related products	0,2	33,4	33,4	8,0
16 Manufacture of wood and of products of wood and cork, except furniture; manufacture of articles of straw and plaiting materials	3,6	2,4	-5,8	-3,0
17 Manufacture of paper and paper products	9,8	4,0	4,0	2,7
18 Printing and reproduction of recorded media	1,5	-2,9	-7,8	-1,5
23 Manufacture of other non-metallic mineral products	2,9	21,4	11,0	-1,1
24 Manufacture of basic metals	4,2	-1,8	-5,1	-1,9
25 Manufacture of fabricated metal products, except machinery and equipment	7,7	13,6	5,6	-0,1
28 Manufacture of machinery and equipment n.e.c.	10,9	9,9	1,7	1,7
31 Manufacture of furniture	1,0	1,7	-6,1	-1,9
32 Other manufacturing	0,7	15,7	15,7	1,1
33 Repair and installation of machinery and equipment	3,9	6,2	1,7	2,5
D Electricity, gas, steam and air conditioning supply	10,7	0,1	0,1	1,9
E Water supply; sewerage, waste management and remediation activities	3,5	8,6	4,0	5,3
36 Water collection, treatment and supply	1,1	-1,3	-1,3	1,0
Main industrial groupings:				
Raw materials and productive goods	40,7	7,1	3,2	0,7
Investment goods	28,1	7,3	1,3	0,6
Durable goods	1,3	6,2	-0,7	-0,2
Other consumer goods	13,9	8,5	2,9	-1,0
Special indices:				
10-11 Food industry	7,9	4,6	0,4	-0,5
13-15 Textile, clothing and leather industry	1,2	-3,2	-11,6	-2,6
16-17 Forest industry	13,5	3,6	1,2	1,0
19-22 Chemical industry	13,7	10,7	10,7	0,8
24-30 Metal industry	38,1	7,6	2,1	1,1
26-27 Electrical and electronics industry	12,6	2,9	-3,5	-1,9
25,28-30,33 Machinery and metal product industry	25,2	11,8	3,6	1,6
29-30 Manufacture of transport equipment	2,7	22,9	13,7	3,5

# Appendix figures

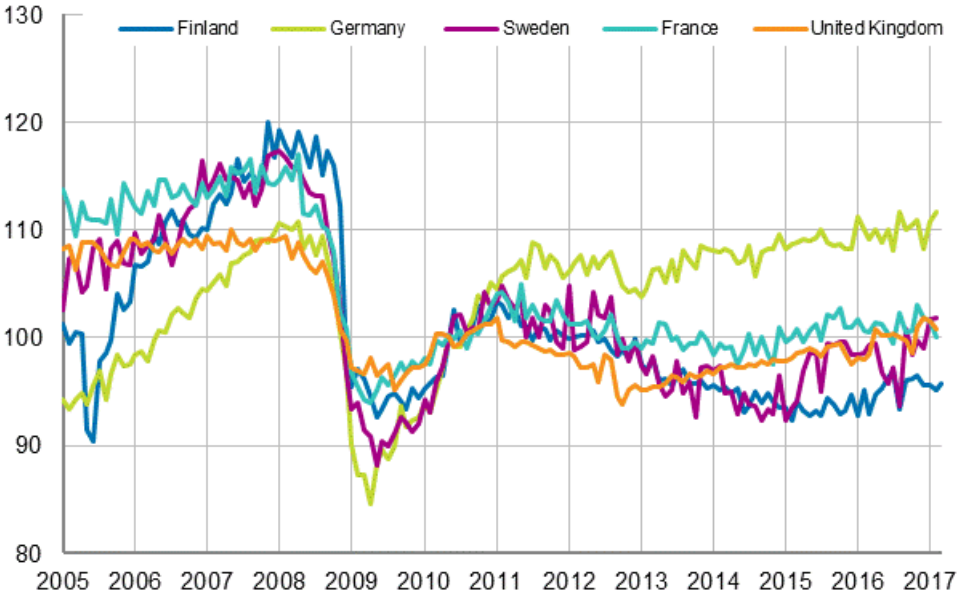
**Appendix figure 1. Working day adjusted change percentage of industrial output March 2016 /March 2017, TOL 2008**



**Appendix figure 2. Seasonally adjusted change percentage of industrial output February 2017 /March 2017, TOL 2008**



**Appendix figure 3. Seasonally adjusted industrial output Finland, Germany, Sweden, France and United Kingdom (BCD) 2005 - 2017, 2010=100, TOL 2008**





## Revisions in these statistics

The data of the original series of industrial output have become revised according to the table below. For more information about data revisions, see Section 3 of the quality description (only in Finnish).

### Revisions to data on annual changes in main industries

Main industries and Statistical reference month		Annual change (%)		Revision (%-point)
		1st release (%)	Latest release (10.05.2017) (%)	
BCDE Total industry	2016 / 10	0,4	0,8	0,4
	2016 / 11	7,1	7,4	0,3
	2016 / 12	-0,8	-0,9	-0,1
	2017 / 01	4,2	7,0	2,8
	2017 / 02	-0,2	-0,6	-0,4
C Manufacturing	2016 / 10	0,8	0,8	0,0
	2016 / 11	6,8	6,8	0,0
	2016 / 12	-0,8	-1,2	-0,4
	2017 / 01	5,8	9,0	3,2
	2017 / 02	0,5	-0,1	-0,6
D Electricity, gas, steam and air conditioning supply	2016 / 10	-4,3	-4,3	0,0
	2016 / 11	9,7	9,7	0,0
	2016 / 12	-0,5	-0,5	0,0
	2017 / 01	-7,8	-7,8	0,0
	2017 / 02	-4,3	-4,3	0,0
10-11 Food industry	2016 / 10	-3,0	-3,6	-0,6
	2016 / 11	4,1	4,6	0,5
	2016 / 12	-1,6	-2,3	-0,7
	2017 / 01	5,1	5,6	0,5
	2017 / 02	-1,3	-1,0	0,3
16-17 Forest industry	2016 / 10	2,4	1,9	-0,5
	2016 / 11	3,7	3,6	-0,1
	2016 / 12	1,5	0,3	-1,2
	2017 / 01	2,0	3,8	1,8
	2017 / 02	-4,6	-2,9	1,7
19-22 Chemical industry	2016 / 10	9,5	5,5	-4,0
	2016 / 11	14,6	12,9	-1,7
	2016 / 12	-5,3	-3,5	1,8
	2017 / 01	3,9	5,3	1,4
	2017 / 02	7,0	6,6	-0,4
24-30, 33 Metal industry	2016 / 10	-1,5	-0,4	1,1
	2016 / 11	6,0	5,9	-0,1
	2016 / 12	-1,0	-1,7	-0,7
	2017 / 01	7,8	12,5	4,7
	2017 / 02	-0,4	-1,3	-0,9
26-27 Electrical and electronics industry	2016 / 10	4,6	1,2	-3,4
	2016 / 11	17,2	10,8	-6,4
	2016 / 12	-8,5	-10,5	-2,0
	2017 / 01	16,9	20,4	3,5
	2017 / 02	0,1	2,2	2,1

Main industries and Statistical reference month		Annual change (%)		Revision (%-point)
		1st release (%)	Latest release (10.05.2017) (%)	
Manufacturing excl. electrical and electronics industry	2016 / 10	0,3	0,7	0,4
	2016 / 11	5,3	6,1	0,8
	2016 / 12	0,6	0,9	0,3
	2017 / 01	3,9	7,2	3,3
	2017 / 02	0,5	-0,4	-0,9

## Inquiries

Kari Rautio 029 551 2479

Maarit Mäkelä 029 551 3324

Director in charge:

Mari Ylä-Jarkko

[volyyimi.indeksi@stat.fi](mailto:volyyimi.indeksi@stat.fi)

[www.stat.fi](http://www.stat.fi)

Source: Volume Index of Industrial Output 2017, March. Statistics Finland