

Volume index of industrial output

2020, December

Industrial output fell in December both from the previous month and from one year back

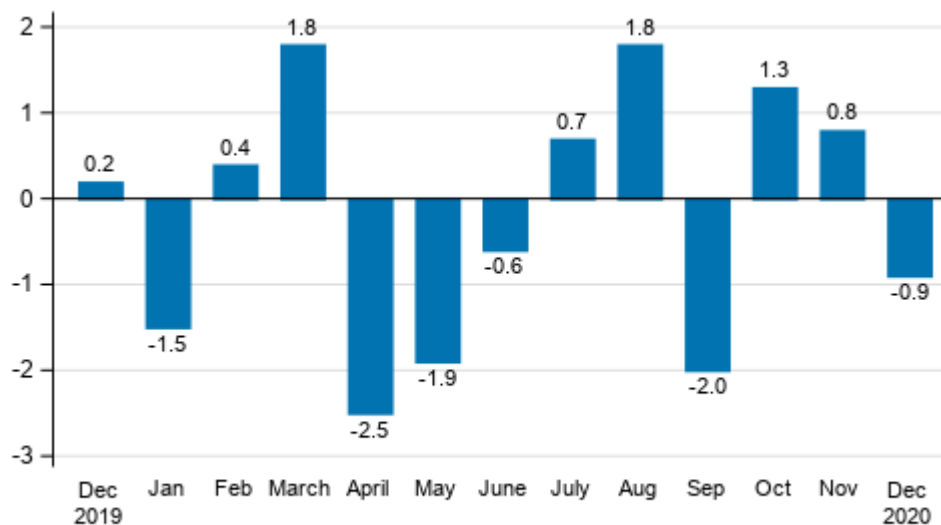
Seasonally adjusted industrial output (TOL BCD) fell by 0.9 per cent in December from the month before. According to Statistics Finland, industrial output adjusted for working days was 2.5 per cent lower in December 2020 compared to December 2019. Adjusted for working days, industrial output went down by 3.1 per cent in January to December from one year back.

Trend and seasonally adjusted series of industrial output (BCD), 2007/01 to 2020/12



Source: Statistics Finland

Seasonally adjusted change in industrial output (BCD) from previous month, %, TOL 2008

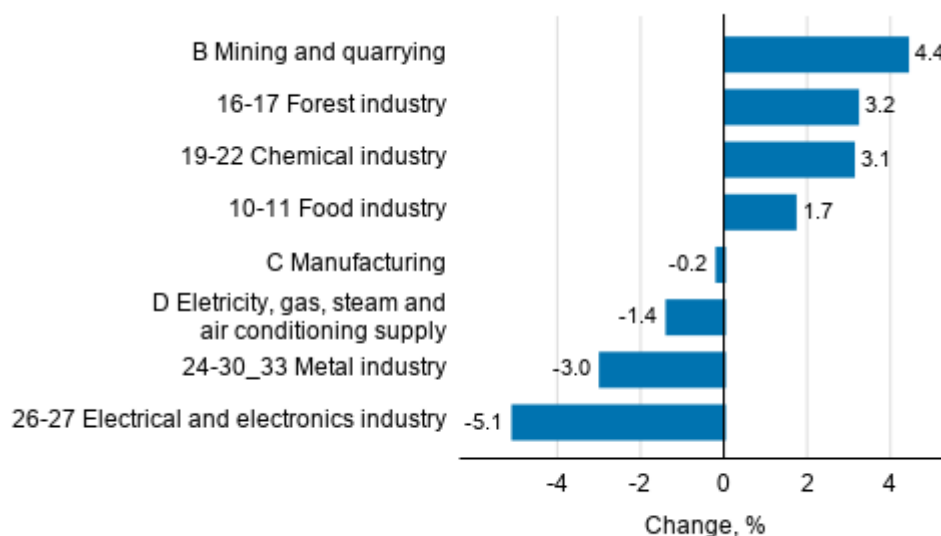


Source: Statistics Finland

Examined by main industry, seasonally adjusted industrial output grew in December in several industries. Growth was biggest in the industry of mining and quarrying, by 4.4 per cent from the previous month. In the forest industry, output grew by 3.2 per cent and in the chemical industry by 3.1 per cent compared to November. Output decreased in December most in the electrical and electronics industry, by 5.1 per cent, and in the metal industry, by 3.0 per cent.

Compared to one year ago, output grew in two main industries. The chemical industry grew by 13.9 per cent and mining and quarrying by 8.5 per cent from the year before. Output fell most in the metal industry, by 6.3 per cent, and in the electrical and electronics industry, by 3.4 per cent compared to December 2019.

Seasonal adjusted change in industrial output by industry, 11/2020 to 12/2020, %, TOL 2008



Source: Statistics Finland

Revised data for December 2020 will be published at 8 am on 10 March 2021 in connection with the release of industrial output data for January 2021. The revision is influenced by the estimation used in the latest release, which is based on the Tax Administration's data on self-assessed taxes used for enterprises with fewer than 50 employees. Because of the method used, seasonally adjusted figures for previous months may change even if the original figures do not become revised. The seasonally adjusted figures are also adjusted for working days.

Contents

Industrial output decreased by 2.5 per cent year-on-year in December.....	5
---	---

Tables

Table 1. Volume index of industrial output, value added, original, working day adjusted, seasonally adjusted change percentage.....	6
---	---

Figures

Appendix figures

Appendix figure 1. Three months' year-on-year change in manufacturing (C) sub-industries adjusted for working days (TOL 2008).....	7
Appendix figure 2. Trend series of manufacturing sub-industries, 2007/01 to 2020/12 TOL 2008.....	7
Appendix figure 3. Seasonally adjusted industrial output Finland, Germany, Sweden, France and United Kingdom (BCD) 2007 to 2020, TOL 2008.....	8

Revisions in these statistics.....	9
------------------------------------	---

Industrial output decreased by 2.5 per cent year-on-year in December

According to Statistics Finland, output of total industries (BCD) adjusted for working days was 2.5 per cent lower in December 2020 than in December 2019. In December, seasonally adjusted output went down by 0.9 per cent from the previous month.

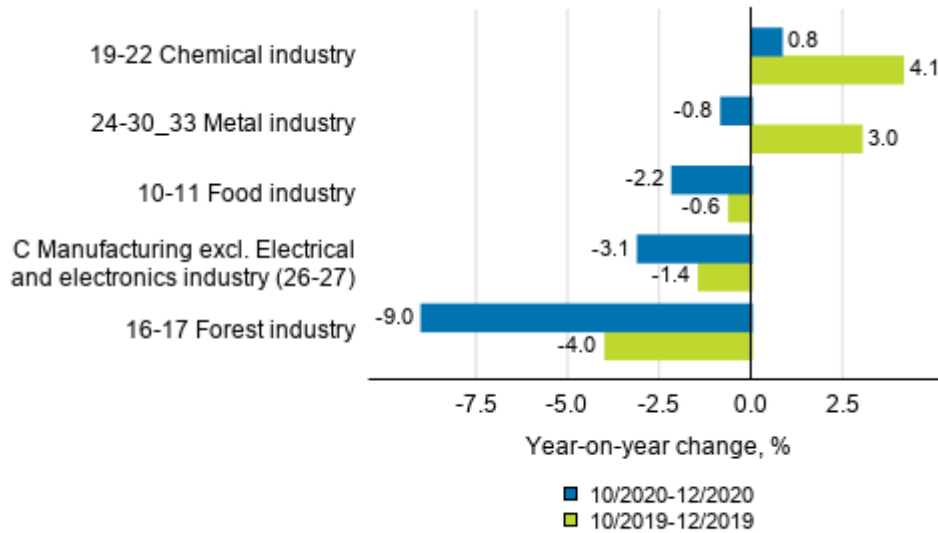
Adjusted for working days, industrial output (C) declined by 2.9 per cent from one year earlier. In December, seasonally adjusted output decreased by 0.2 per cent from the month before.

Table 1. Volume index of industrial output, value added, original, working day adjusted, seasonally adjusted change percentage

Industry (Tol 2008)	Value added share	Original change percentage, 2020 DEC / 2019 DEC	Working day adj. change percentage, 2020 DEC / 2019 DEC	Seasonal adj. change percentage, 2020 DEC / 2020 NOV
B Mining and quarrying	2,5	8,5	8,5	4,4
BCD Total industries	100,0	-0,3	-2,5	-0,9
C Manufacturing	86,3	-0,6	-2,9	-0,2
10 Manufacture of food products	6,3	3,2	-0,5	1,3
10-11 Food industry	7,5	2,9	-0,7	1,7
11 Manufacture of beverages	1,1	1,8	-1,7	5,1
13 Manufacture of textiles	0,5	30,6	26,4	-11,5
13-15 Textile, clothing and leather industry	1,1	18,8	12,6	-3,6
14 Manufacture of wearing apparel	0,3	4,9	1,0	3,3
15 Manufacture of leather and related products	0,2	16,0	7,7	11,9
16 Manufacture of wood and of products of wood and cork, except furniture: Manufacture of articles of straw and plaiting materials	3,8	35,0	30,2	1,4
16-17 Forest industry	14,5	-0,1	-1,2	3,2
17 Manufacture of paper and paper products	10,6	-9,8	-9,8	2,0
18 Printing and reproduction of recorded media	1,1	9,5	7,0	1,1
19-22 Chemical industry	15,9	13,9	13,9	3,1
23 Manufacture of other non-metallic mineral products	3,1	8,3	4,5	2,7
24 Manufacture of basic metals	5,2	35,3	33,5	7,9
24-30_33 Metal industry	41,4	-3,8	-6,3	-3,0
25 Manufacture of fabricated metal products, except machinery and equipment	8,4	10,1	7,0	5,5
26-27 Electrical and electronics industry	9,6	-0,7	-3,4	-5,1
28 Manufacture of machinery and equipment n.e. .	11,0	-18,0	-20,3	-6,4
29-30 Manufacture of transport equipment	3,0	-17,0	-20,7	-9,3
31 Manufacture of furniture	1,1	-0,9	-5,2	2,3
32 Other manufacturing	0,7	20,8	15,8	4,7
33 Repair and installation of machinery and equipment	4,5	10,5	8,4	-2,3
C Manufacturing excl. Electrical and electronics industry (26-27)	76,7	1,9	-0,4	0,9
D Electricity, gas, steam and air conditioning supply	11,3	-0,6	-0,6	-1,4
Investment goods	27,0	-9,4	-11,5	-5,4
Durable goods	1,3	1,6	-2,8	-0,1
Raw materials and productive goods	44,2	10,0	8,0	3,8
Other consumer goods	13,3	9,2	5,5	3,6

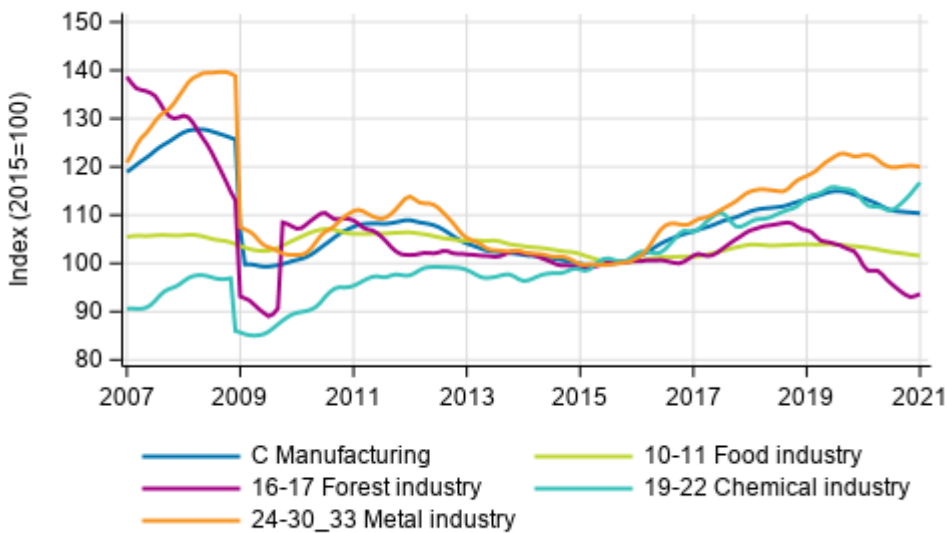
Appendix figures

Appendix figure 1. Three months' year-on-year change in manufacturing (C) sub-industries adjusted for working days (TOL 2008)



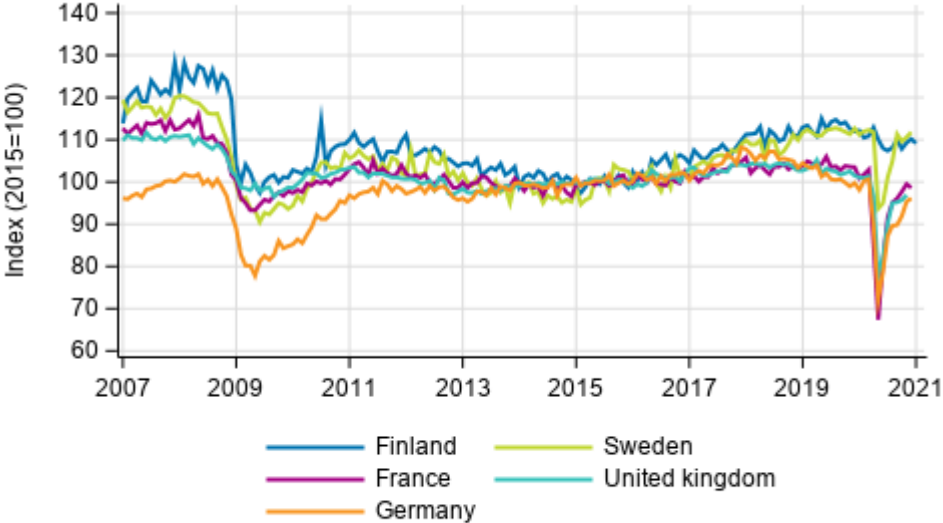
Source: Statistics Finland

Appendix figure 2. Trend series of manufacturing sub-industries, 2007/01 to 2020/12 TOL 2008



Source: Statistics Finland

Appendix figure 3. Seasonally adjusted industrial output Finland, Germany, Sweden, France and United Kingdom (BCD) 2007 to 2020, TOL 2008



Source: Statistics Finland

Revisions in these statistics

Revisions to data on annual changes in main industries

Main industries and Statistical reference month		Annual change (%)		Revision (%-point)
		1st release	Latest release (10.2.2021)	
B Mining and quarrying	01/2020	-12,9	-11,6	1,3
	02/2020	15,4	16,9	1,5
	03/2020	-4,1	-3,9	0,2
	04/2020	-3,0	-2,8	0,2
	05/2020	29,1	28,9	-0,2
	06/2020	4,4	4,7	0,3
	07/2020	-22,4	-24,4	-2,0
	08/2020	-26,8	-26,5	0,3
	09/2020	-17,1	-18,9	-1,8
	10/2020	-13,0	-11,6	1,4
	11/2020	10,0	14,2	4,2
BCD Total industries	01/2020	-2,9	-2,7	0,2
	02/2020	-1,3	-1,0	0,3
	03/2020	5,4	4,9	-0,5
	04/2020	-4,0	-4,1	-0,1
	05/2020	-8,9	-9,0	-0,1
	06/2020	-3,0	-2,6	0,4
	07/2020	-6,1	-6,1	0,0
	08/2020	-4,5	-4,9	-0,4
	09/2020	-3,9	-3,8	0,1
	10/2020	-4,3	-4,9	-0,6
	11/2020	-0,9	-1,1	-0,2
C Manufacturing	01/2020	-1,9	-1,5	0,4
	02/2020	-2,0	-1,5	0,5
	03/2020	6,3	5,8	-0,5
	04/2020	-4,6	-4,7	-0,1
	05/2020	-10,3	-10,5	-0,2
	06/2020	-3,0	-2,6	0,4
	07/2020	-5,7	-5,8	-0,1
	08/2020	-4,1	-4,5	-0,4
	09/2020	-3,0	-2,8	0,2
	10/2020	-3,5	-4,3	-0,8
	11/2020	-1,4	-2,1	-0,7
D Electricity, gas, steam and air conditioning supply	01/2020	-9,1	-9,4	-0,3
	02/2020	-1,6	-2,2	-0,6
	03/2020	-0,1	-0,2	-0,1
	04/2020	0,4	0,6	0,2
	05/2020	-2,0	-2,1	-0,1
	06/2020	-3,0	-3,3	-0,3
	07/2020	-4,0	-3,1	0,9
	08/2020	0,6	-0,2	-0,8
	09/2020	-7,2	-7,2	0,0
	10/2020	-8,6	-7,7	0,9
	11/2020	0,8	3,7	2,9

Inquiries

Maarit Mäkelä 029 551 3324
Kirsi-Maaria Manninen 029 551 2681
Head of Department in
charge:
Katri Kaaja

volyyymi.indeksi@stat.fi
www.stat.fi

Source: Volume Index of Industrial Output 2020, December. Statistics Finland