

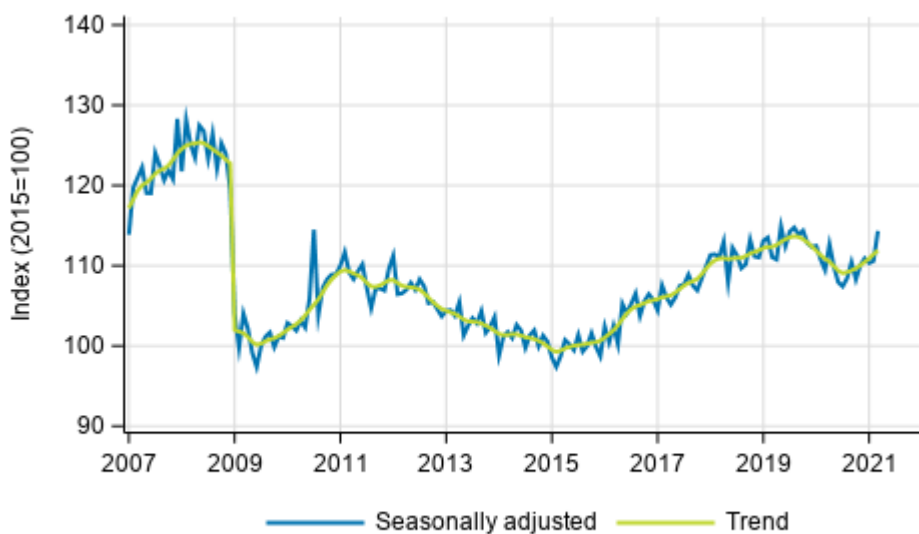
Volume index of industrial output

2021, February

Industrial output grew in February both from the previous month and from one year back

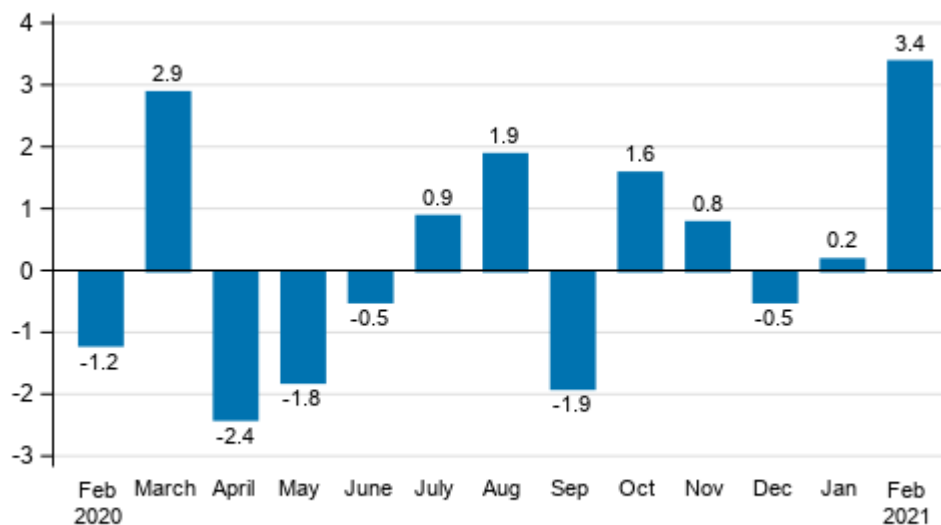
Seasonally adjusted industrial output (TOL BCD) grew by 3.4 per cent in February from the month before. According to Statistics Finland, industrial output adjusted for working days was 5.5 per cent higher in February 2021 than in February 2020.

Trend and seasonally adjusted series of industrial output (BCD), 2007/01 to 2021/02



Source: Statistics Finland

Seasonally adjusted change in industrial output (BCD) from previous month, %, TOL 2008

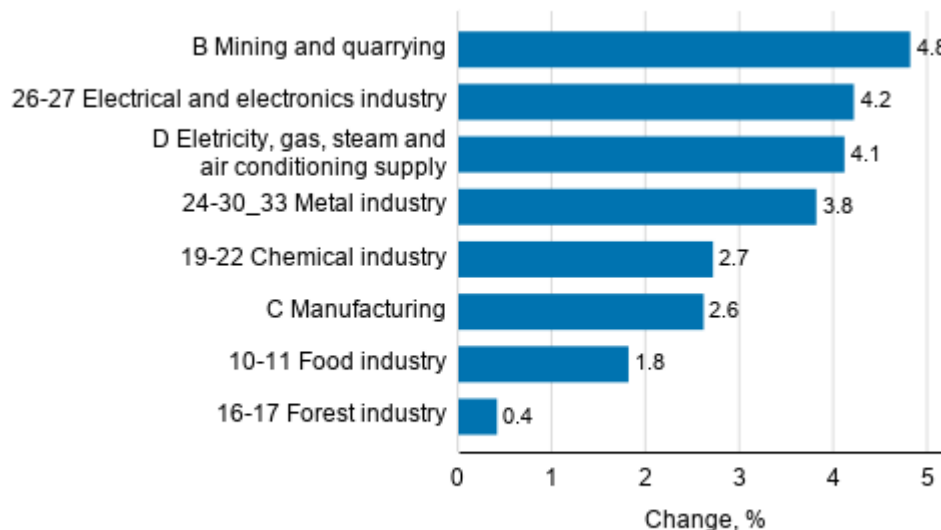


Source: Statistics Finland

Examined by main industry, seasonally adjusted industrial output grew in February in all industries. Output grew most in mining and quarrying, by 4.8 per cent, in electrical and electronics industry, by 4.2 per cent and in electricity, gas, steam and air conditioning supply, by 4.1 per cent from the month before. Output in the food industry was 1.8 per cent lower than in January. The growth was most moderate compared to the previous month in the forest industry, 0.4 per cent.

Compared to one year ago, output increased most in the forest industry, by 37.6 per cent. The growth was due to labour disputes in the industry in February 2020, which turned output in the forest industry clearly negative one year ago. Output was also higher in several other main industries than one year ago. In electricity, gas, steam and air conditioning supply, output grew in February by 8.2 per cent and in the electrical and electronics industry by 4.6 per cent. Output decreased most in the industry of mining and quarrying, by 13.2 per cent from February 2020.

Seasonal adjusted change in industrial output by industry, 01/2021 to 02/2021, %, TOL 2008



Source: Statistics Finland

Revised data for February 2021 will be published at 8 am on 10 May 2021 in connection with the release of industrial output data for March 2021. The revision is influenced by the estimation used in the latest release, which is based on the Tax Administration's data on self-assessed taxes used for enterprises with fewer than 50 employees. Because of the method used, seasonally adjusted figures for previous months may change even if the original figures do not become revised. The seasonally adjusted figures are also adjusted for working days.

Contents

Industrial output increased by 5.5 per cent year-on-year in February.....	5
---	---

Tables

Table 1. Volume index of industrial output, value added, original, working day adjusted, seasonally adjusted change percentage.....	6
---	---

Figures

Appendix figures

Appendix figure 1. Three months' year-on-year change in manufacturing (C) sub-industries adjusted for working days (TOL 2008).....	7
--	---

Appendix figure 2. Trend series of manufacturing sub-industries, 2007/01 to 2021/02 TOL 2008.....	7
---	---

Revisions in these statistics.....	8
------------------------------------	---

Industrial output increased by 5.5 per cent year-on-year in February

According to Statistics Finland output of total industries (BCD) adjusted for working days was 5.5 per cent higher in February 2021 than in February 2020. In February, seasonally adjusted output grew by 3.4 per cent from the previous month.

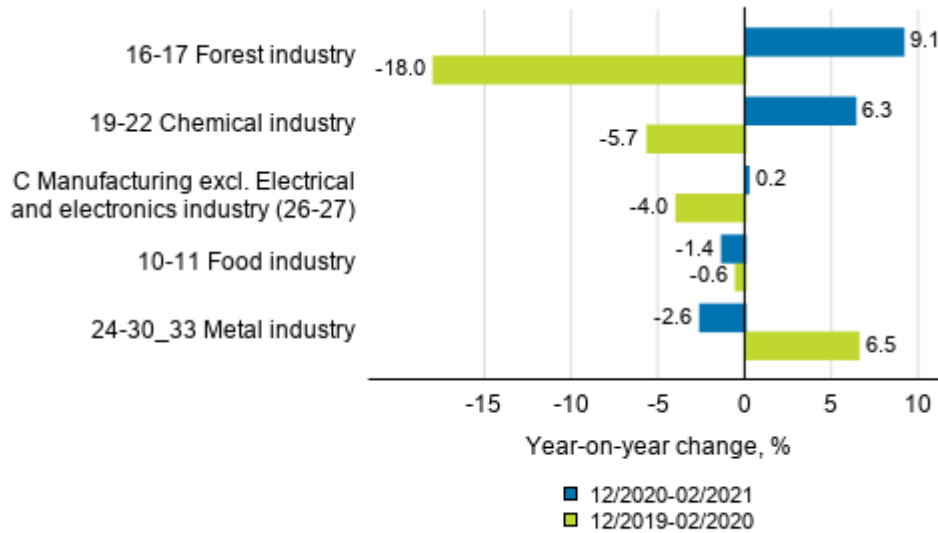
Adjusted for working days, industrial output (C) increased by 4.9 per cent from one year earlier. Seasonally adjusted output went up by 2.6 per cent in February from the month before.

Table 1. Volume index of industrial output, value added, original, working day adjusted, seasonally adjusted change percentage

Industry (Tol 2008)	Value added share	Original change percentage, 2021 FEB / 2020 FEB	Working day adj. change percentage, 2021 FEB / 2020 FEB	Seasonal adj. change percentage, 2021 FEB / 2021 JAN
B Mining and quarrying	2,0	-13,2	-13,2	4,8
BCD Total industries	100,0	6,0	5,5	3,4
C Manufacturing	85,6	5,8	4,9	2,6
10 Manufacture of food products	6,4	-0,2	0,5	1,5
10-11 Food industry	7,7	-0,9	-0,3	1,8
11 Manufacture of beverages	1,3	-2,9	-2,9	4,1
13 Manufacture of textiles	0,5	3,4	4,2	-0,6
13-15 Textile, clothing and leather industry	1,2	-0,1	-3,7	-5,2
14 Manufacture of wearing apparel	0,3	-13,8	-14,2	-2,5
15 Manufacture of leather and related products	0,4	18,9	23,7	1,6
16 Manufacture of wood and of products of wood and cork, except furniture: Manufacture of articles of straw and plaiting materials	3,3	40,7	41,7	1,3
16-17 Forest industry	11,9	39,1	37,6	0,4
17 Manufacture of paper and paper products	8,6	38,5	38,5	0,4
18 Printing and reproduction of recorded media	1,1	-12,8	-11,8	-0,5
19-22 Chemical industry	16,7	3,5	3,5	2,7
23 Manufacture of other non-metallic mineral products	3,0	-0,7	-0,1	5,1
24 Manufacture of basic metals	3,9	2,6	4,2	9,6
24-30_33 Metal industry	42,1	2,2	1,8	3,8
25 Manufacture of fabricated metal products, except machinery and equipment	9,4	-3,3	-3,1	2,6
26-27 Electrical and electronics industry	10,3	5,8	4,6	4,2
28 Manufacture of machinery and equipment n.e. .	11,2	-0,3	-2,3	4,5
29-30 Manufacture of transport equipment	2,7	10,9	16,2	20,5
31 Manufacture of furniture	1,1	-4,3	-4,4	4,5
32 Other manufacturing	0,7	23,2	18,0	1,8
33 Repair and installation of machinery and equipment	4,6	12,4	15,6	2,1
C Manufacturing excl. Electrical and electronics industry (26-27)	75,3	4,4	4,2	4,4
D Electricity, gas, steam and air conditioning supply	12,5	8,2	8,2	4,1
Investment goods	27,4	2,6	1,7	3,8
Durable goods	1,4	-0,5	-0,4	1,7
Raw materials and productive goods	41,8	12,3	12,7	6,1
Other consumer goods	13,7	-5,3	-6,0	0,5

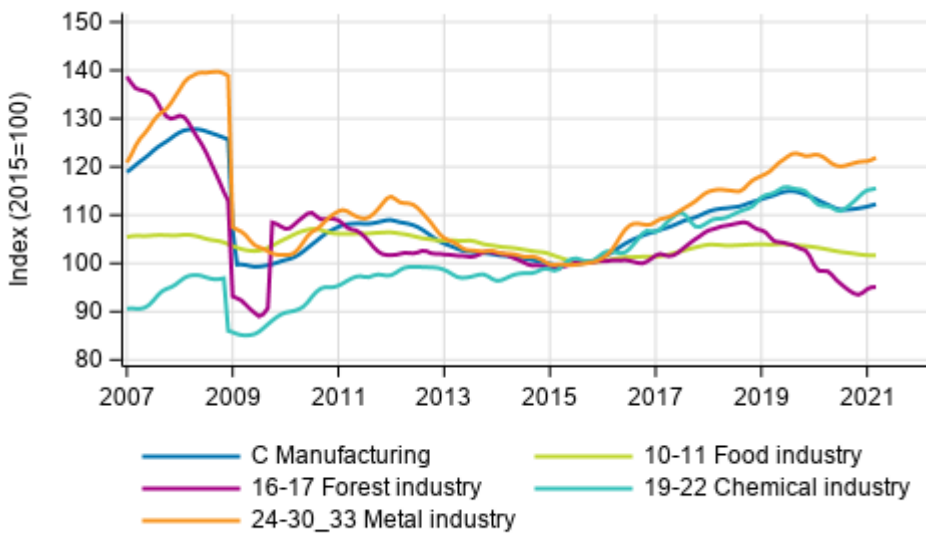
Appendix figures

Appendix figure 1. Three months' year-on-year change in manufacturing (C) sub-industries adjusted for working days (TOL 2008)



Source: Statistics Finland

Appendix figure 2. Trend series of manufacturing sub-industries, 2007/01 to 2021/02 TOL 2008



Source: Statistics Finland

Revisions in these statistics

Revisions to data on annual changes in main industries

Main industries and Statistical reference month		Annual change (%)		Revision (%-point)
		1st release	Latest release (9.4.2021)	
B Mining and quarrying	01/2021	-1,0	-10,3	-9,3
BCD Total industries	01/2021	-3,4	-4,7	-1,3
C Manufacturing	01/2021	-5,3	-6,9	-1,6
D Eletricity, gas, steam and air conditioning supply	01/2021	4,5	5,5	1,0

Inquiries

Maarit Mäkelä 029 551 3324
Kirsi-Maaria Manninen 029 551 2681
Head of Department in
charge:
Katri Kaaja

volyyymi.indeksi@stat.fi
www.stat.fi

Source: Volume Index of Industrial Output 2021, February. Statistics Finland